

ROUGH COUNTRY

CFMOTO UFORCE 1000XL -4 FULL COVERAGE SKID PLATES

Thank you for choosing Rough Country for all your vehicle needs.

Please read instructions before beginning installation. Check the kit hardware against the kit contents shown below. Be sure you have all needed parts and know where they go.

If questions exist, please call us @1-800-222-7023. We will be happy to answer any questions concerning this product. Check all fasteners for proper torque. Check to ensure adequate clearance between all components. Periodically check all hardware for tightness.

Kit Contents:

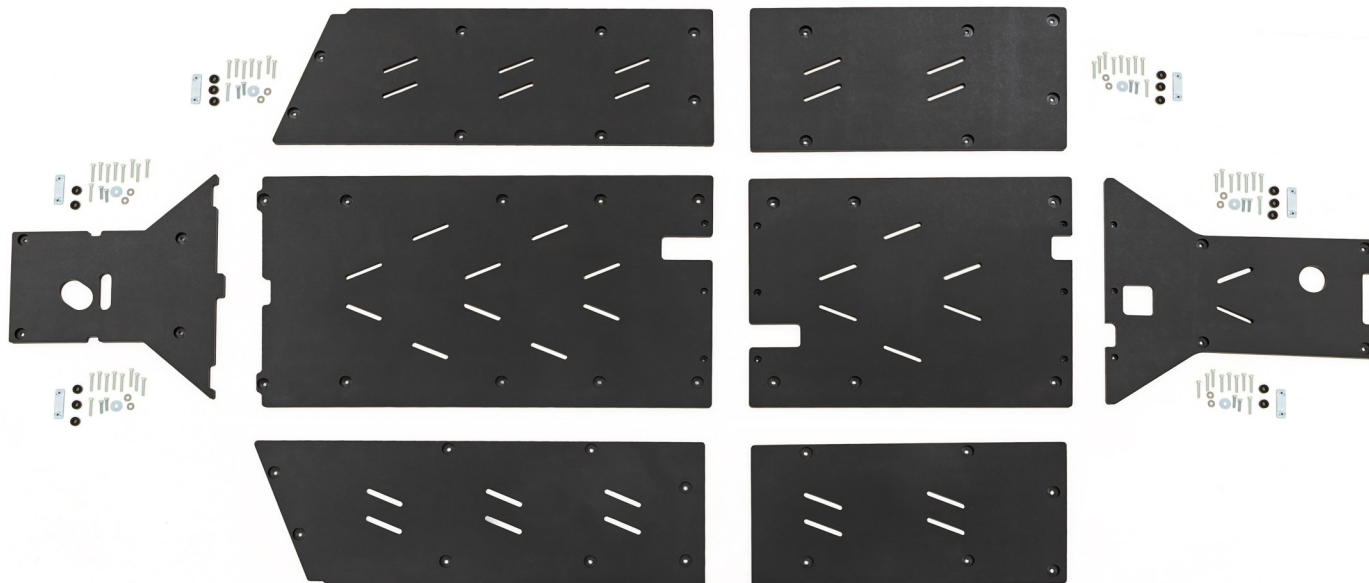
1-FR SKID PLATE
1-RR SKID PLATE
1-MID FR PLATE
1-MID RR PLATE
1-DR FR OUTER PLATE
1-DR RR OUTER PLATE
1-PASS FR OUTER PLATE
1-PASS RR OUTER PLATE
3-6MM DUAL NUT PLATE

Tools Needed:

10MM SOCKET

Hardware Included:

12-6MM-1.0 X 25MM HEX BOLT
12-6MM .250 FLAT WASHER
52-6MM-1.0 X 35MM HEX BOLT
52-.250 FENDER WASHER
16-3/8 SPACER



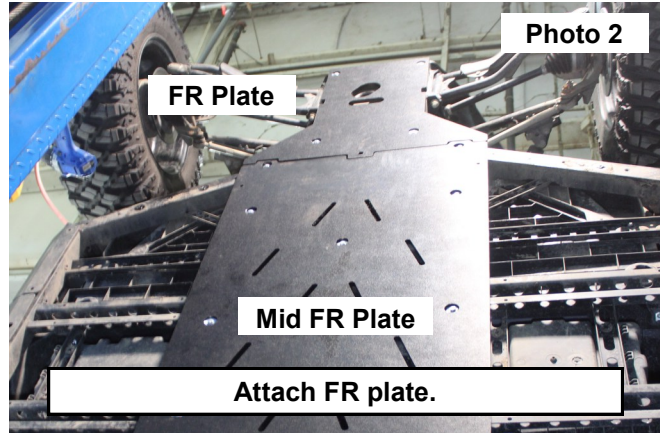
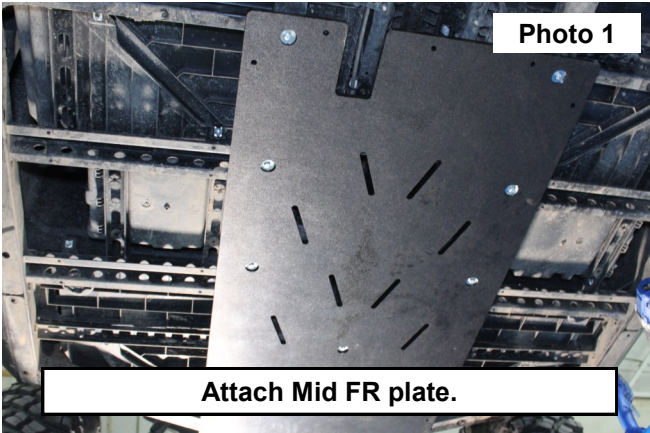
Torque Specs:

Size	Grade 5	Grade 8	Size	Class 8.8	Class 10.9
5/16"	15 ft/lbs	20ft/lbs	6MM	5ft/lbs	9ft/lbs
3/8"	30 ft/lbs	35ft/lbs	8MM	18ft/lbs	23ft/lbs
7/16"	45 ft/lbs	60ft/lbs	10MM	32ft/lbs	45ft/lbs
1/2"	65 ft/lbs	90ft/lbs	12MM	55ft/lbs	75ft/lbs
9/16"	95 ft/lbs	130ft/lbs	14MM	85ft/lbs	120ft/lbs
5/8"	135ft/lbs	175ft/lbs	16MM	130ft/lbs	165ft/lbs
3/4"	185ft/lbs	280ft/lbs	18MM	170ft/lbs	240ft/lbs

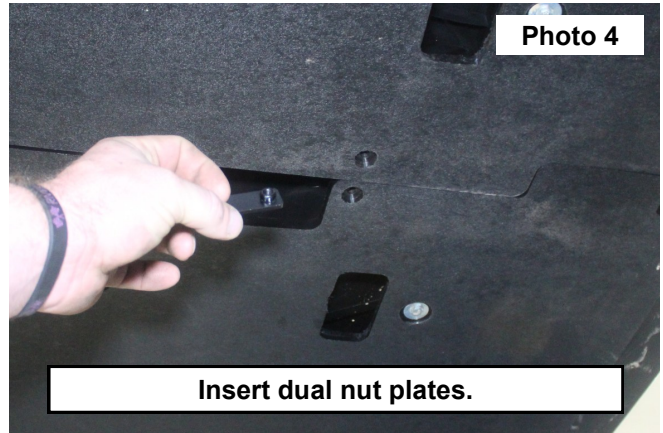
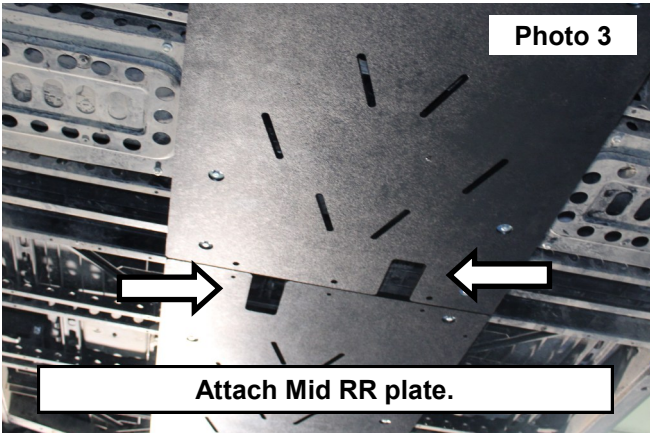


INSTALLATION INSTRUCTIONS

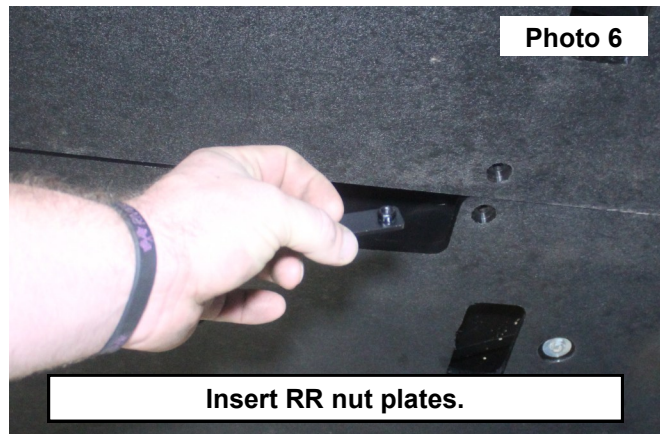
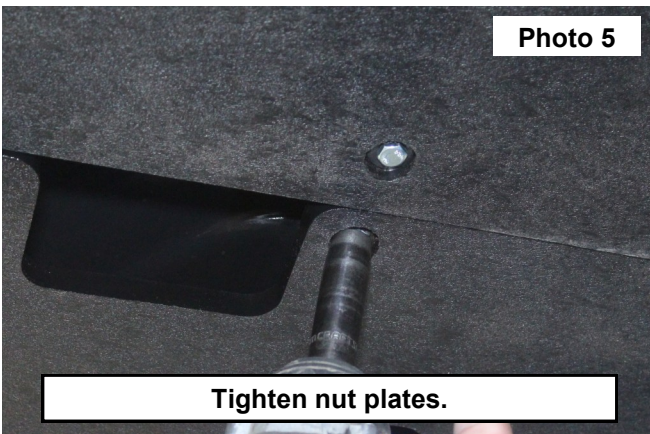
1. Lift vehicle and place on jack stands.
2. Beginning with the Mid FR plate, using (9 ea.) 6mm x 35mm and .250 fender washer, attach plate to frame. Tighten using a 10mm socket. **See Photo 1.**
3. Using a 10mm socket, attach FR plate to frame using (4 ea.) 6mm x 35mm and .250 fender washers. **See Photo 2.**



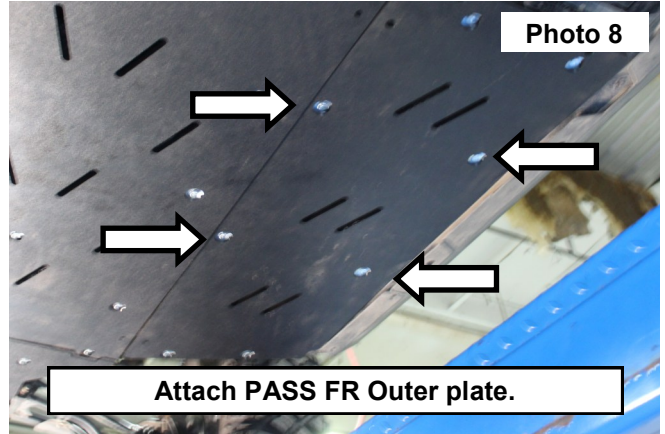
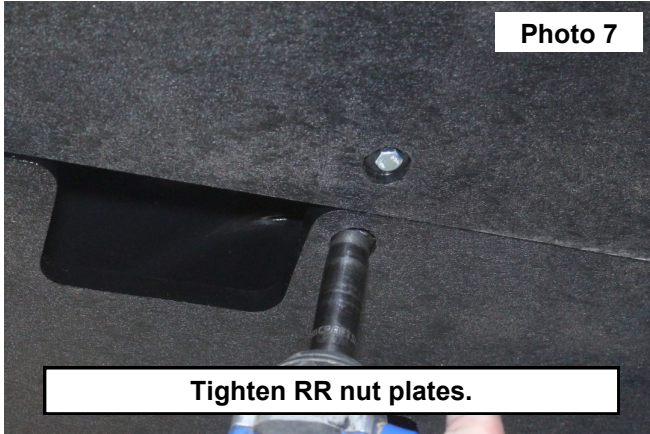
4. Attach Mid RR plate to frame using (6 ea.) 6mm and .250 fender washers. Tighten using a 10mm socket. **NOTE: Long slots should be opposite each other. See Photo 3.**
5. Insert (3ea.) dual nut plates between Mid FR and Mid RR plates. **See Photo 4.**



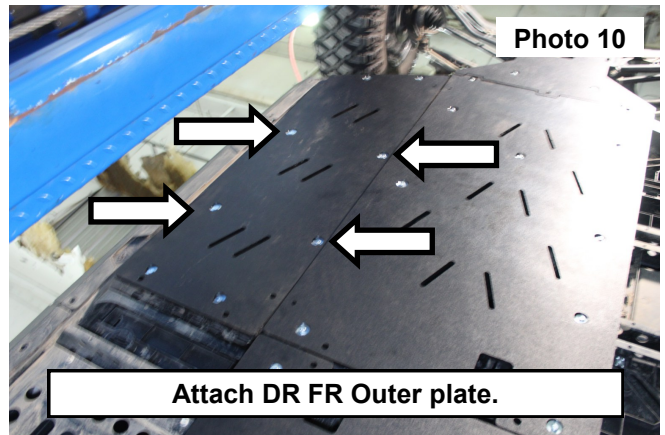
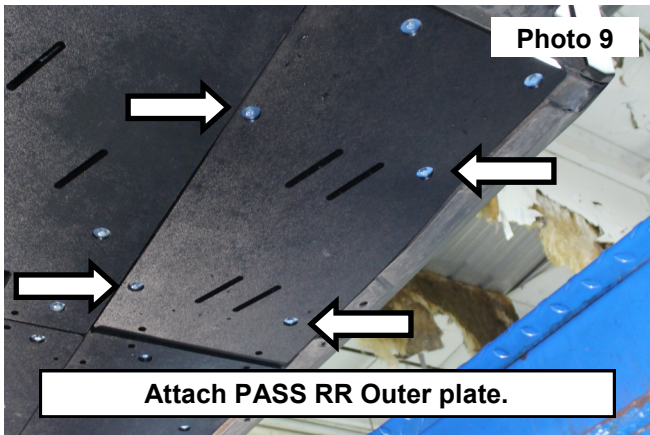
6. Using (6 ea.) 6mm x 25mm hex bolt and .250 flat washers and tighten using a 10mm socket. **See Photo 5.**
7. Insert (3ea.) dual nut plates between Mid RR and RR plates. **See Photo 6.**



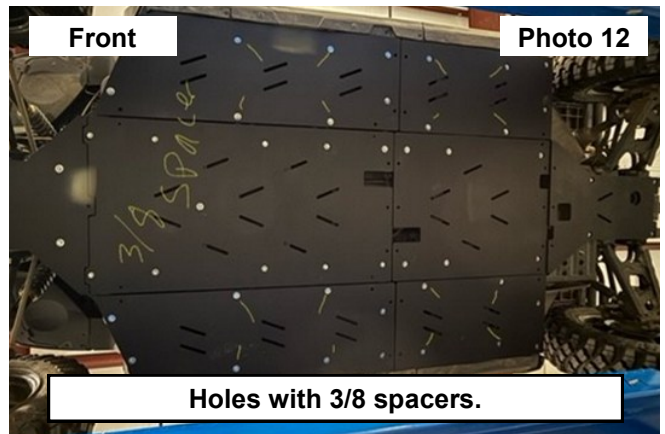
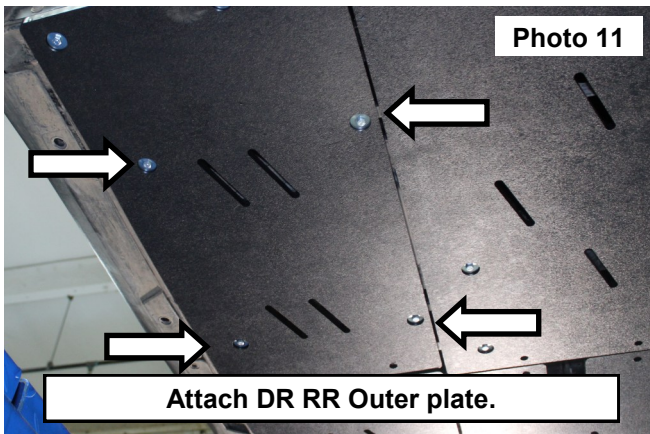
8. Using (6 ea.) 6mm x 25mm hex bolt and .250 flat washers and tighten using a 10mm socket. **See Photo 7.**
9. Beginning on PASS side, attach FR Outer plate using (8 ea.) 6mm x 35mm and .250 fender washer, to frame. Tighten using 10mm socket. **NOTE: Use (4 ea.) 3/8 spacers on 4 middle bolts. See Photo 8.**



10. Attach PASS side RR Outer plate using (6 ea.) 6mm x 35mm and .250 fender washer, to frame. Tighten using 10mm socket. **NOTE: Use (4 ea.) 3/8 spacers on 4 front bolts. See Photo 9.**
11. Beginning on DR side, attach FR Outer plate using (8 ea.) 6mm x 35mm and .250 fender washer, to frame. Tighten using 10mm socket. **NOTE: Use (4 ea.) 3/8 spacers on 4 middle bolts. See Photo 10.**



12. Attach DR side RR Outer plate using (6 ea.) 6mm x 35mm and .250 fender washer, to frame. Tighten using 10mm socket. **NOTE: Use (4 ea.) 3/8 spacers on 4 front bolts. See Photo 11.**
13. Marked holes have the 3/8 spacers. **See Photo 12.**



By purchasing any item sold by Rough Country, LLC, the buyer expressly warrants that he/she is in compliance with all applicable, State, and Local laws and regulations regarding the purchase, ownership, and use of the item. It shall be the buyer's responsibility to comply with all Federal, State and Local laws governing the sales of any items listed, illustrated or sold. The buyer expressly agrees to indemnify and hold harmless Rough Country, LLC for all claims resulting directly or indirectly from the purchase, ownership, or use of the items.

