

TOYOTA 2025 TACOMA CREW CAB ROOF RACK

Thank you for choosing Rough Country for all your vehicle needs.

Please read instructions before beginning installation. Check the kit hardware against the kit contents shown below. Be sure you have all needed parts and know where they go.

If question exist, please call us @1-800-222-7023. We will be happy to answer any questions concerning this product.

Check all fasteners for proper torque. Check to ensure for adequate clearance between all components.

Check and retighten wheels at 50 miles and again at 500 miles. Periodically check all hardware for tightness.

KIT CONTENTS:

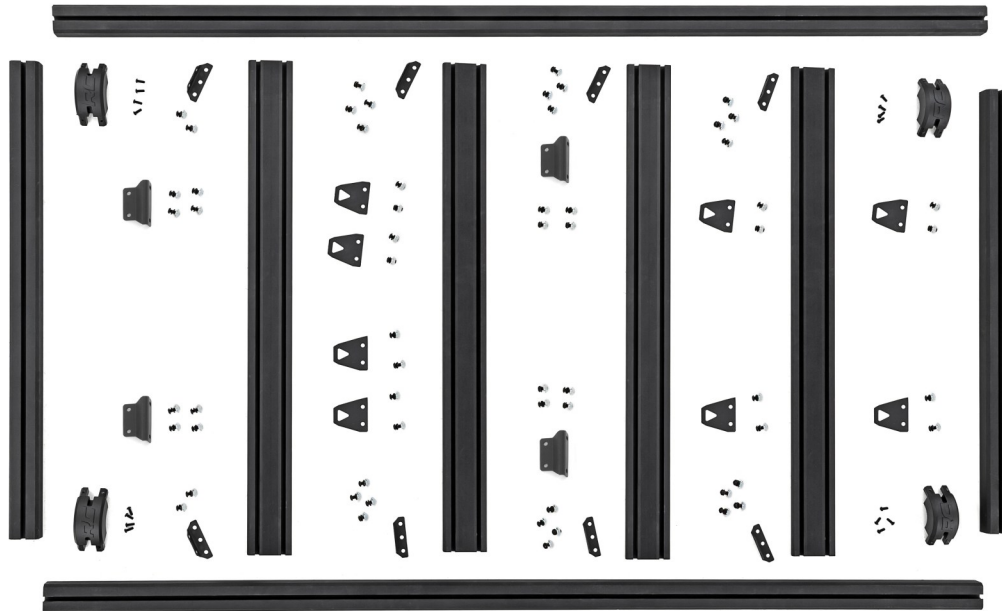
- 2-Side Rail
- 2-Front/Rear Rails
- 4-End Caps
- 4-Cross Rails
- 1-FR DR Bracket
- 1-FR PASS Bracket
- 2-RR Bracket
- 8- Cross Rail Bracket
- 8-Tie Down Bracket

TOOLS NEEDED:

- 4mm Allen Wrench
- 5mm Allen Wrench
- Small Pry Tool

HARDWARE INCLUDED:

- 16-6mm x 15mm Button Head
- 8-8mm Flat Washer
- 56-8mm T-slot Nut
- 56-Lock Washer
- 56-8mm x 16mm Button Head
- 8-6mm x 20 Button Head
- 8-6mm Flat Washer



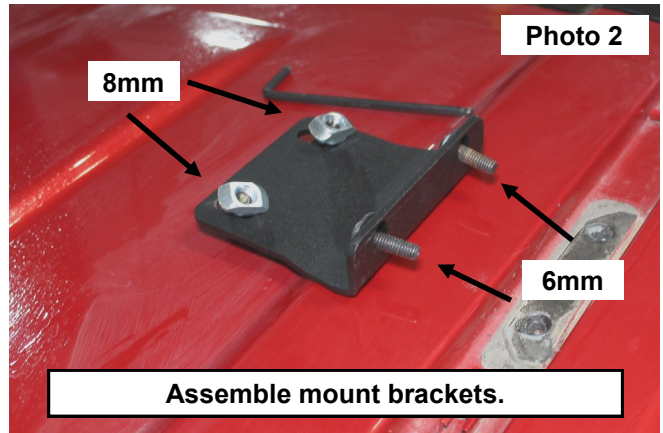
Torque Specs:

Size	Grade 5	Grade 8	Size	Class 8.8	Class 10.9
5/16"	15 ft/lbs	20ft/lbs	6MM	5ft/lbs	9ft/lbs
3/8"	30 ft/lbs	35ft/lbs	8MM	18ft/lbs	23ft/lbs
7/16"	45 ft/lbs	60ft/lbs	10MM	32ft/lbs	45ft/lbs
1/2"	65 ft/lbs	90ft/lbs	12MM	55ft/lbs	75ft/lbs
9/16"	95 ft/lbs	130ft/lbs	14MM	85ft/lbs	120ft/lbs
5/8"	135ft/lbs	175ft/lbs	16MM	130ft/lbs	165ft/lbs
3/4"	185ft/lbs	280ft/lbs	18MM	170ft/lbs	240ft/lbs

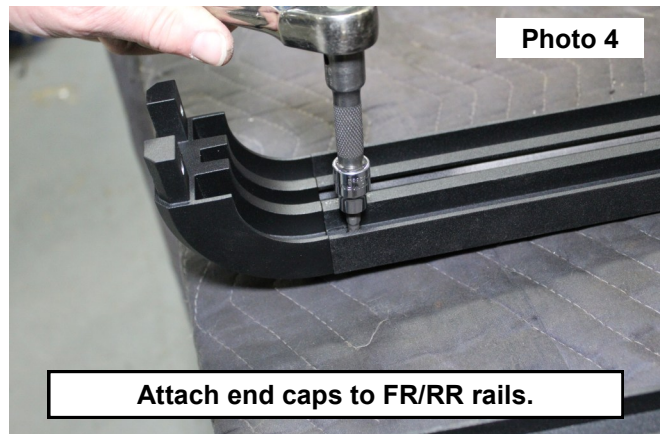
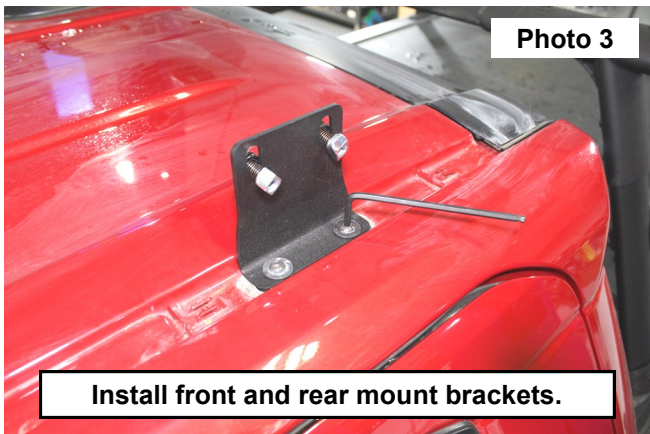


INSTALLATION INSTRUCTIONS

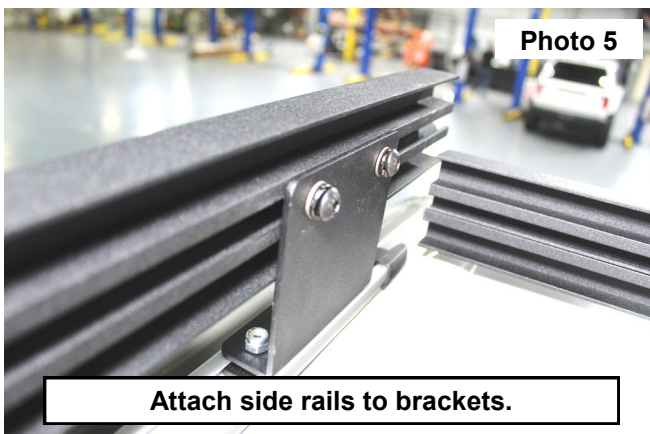
1. Remove the roof trim using a small pry tool. **See Photo 1.**
2. Loosely install the (2 per bracket) 8mm button head bolts, 8mm lock washers, 8mm flat washers, and 8mm T-slot nuts on upright of mounting brackets. **NOTE: Place (2 per bracket) 6mm x 20mm button head bolts, 6mm flat washers on bottom of all (4) mount brackets as shown in Photo 2.**



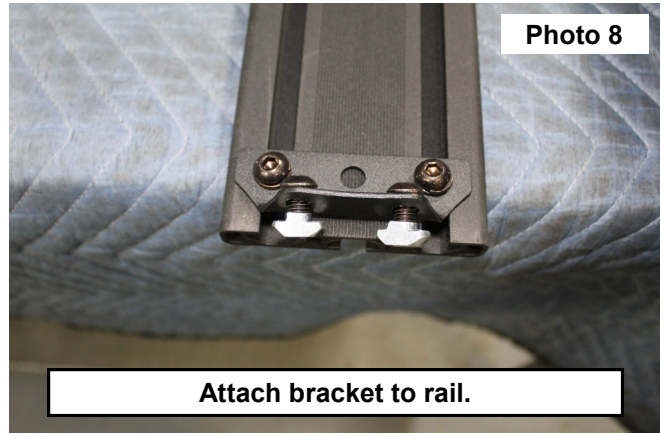
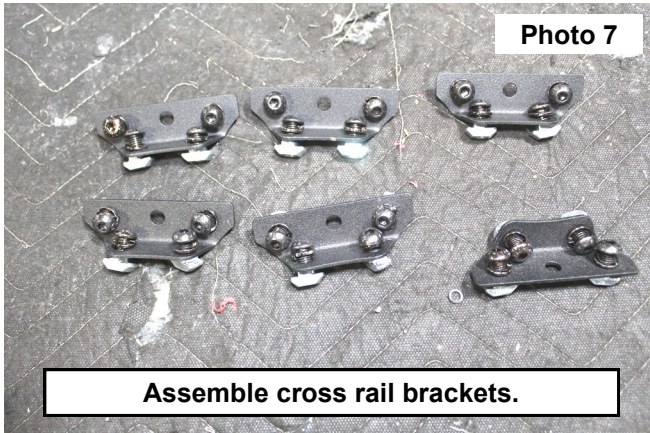
3. Install the front Dr/Pass and rear mounts and using (2 per bracket) 6mm x 20mm button head and 6mm flat washer. The 6mm hardware will be bolted to roof of vehicle. **See Photo 3. Rear DR pictured.**
4. Using a 4mm allen wrench, attach end caps to each of the FR/RR rails using (2 per rail) 6mm x 15mm button head. **See Photo 4.**



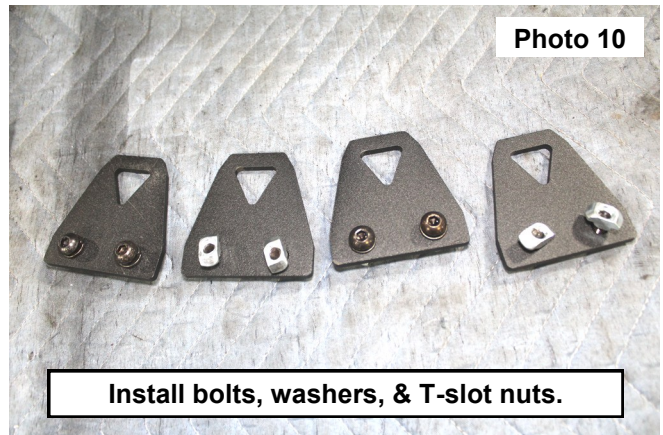
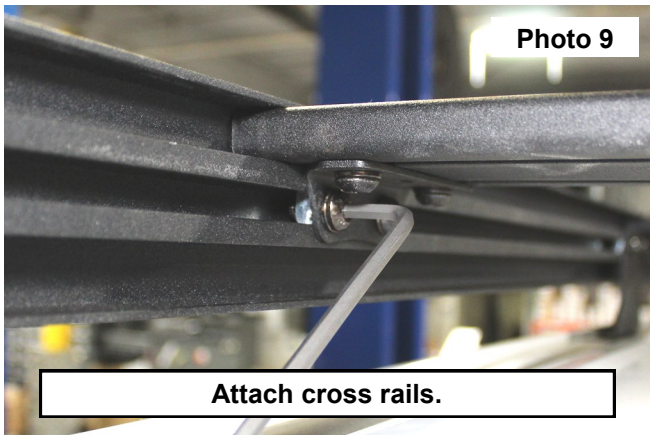
5. Secure side rails on T-slot nuts. Do not fully tighten hardware. **See Photo 5.**
6. Using a 4mm allen wrench, attach FR/RR rails to side rails using (2 per rail) 6mm x 15mm button head. **See Photo 6.**



7. Assemble cross rail using (4 per bracket) 8mm button head bolt, 8mm lock washer, and 8mm T-slot nuts. **See Photo 7.**
8. Slide the cross rail bracket to the cross rail using the wider side of the bracket. Place cross rail in desired location and tighten the t-slot nuts using a 5mm Allen wrench. **See Photo 8 and Photo 9.**



9. Adjust final fitment to desired location and tighten all hardware.
10. Install the supplied 8mm x 16mm button head bolts, 8mm lock washers, and 8mm t-slot nuts into the (8) tie-down bracket. **See Photo 10.**



11. Slide the T-slot nuts into the T rail and place each bracket in the desired location. **See Photo 11.**
12. Tighten each bolt using a 5mm Allen. **See Photo 12.**



By purchasing any item sold by Rough Country, LLC, the buyer expressly warrants that he/she is in compliance with all applicable, State, and Local laws and regulations regarding the purchase, ownership, and use of the item. It shall be the buyers responsibility to comply with all Federal, State and Local laws governing the sales of any items listed, illustrated or sold. The buyer expressly agrees to indemnify and hold harmless Rough Country, LLC for all claims resulting directly or indirectly from the purchase, ownership, or use of the items.

