

Jeep 2018-24 JL/JT M1R Reservoir Front Shocks

Thank you for choosing Rough Country for all your vehicle needs.

Please read instructions before beginning installation. Check the kit hardware against the kit contents shown below. Be sure you have all needed parts and know where they go.

If question exist, please call us @1-800-222-7023. We will be happy to answer any questions concerning this product.

Check all fasteners for proper torque. Check to ensure for adequate clearance between all components.

Periodically check all hardware for tightness.

Kit Contents:

Front Shocks x2
Front Driver Reservoir Bracket x1
Front Passenger Reservoir Bracket x1

Tools Needed:

9/16" Wrench or Socket
19mm Wrench or Socket
Drill Motor
7/32" Bit
Paint Pen

Hardware Included:

Reservoir Bracket W/ Bolts x4



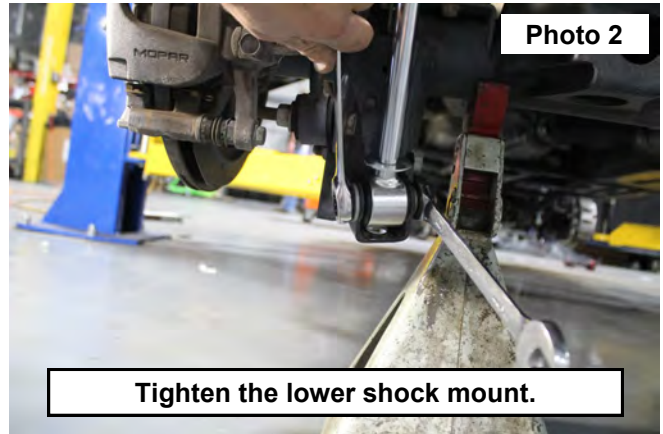
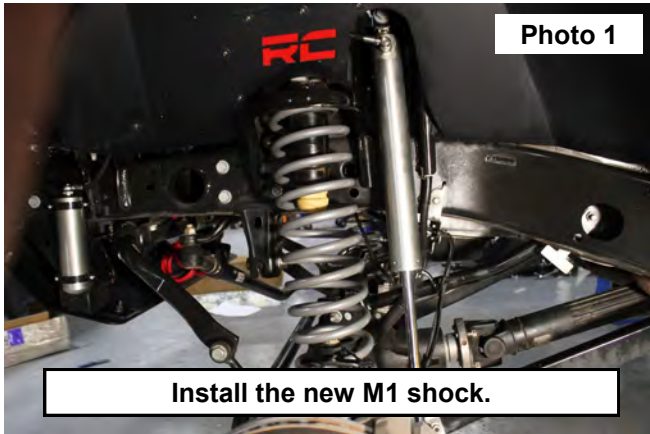
Torque Specs:

Size	Grade 5	Grade 8	Size	Class 8.8	Class 10.9
5/16"	15 ft/lbs	20ft/lbs	6MM	5ft/lbs	9ft/lbs
3/8"	30 ft/lbs	35ft/lbs	8MM	18ft/lbs	23ft/lbs
7/16"	45 ft/lbs	60ft/lbs	10MM	32ft/lbs	45ft/lbs
1/2"	65 ft/lbs	90ft/lbs	12MM	55ft/lbs	75ft/lbs
9/16"	95 ft/lbs	130ft/lbs	14MM	85ft/lbs	120ft/lbs
5/8"	135ft/lbs	175ft/lbs	16MM	130ft/lbs	165ft/lbs
3/4"	185ft/lbs	280ft/lbs	18MM	170ft/lbs	240ft/lbs

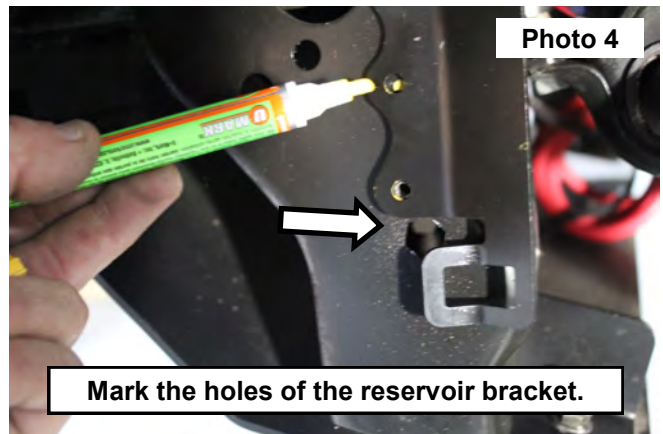


INSTALLATION INSTRUCTIONS

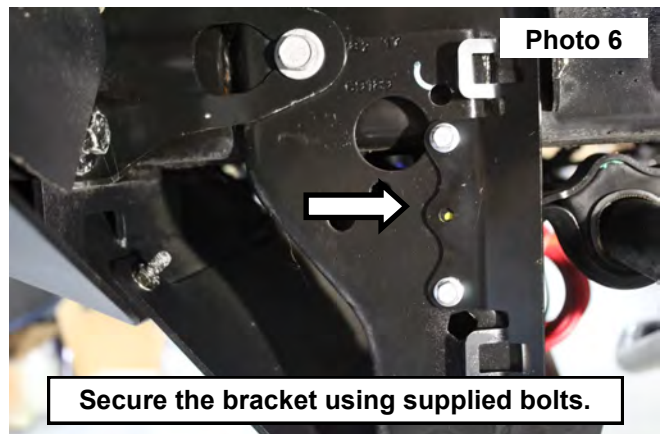
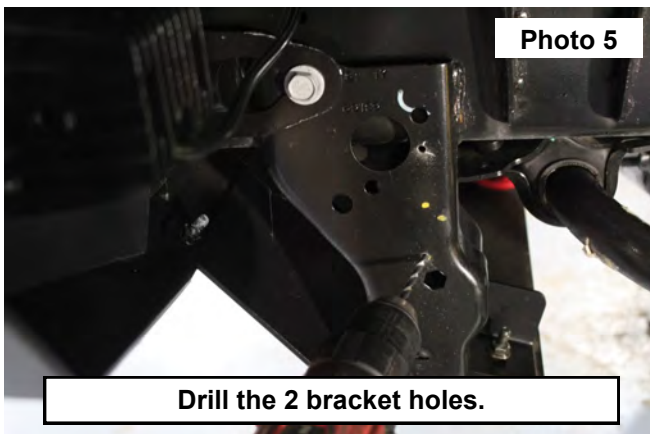
1. Install the new M1R shock into the upper mount and route the reservoir hose toward the front of the vehicle. **See Photo 1.**
2. Install the shock into the axle mount, tighten using a 19mm wrench and socket. **See Photo 2.**



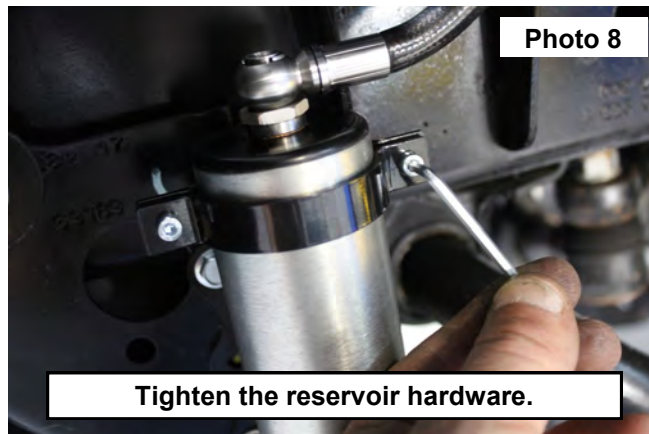
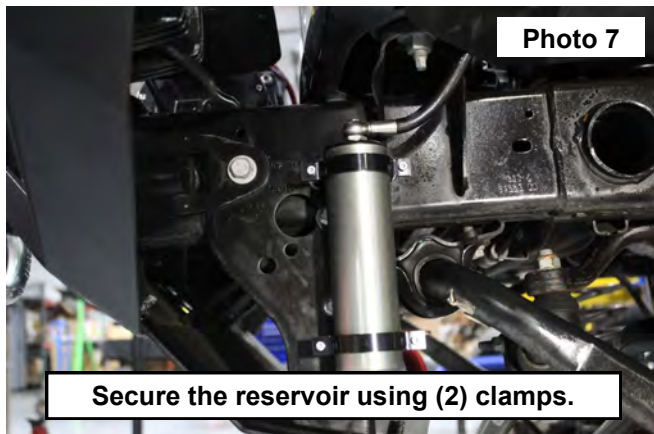
3. Tighten the upper mount using a 19mm wrench. **See Photo 3.**
4. Place the front reservoir bracket just above the hexed hole in the front frame mount. Then use a paint pen to mark the top and bottom hole. **See Photo 4.**



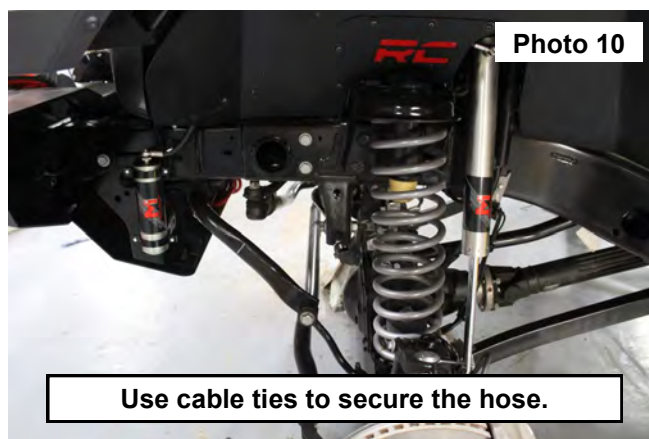
5. Using a drill motor and a 7/32" bit, drill the top and bottom holes into the frame mount. **See Photo 5.**
6. Bolt the bracket to the frame mount using (2) of the supplied 3/8" self tapping bolts. Place the clamp side of the bracket toward the axle and tighten using a 9/16" Socket. **See Photo 6.**



7. Secure the (2) reservoir clamps around the bracket and the shock reservoir. **See Photo 7.**
8. Center the reservoir in the bracket and tighten the bolts in the clamps. **See Photo 8.**



9. Secure the reservoir hose behind the inner fender using the supplied cable ties. **See Photos 9 and 10.**



By purchasing any item sold by Rough Country, LLC, the buyer expressly warrants that he/she is in compliance with all applicable, State, and Local laws and regulations regarding the purchase, ownership, and use of the item. It shall be the buyers responsibility to comply with all Federal, State and Local laws governing the sales of any items listed, illustrated or sold. The buyer expressly agrees to indemnify and hold harmless Rough Country, LLC for all claims resulting directly or indirectly from the purchase, ownership, or use of the items.

