



## Toyota 10-24 5th Gen 4Runner Front and Belly Replacement

**Thank you for choosing Rough Country for all your vehicle needs.**

Please read instructions before beginning installation. Check the kit hardware against the kit contents shown below. Be sure you have all needed parts and know where they go.

If question exist, please call us @1-800-222-7023. We will be happy to answer any questions concerning this product.

Check all fasteners for proper torque. Check to ensure for adequate clearance between all components.

Check and retighten wheels at 50 miles and again at 500 miles. Periodically check all hardware for tightness.

### KIT CONTENTS:

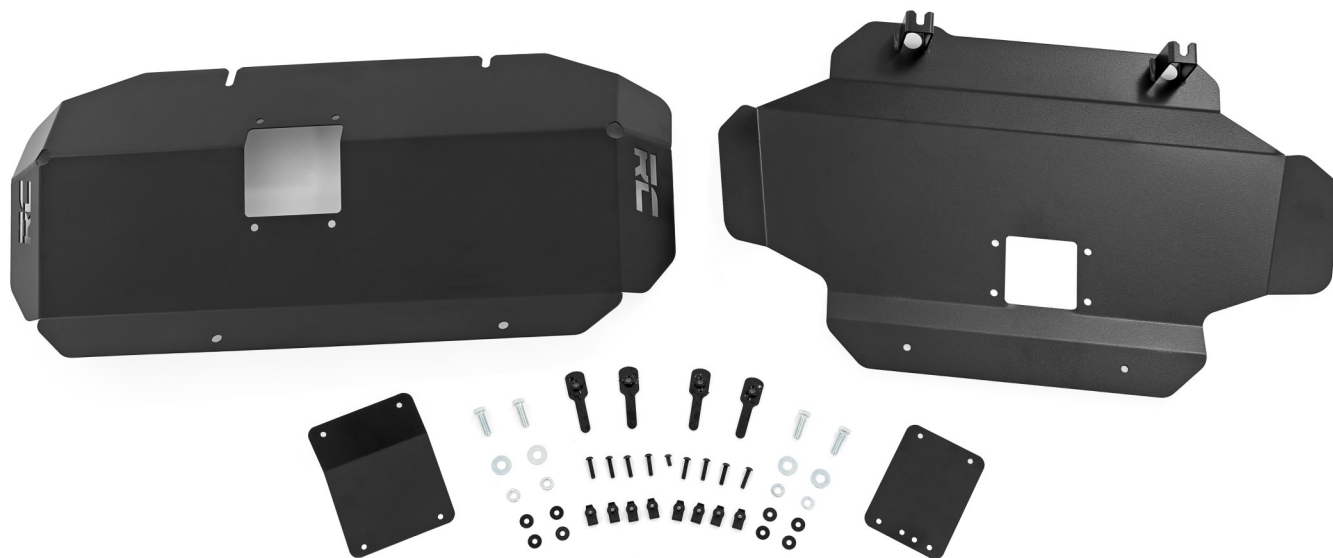
- 1- 5th Gen Front Skid Plate
- 1- 5th Gen Oil Filter Cover
- 1- 5th Gen Belly Skid Plate
- 1- 6th Gen Drain Cover

### TOOLS NEEDED:

- Jack and Jack Stands
- 4mm Allen Wrench
- 12mm Socket or Wrench
- 14mm Socket or Wrench

### HARDWARE INCLUDED:

- 8- 6mm-1.0 Body Clips
- 8- 6mm Flat Washer
- 8- 6mm-1.25 Button Head
- 4- .375-16 x 1.25 Hex Bolt
- 4- .375 Flat Washer
- 4- .375 Lock Washer
- 4-3/8 Flagnut



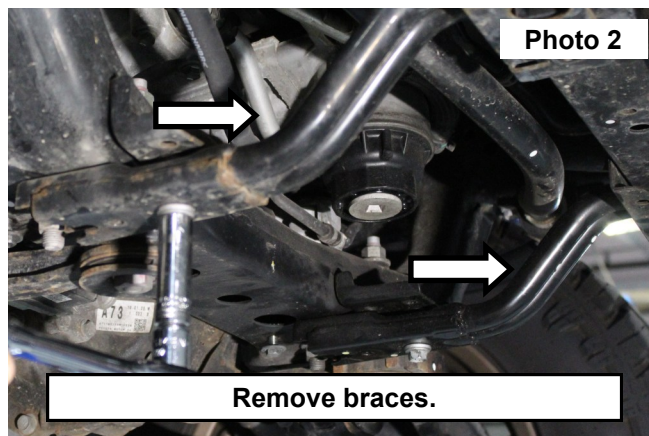
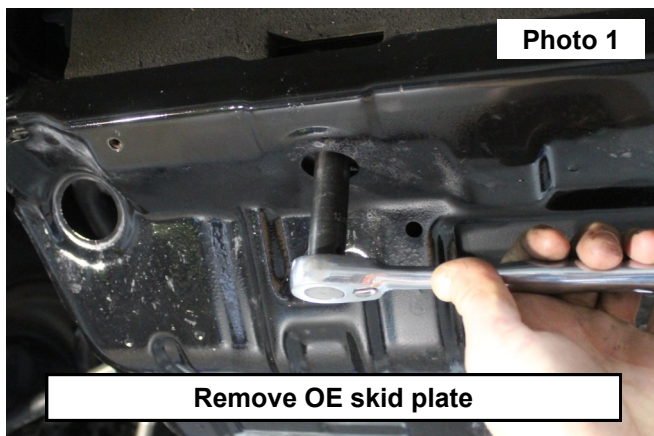
### Torque Specs:

Size	Grade 5	Grade 8	Size	Class 8.8	Class 10.9
5/16"	15 ft/lbs	20ft/lbs	6MM	5ft/lbs	9ft/lbs
3/8"	30 ft/lbs	35ft/lbs	8MM	18ft/lbs	23ft/lbs
7/16"	45 ft/lbs	60ft/lbs	10MM	32ft/lbs	45ft/lbs
1/2"	65 ft/lbs	90ft/lbs	12MM	55ft/lbs	75ft/lbs
9/16"	95 ft/lbs	130ft/lbs	14MM	85ft/lbs	120ft/lbs
5/8"	135ft/lbs	175ft/lbs	16MM	130ft/lbs	165ft/lbs
3/4"	185ft/lbs	280ft/lbs	18MM	170ft/lbs	240ft/lbs

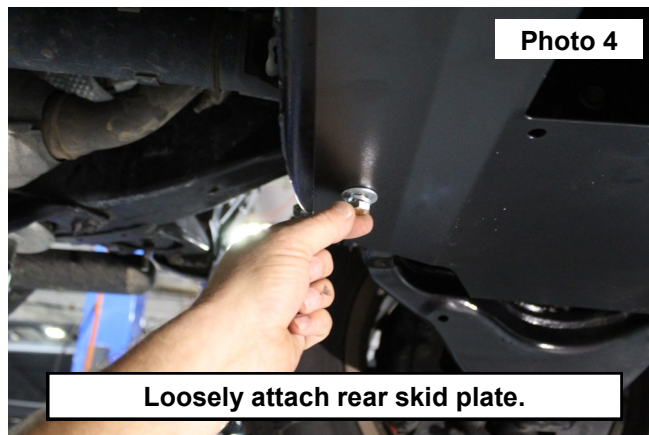
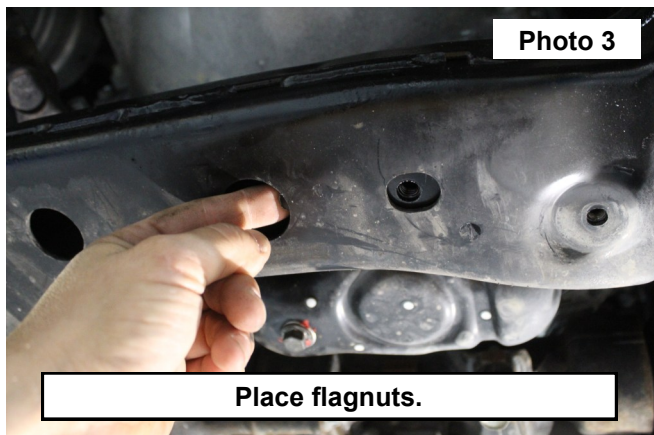


## INSTALLATION INSTRUCTIONS

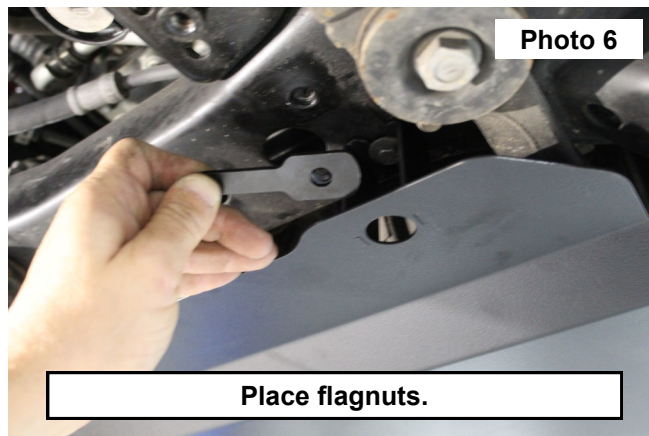
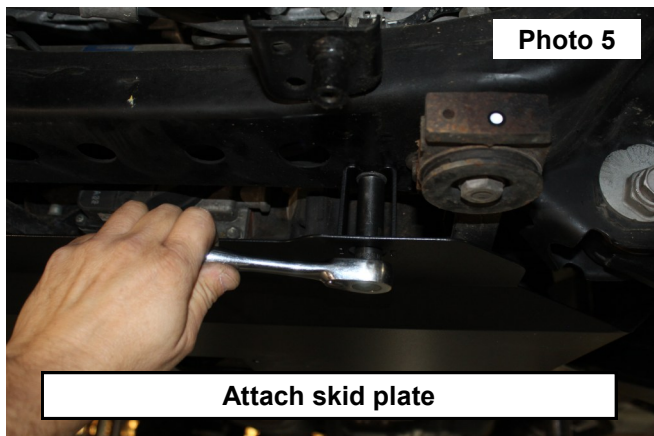
1. Lift vehicle and place on jack stands.
2. Using a 12mm on rear bolts and 14mm on front bolts, remove the OE skid plate and retain hardware. **See Photo 1.**
3. With a 14mm socket, remove the factory braces and discard the braces, but retain hardware for later use. **See Photo 2.**



4. Beginning with the rear skid plate, using (2) of the 3/8 flag nuts, place inside the OE crossmember. **See Photo 3.**
5. Attach the rear of the rear skid plate using (2 ea.) 3/8 bolts, 3/8 flat washers, and 3/8 lock washers. **See Photo 4.**

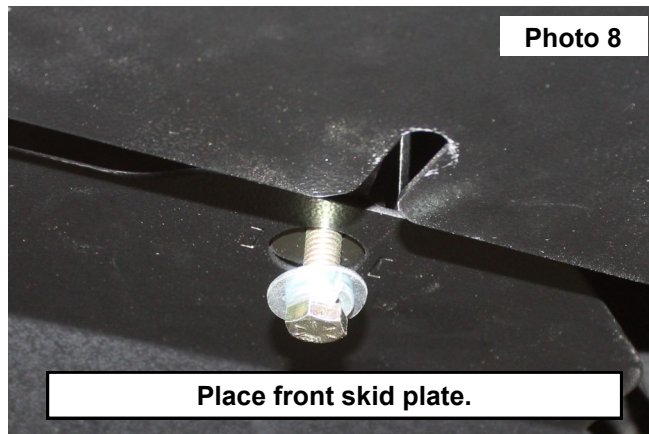
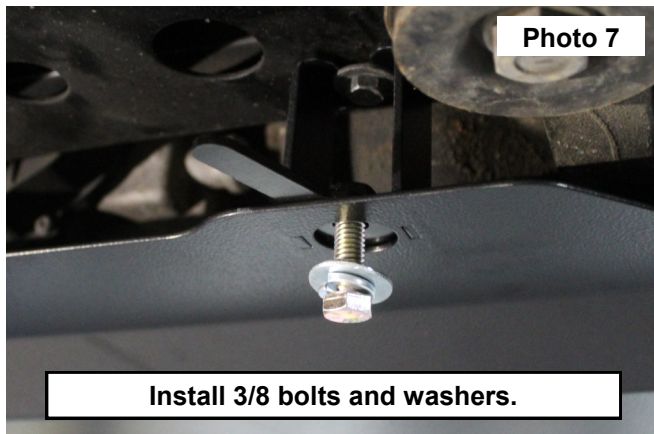


6. Using the retained bolts from the braces, take the 14mm socket and attach the front of the rear skid plate. **See Photo 5.**
7. Place the remaining (2) 3/8 flagnuts in the pocket on the rear skid plate. **See Photo 6.**

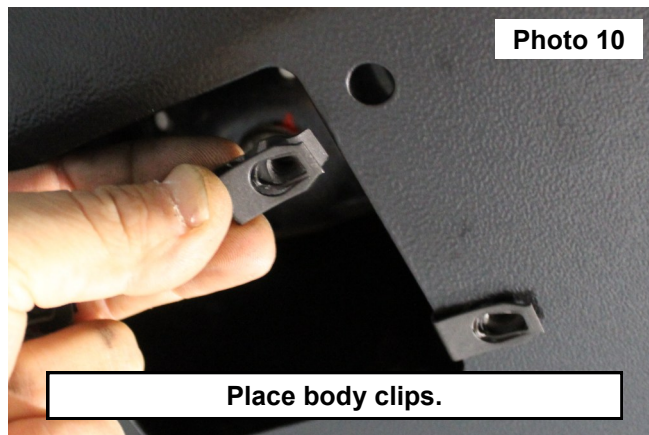
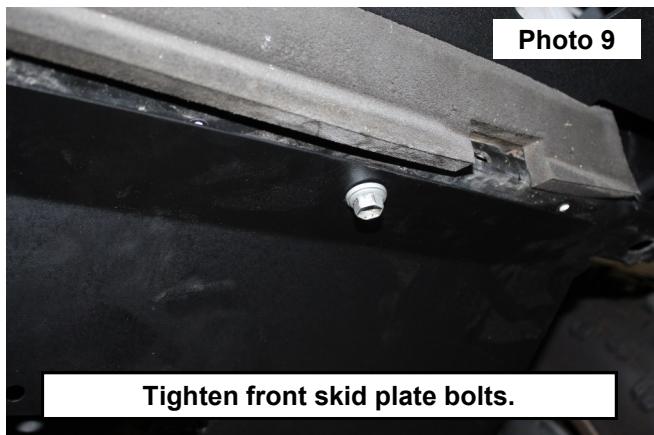


## INSTALLATION INSTRUCTIONS

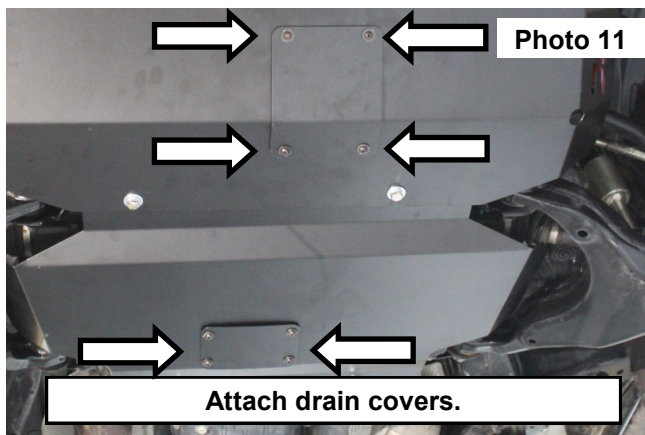
8. Loosely attach the skid plate using (2 ea.) 3/8 bolts, 3/8 flat washers, and 3/8 lock washers. **Note: Bolt inside stand off is OE bolt. See Photo 7.**
9. Slide the front skid plate on to the bolts. **See Photo 8.**



10. Using the 14mm socket, tighten the retained bolts from the front skid plate. **See Photo 9.**
11. Place the body clips on the drain and filter holes. **See Photo 10.**



12. Insert (4 ea.) 6mm button head bolt and 6mm flat washer in clips.
13. Using a 4 mm allen wrench, tighten the button head bolts. **See Photo 11.**



By purchasing any item sold by Rough Country, LLC, the buyer expressly warrants that he/she is in compliance with all applicable, State, and Local laws and regulations regarding the purchase, ownership, and use of the item. It shall be the buyers responsibility to comply with all Federal, State and Local laws governing the sales of any items listed, illustrated or sold. The buyer expressly agrees to indemnify and hold harmless Rough Country, LLC for all claims resulting directly or indirectly from the purchase, ownership, or use of the items.

