



WARNING: This product contains a chemical known to the State of California to cause Cancer and Reproductive Harm. For more information, go to www.P65Warnings.ca.gov.

2009-2016 FORD SUPER DUTY 2WD/4WD REAR WHEEL WELL LINER

PLEASE READ INSTRUCTIONS CAREFULLY BEFORE STARTING THE INSTALLATION.

NOTE: FOR EASIER INSTALLATION, REMOVE THE TIRE.

IF INSTALLING AFTERMARKET FLARES, THE INSTALL OF THE WHEEL WELL LINER MAY VARY FROM THIS INSTRUCTION.

INCLUDED IN HARDWARE KIT:

1.



Driver Side & Passenger
Side Liner
1 pr

2.



U Clip
12 pcs

3.



Truss Head Screw
12 pcs

4.



Plastic Retainer
4 pcs

TOOLS NEEDED:

10mm Socket or Wrench
13mm Socket or Wrench
#2 Phillips Screwdriver
Pry Tool
Awl (optional)

PREPARATIONS:

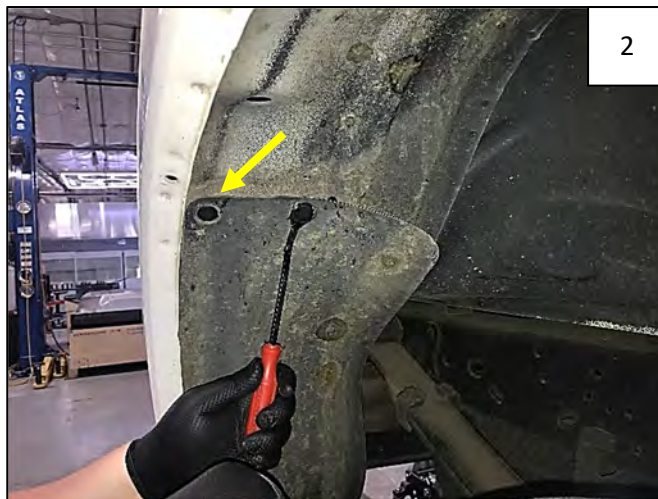
Please clean the interior panels of the rear wheel well.

If vehicle comes equipped with factory wheel well liners, these will need to be removed, along with any fasteners involved, including inner clips.

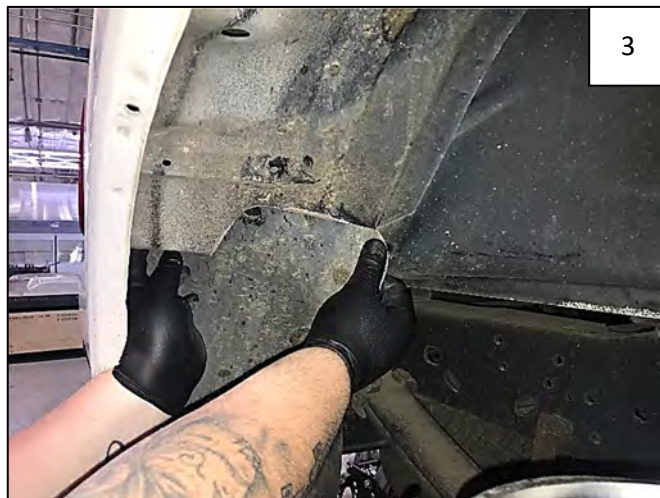
REAR WHEEL WELL LINER INSTALLATION



OPTIONAL: To assist in installing the wheel well liner in a tight wheel well, use a 13mm socket/wrench and a 10mm socket/wrench to remove fasteners holding front and rear struts in place, loosening up the struts. ***These will need to be reinstalled once the wheel well liner is in place.***



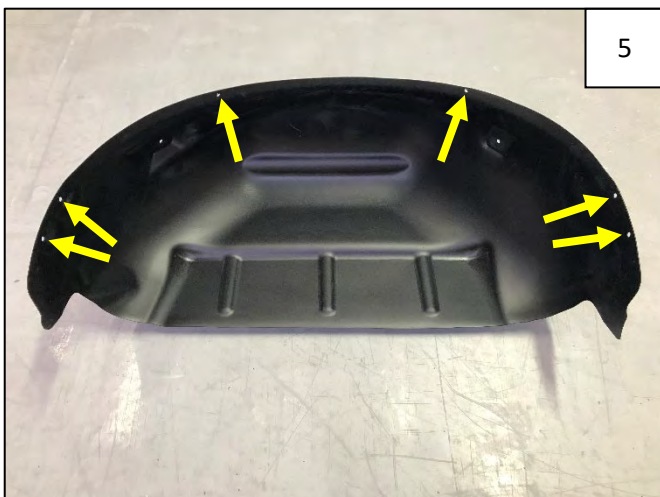
Use a pry tool to disengage 2 plastic retainers at top of the plastic guard at rear of wheel well.



Tuck top of plastic guard behind sheet metal to keep it out of the way.



Install 6 supplied "U" Clips over holes located along outer lip of Rear Wheel Well Liner. Flat side of clip will face out into wheel well when part is installed.



Clip locations.



Slide the Rear Wheel Well Liner behind wheel at rear of vehicle. It is helpful to tilt the liner at a 45-degree angle at front of wheel and then straighten it out once it's behind the wheel.



Tuck Rear Wheel Well Liner behind sheet metal at outward facing edges. Use a plastic pry tool as needed.

If you disengaged the front and rear struts in Step 1, please reinstall this hardware for safety.



Install a supplied Plastic Retainer through each of the 2 holes located at the back of the wheel well liner. Use an awl to help locate these holes if needed.



Install a supplied Truss Head screw through factory holes in fender lip and into clips installed in Steps 4-5. Use an awl to help locate clip holes if needed.

NOTE: Only 5 screws will be used. Depending on your model, there will be a hole location variance. The extra clip will not get a screw.



Installation is complete. Repeat for other side.