

ROUGH COUNTRY

SUSPENSION SYSTEMS®

9214504A0



WARNING: This product contains a chemical known to the State of California to cause Cancer and Reproductive Harm. For more information, go to www.P65Warnings.ca.gov.

2004-2014 FORD F-150 2WD/4WD REAR WHEEL WELL LINER

PLEASE READ INSTRUCTIONS CAREFULLY BEFORE STARTING THE INSTALLATION.

NOTE: FOR EASIER INSTALLATION, REMOVE THE TIRE.

INCLUDED IN HARDWARE KIT:

1.



Driver Side Liner
1 pc

2.



Passenger Side Liner
1 pc

3.



Plastic Retainer
2 pcs

4.



"J" Clip
2 pcs

5.



10mm Bolt
2 pcs

TOOLS NEEDED:

Socket Wrench with 10mm Socket
Gloves
Pliers or Pry Tool
#2 Phillips Screwdriver

PREPARATIONS:

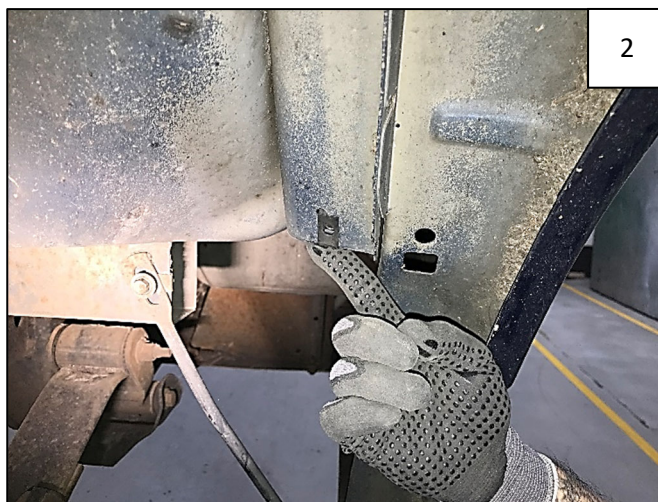
Please clean the interior panels of the rear wheel well.

If vehicle comes equipped with factory wheel well liners, these will need to be removed, along with any fasteners involved. *Retain these fasteners for further use.*

REAR WHEEL WELL LINER INSTALLATION



Using a socket wrench with a 10mm socket, remove 1 factory bolt from front strut bracket clip as shown. Retain this bolt.



If there is a strut bracket bolted into the rear wheel well, remove and retain this bolt as well. If there is no rear bracket, slide a supplied "J" Clip over innermost round hole as shown.



Slide the Rear Wheel Well Liner behind wheel at rear of vehicle. It is helpful to tilt the liner at a 45-degree angle at front of wheel and then straighten it out once it's behind the wheel.

NOTE: It may help to use a lift or remove the rear wheel.



Tuck Rear Wheel Well Liner under metal fender lip at all outward facing edges.

NOTE: Use gloves to protect your hands.



Use a plastic pry tool to assist in tucking the wheel well liner in place.



Reinstall factory bolt removed in Step 1, making sure bolt is threaded into the clip on the strut bracket. Tighten bolt.



If your vehicle had a rear strut bracket, install this bolt as well. If you installed a "J" Clip in Step 2, thread a supplied 10mm Bolt into clip. Tighten bolt.



Press a supplied Plastic Retainer through hole at back of wheel well liner and into factory hole in frame rail. Push to engage.



Installation is complete. Repeat for other side.