

ROUGH COUNTRY

921410150

Toyota 2025 4Runner BA2 Steps

Thank you for choosing Rough Country for all your vehicle needs.

Please read instructions before beginning installation. Check the kit hardware against the kit contents shown below. Be sure you have all needed parts and know where they go.

If question exist, please call us @1-800-222-7023. We will be happy to answer any questions concerning this product.

Check all fasteners for proper torque. Check to ensure for adequate clearance between all components.

Periodically check all hardware for tightness.

Kit Contents:

Driver Side Running Board x1
Pass Side Running Board x1
Front Driver Side Step Bracket x1
Front Pass Side Step Bracket x1
Mid/Rear Driver Side Step Bracket x1
Mid/Rear Pass Side Step Bracket x1

Tools Needed:

13mm Wrench or Socket

Hardware Included:

8mm x 25mm Hex Head Bolts x12
8mm Lock Washers x12
8mm Large Flat Washers x24
8mm Nylock Nuts x12
8mm x 35mm Bolt Plates x6



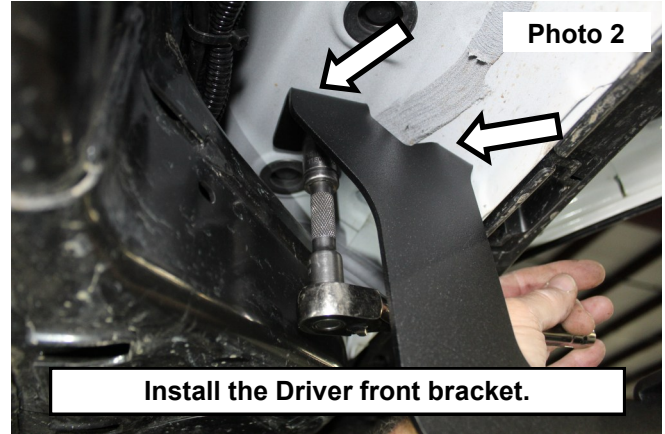
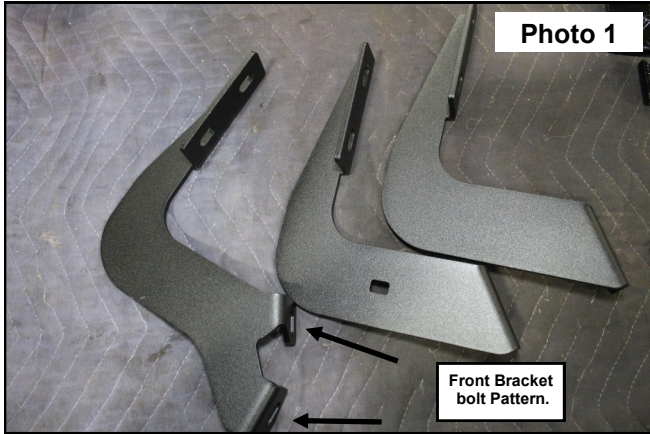
Torque Specs:

Size	Grade 5	Grade 8	Size	Class 8.8	Class 10.9
5/16"	15 ft/lbs	20ft/lbs	6MM	5ft/lbs	9ft/lbs
3/8"	30 ft/lbs	35ft/lbs	8MM	18ft/lbs	23ft/lbs
7/16"	45 ft/lbs	60ft/lbs	10MM	32ft/lbs	45ft/lbs
1/2"	65 ft/lbs	90ft/lbs	12MM	55ft/lbs	75ft/lbs
9/16"	95 ft/lbs	130ft/lbs	14MM	85ft/lbs	120ft/lbs
5/8"	135ft/lbs	175ft/lbs	16MM	130ft/lbs	165ft/lbs
3/4"	185ft/lbs	280ft/lbs	18MM	170ft/lbs	240ft/lbs

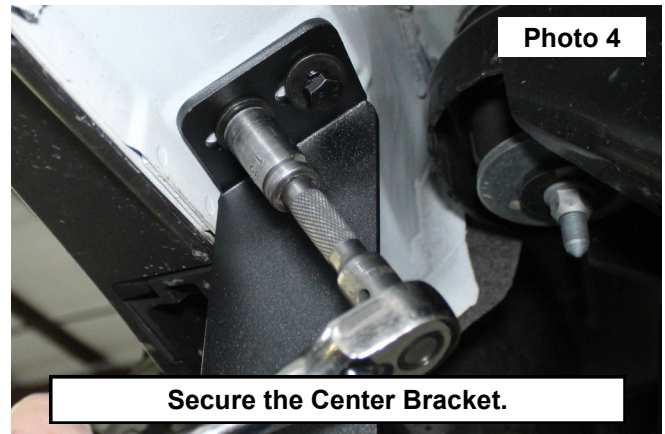
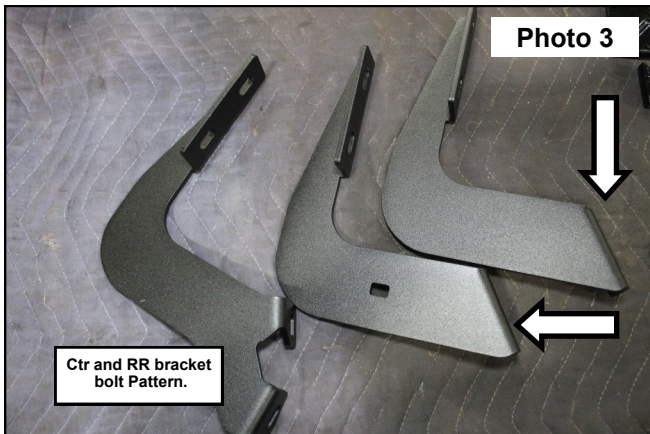


INSTALLATION INSTRUCTIONS

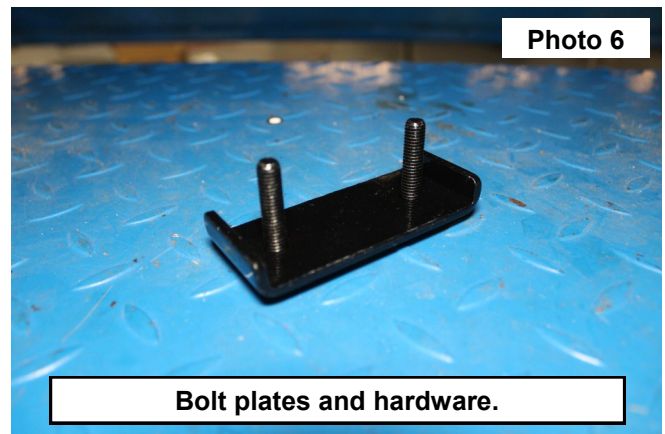
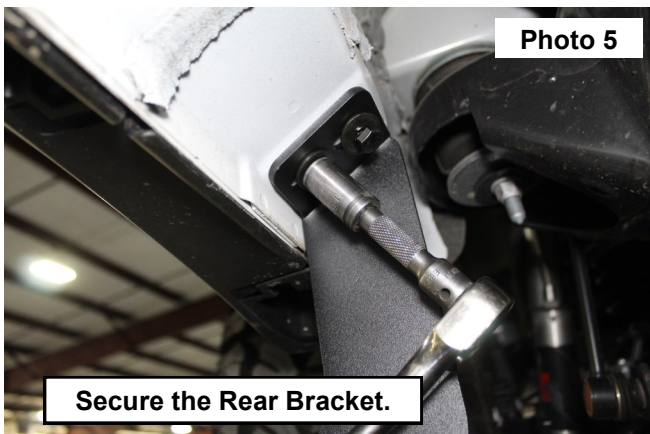
1. Locate the Driver side front step mount. Noting the bolt pattern is wider on the front bracket. **See Photo 1.**
2. Secure the Front step bracket to the body using (2 ea.) 8mm x 30mm hex head bolts, 8mm lock washers, 8mm flat washers. Snug using a 13mm Socket. **See Photo 2.**



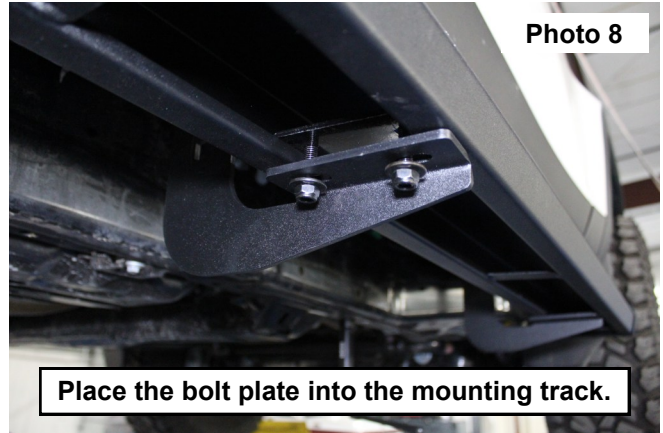
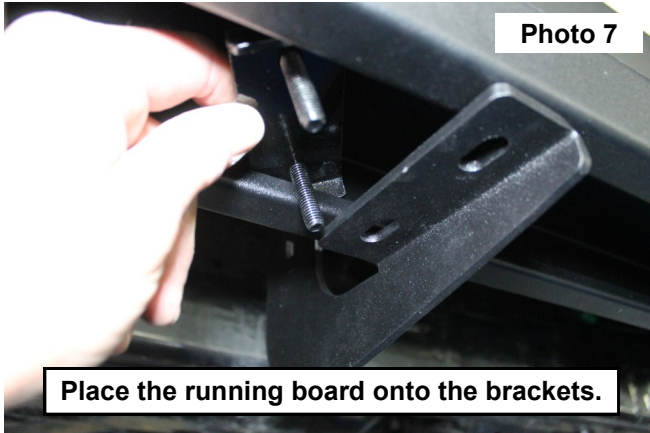
3. Locate the Center and Rear step mount. Noting the bolt pattern is narrower on these brackets. **See Photo 3.**
4. Secure the Center step bracket to the body using (2ea.) 8mm x 30mm hex head bolts, 8mm lock washers, and 8mm flat washers. Snug using a 13mm Socket. **See Photo 4.**



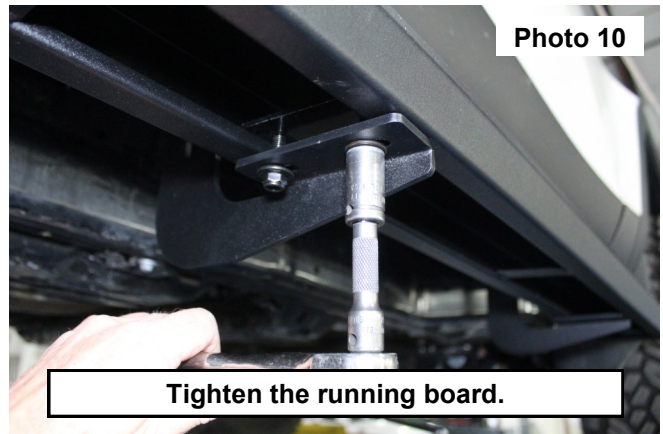
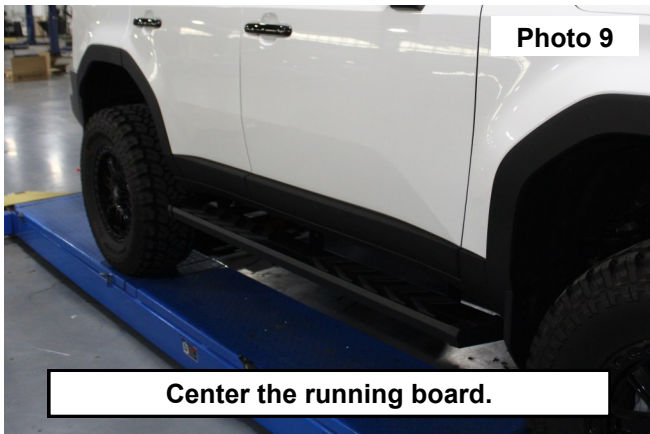
5. Secure the rear step bracket to the body using (2ea) 8mm x 30mm hex head bolts, 8mm lock washers, and 8mm flat washers. Snug using a 13mm Socket. **See Photo 5.**
6. Repeat steps 1-5 on the Passengers side of the vehicle.
7. Locate the (3) 8mm bolt plates, (6) 8mm Flat Washers and (6) 8mm nylock nuts. **See Photo 6.**



8. Insert double bolt plates in bottom channel on steps. **See Photo 7.**
9. Place double bolt plates in mounting holes on the step bracket. Using the 13mm socket, attach the running board to the step brackets. **See Photo 8.**



10. Center the running board between the front fender and the bed. **See Photo 9.**
11. Secure the bolt plate and the running board using (6ea) of the 8mm flat washers, and 8mm nylock nuts. Tighten using a 13mm Socket. **See Photo 10.**



By purchasing any item sold by Rough Country, LLC, the buyer expressly warrants that he/she is in compliance with all applicable, State, and Local laws and regulations regarding the purchase, ownership, and use of the item. It shall be the buyers responsibility to comply with all Federal, State and Local laws governing the sales of any items listed, illustrated or sold. The buyer expressly agrees to indemnify and hold harmless Rough Country, LLC for all claims resulting directly or indirectly from the purchase, ownership, or use of the items.

