



## 22 - Up Chevy 1500 FXS Bumper

Thank you for choosing Rough Country for all of your suspension needs.

Rough Country recommends that a certified technician install this system. In addition to these instructions, professional knowledge of disassemble/reassembly procedures as well as post installation checks must be known. Attempts to install this system without this knowledge and expertise may jeopardize the integrity and/or operating safety of the vehicle. Please read all the instructions before beginning the installation. Check the kit hardware against the "Kit Contents" list below. If question exist, please call us @1-800-222-7023. We will be happy to answer any questions concerning this product. Check all fasteners for proper torque. Check to ensure for adequate clearance between all components. Check and retighten wheels at 50 miles and again at 500 miles. Periodically check all hardware for tightness. Be sure you have all the needed parts and understand where they go. Also, please review the "Tools Needed" list to be certain you have the necessary tools to complete the installation.

### NOTICE TO DEALER AND VEHICLE OWNER

**⚠ WARNING** Any vehicle equipped with any Rough country product must have the "Warning to Driver" decal installed on the sun visor or dash. The decal is to act as a constant reminder for whoever is operating the vehicle of its unique handling characteristics. **INSTALLING DEALER**—It is your responsibility to install the warning decal and to forward these installation instructions on too the vehicle owner for review and to be kept in the vehicle for its service life.



## 22 - Up Chevy 1500 FXS Bumper

### TOOLS NEEDED:

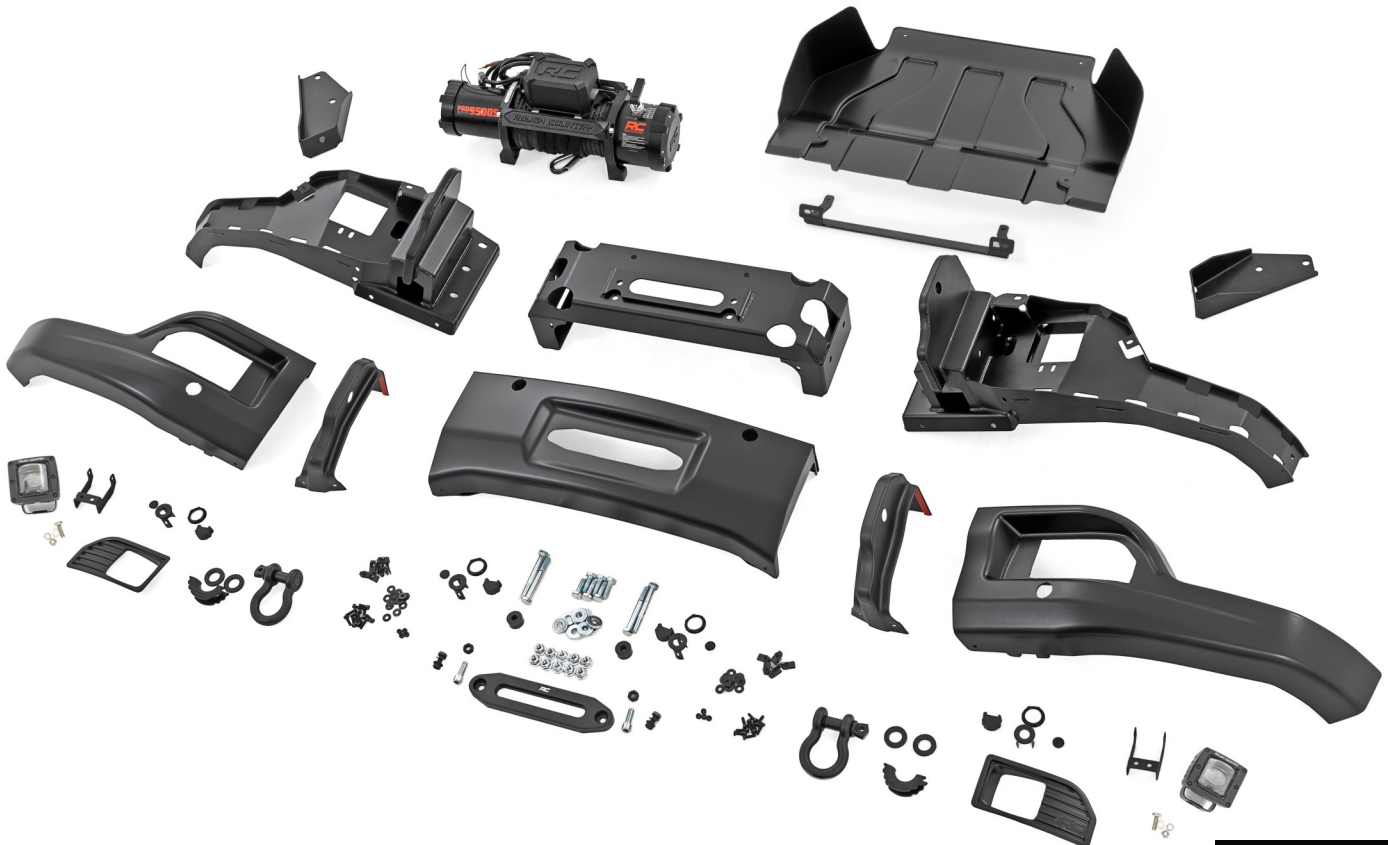
Jack  
Safety Stands  
Wheel Chocks  
Plastic Pry Tool Assortment  
Power Drill  
Step Drill Bit (to 1")  
7/64" Drill Bit  
1/8" Drill Bit  
9/32" Drill Bit  
25/64" Drill Bit  
Die Grinder with carbide bit  
File  
Carpet Shears / Scissors  
T15 Torx Driver  
10mm Hex Driver  
Phillips Head Driver  
Metric Wrench/Socket  
7mm  
10mm  
13mm  
15mm  
16mm  
18mm  
19mm

### KIT CONTENTS:

Winch Tray  
Driver Wing  
Pass Wing  
Driver Brace  
Pass Brace  
Cube Light Mount (2)  
Driver Shutter Mount  
Pass Shutter Mount  
Winch Control Extension Cable  
D-Ring Isolator Kit  
D-Ring Kit  
Bumper Sensor Mount Kit (2)  
Center Skin  
Driver Wing Skin  
Pass Wing Skin  
Driver Light Bezel  
Pass Light Bezel  
Driver Tow Hook Cover  
Pass Tow Hook Cover  
Gravel Guard  
Gravel Guard Bracket

### HARDWARE INCLUDED:

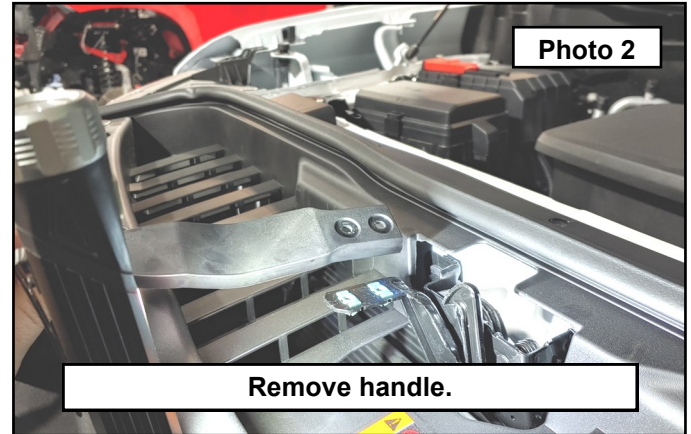
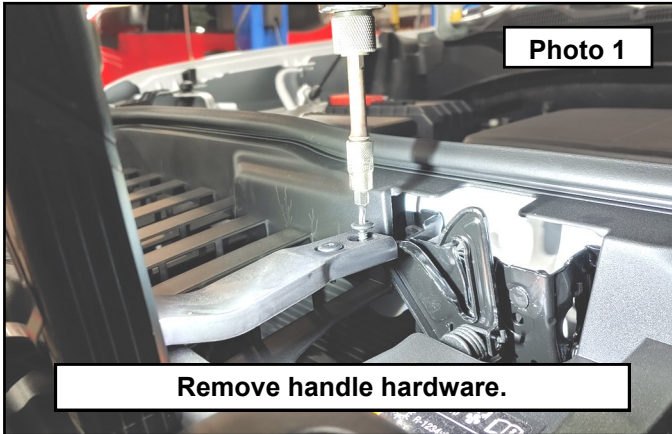
Alcohol Prep Packet (6)  
Phillips Head Self Threading Screw (2)  
5/8" Thick Spacer (2)  
Zip Tie (10)  
Flag Nut Plate (16)  
6mm Clip Nut (20)  
6mm Nutsert (4)  
6mm Nut (8)  
6mm Bolt (28)  
6mm Washer (36)  
8mm Flange Nut (2)  
10mm Flange Nut (6)  
10mm x 25mm Bolt (6)  
10mm Washer (6)  
12mm Flange Nut (10)  
12mm x 35mm Socket Head Bolt (2)  
12mm x 35mm Bolt (6)  
12mm x 100mm Bolt (4)  
12mm Washer (10)



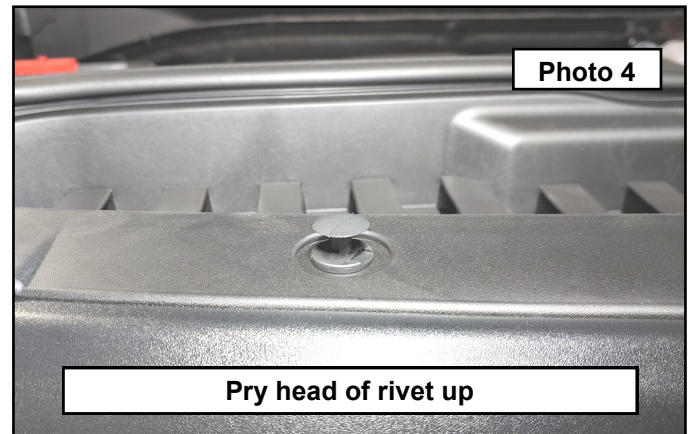
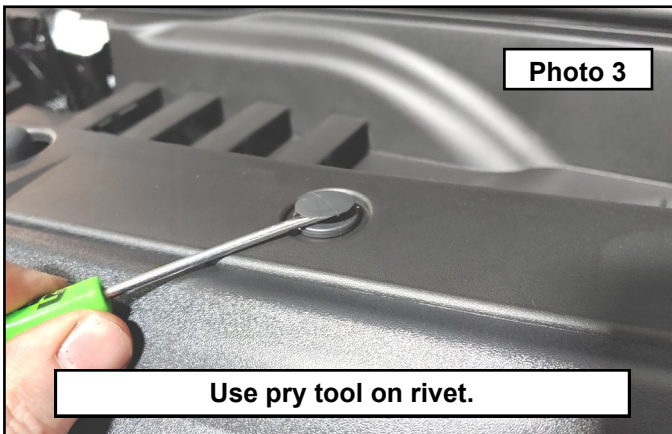


### Front Bumper Installation

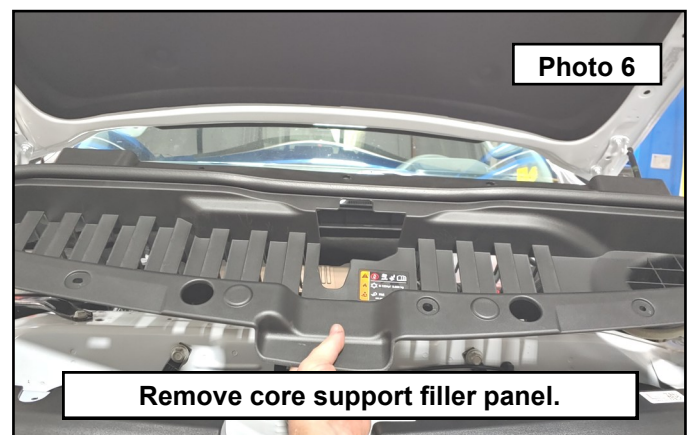
1. Park your vehicle on a clean flat surface, engage the parking brake and block the rear tires.
2. Jack the front of the vehicle up and place safety stands at the indicated lift points for the frame in the service manual. Remove the front wheels and set aside.
3. **Save all hardware removed from the vehicle unless otherwise noted.**
4. Open the hood and disconnect the negative terminal on the battery.
5. Remove the hood latch handle hardware using a T15 Torx driver. **Photo 1**
6. Remove the hood latch from the vehicle and set aside. Be sure to not close the hood during the rest of the assembly without the handle in place. **Photo 2**



7. Remove the core support filler panel by removing the plastic rivets. First locate the notch in the plastic rivet and use a pry tool to pop the head of the rivet up until you feel it click. If removed all the way, make sure to reinstall back into the rivet body for reinstallation later. **Photo 3 / 4**

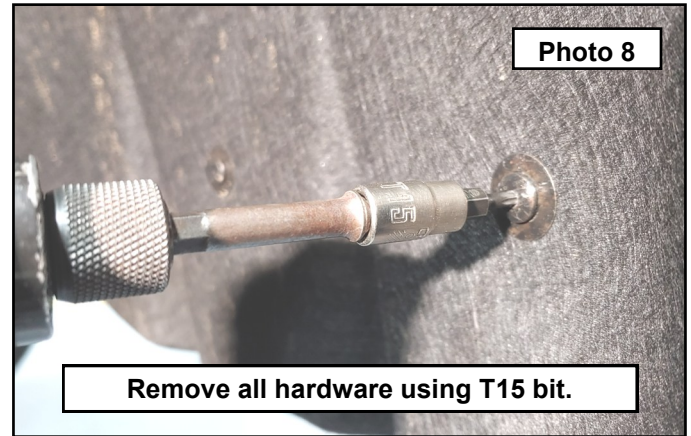
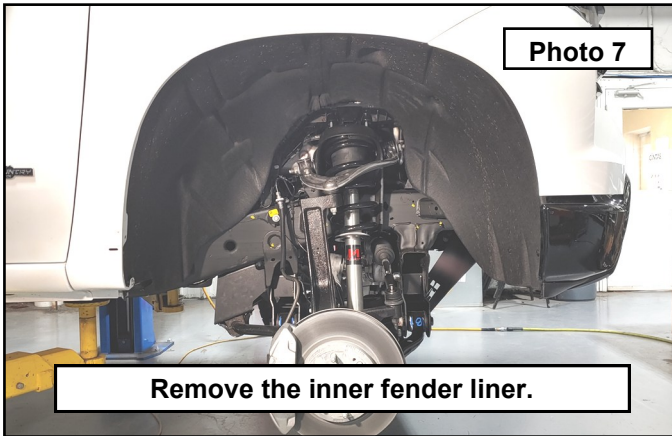


8. Pry the lower half of the plastic rivet up and out of its hole. Repeat this process around the entire core support filler panel. **Photo 5**
9. Remove the core support cover and set aside. **Photo 6**

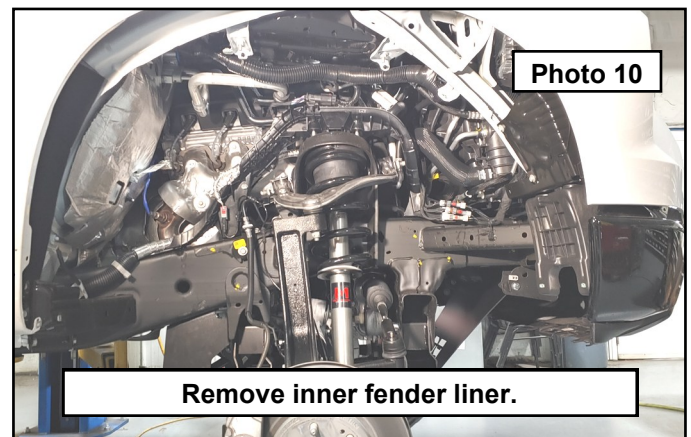
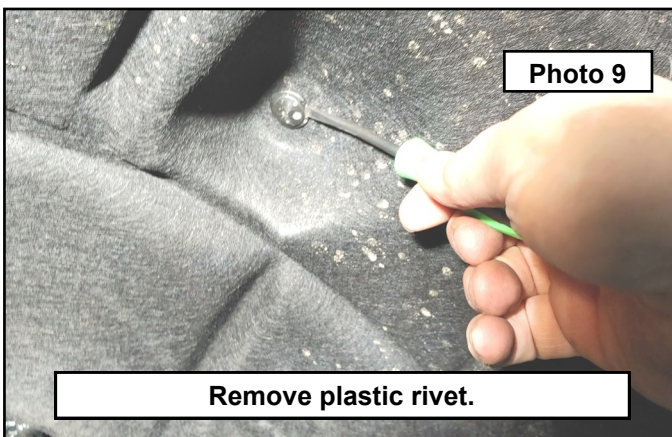




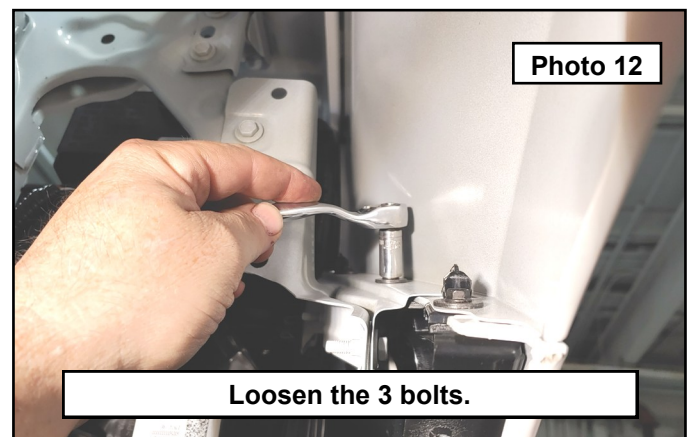
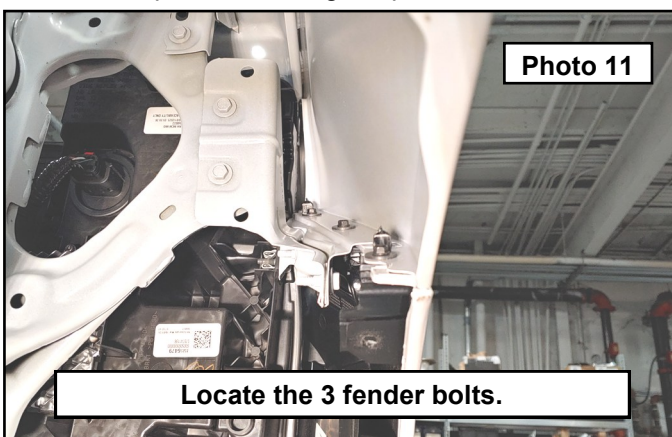
10. \*\*\*Fender flare and Mud Flap Equipped Vehicles will need to remove based upon brand.\*\*\* Remove the inner fender liner to access the hidden bumper hardware. Remove all the hardware using a T15 Torx driver. **Photo 7 / 8**



11. At the center of the liner there is a plastic rivet. Follow the same steps as before to remove. Remove the liner by pulling down at the engine bay and away from the fender. **Photo 9 / 10**

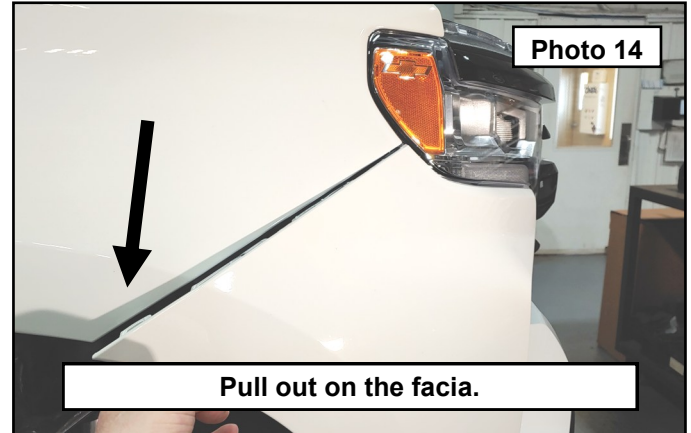
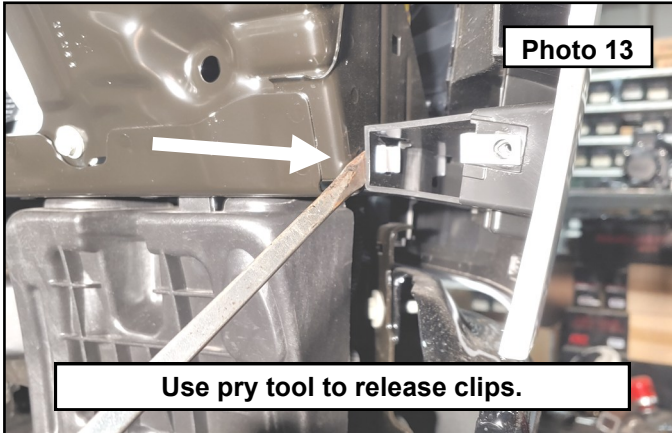


12. Look inside the fender and locate 3 bolts holding the black plastic retainer that the front fascia clips into. Loosen but do not remove the 3 bolts using a 7mm socket or wrench. This is done so that the fascia will release from the clips and keep from breaking the parts. **Photo 11 / 12**

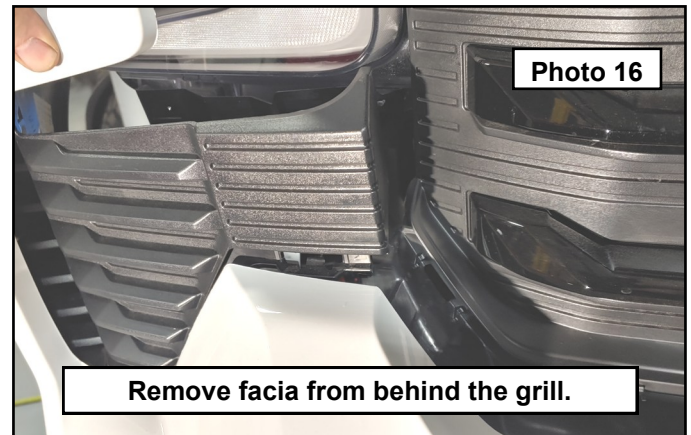
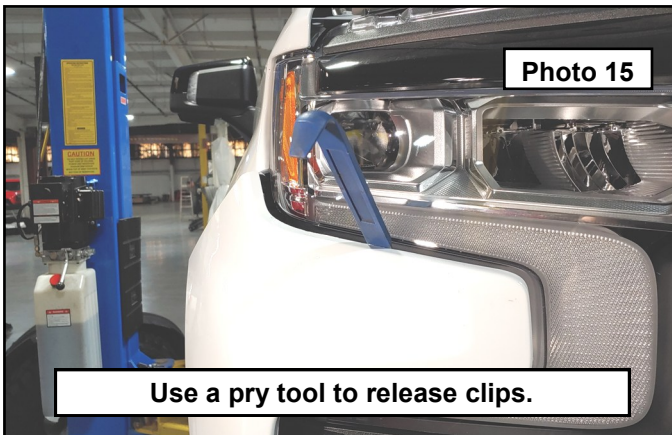




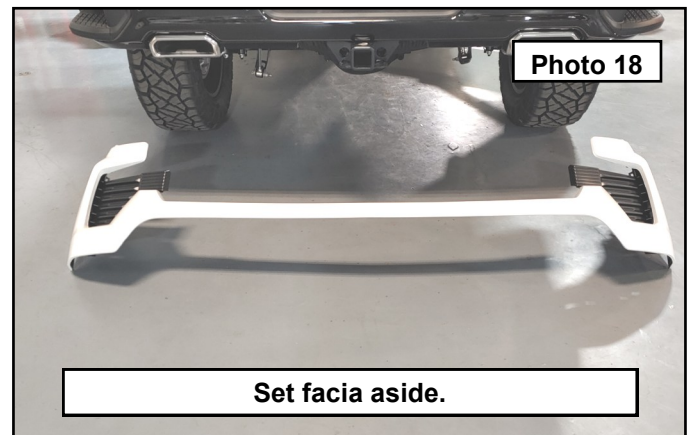
13. Locate the facia clips at the lower edge near the bumper. Use a pry tool to release the 2 clips from their mount. Repeat for both sides of the vehicle. **Photo 13**
14. Gently pull on the facia at the fender to pop it free of the clips. If it is hanging up, you may need to loosen the bolts some more. You can also use a pry tool to push the clips down to help release. You can see the clips by peaking into the crack created by pulling on the facia. **Photo 14**



15. Use a pry tool at the headlights to release the hidden clips holding the facia in place while pulling out on the edge by the fender. On some models, the lower trim sneaks behind the grill and will need to be pulled out and around. **Photo 15 / 16**

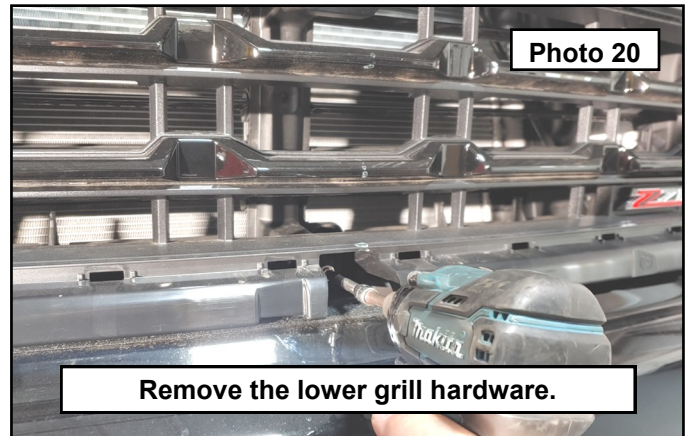


16. Once both sides are released around the fender and headlights, pull the center of the facia out and away from the grill. It is best to have an assistant hold one side as this is released from the vehicle so as to not scratch or bend the facia. Set facia aside. **Photo 17 / 18**

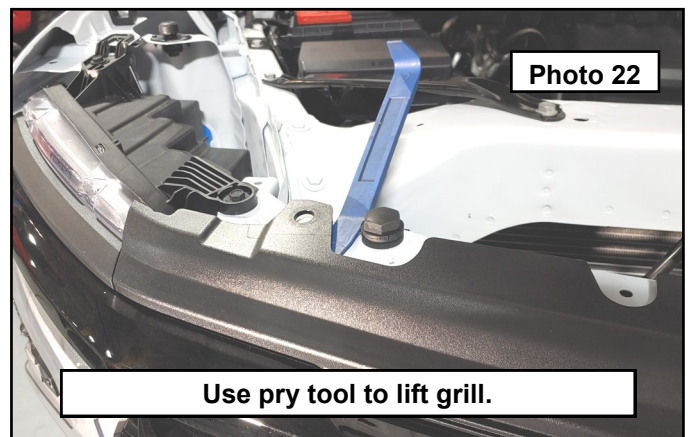




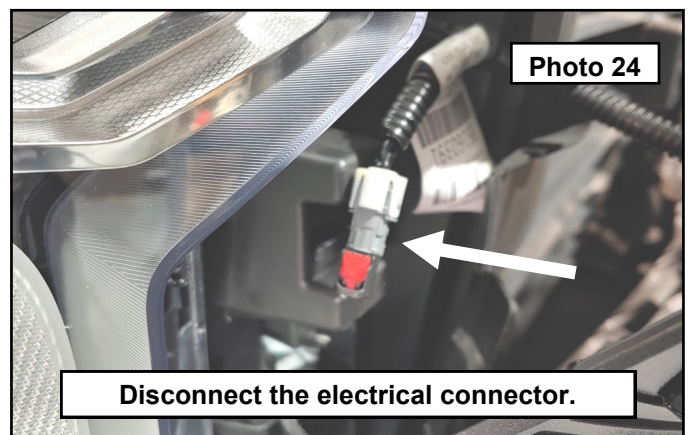
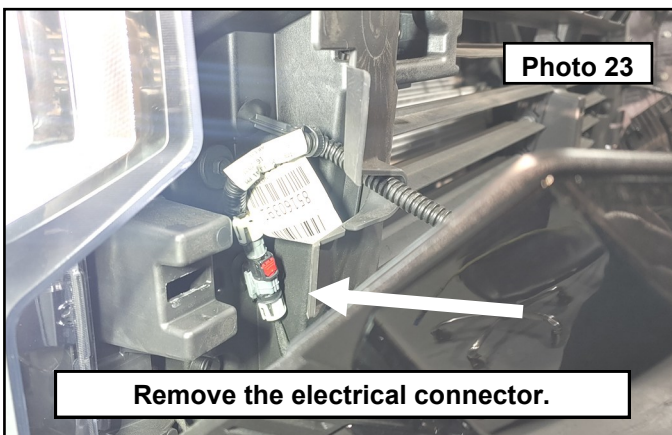
17. Remove the grill hardware using a 10mm socket. There are four bolts on top and three bolts across the bottom. The three on the bottom are recessed into the grill. **Photo 19 / 20**



18. Use a pry tool to pop the grill off the clips holding it to the headlights and to lift the grill center up off the core support at each bolt location. **Photo 21 / 22**

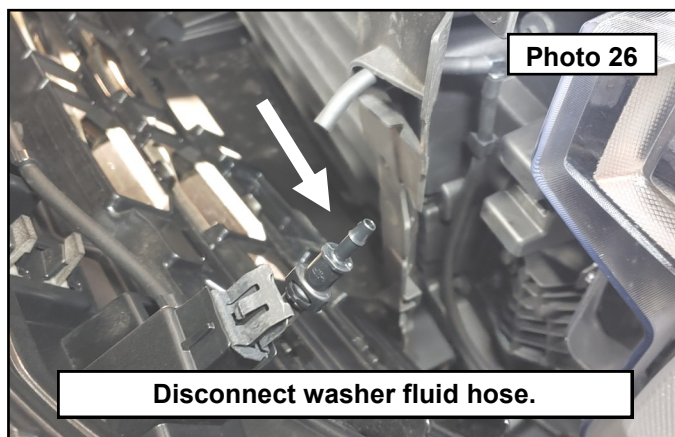
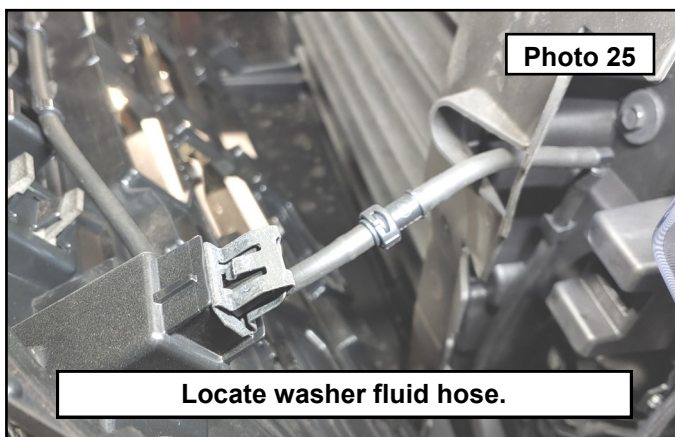


19. Pull the grill sharply away from the core support near the headlights to pop it off its clips. Once done have an assistant lean the grill out away from the core support. **\*\*\*Front Camera Equipped Vehicles\*\*\*** disconnect the electrical connector located next to the passenger headlight. **Photo 23 / 24**

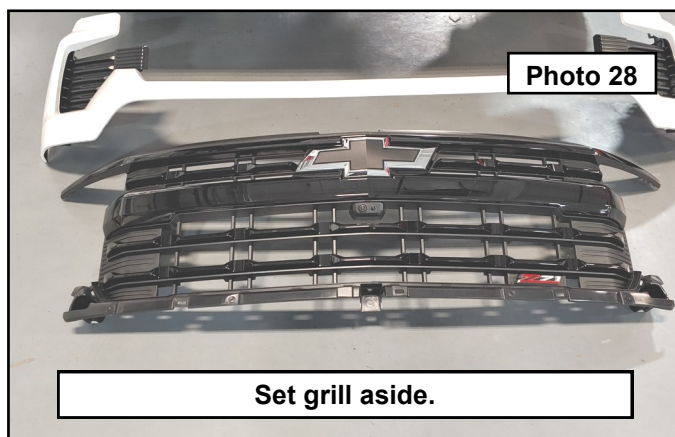
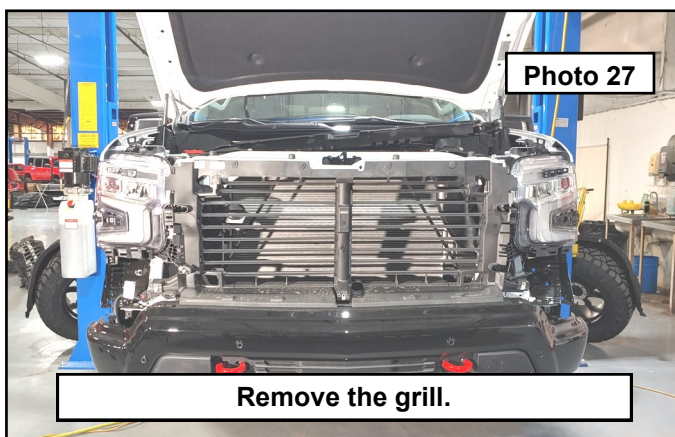




20. **\*\*\*Front Camera Equipped Vehicles\*\*\*** will also have a washer fluid line on the driver side. Pull this line off the connector. **Photo 25 / 26**



21. Remove the grill and set aside. **Photo 27 / 28**

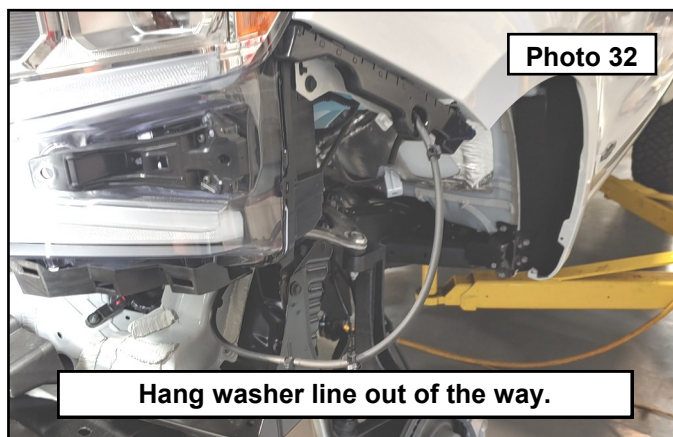
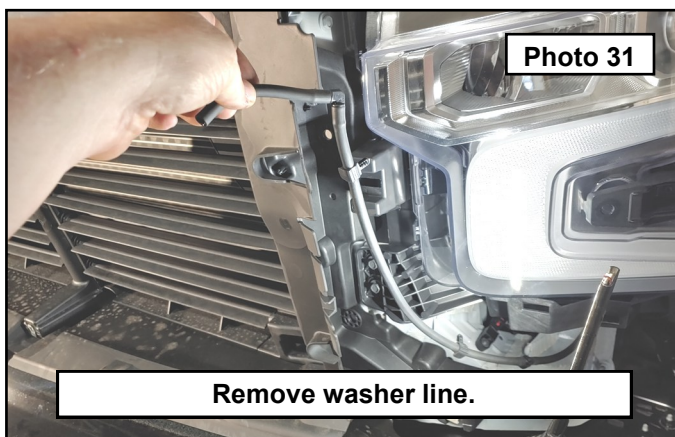


22. Remove the active air shutter from the vehicle using a 10mm socket. There are four bolts across the top, two on the each side and one in the bottom center. **Photo 29 / 30**

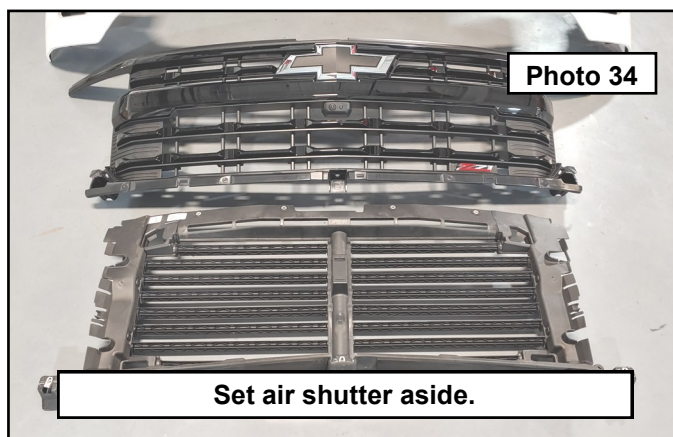
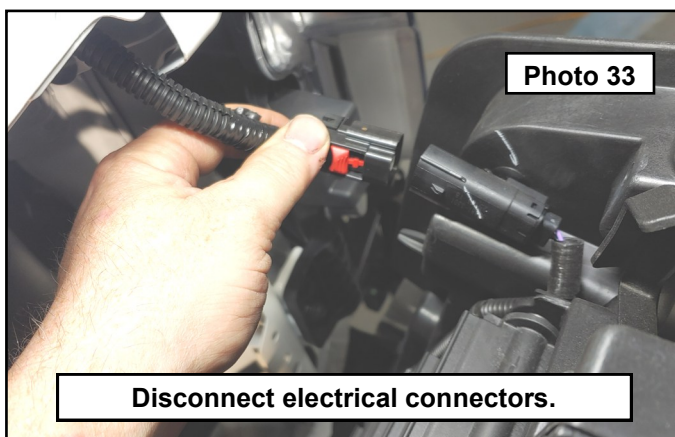




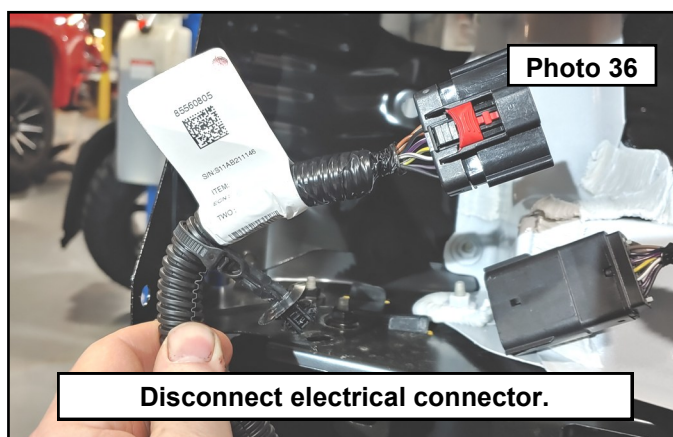
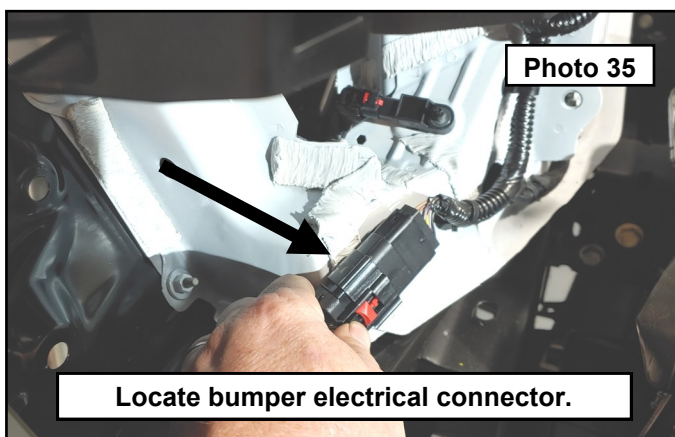
23. **\*\*\*Front Camera Equipped Vehicles\*\*\*** On the driver side, remove the washer fluid line from the active shutter using a pry tool to release the clips. Hang the washer line out of the way as shown. **Photo 31 / 32**



24. Lean the air shutter out and disconnect the electrical connector. **\*\*\*4 cylinder models\*\*\*** will have a second connector that needs to be disconnected for the lower active air shutter. Remove the active air shutter and set aside. **Photo 33 / 34**

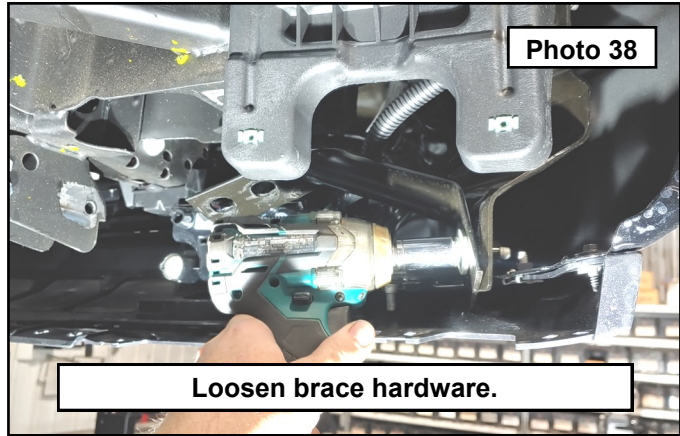
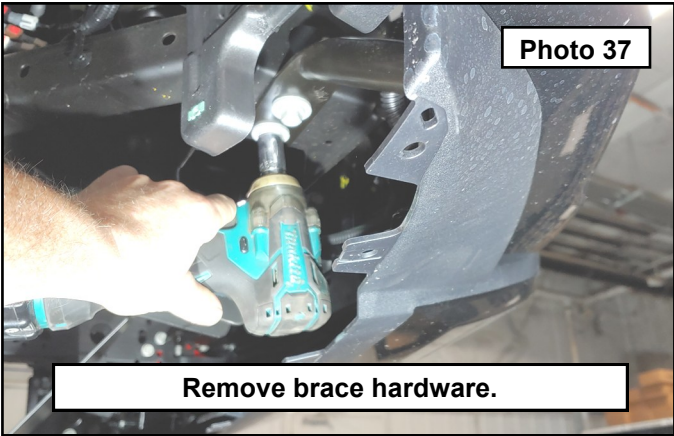


25. **\*\*\*Fog Light and Parking Sensor Equipped Vehicles\*\*\*** Locate and disconnect the electrical plug on the passenger side of the vehicle under the headlight that feeds the bumper. **Photo 35 / 36**

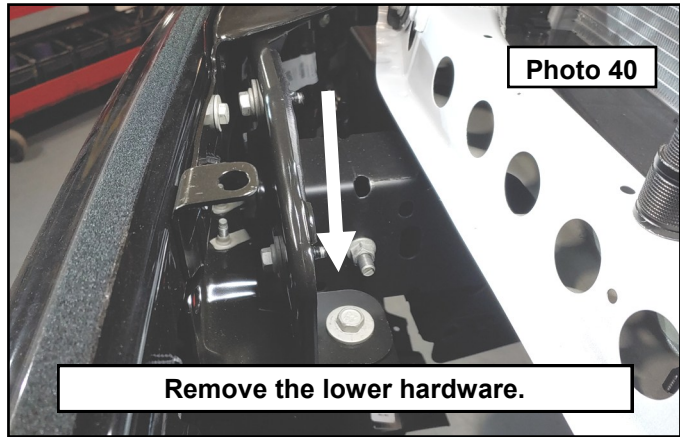




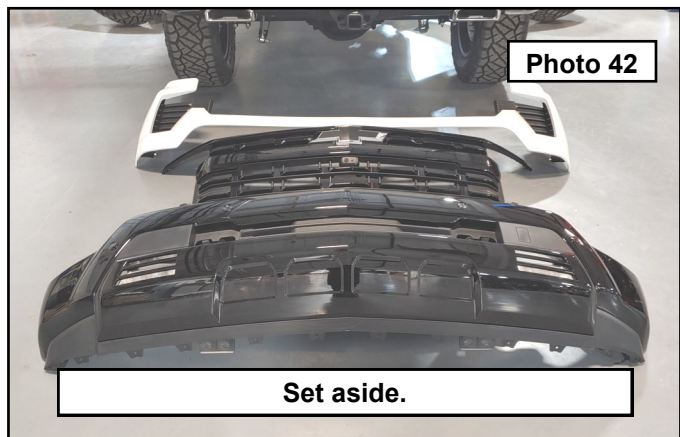
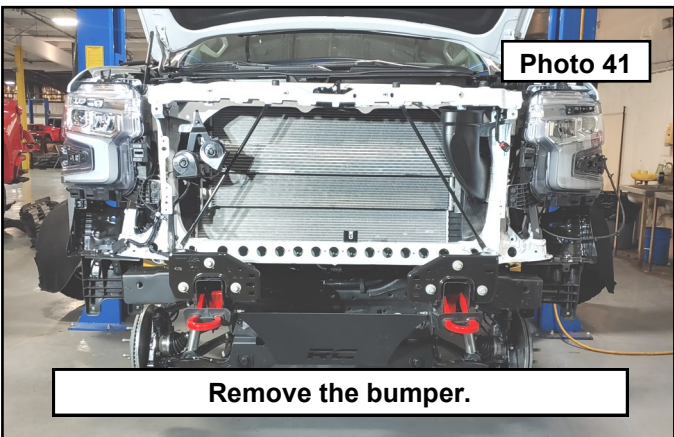
26. Under the vehicle, locate the braces that attach to the frame and bumper. Remove the brace hardware from the frame and loosen the hardware at the bumper so the brace falls out of the way using a 15mm socket. **Photo 37 / 38**



27. Move to the front of the vehicle and remove the upper and lower bumper mount hardware using an 18mm socket. **Photo 39 / 40**

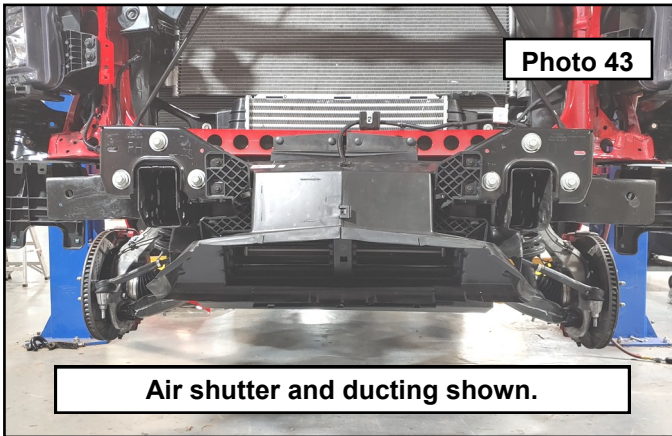


28. Remove the bumper and set out of the way. **Photo 41 / 42**

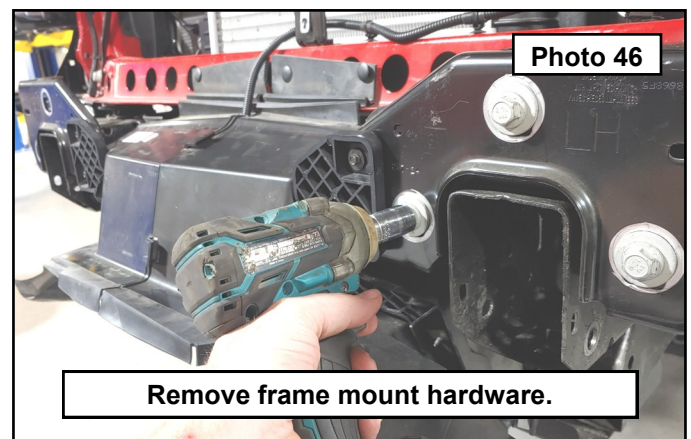
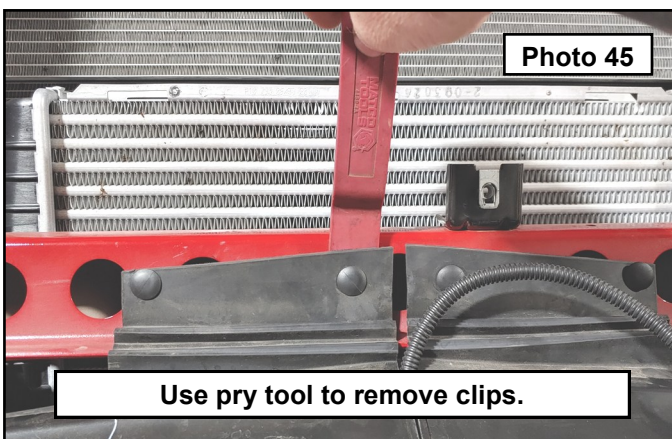




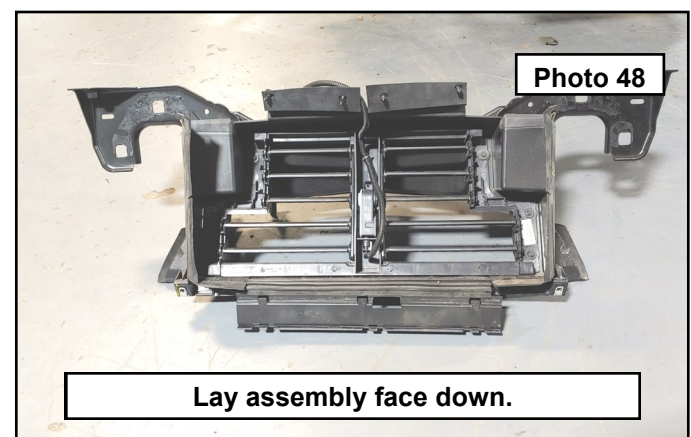
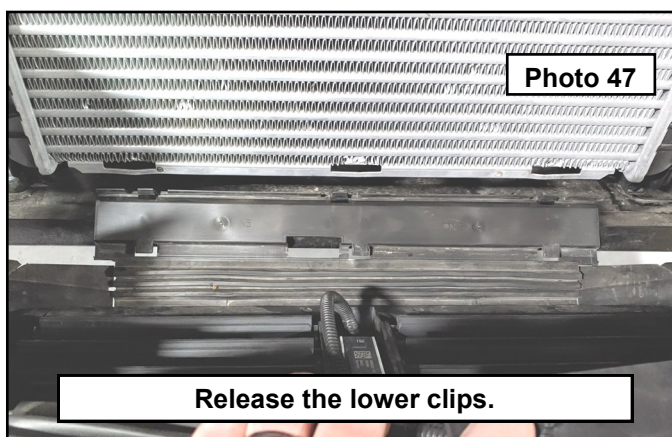
29. **\*\*\*4 Cylinder models\*\*\*** Removal of the active air shutter and ducting is necessary. Shown in-between the frame rails here. Use a pry tool to remove wire harness clips from the core support. **Photo 43 / 44**



30. Use a pry tool to remove the duct clips from the core support. **Photo 45**  
31. Remove the frame mount hardware using a 15mm socket. **Photo 46**

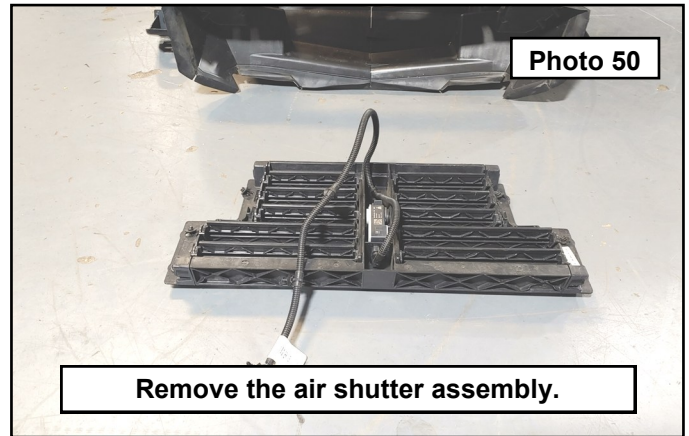
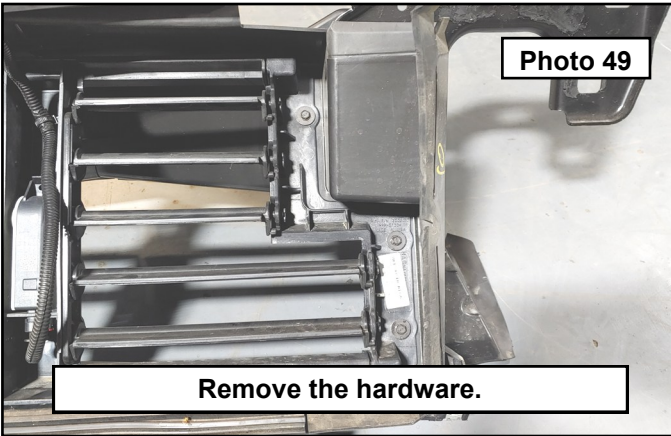


32. Lean the whole assembly forward to access the bottom air duct clips. Use a pry tool to release the clips from the intercooler. Set the assembly face down to access the air shutter system. **Photo 47 / 48**

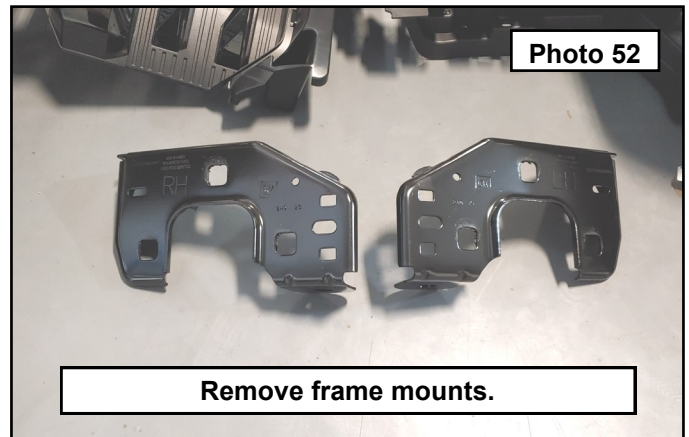
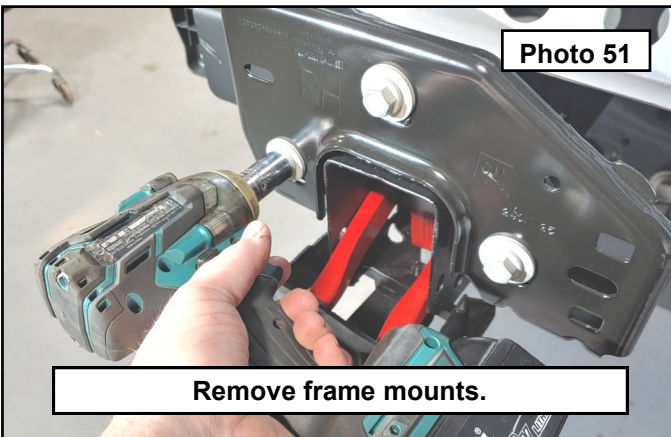




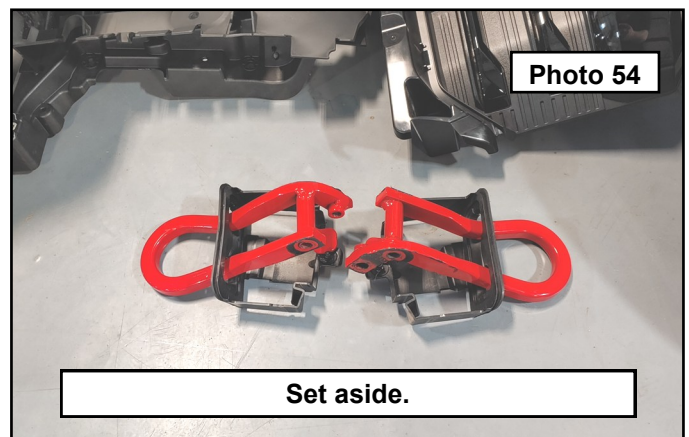
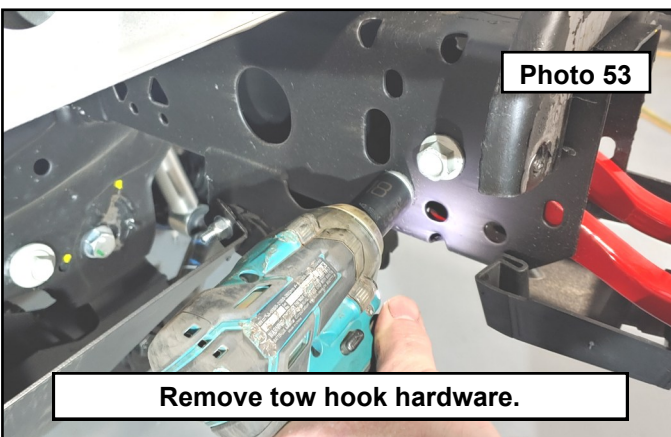
33. Remove the air shutter hardware from the ducting using a 10mm socket and remove the air shutter system. This will be reinstalled in a later step. **Photo 49 / 50**



34. **\*\*\*Non 4 Cylinder Models\*\*\*** Remove the frame mounts using a 15mm socket and set aside. **Photo 51 / 52**

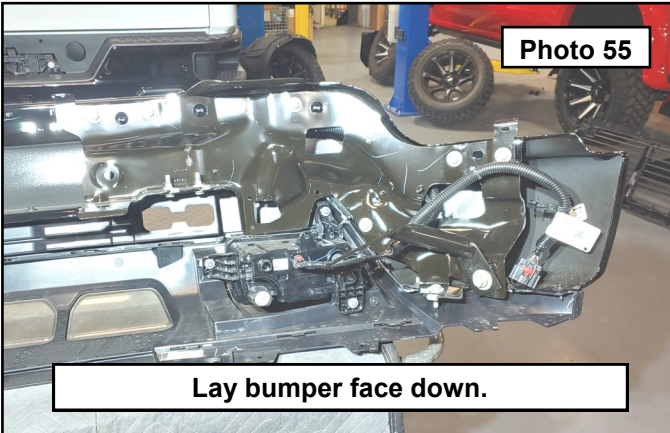


35. **\*\*\*All Models\*\*\*** Remove the tow hooks from the frame using an 18mm socket and wrench and set aside. **Photo 53 / 54**



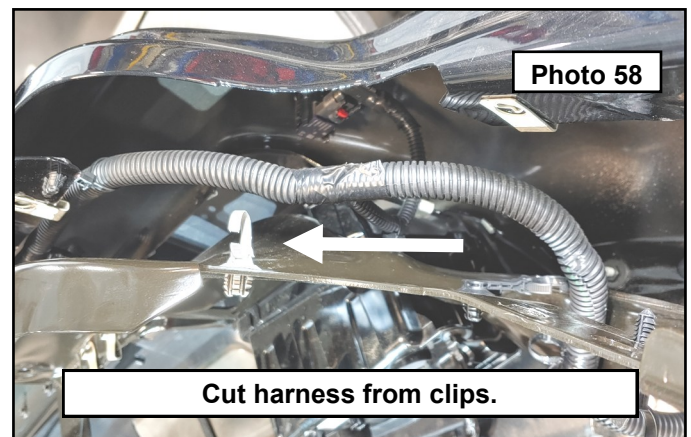
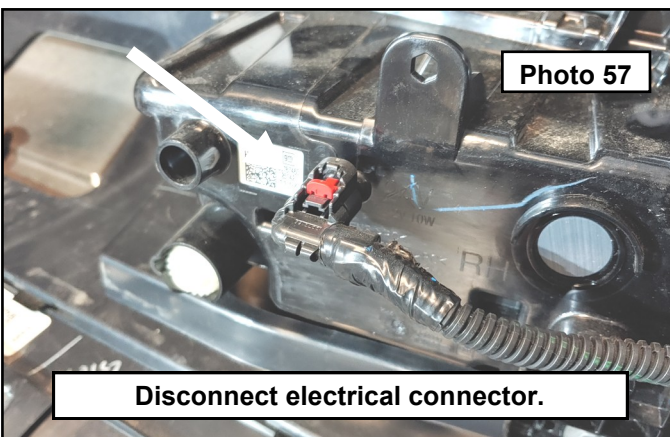


36. **\*\*\*Parking Sensor Vehicles\*\*\*** require removal of harness and sensors from the bumper. Start by laying the bumper face down on a protected surface. Remove the hardware holding the inner brackets to the bumper using a 13mm socket. **Photo 55 / 56**

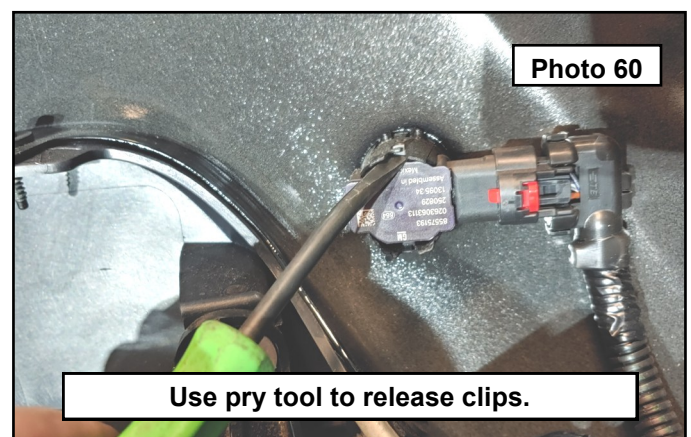
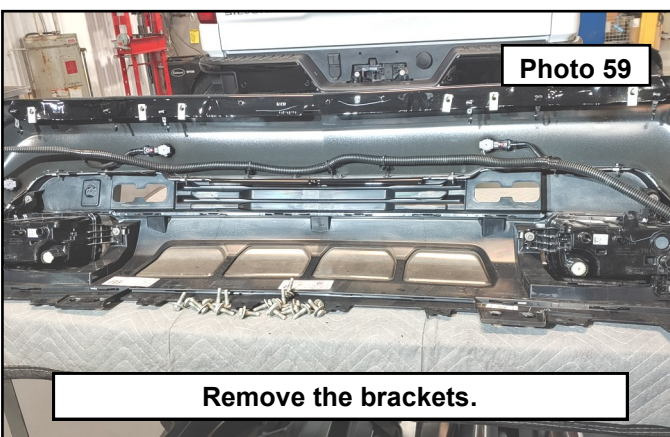


37. Disconnect the fog light electrical connector. **Photo 57**

38. Follow the harness around the bumper and bracket and cut it loose from all of the clips holding it in place. **Photo 58**



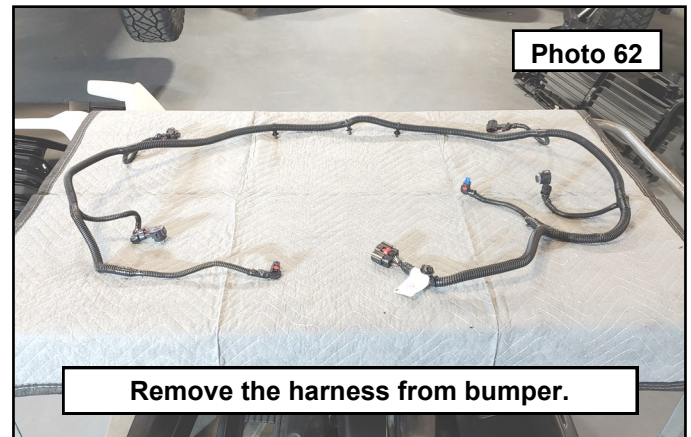
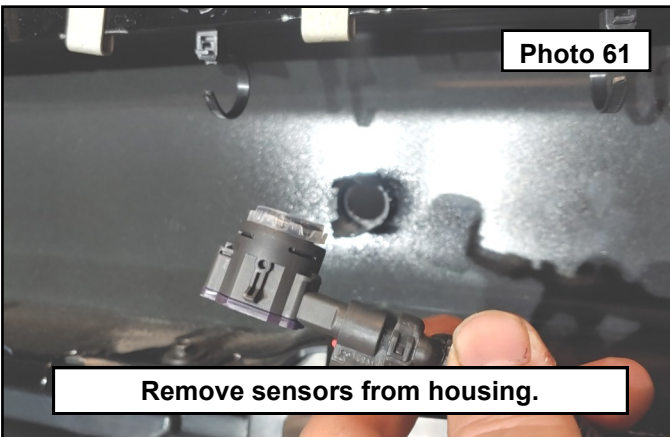
39. Remove the brackets and set aside. You will now have access to the parking sensors. Use a pry tool to release the clips from the sensors and pull out of their housings. **Photo 59 / 60**





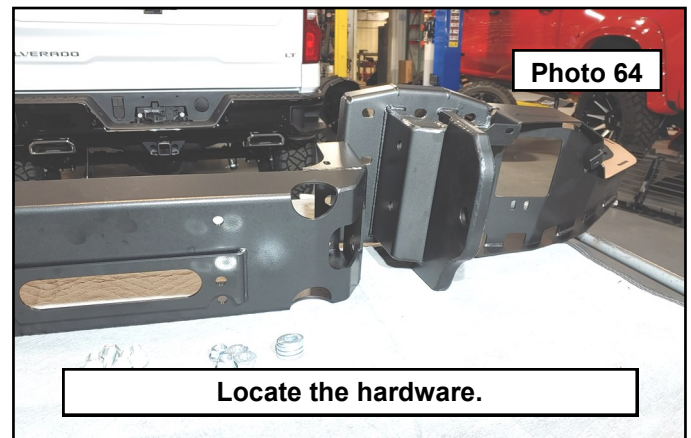
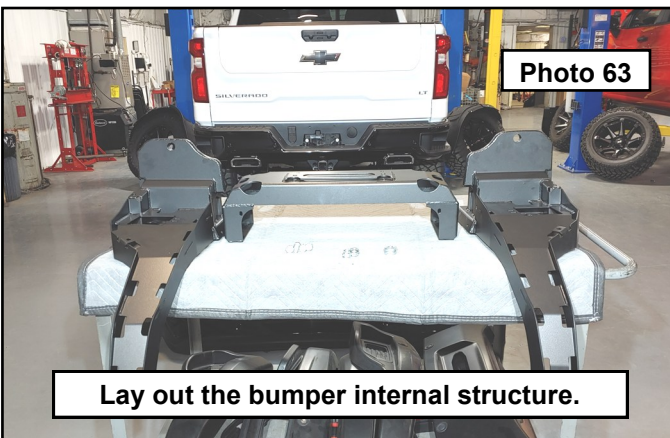
40. Remove sensors from housings. Repeat this process for all the sensors. **Photo 61**

41. Remove the harness from the bumper. Make sure to cut all clips off the harness before setting aside. **Photo 62**

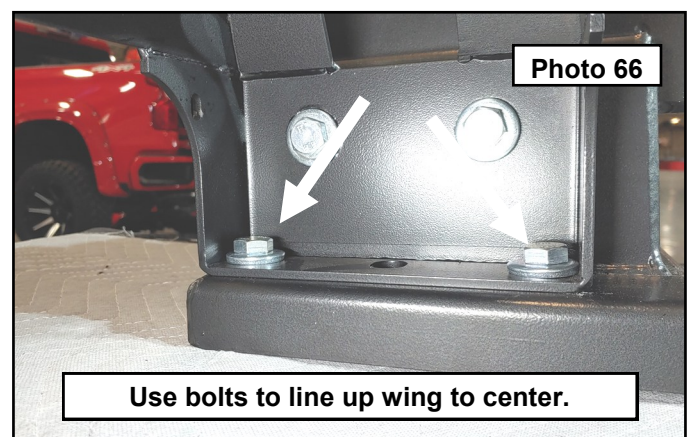
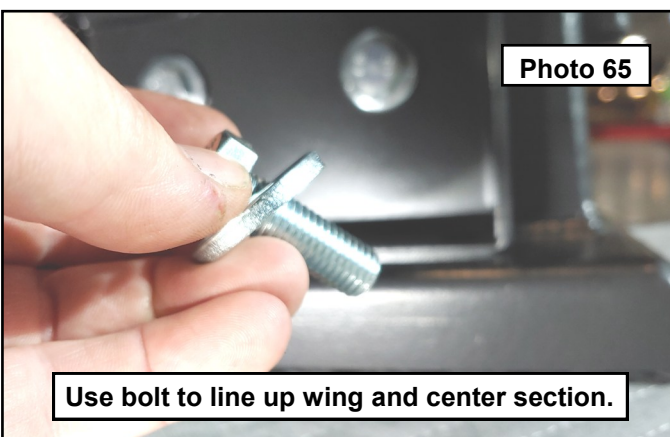


42. **\*\*\*All Vehicles\*\*\*** Start by laying out the new bumper internal structure. Locate provided 12mm bolts, washers and flange nuts. **Photo 63**

43. The winch tray / center section of the bumper is offset so the fairlead is on the low side. The driver wing is shown in the photo. The hole in the back of the frame mounts allow access to install the hardware. **Photo 64**



44. Install the center section of the bumper to the wings using the provided 12mm x 35mm bolts, washers, and flange nuts. Install the bolts with the heads to the inside of the bumper and the nuts on the wing side. Use bolts and washers to line up the holes on the center section and the wing while snugging down the two bolts going in on the sides. Final torque will be done with bumper installed to frame. Remove the bolts used to line up the parts for installation later. **Photo 65 / 66**

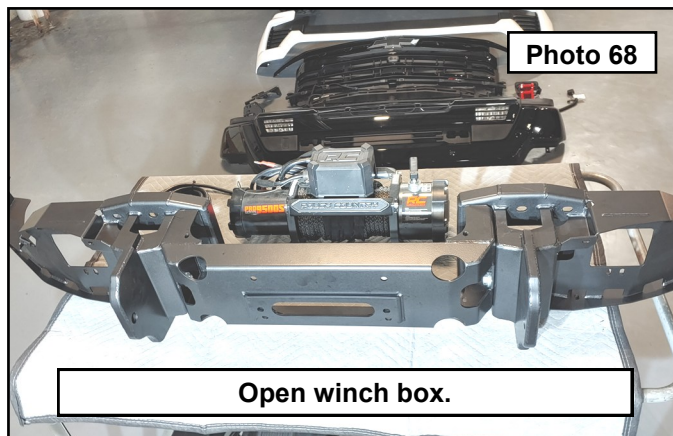




45. Repeat the process for both wings and then stand the bumper as shown. **Photo 67**
46. **\*\*\*NON Winch Optional Kits Skip All Winch Related Steps\*\*\***
47. **\*\*\*Winch Optional Kits Follow Winch Install Steps\*\*\*** Open the winch kit and set onto the workspace. **Photo 68**

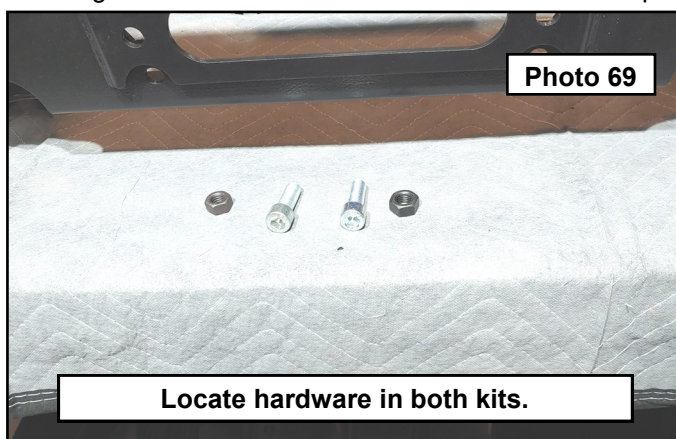


Install both wings.

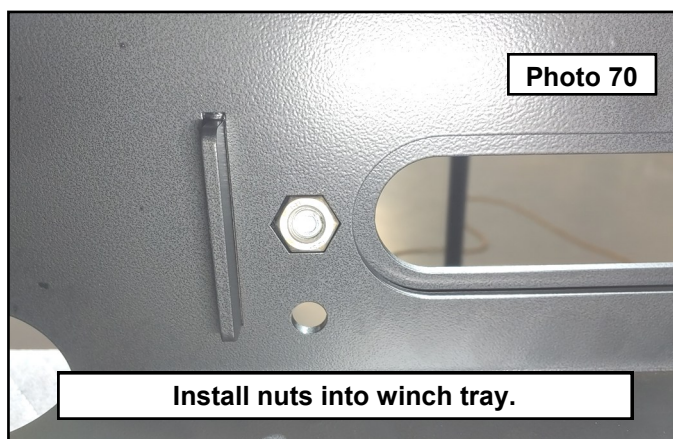


Open winch box.

48. Locate the 12mm nuts from the winch hardware bag and 12mm socket head bolts from the bumper kit hardware bag. Install the nuts into the back side of the bumper winch / center section. **Photo 69 / 70**

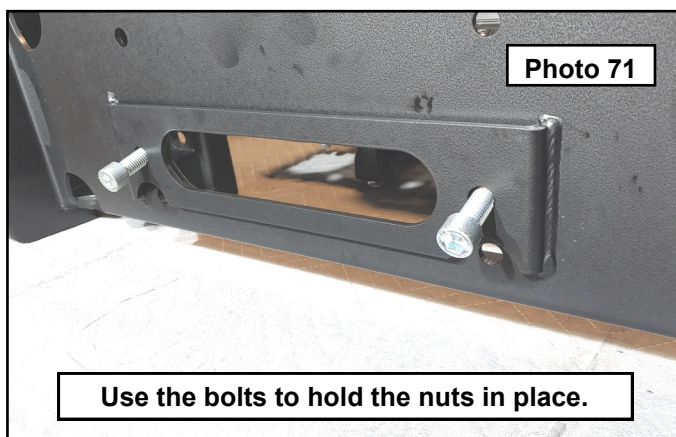


Locate hardware in both kits.

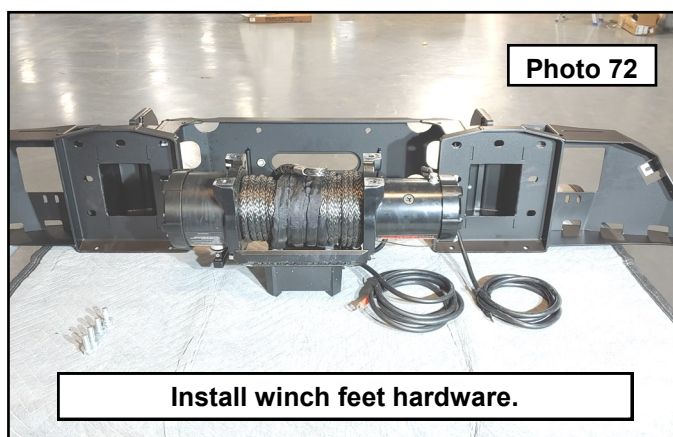


Install nuts into winch tray.

49. Use the socket head bolts to thread into the nuts just enough to hold them in place. Once the winch is installed, the feet of the winch will hold the nuts in place and you will remove the bolts. **Photo 71**
50. Install the positive and negative battery cables to the winch. Install the square nuts from the winch kit into the winch feet. **Photo 72**



Use the bolts to hold the nuts in place.

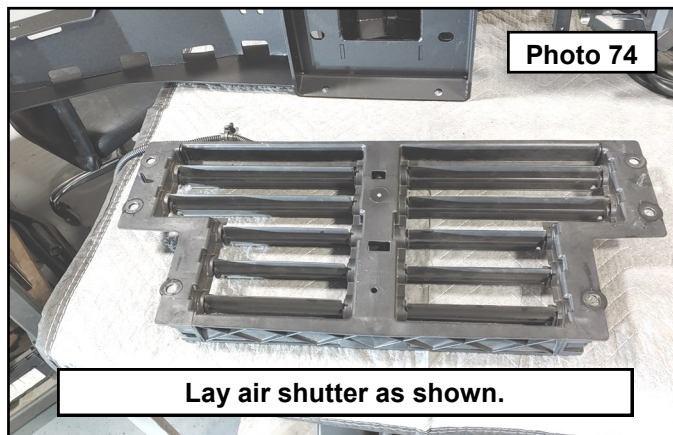
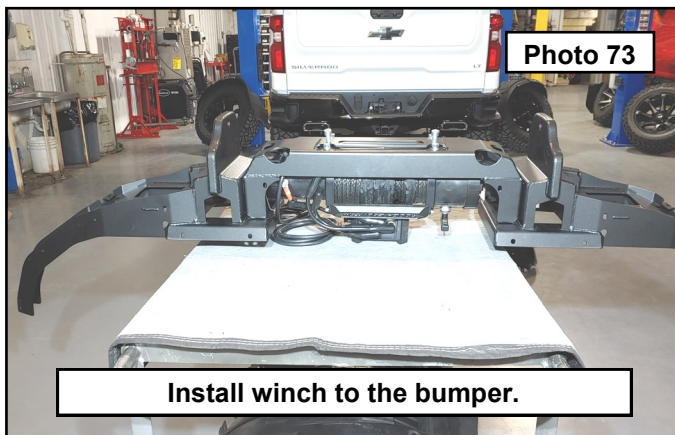


Install winch feet hardware.



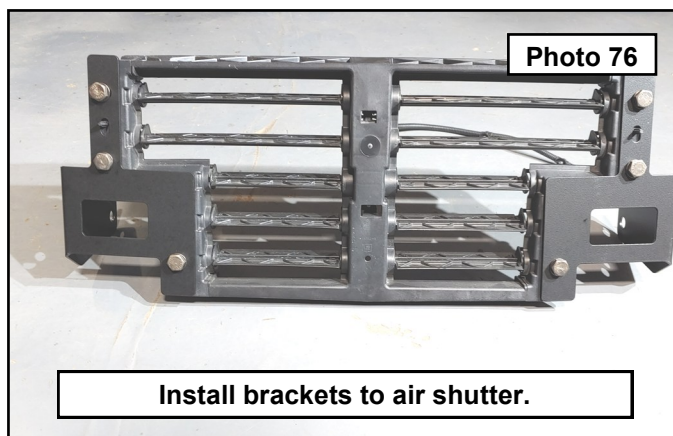
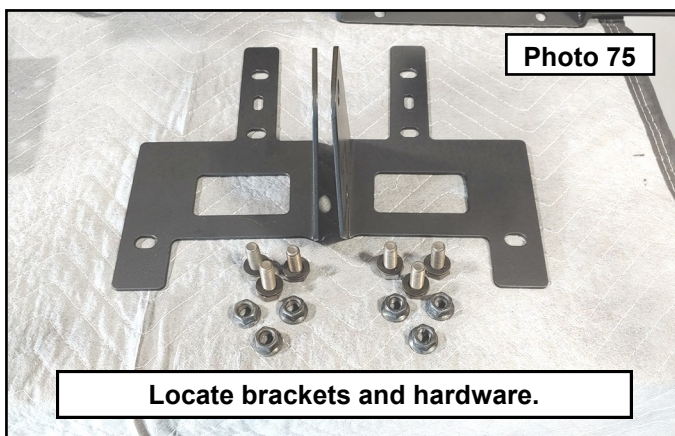
51. Install the winch into the bumper structure with the 10mm bolts, lock washers, and flat washers from the winch hardware bag and torque the hardware to 35 ft/lbs. **Photo 73**

52. **\*\*\*4 Cylinder models\*\*\*** Lay the active air shutter as shown. **Photo 74**



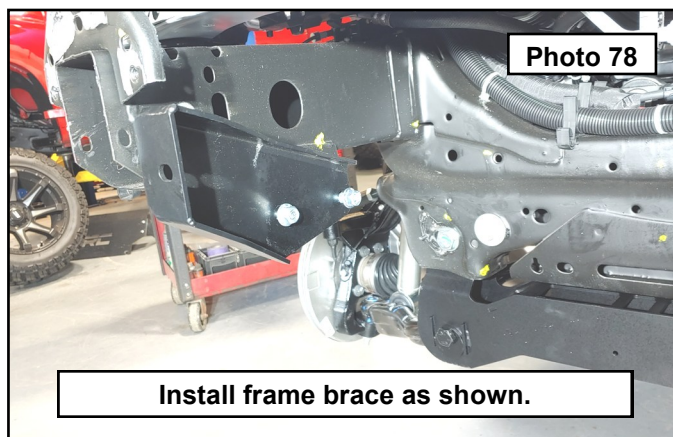
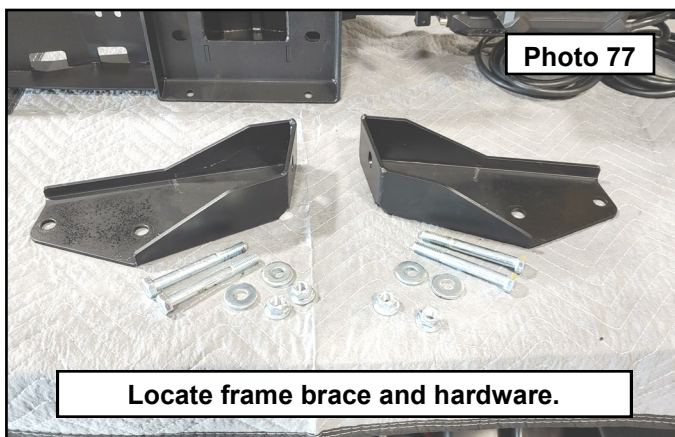
53. Locate the air shutter brackets and 10mm bolts, washers, and flange nuts. **Photo 75**

54. Install the brackets to the shutter as shown. Hand tighten hardware. **Photo 76**



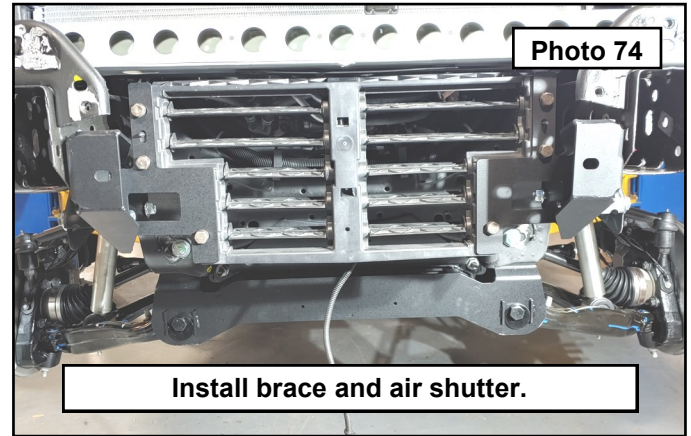
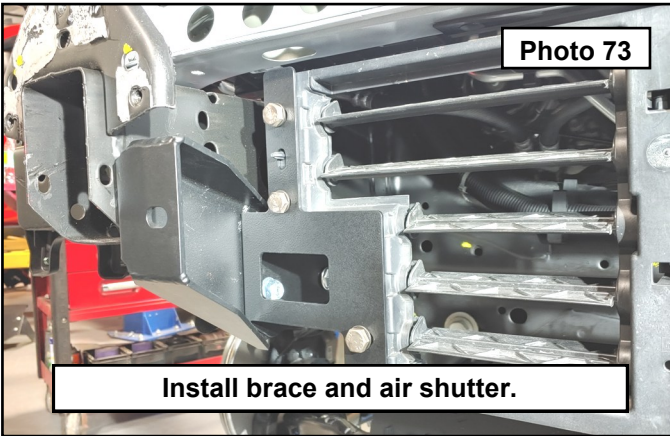
55. Locate the driver and passenger frame brace and 12mm x100mm bolts, washers and flange nuts. **Photo 77**

56. Install the frame brace as shown. Leave loose at this time. **Photo 78**

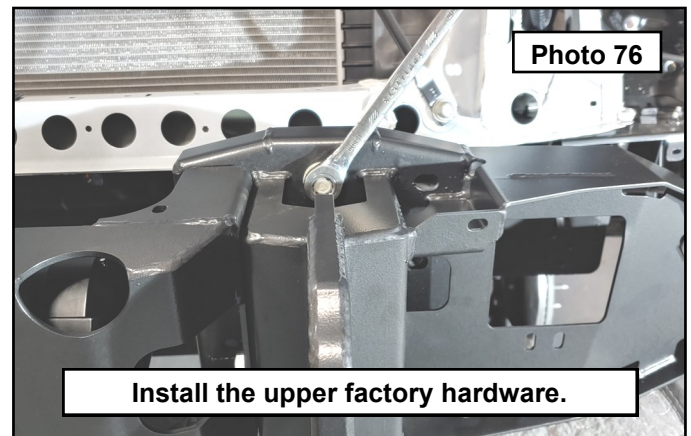
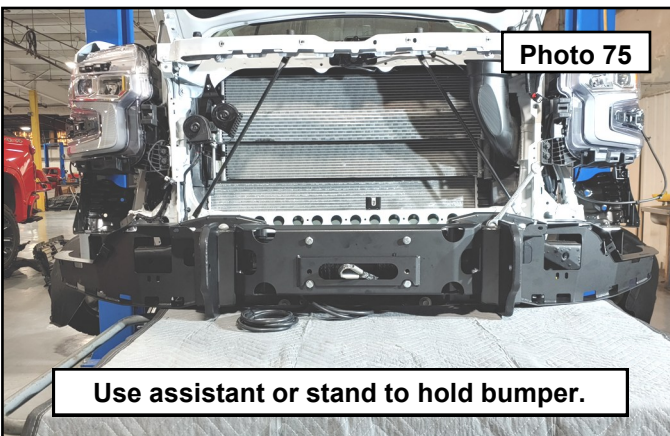




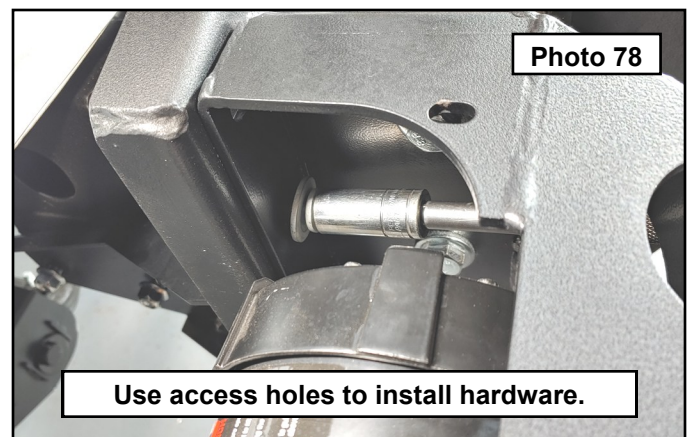
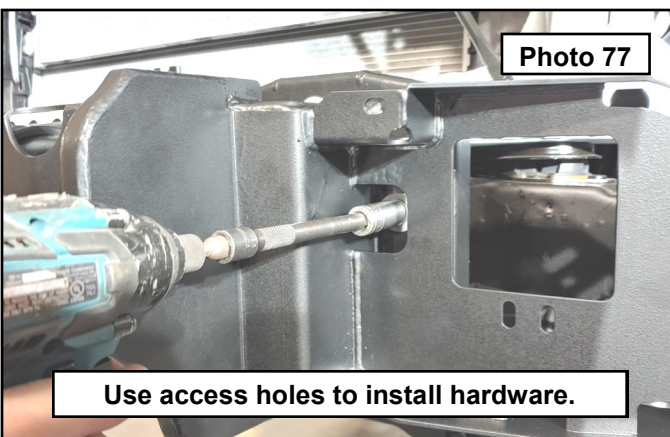
57. **\*\*\*4 Cylinder models\*\*\*** Install frame brace and air shutter brackets at the same time. This is easier done with an assistant. Leave hardware loose at this time. **Photo 73 / 74**



58. Prepare to install the bumper to the frame rails. Locate the previously removed frame plate hardware. Use an assistant, jack, or a stand to hold the bumper up to the frame rails and start the upper most bolts on each frame rail. **Photo 75 / 76**

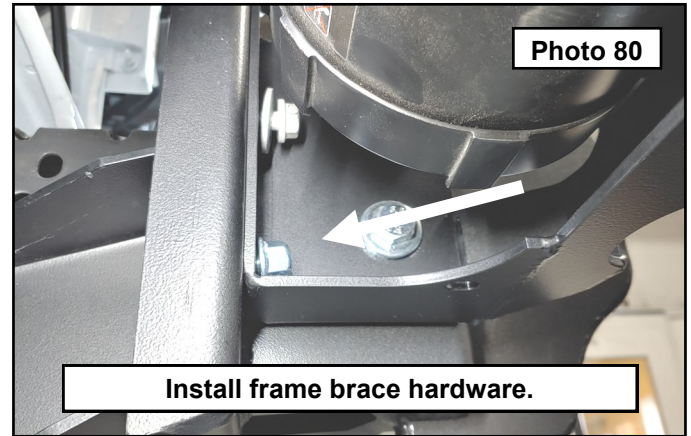
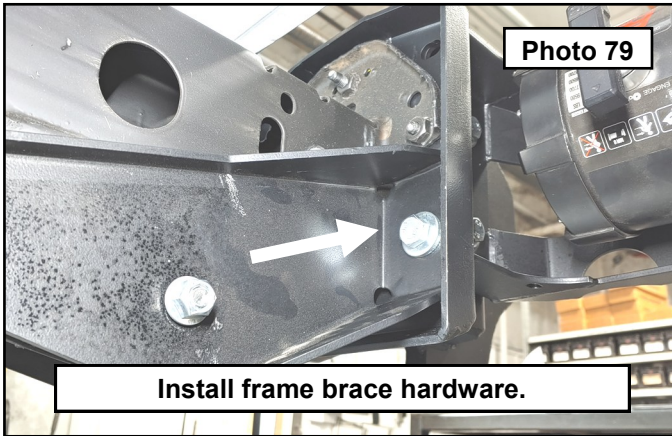


59. Use the access holes provided in the structure to start the remaining factory hardware. Do not fully tighten at this time but snug enough to hold the bumper in place to remove the stand, jack, or let the assistant take a break. **Photo 77 / 78**

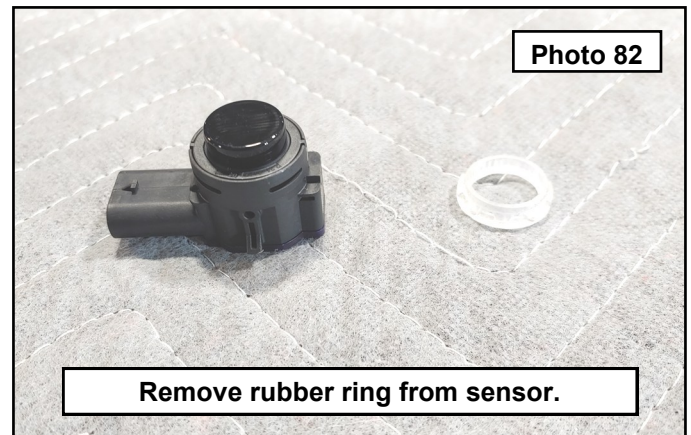
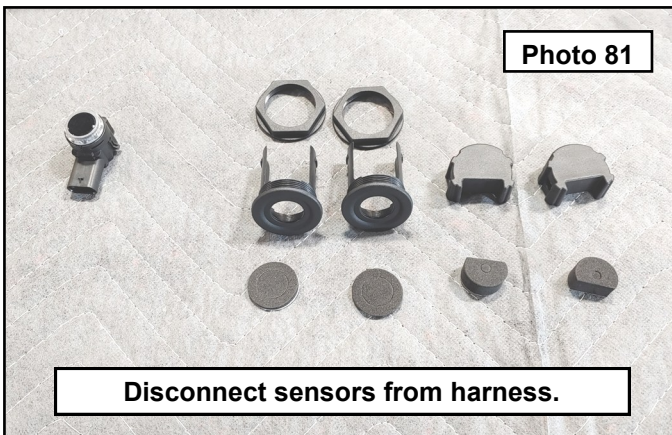




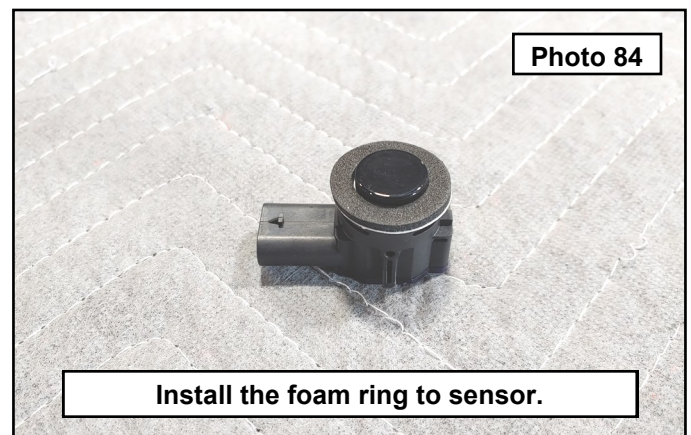
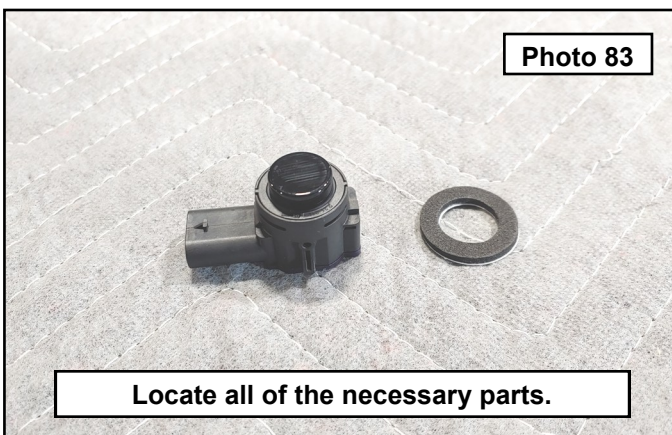
60. Install the frame brace to the bumper using the provided 12mm x 35mm bolts, washers, and flange nuts. With all the hardware installed, center the bumper structure side to side in the frame. Torque all hardware to 45 ft-lbs. **Photo 79 / 80**



61. **\*\*\*Parking Sensor Vehicles\*\*\*** Disconnect all the sensors from the harness. Locate the sensor installation kit from the bumper hardware box. Lay out the pieces shown. The kit is a universal kit designed for multiple sensor types and you will only need the parts shown. These include the housing, locking nut, round foam pad, large foam backer, and main clip. **Photo 81**
62. Remove the rubber ring from the end of the sensor. **Photo 82**

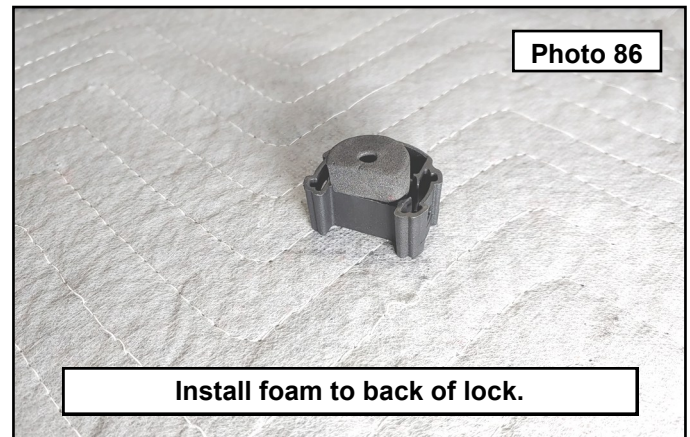
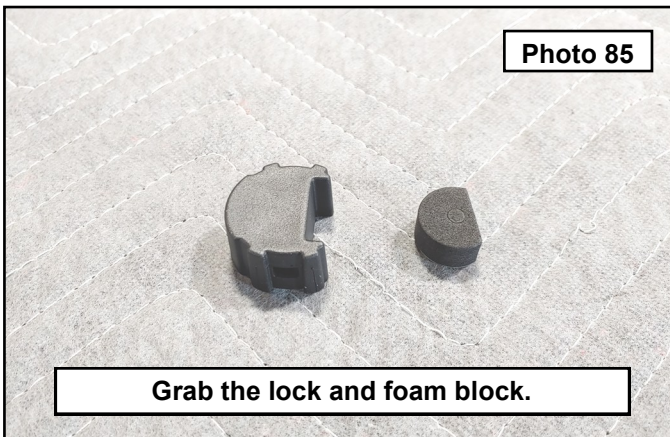


63. Remove the outer foam ring. Remove protective backing from foam ring to expose the sticky side. **Photo 83**
64. Replace rubber ring with provided foam ring making sure to stick it flat to the bottom ledge of the sensor. **Photo 84**

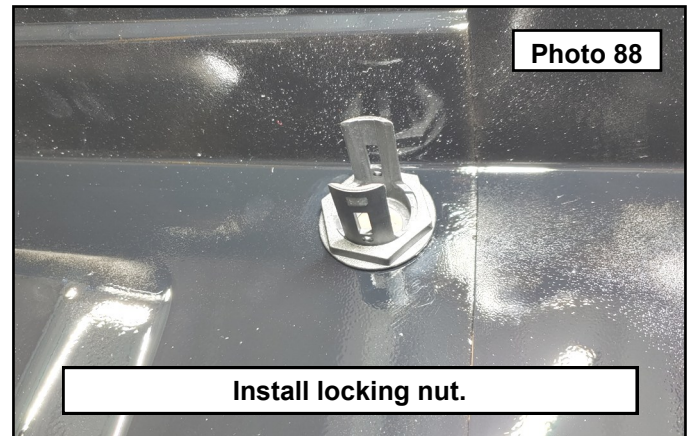
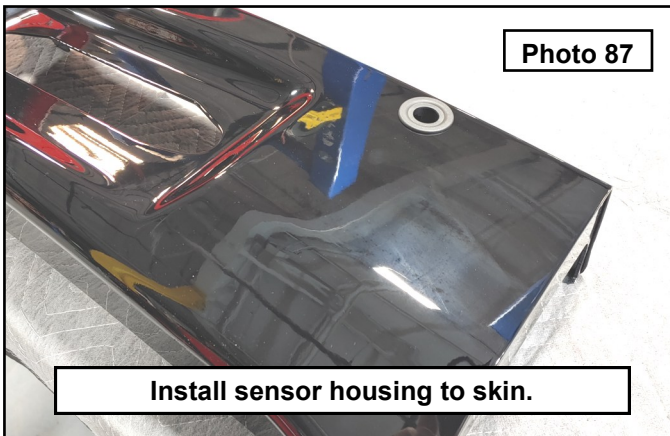




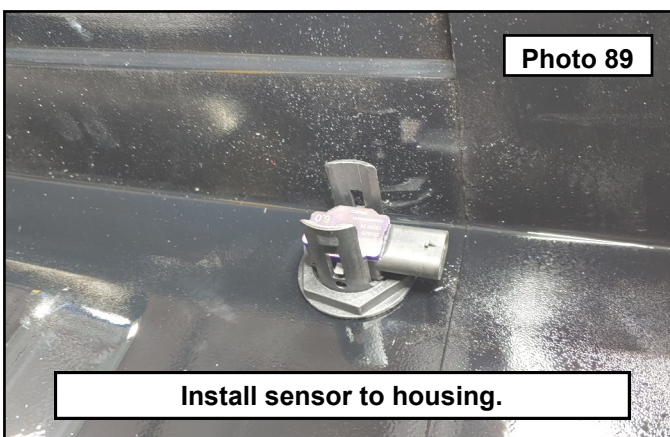
65. Prepare the lock. Remove the backing from the foam block, flip the lock upside down and stick the foam to the block while using the flat edge and pin to locate the foam. **Photo 85 / 86**



66. **\*\*\*All Models\*\*\*** Prepare the center skin of the bumper. Install the sensor housing into the skin noting the small locating notches. Install the locking nut on the back side of the skin. Tighten by hand. **\*\*\*Non parking sensor vehicles\*\*\*** Install block off caps into face of the sensor housing. **Photo 87 / 88**

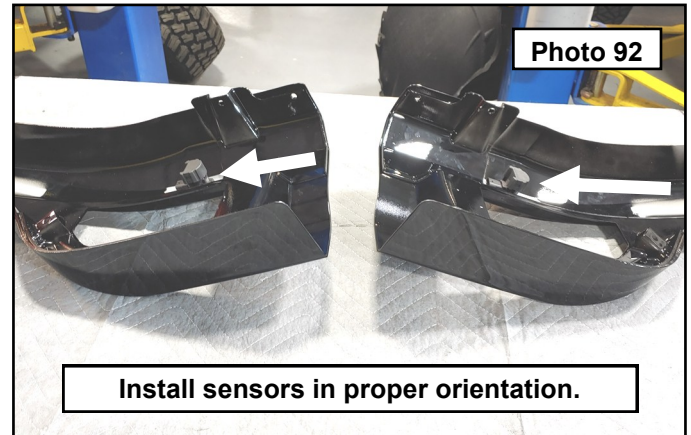
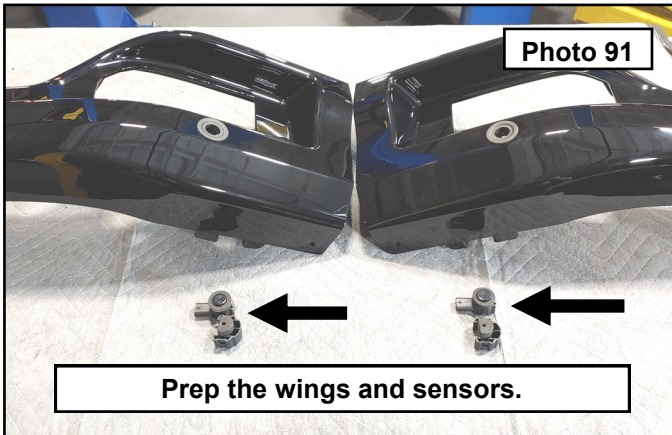


67. **\*\*\*Parking sensor models\*\*\*** Install the parking sensor into the housing with the electrical connectors pointing to the **OUTSIDE** of the bumper skin. It is very important to orientate the sensors as shown for proper operation and harness connections. Press the sensor into place making sure the locks engage on both sides of the housing. **Photo 89**
68. With the sensor in place, install the lock to the housing. Press into place until the locks engage. This means compressing the foam backer. **MAKE SURE YOU HAVE THE SENSORS LOCATED CORRECTLY BEFORE ENGAGING LOCK.** Once in place, these locks will not be able to be removed without damaging the parts. **Photo 90**

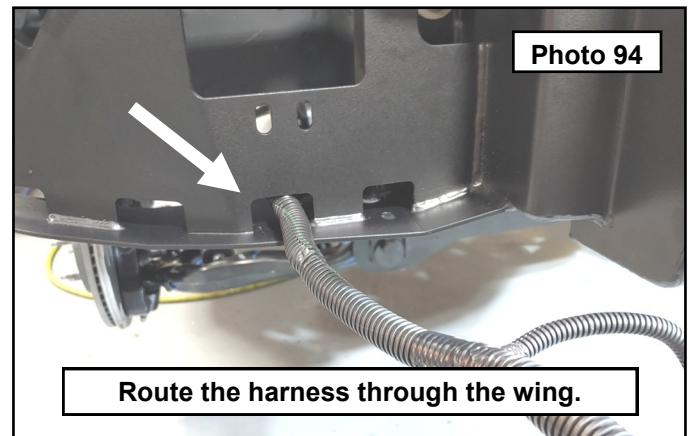
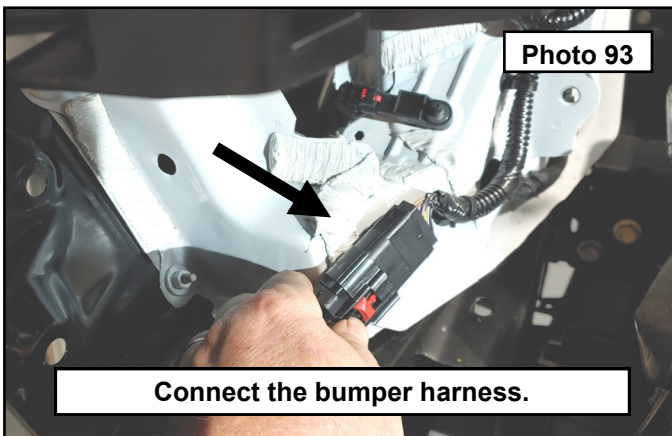




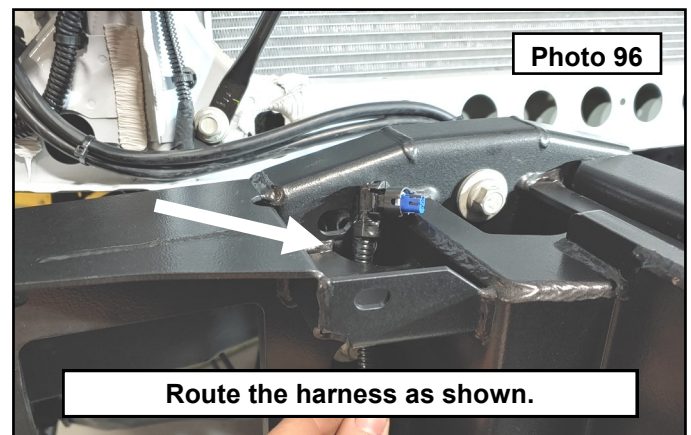
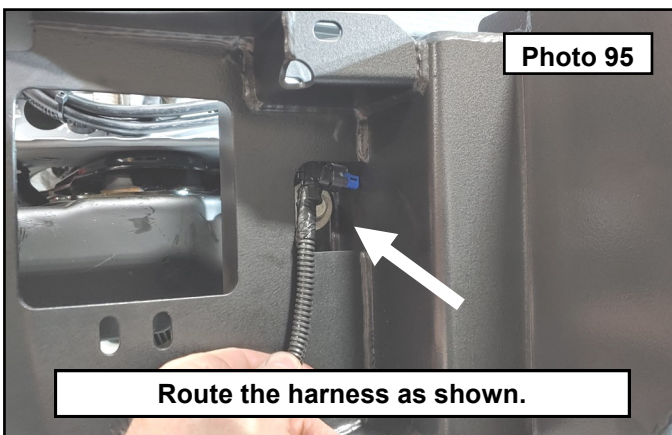
69. Prepare the wing skins of the bumper in the same manor as the center section by installing the sensor housings and locking rings. Notice how the sensors (and arrows) are laid out in the photo. This is the direction of installation into the housings. Again, this is very important for operation and harness installation later. **Photo 91**
70. Lay the wings as shown and install the sensors as shown. Notice both sensors face the same direction on the wings. The **Passenger side** will point to the outside of the bumper while the **Driver side** will point to the center of the bumper. **Photo 92**



71. Connect the bumper harness at the passenger side. Pass the long end of the harness through the hole shown in the passenger wing until you reach the fog light connector. **Photo 93 / 94**

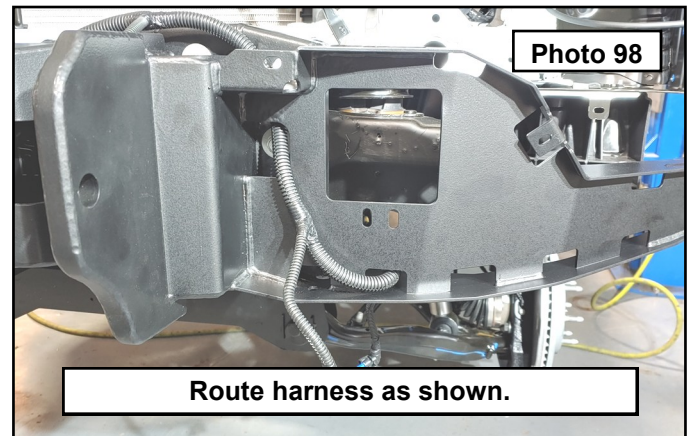
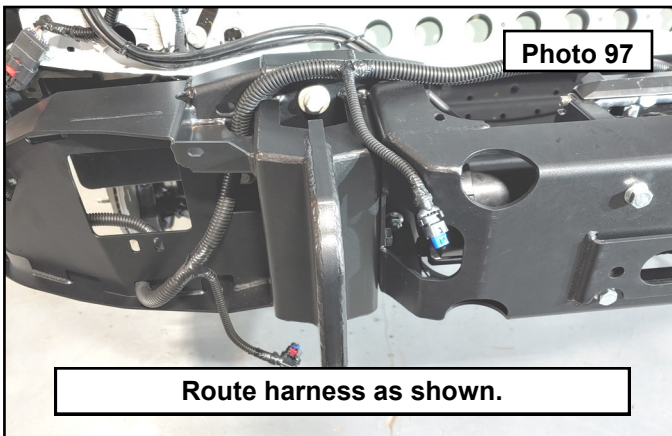


72. Route the harness up through the hole in the frame mount of the new bumper structure as shown. **Photo 95 / 96**

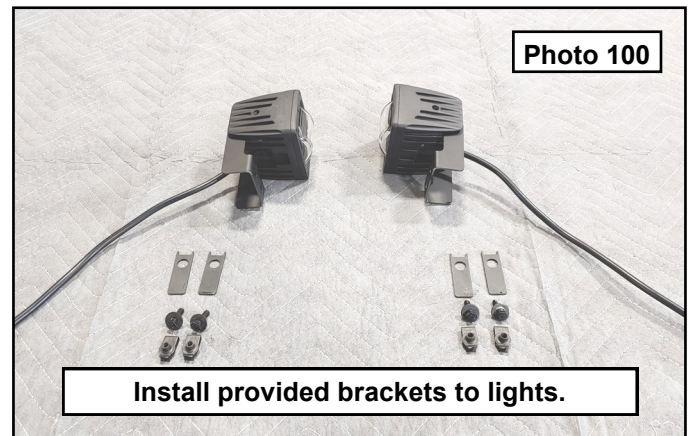
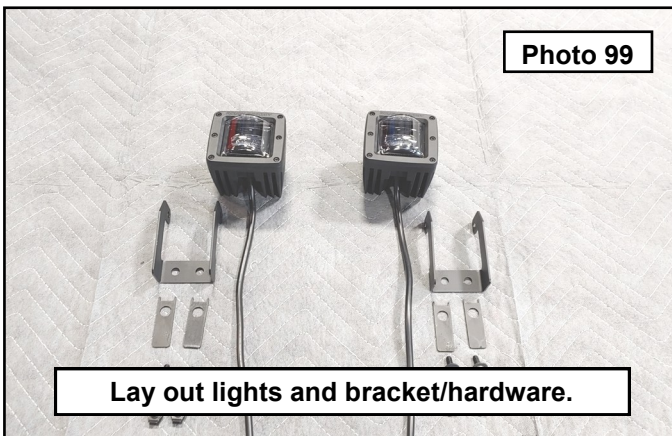




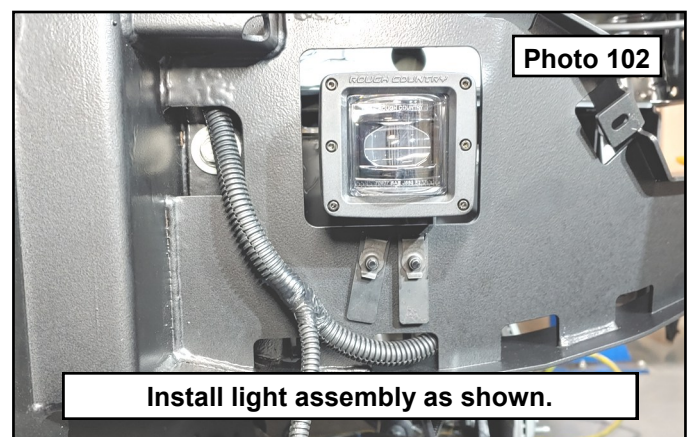
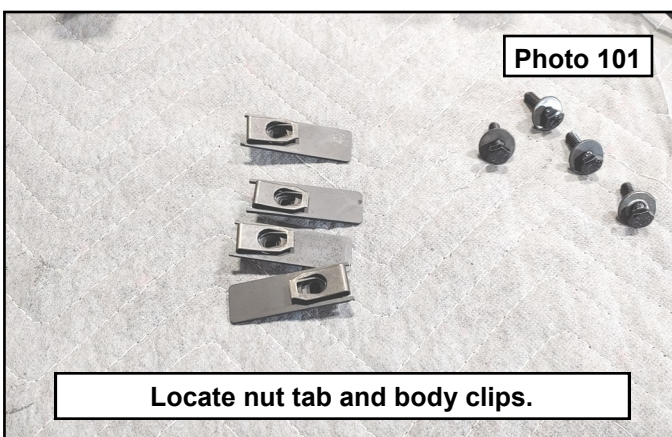
73. Route the harness over the top of the frame mount and over to the driver side. The parking sensor connector will lay as shown. **Photo 97**
74. Route the remaining end of the harness down through the driver side wing in similar fashion to the passenger side. There will be an extra bit of harness to deal later in the center of the bumper after the skin is installed. **Photo 98**



75. Locate the fog light mounts, nut tabs, 6mm clip nuts and 6mm bolts and washers. If the lights have their mounts installed, remove them now and replace with the provided mounting brackets as shown. If the lights do not have mounts installed, install the provided mounts using the hardware from the light kit. **Photo 99 / 100**

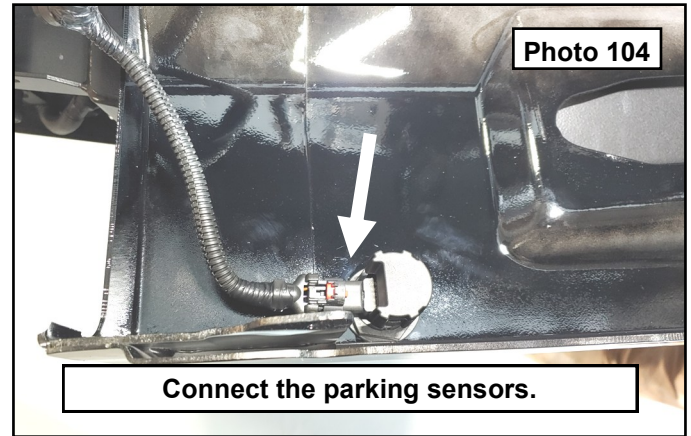
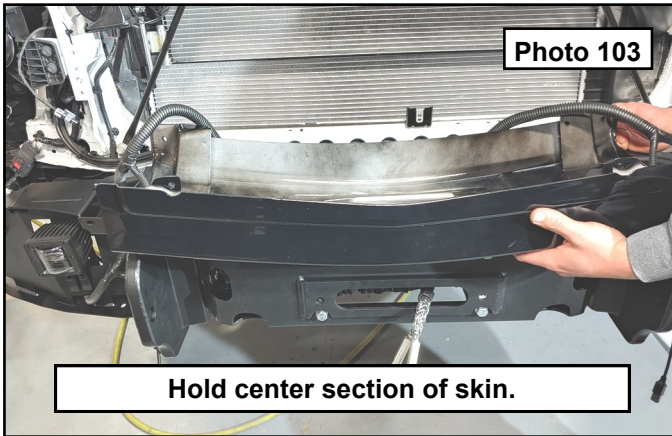


76. Install the 6mm body clip nuts to the nut tabs by pressing into place until they click and are centered with the through hole in the bracket. Install the lights to the backside of the wings using the 6mm bolts, washers and assembled nut tabs on the front side of the wing. Leave loose at this time. **Photo 101 / 102**

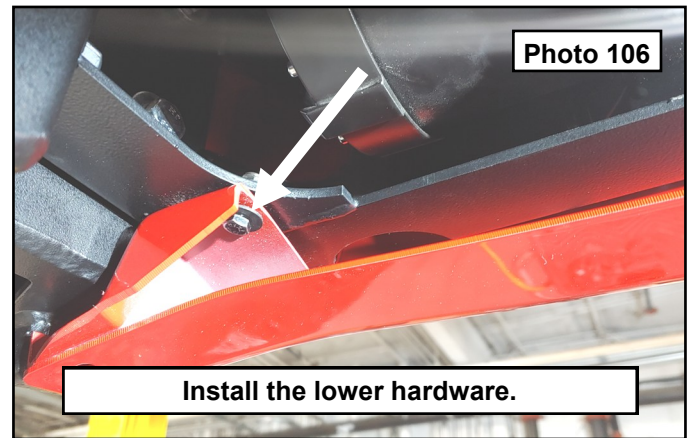
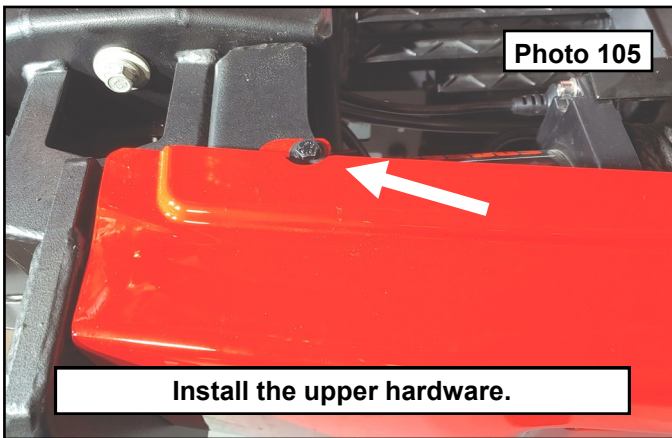




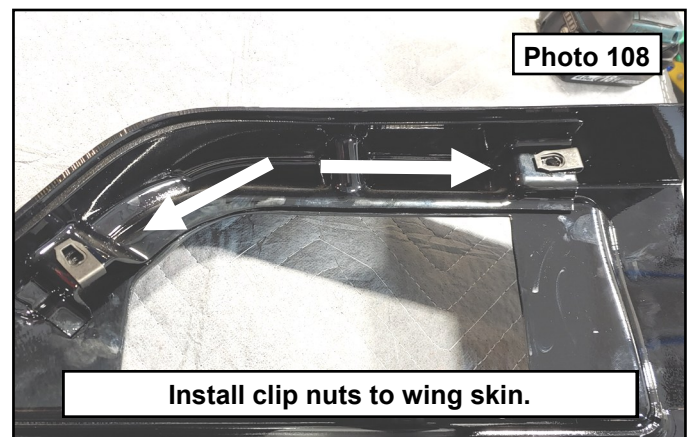
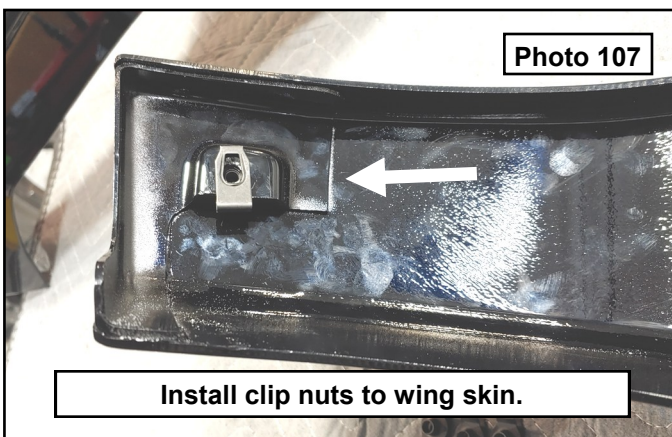
77. **\*\*\*Parking Sensor Vehicles\*\*\*** Have an assistant hold the center skin up to the bumper while you connect the parking sensor electrical connectors. Photo 103 / 104



78. **\*\*\*All models\*\*\*** Slide the center skin over the winch tray so the holes on top and bottom line up. These are slotted for adjustment later. install the center skin to the bumper internals using the provided 6mm bolts, washers and nuts. Use a washer at the bolt head and one on the opposite side with the nut at all 4 locations. Leave loose at this time. **\*\*\*Parking Sensor Models\*\*\*** zip tie the remaining harness between the middle sensors out of the way of the winch mechanism. Photo 105 / 106

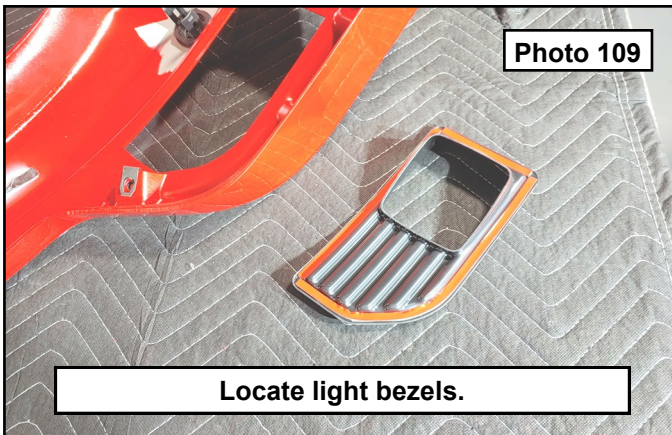


79. Install the clip nuts to the mounting locations on the wings at the end and two locations on the tops of the wing skins. Take a 6mm bolt and run it through each location to make sure the clip is centered and the bolt will thread in freely. Photo 107 / 108

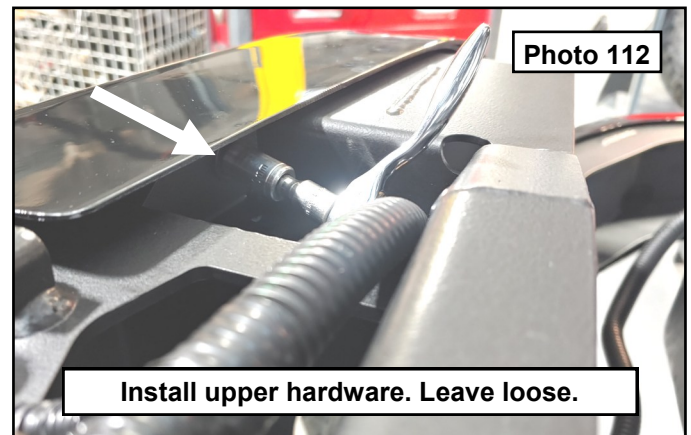
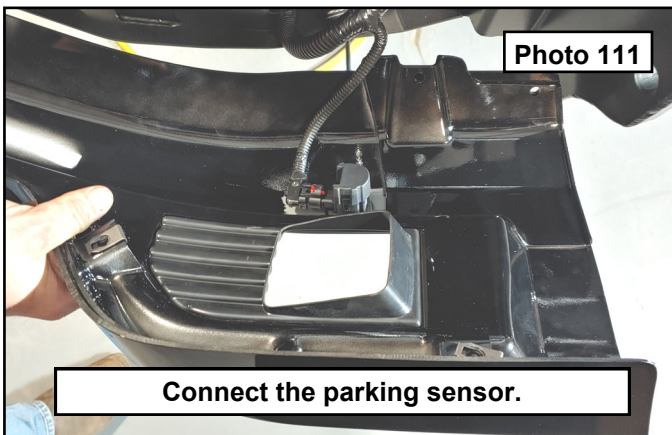




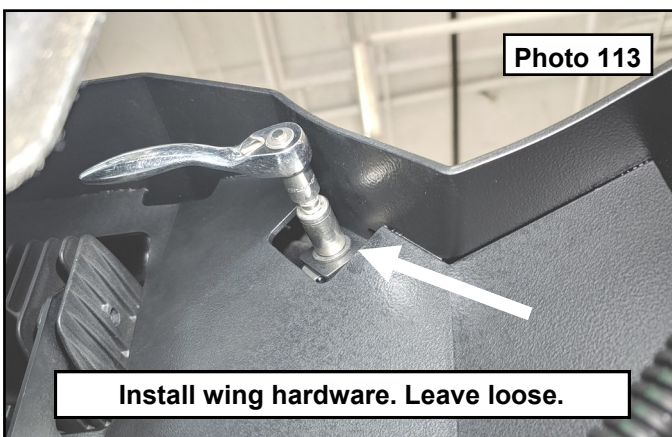
80. Locate the fog light bezels. Clean the surface of the wing covers where these will be installed with an alcohol prep pad. Peel the red backing off the double sided tape on the covers, look through the back of the wing cover and press the light bezel into place while centering everything together. Firmly press the two parts together for a minimum of 30 seconds or more depending on the ambient air temperature. **Photo 109 / 110**



81. **\*\*\*Parking Sensor Vehicles\*\*\*** connect the parking sensor electrical connector. **Photo 111**
82. Slide the wing cover over the metal wing until the holes line up. Install the wing cover to the metal wing using the provided 6mm bolts and washers using a 10mm socket. Access the upper location through the recess in the metal structure. Leave all hardware loose until directed. **Photo 112**

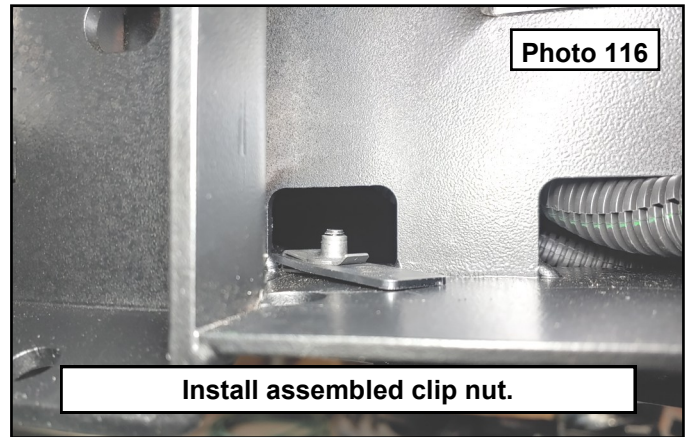
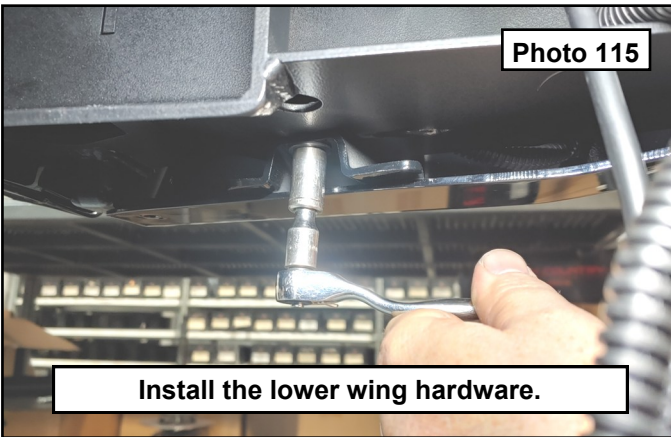


83. Install the second upper location mount from the backside of the wing next to the fog light. **Photo 113**
84. Install the outer location mount. **Photo 114**

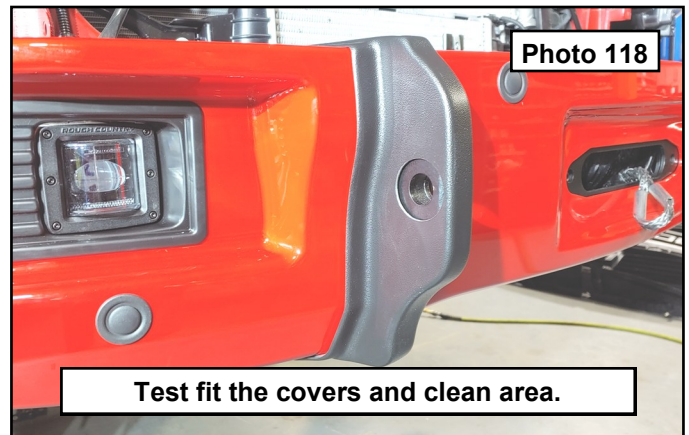




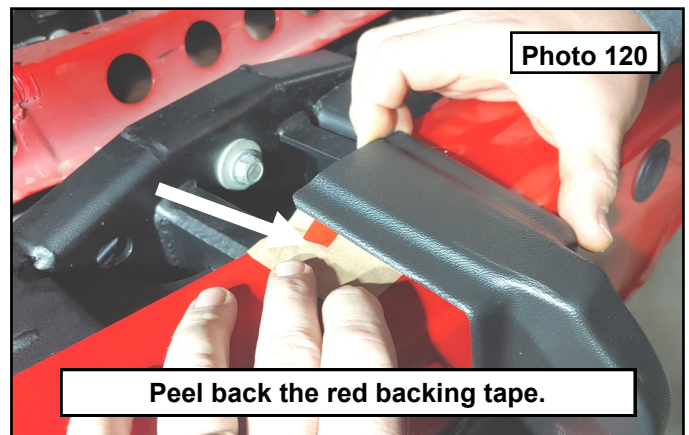
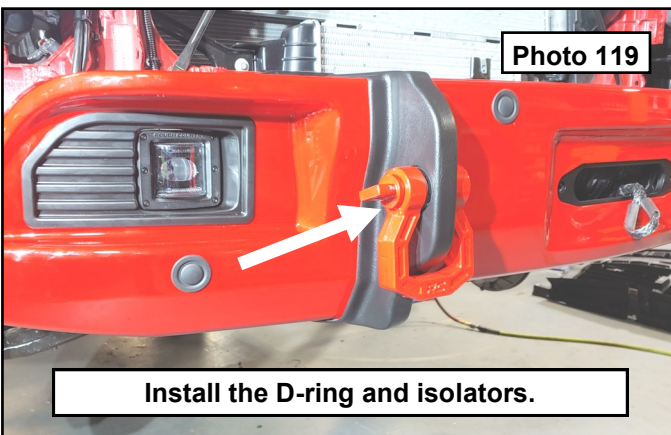
85. Install the lower wing hardware and an assembled clip nut. Leave loose. **Photo 115 / 116**



86. Locate the tow hook covers, D-rings, rubber isolators for the d-rings, and 6mm hardware. The covers are held in place by 6mm bolts in the lower edge, the d-rings in the middle and double sided tape to the skin. **Photo 117**
87. Start by test fitting the covers. You will need to make sure this lines up with the wing first. The center skin will be pulled tight lastly. Prep the wing and center skin surface by cleaning with an alcohol prep pad. **Photo 118**



88. Install the D-rings and rubber isolators to the tow hooks to hold the covers centered on the bumper. **Photo 119**
89. Start at the top of the tow hook cover, gently pull the cover up off the top of the wing and pull back enough of the red backing from the double sided tape to go past the top edge and down the front of the wing by an inch. **Photo 120**

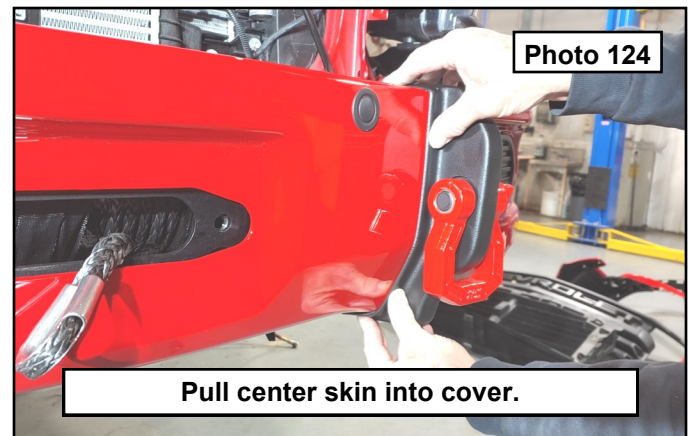
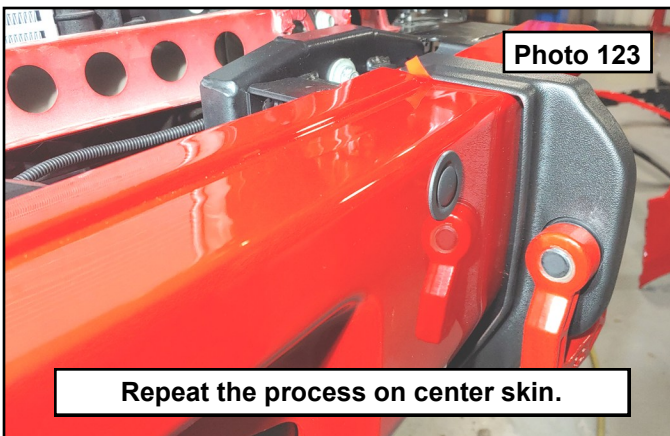




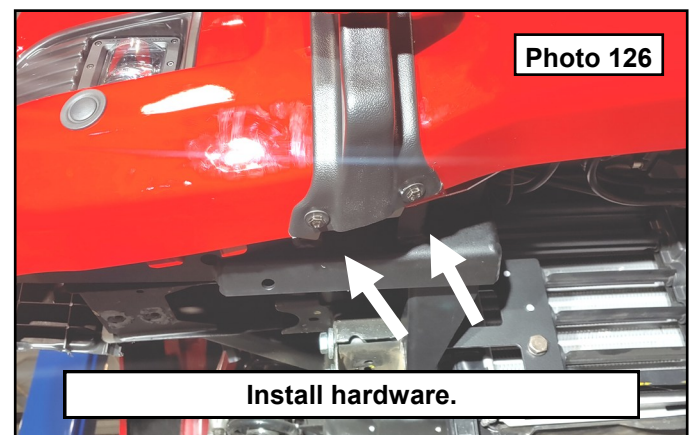
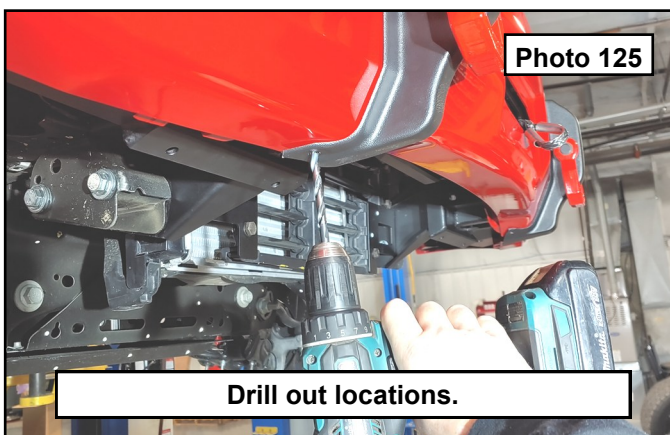
90. Once you have verified the top corner is going to match on the wing and the cover, press the top of the cover down to seat the double sided tape. **Photo 121**
91. Continue pulling the red backer out and pressing the cover into place down the face and bottom of the wing. At the bottom, pull the wing into the cover. Firmly press the parts together to set the adhesion of the tape for a minimum of 30 seconds or more depending on the ambient air temp for good adhesion of the tape. **Photo 122**



92. Repeat the process for the passenger side of the bumper. Once both sides are fully stuck to the tow hook covers, pull the center skin into place while repeating the process of the tape dance. After full adhesion is accomplished, tighten the center skin hardware. **Photo 123 / 124**

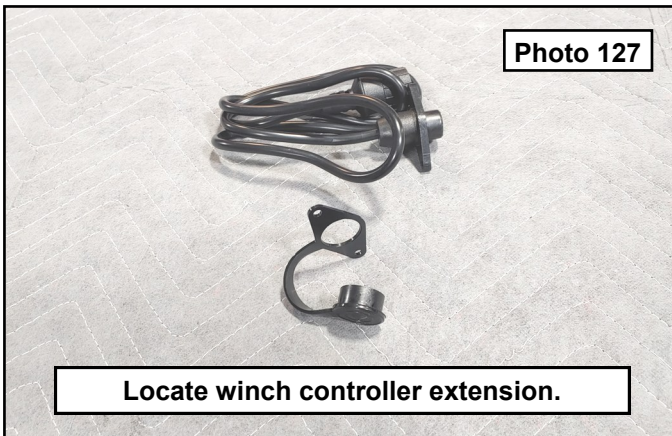


93. On the bottom of the tow hook covers, there are two mounting locations that will need to be drilled out. Use a 9/32" drill bit to drill each location through the wing and the center section. **Photo 125**
94. Install provided 6mm bolts, washers, and nut tabs. **Photo 126**

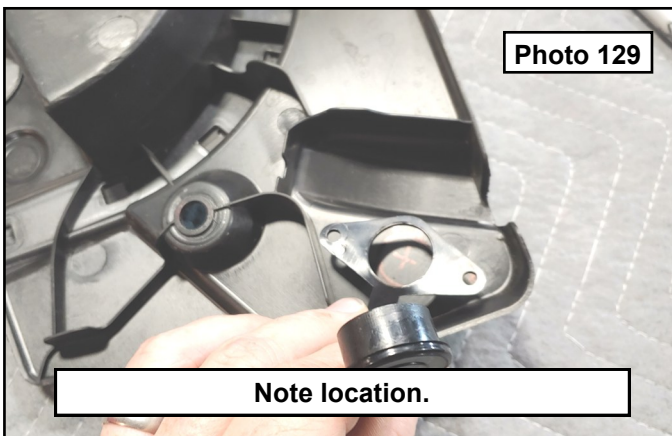




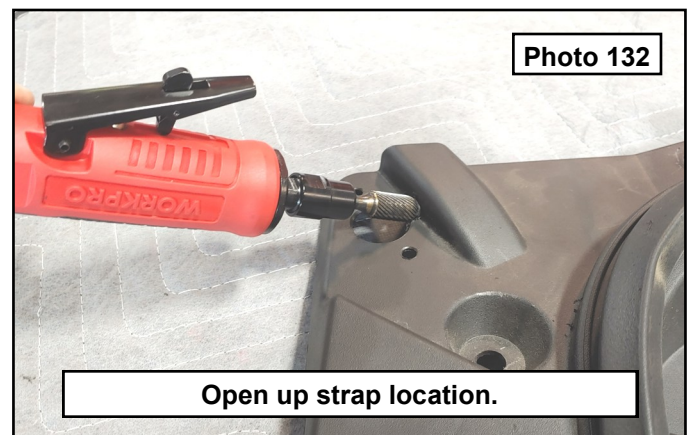
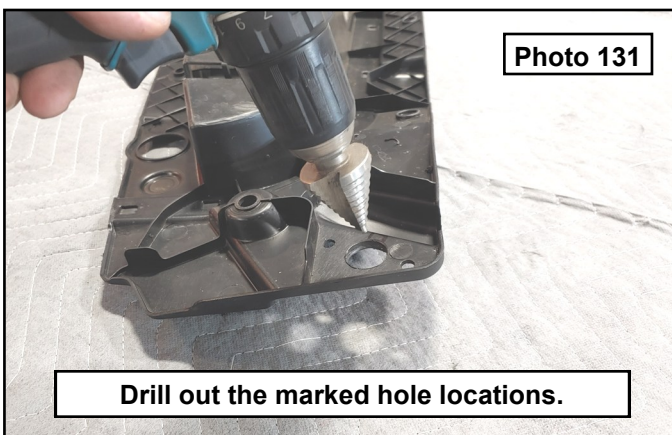
95. Locate the winch control extension. Remove the cover from the extension harness. You will use this to mark the hole location needed. **Photo 127**
96. Locate the core support cover. On the passenger side of the cover there is a flat spot that will be drilled to hold the extension. **Photo 128**



97. Flip the core support cover over and use the extension cover to mark the hole locations for the screws and the pass through for the connector. Notice the square marked at the top of the large hole location. This matches the cover tail. **Photo 129 / 130**

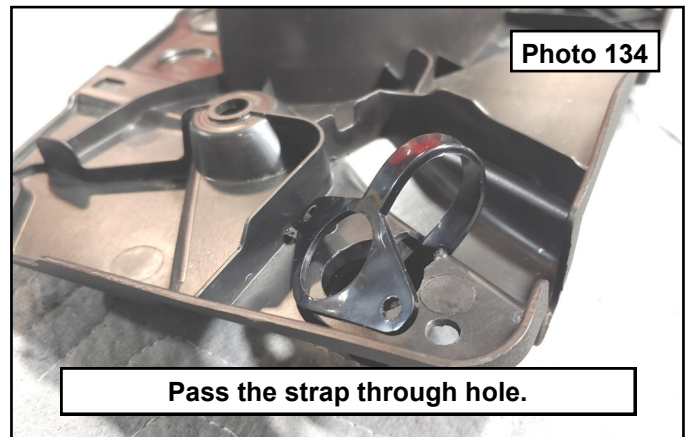
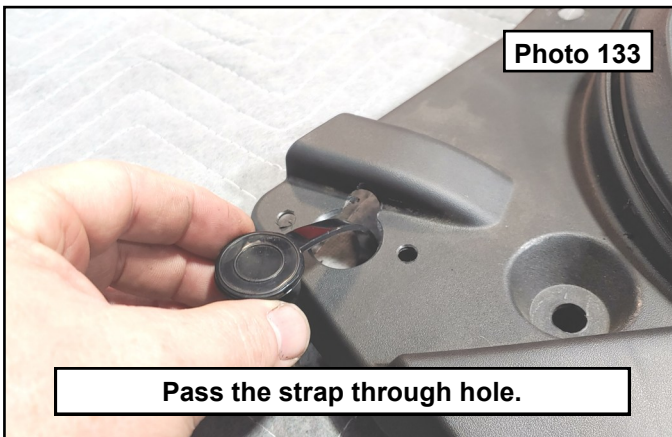


98. Use a drill and a 1" step bit to drill out the middle hole to size to fit the cover through. If you do not have a step bit that large, use a suitable tool to get the hole to size. A die grinder with burr bit or a file work well. Drill out the outer mounting holes with an 1/8" drill bit. **Photo 131**
99. Use a die grinder or other suitable tool to make the notch for the strap to pass through. **Photo 132**

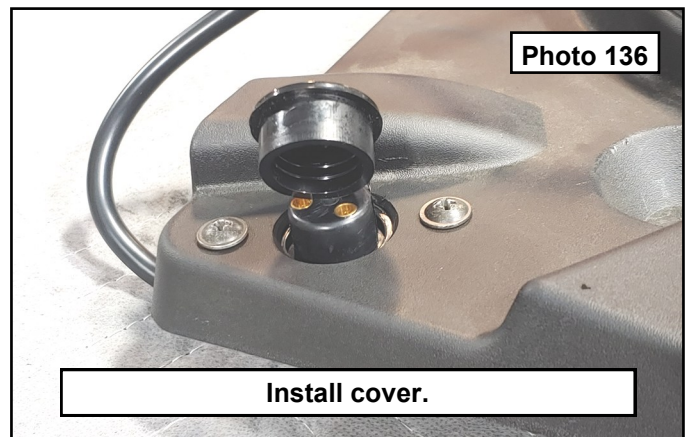
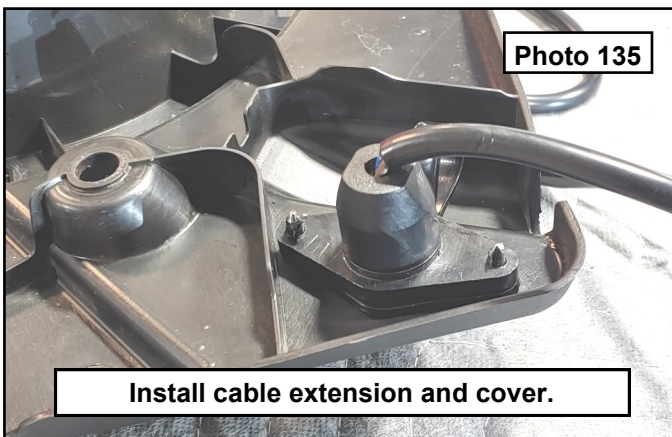




100.Clean and sand any burrs from the material. Pass the strap of the cover through the hole created. **Photo 133 / 134**

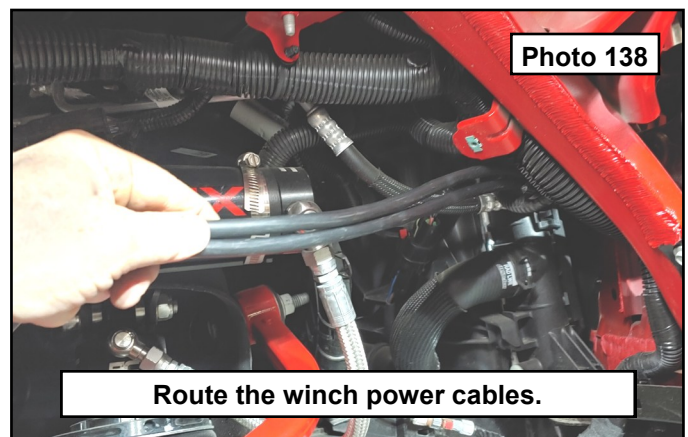
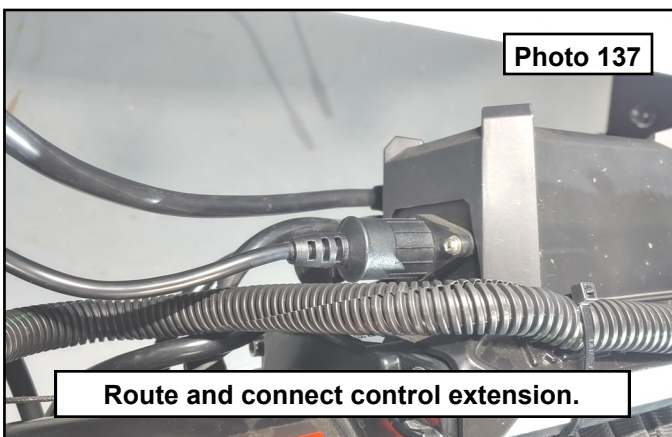


101.Install the cable extension to the core support cover with the extension cover in-between both using the provided self threading screws and a Phillips head driver. **Photo 135 / 136**



102.Set the core support cover into the engine bay. Route the winch cable extension wire down behind the passenger headlight and to the winch control box. Connect to the control box. **Photo 137**

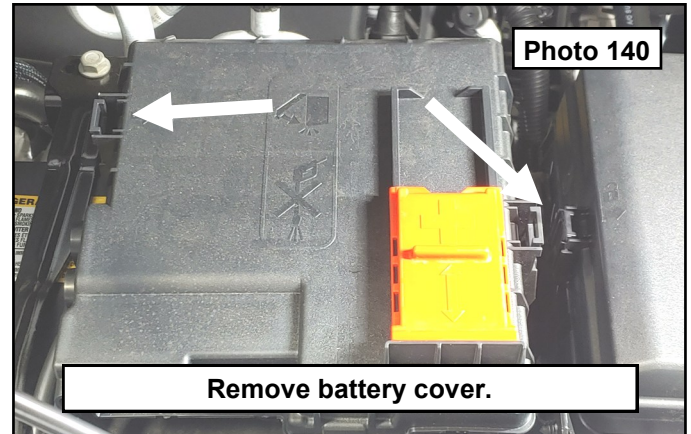
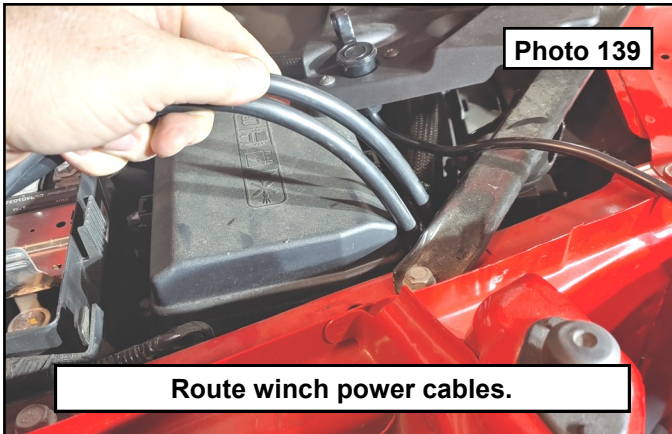
103.Route the winch battery cables under the pass headlight and into the wheel well. **Photo 138**





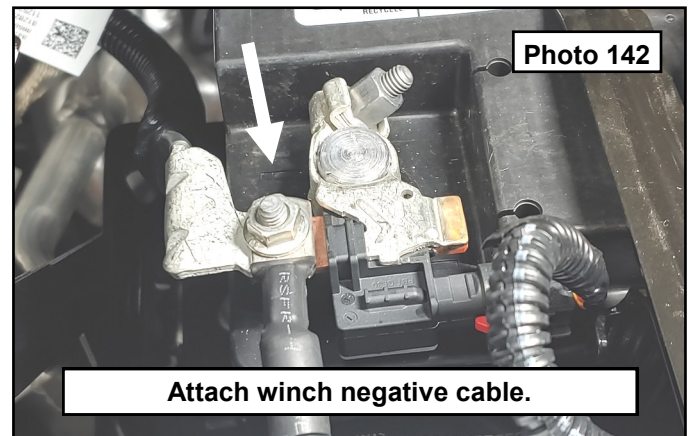
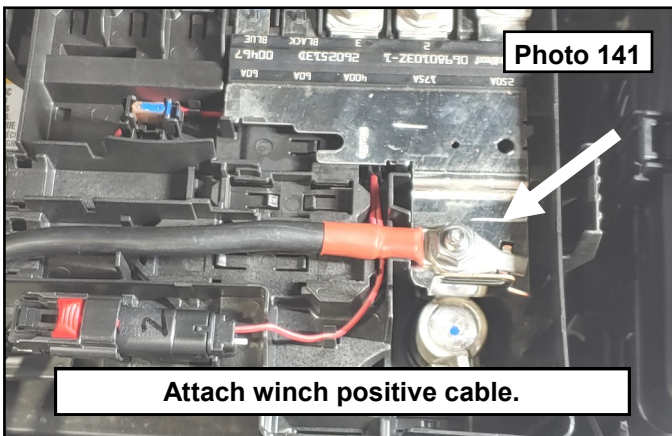
104.Route the winch power cables up into the engine bay where shown. **Photo 139**

105.Remove the cover off the positive side of the battery by pressing in the clips on either side and lifting up. **Photo 140**

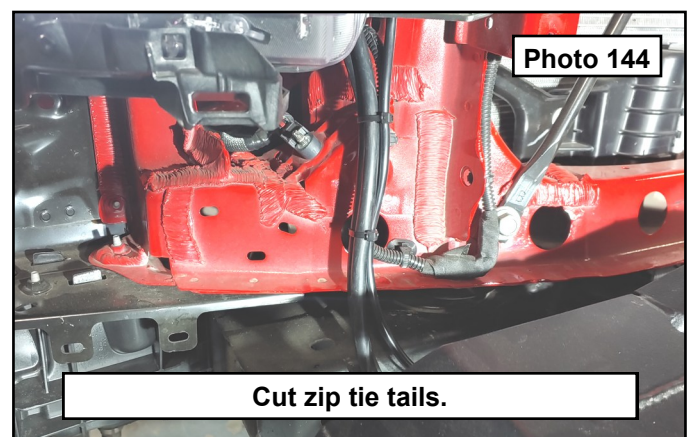
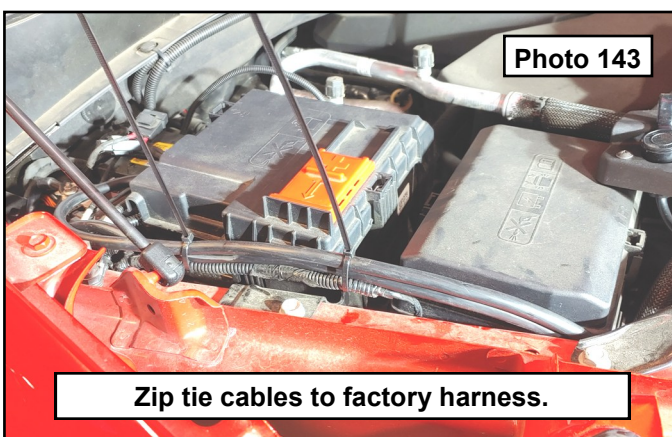


106.You will see a channel designed for the winch positive cable that lines up with a connector. Use a 13mm socket to remove the nut and attach the positive cable. Reinstall the battery cover. **Photo 141**

107.Route the negative winch cable to the negative terminal on the battery cable. Use a 10mm socket to remove the nut and attach the negative cable. **Photo 142**

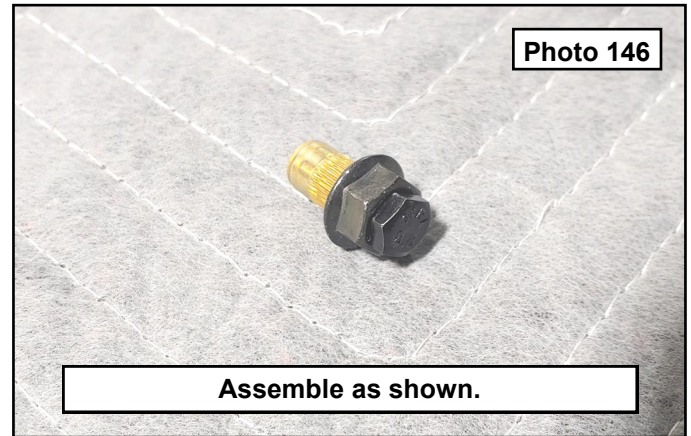
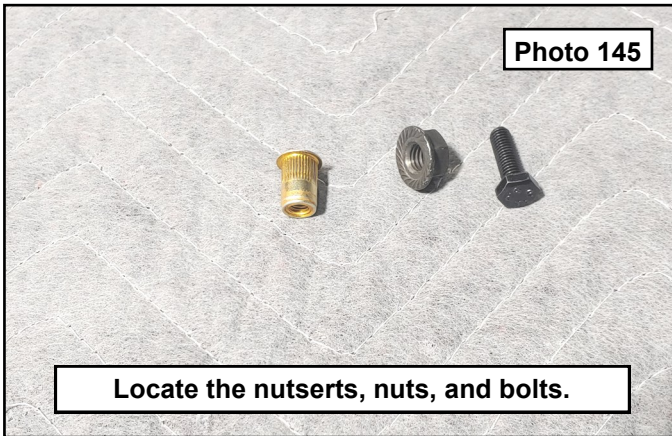


108.Zip tie the cables to the factory wire harness along the route. Trim all zip tie tails once done. **Photo 143 / 144**

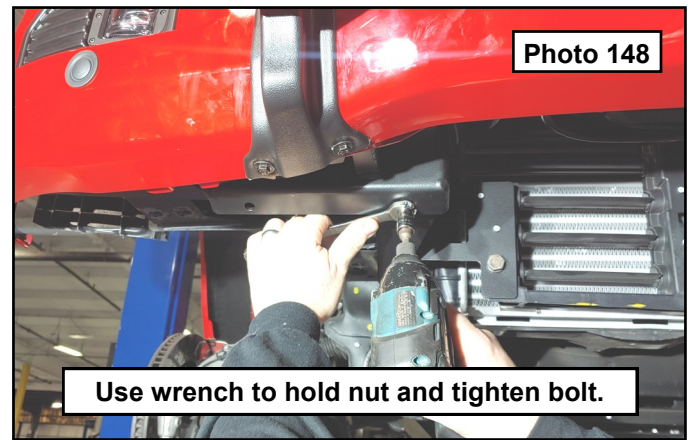
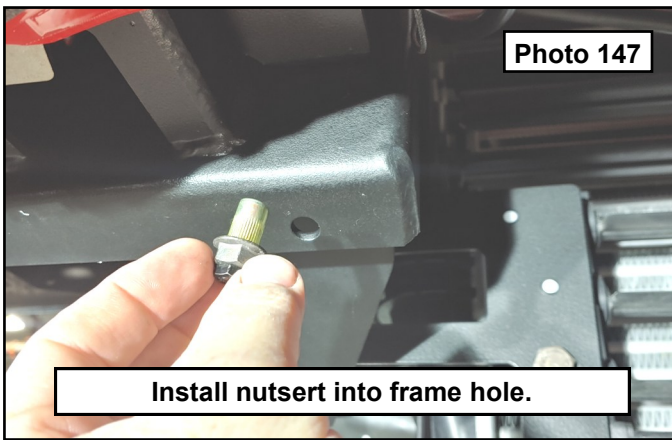




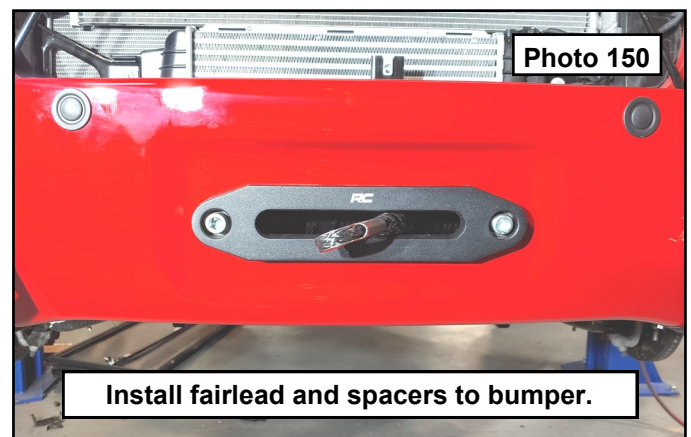
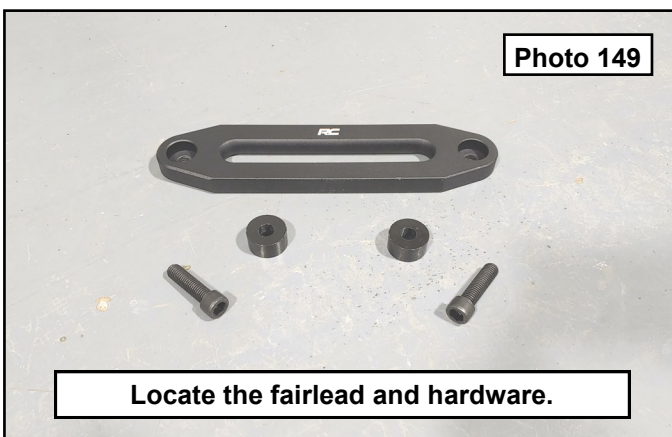
109.Prepare to install the gravel guard. Locate the 6mm nut serts, 10mm flange nut and a 6mm bolt. Assemble as shown with the 10mm flange nut acting as a spacer between the bolt and nutsert. **Photo 151 / 152**



110.Insert the assembly into the holes on the frame mounts where shown. Use a wrench to hold the 10mm flange nut still while tightening the 6mm bolt with a 10mm socket. Tighten until the nutsert is expanded and locked into the hole. **Photo 153 / 154**

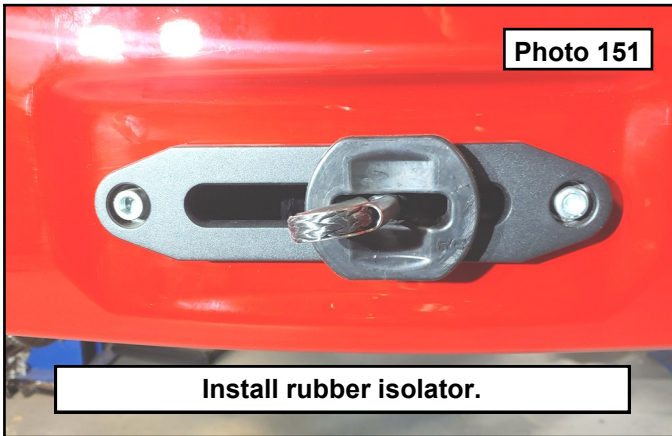


111.Locate the fairlead, two 5/8" thick spacers and 12mm socket head bolts. Pass the winch rope through the opening and install the spacers and fairlead to the bumper using the 12mm socket head bolts and a 10mm hex wrench. Photo 155 / 156



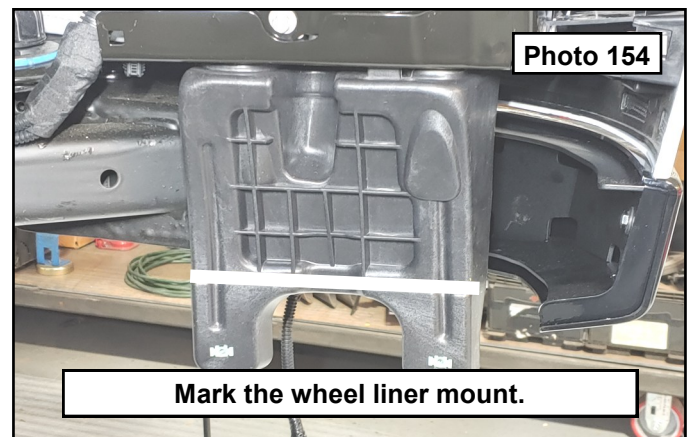
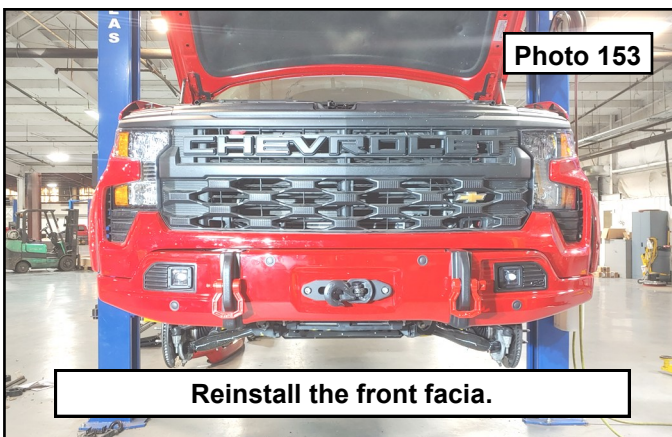


112. Install the hook isolator over the rope and then install the hook to the rope eyelet with the provided pin and cotter pin. Photo 157 / 158



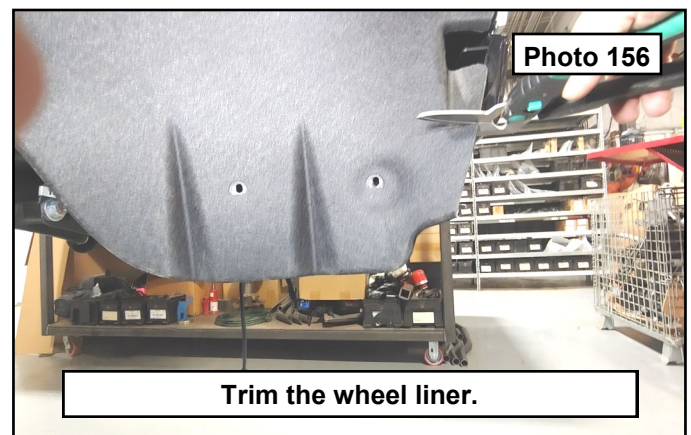
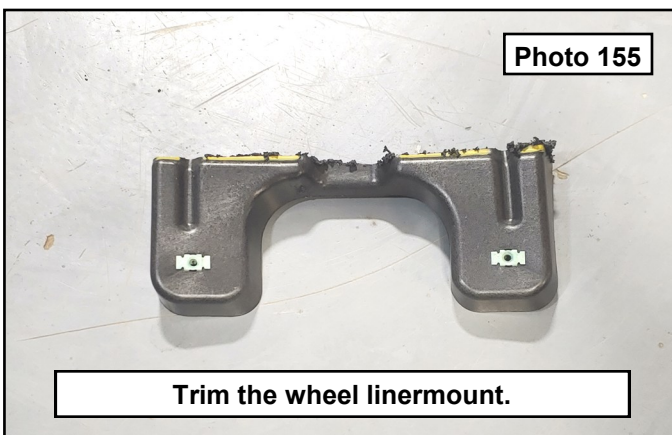
113. Install the front fascia back in the reverse order of the disassembly. Wire the lights to suit using the instructions and harness from the light kit. Photo 153

114. In the wheel well, mark the wheel liner mount as shown for trimming. Photo 154



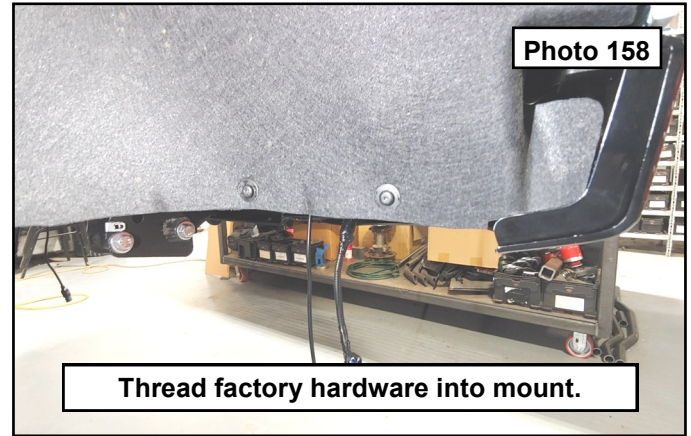
115. Use a suitable cutting tool to trim the lower piece of the wheel liner mount off. Sand any burrs smooth. **Photo 155**

116. Reinstall the wheel liner in the reverse operation as removal. Look behind the liner where the cut front mount ends up. Use a pair of shears to trim the inner wheel liner from the new bumper edge across to the frame. **Photo 156**



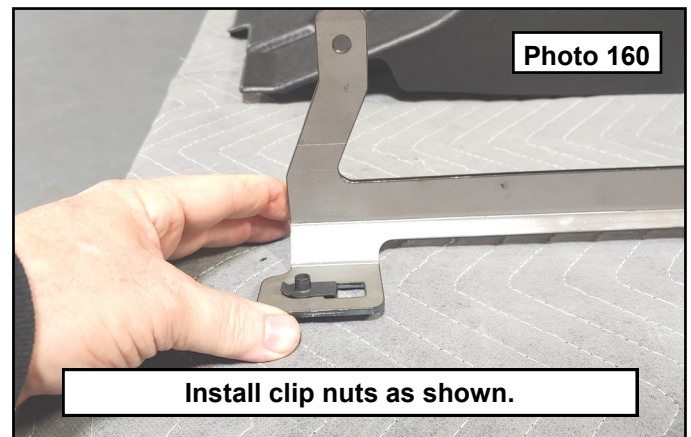
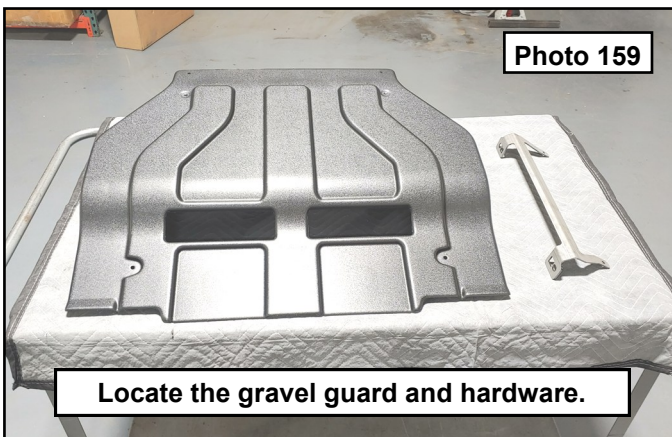


117. Hold the wheel liner to the trimmed mount, locate the flat area at each end of the mount, mark the wheel liner at these flat areas as shown. Use a drill and 7/64" bit to drill a starter hole through the liner and mount. Thread the factory hardware into the plastic mount using a T15 Torx driver. **Photo 149 / 150**

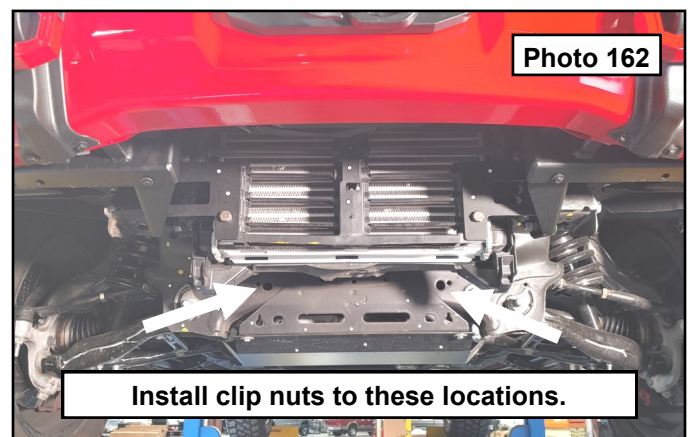
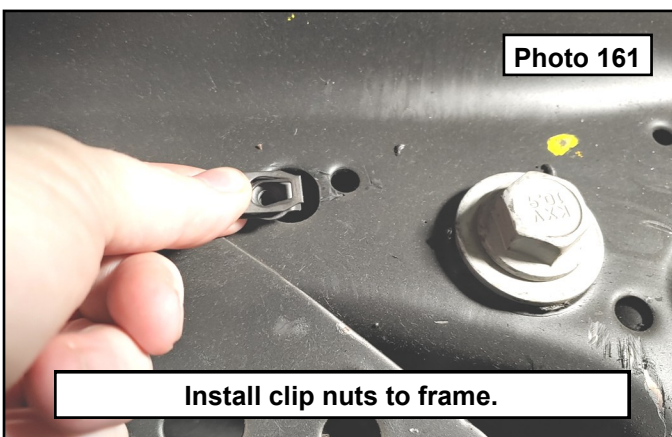


118. Locate the gravel guard, 6mm bolts, washers, clip nuts, and bracket. **Photo 159**

119. **\*\*\*6" Lifted cross member kits vehicle's\*\*\*** Install 6mm clip nuts to the bracket as shown. **Photo 160**



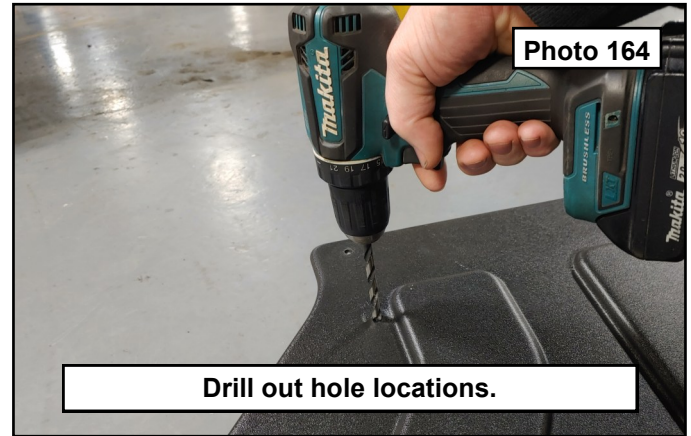
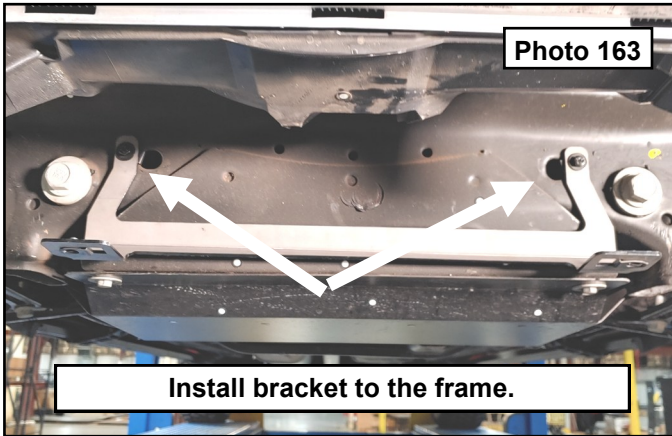
120. **\*\*\*6" Lifted cross member kits vehicle's\*\*\*** Install 6mm clip nuts to the frame locations shown. **Photo 161 / 162**





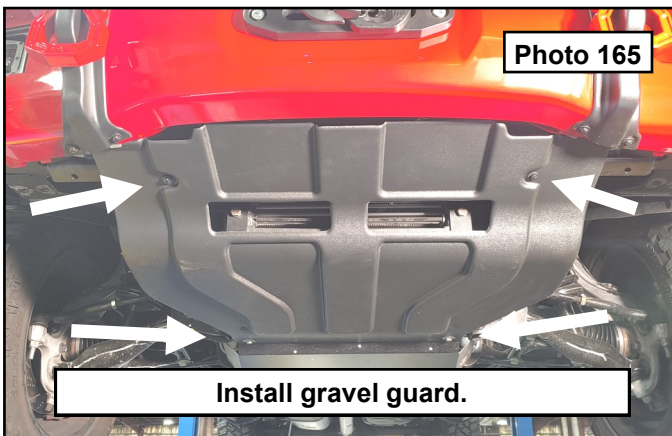
121. Install the gravel guard bracket to the frame using the 6mm bolts, and washers. **Photo 163**

122. Locate the non drilled hole locations on the gravel guard and drill out using a 1/4" drill bit. **Photo 164**



123. Install the gravel guard to the bumper mounts using the 6mm bolts and washers. Install to the stock crossmember using the factory bolts or to the gravel bracket using the 6mm, bolts and washers. **Photo 165**

124. **\*\*\*Front License Plate Vehicles\*\*\*** If a winch is installed, purchase of license plate bracket (Part #RS124) will be necessary. Removal of rubber isolator is necessary for use of bracket. **Photo 166**

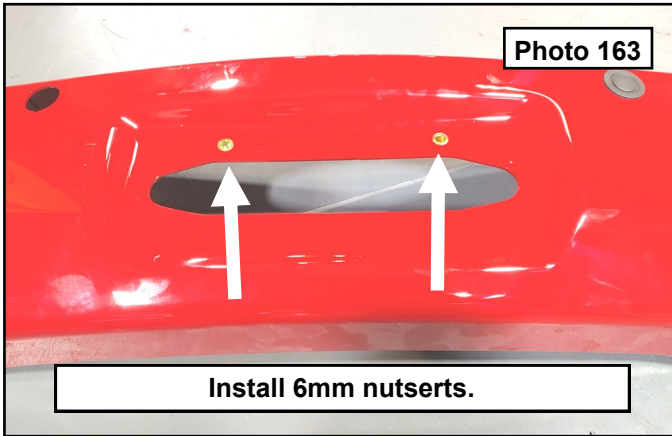


125. **\*\*\*Non Winch Optioned License Plate Installation\*\*\*** Lay license plate onto bumper skin and mark two hole locations for mounting license plate to bumper. Drill out locations using a 25/64" drill bit. **Photo 167 / 168**





126. Install 6mm nutserts into the drilled holes the same way done into the frame. Install plate using the provided 6mm bolts, and washers. **Photo 168**



**IMAGE**  
COMING SOON

By purchasing any item sold by Rough Country, LLC, the buyer expressly warrants that he/she is in compliance with all applicable , State, and Local laws and regulations regarding the purchase, ownership, and use of the item. It shall be the buyers responsibility to comply with all Federal, State and Local laws governing the sales of any items listed, illustrated or sold. The buyer expressly agrees to indemnify and hold harmless Rough Country, LLC for all claims resulting directly or indirectly from the purchase, ownership, or use of the items.