



# Installation Instructions

## PowerBoard®

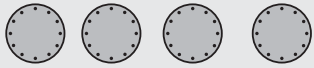
Automatic Retracting Running Board

### Vehicle Application

- Ford Super Duty F-250/350/450  
Crew Cab  
2008 and newer  
Part Number: 75134-15

[www.bestop.com](http://www.bestop.com) - We're here to help! Visit our web site and click on "[Ask a Question](#)". Click here for more [Truck Accessories by Bestop](#).

#### INSTALLATION TIME



4 Hours

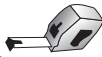
#### SKILL LEVEL



4 - Difficult

#### TOOLS

Tape Measure



Flat-Head Screwdriver



Phillips Screwdriver



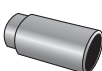
Ratchet



Extension



Socket



8 mm,  
13 mm

Wrench



13 mm

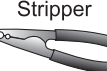
Crimp Tool



Wire Cutters



Wire Stripper



Allen Wrench



7/32" and  
5 mm

Electrical Tape



Silicone Sealant



Vise Grips



Safety Glasses



**! WARNING** The manufacturer strongly recommends that this product be professionally installed.

**! WARNING** Failure to carefully follow the electrical installation steps could result in severe electrical shock which could harm the installer and/or damage the vehicle.

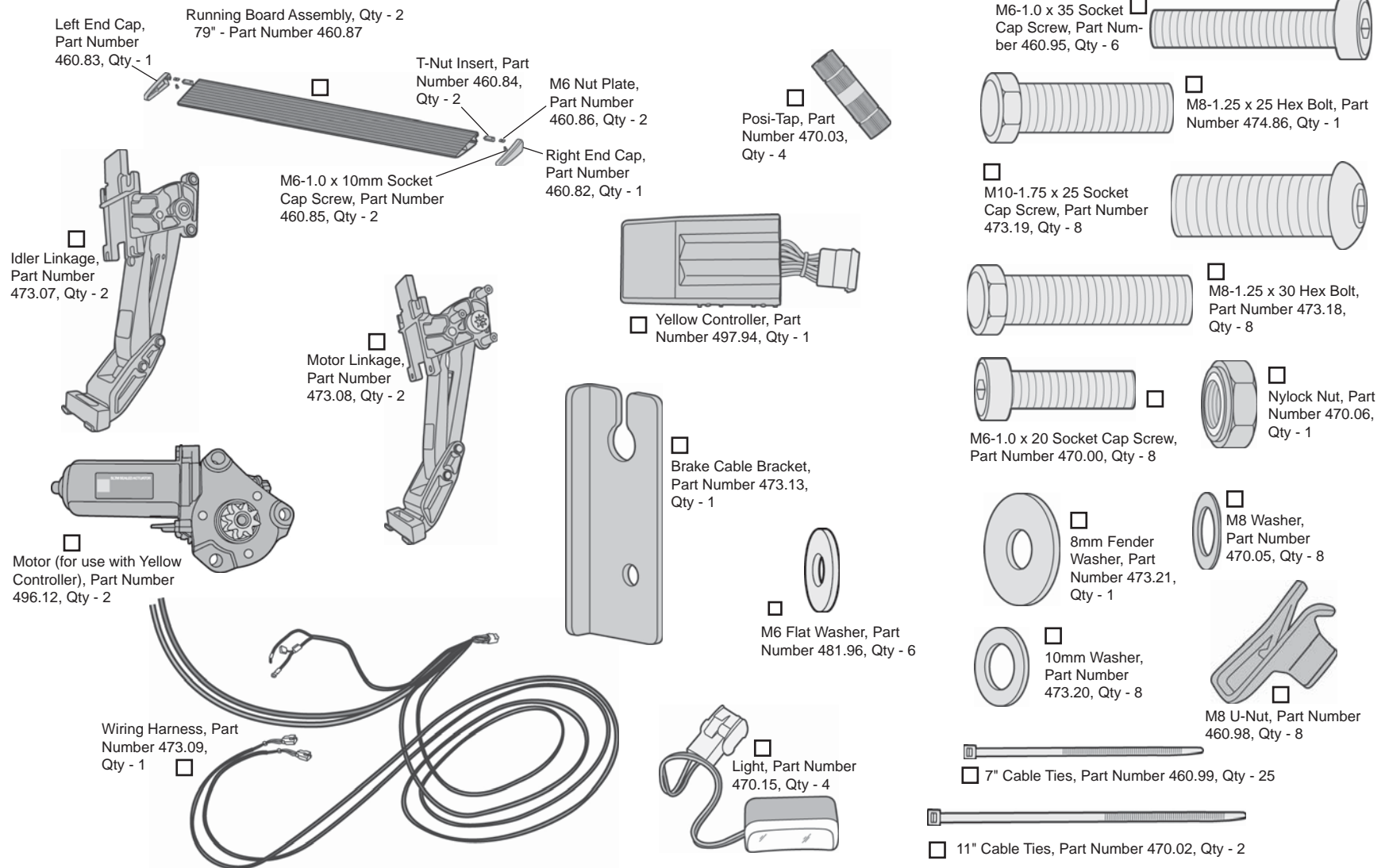
**! WARNING** Do not rely in any way on the components of this product to protect against injury or death in the event of an accident. Never operate the vehicle in excess of manufacturer's specifications.

#### WEAR SEAT BELTS AT ALL TIMES

Read and follow, precisely, all installation instructions provided when installing product. Failure to do so may result in a poor fit and could place occupants of the vehicle in a potentially dangerous situation.

# PowerBoard® – Installation Instructions

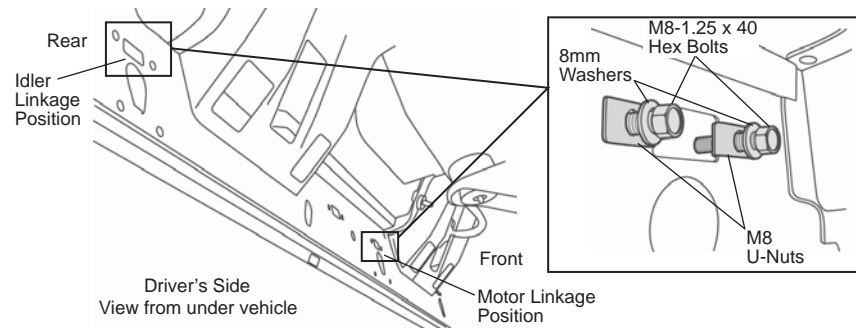
## Parts List and Hardware Identification



## PowerBoard® – Installation Instructions

### 1 Install M8 U-Nuts

Counting from the front, locate the second (2nd) and last set of mounting holes on the inner sill on the driver's side. Use an M8-1.25 x 40 Hex Bolt and an 8mm Washer to install an M8 U-Nut on each side of each hole. Do not tighten the bolts at this time.

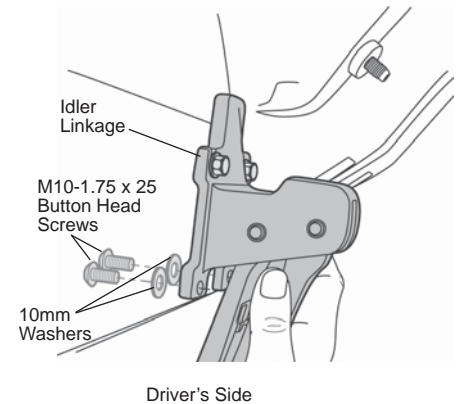


### 2 Install Linkages

Install an Idler Linkage in the rear hole and a Motor Linkage in the front hole. Slip the notches in the Linkages under the bolts and washers installed in Step One. Secure the bottom of the Linkages with two M10-1.75 x 25 Button Head Screws and two 10mm Washers.

**Do not tighten the bolts at this time.**

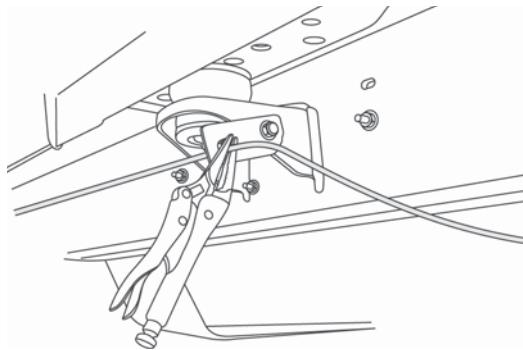
Repeat Steps One and Two on the passenger side of the vehicle.



### 3 Loosen Parking Brake Cable

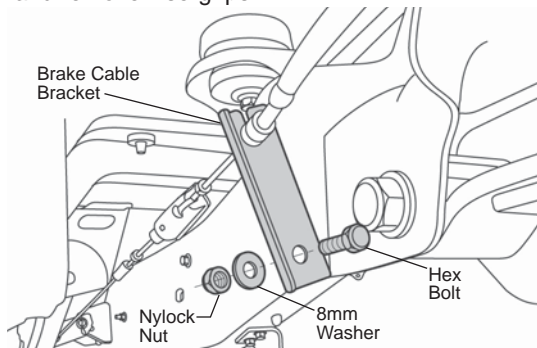
Disengage parking brake.

Pull parking brake cable to the rear from the forward support bracket to create slack in the cable. Secure the cable slack with vise-grips.



### 4 Install Brake Cable Bracket

Remove the cable from the rear support bracket and use the Hex Bolt, 8mm Washer and Nylock Nut to install the Brake Cable Bracket on the front of the support bracket. Reinstall the parking brake cable and remove vise-grips.



**! WARNING** Remove the fuse from the Wiring Harness.

### 5 Remove Fuse from Wiring Harness

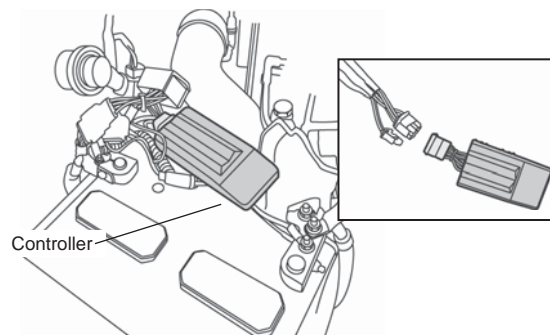
Remove the fuse from the Wiring Harness. Failure to do so could result in severe electrical shock which could harm the installer and/or damage the vehicle.



## PowerBoard® – Installation Instructions

### 6 Connect Controller to Wire Loom and Wire Harness

Connect the Controller to the vehicle wire loom. Connect both connectors on the Wire Harness in the parts kit to the connectors on the Controller. Secure the locking tabs on the connectors.

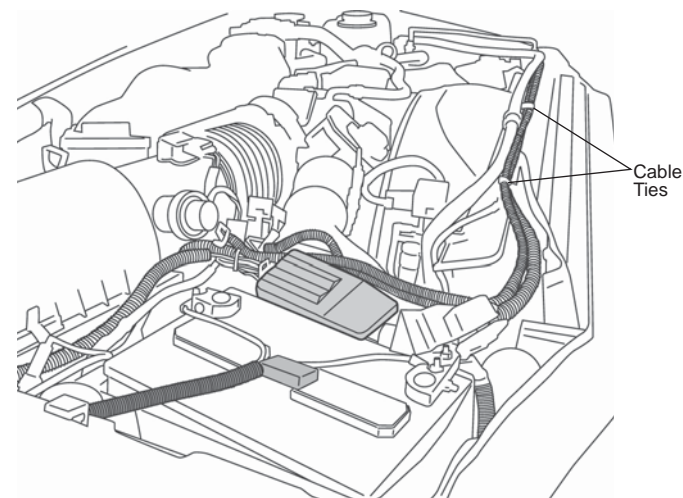


### 7 Secure Controller and Wire Harness

Connect the Controller power and ground to battery, red lead to positive and black lead to negative.

Route the Wire Harness legs down to the wheels wells and to the Motor Linkages. The long leg goes across the front to the driver's side.

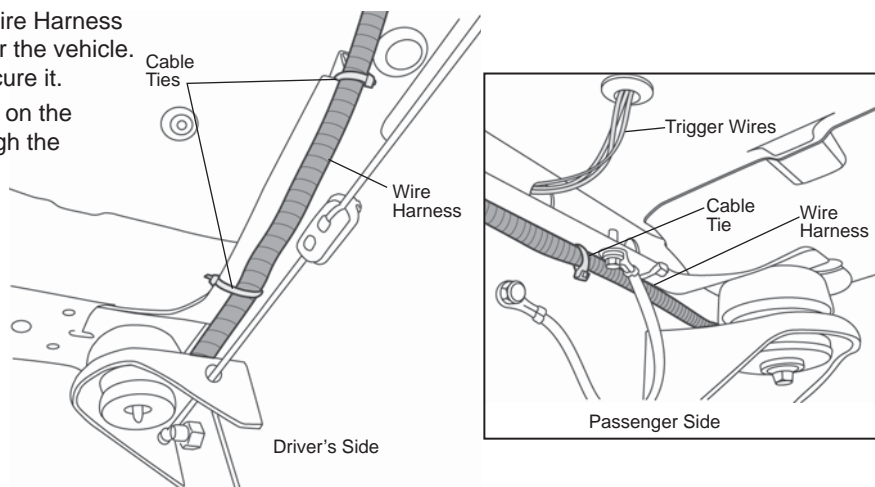
Use Cable Ties to secure all loose sections of the harness.



### 8 Route Wire Harness

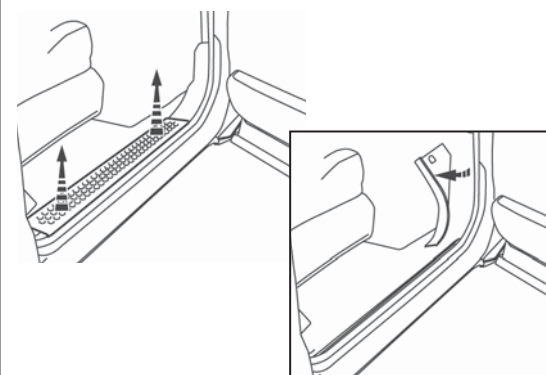
Run the legs of the Wire Harness down and along under the vehicle. Use Cable Ties to secure it.

Run the trigger wires on the passenger side through the grommet as shown.



### 9 Remove Kick Panel

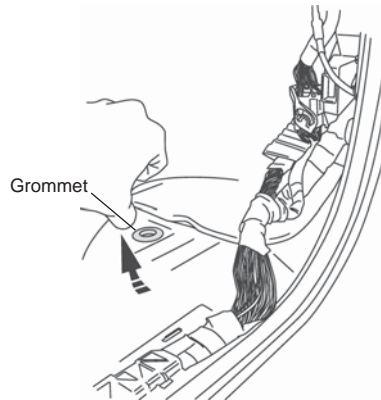
Open the passenger door and remove the sill plate and kick panel.



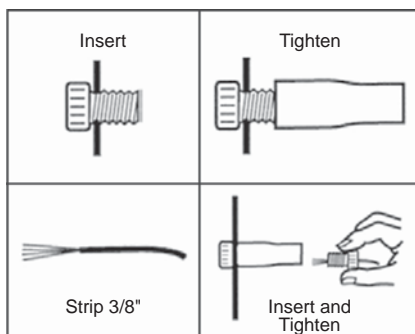
## PowerBoard® – Installation Instructions

### 10 Access Trigger Wire

Pull back the carpet and pull the trigger wires through the grommet. Seal the holes in the grommet with silicone sealant.



**NOTE** Occasionally the actual wire color may be different than stated here. You will need to install the motor and test each wire until you find the wire that functions correctly.



Posi-Tap™ Instructions

### 11 Wiring

The trigger wires are color coded to match the factory door ajar wires. Use the Posi-Taps to connect the trigger wires to the matching door ajar wires.

#### DRIVER SIDE

Front Driver Side: Dark Green with Purple stripe. Avoid lighter green wires as these will not work.

Rear Driver Side: Dark Green. Avoid lighter green wires as these will not work.

**REGULAR CAB / SUPER CAB:** These models do not have rear door ajar wires. Connect this wire to the constant ground wire (Purple with Black Stripe).

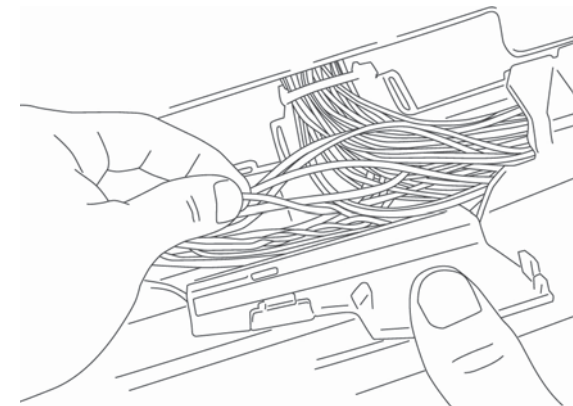
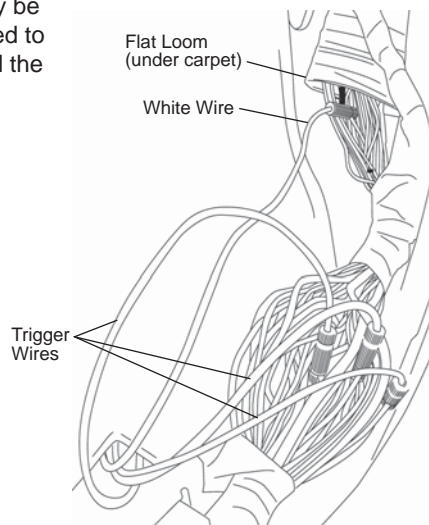
#### PASSENGER SIDE

Front Passenger Side: White wire found just below flat loom as shown.

Rear Passenger Side: Yellow. The correct yellow wire goes to the back door. Pull up on the yellow wire that leads to the back and does not cross over to the driver's side at the junction. There will be movement of the correct wire near where the trigger wires connect.

**REGULAR CAB / SUPER CAB:** These models do not have rear door ajar wires. Connect this wire to the constant ground wire (Purple with Black Stripe).

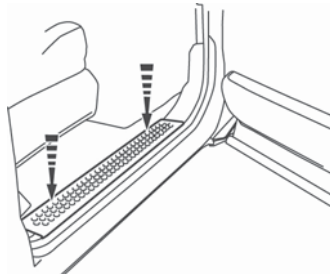
If you can not find the wire with the correct color you will need to install the motor (Step 13) and test each individual wire until you find the one that functions correctly.



## PowerBoard® – Installation Instructions

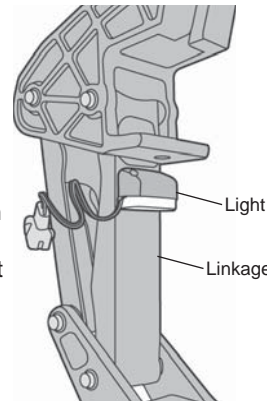
### 12 Reinstall Kick Panel

Secure the wires and reinstall the kick panel and sill plate. Be careful not to pinch any wires when replacing the panel.



### 13 Install Lights

Clean the outboard surface of the of the Linkage below the bottom mounting bolt. Peel the adhesive liner off the back of the Light and firmly press it 1/8" below the mounting bolt. Plug the light into the connector with the black and orange wires in the wire harness. Repeat with the other three lights. Secure loose wires with Cable Ties.

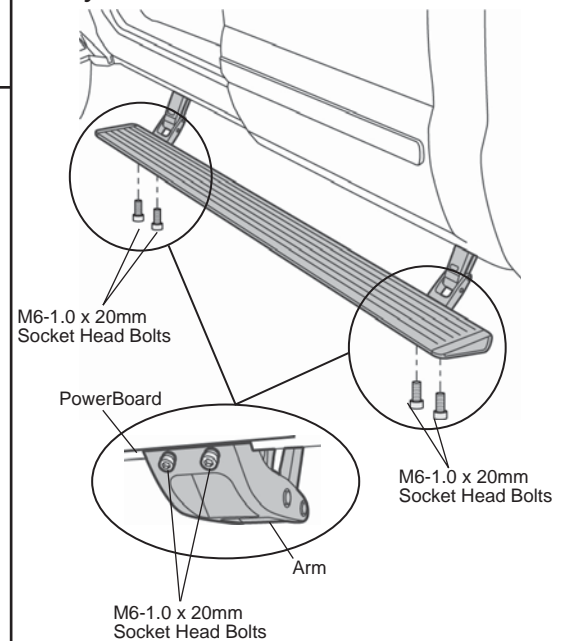


### 14 Install Running Boards

Mount the Steps to the linkages. Slide the mounting T-Nut into position. Install M6-1.0 x 20mm Socket Head Bolts to secure the boards. Use a 5mm Allen Wrench to tighten the bolts.

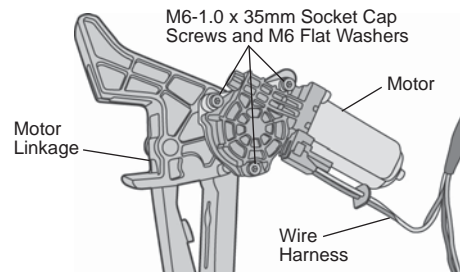
Make sure the board moves up and down freely by hand. If it binds, loosen the linkage to body attachment bolts and adjust the linkage position until the boards move freely. **Do not tighten the bolts at this time.**

**NOTE** *Tightening the fasteners before cycling the step several times may create a bind, causing a squeaking sound and preventing the boards from retracting completely and evenly.*



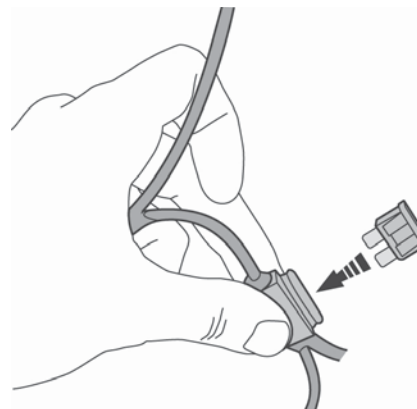
### 15 Install Motor

Slide Motor assembly onto drive shaft and mounting bosses of Motor Linkage assembly. Use three (3) M6-1.0 x 35mm Socket Cap Screws and M6 Flat Washers to secure Motor. Plug female connector into Motor. Wrap any exposed wires from the motor with electrical tape. Torque the screws to 5–7 ft. lbs. (6.78–9.49 Nm or 60-84 in. lbs.).



### 16 Reinstall Fuse

Reinstall the fuse in the harness.



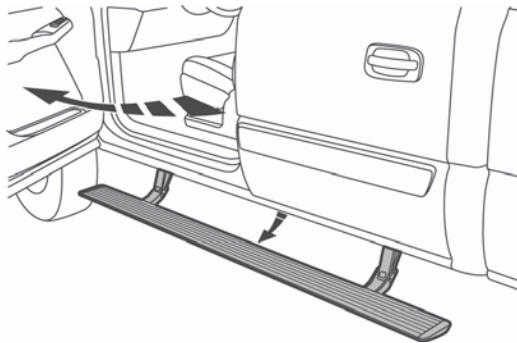
## PowerBoard® – Installation Instructions

### 17 Test Doors and PowerBoards®

Open the doors to make sure that the PowerBoard® drops into position on each side of the vehicle.

***Cycle boards several times and then fully tighten all bolts.***

Reinstall any remaining trim panels.



### PowerBoard® Troubleshooting

#### Issue:

- Possible cause

#### Boards do not operate:

- Connected to incorrect vehicle wire
- Wire connections not secure
- Fuse burned
- Factory door-ajar circuit inoperable

#### Board creaks or squeaks during operation:

- Gear shaft wedge bolt is loose
- Loosen mounting bracket and board attachment screws. Adjust linkages so they are parallel to each other and the noise is gone. Tighten all fasteners.

#### Intermittent operation:

- Wire connections not secure
- Bad ground
- Bad battery connection

#### Boards operate randomly:

- Wire connections not secure
- Connected to incorrect vehicle wire

#### Board stays down all the time and can be moved by hand:

- Gear shaft wedge screw is missing or loose

#### Board shakes and or shutters during operation:

- Bad ground
- Wire connections not secure
- Bad battery connection

#### One or more doors operate the board and other do not:

- Wire connections not secure

### PowerBoard® Service Tips

#### Confirming PowerBoard® is functional-black controller:

To test if the red controller (473.11), wire harness, motor and lights work, hook up to battery and touch any of the 4 door trigger wires to + 12V. The board for that side should go down and the lights should turn on. The board should go up and the lights should turn off when the wire is removed from + 12V.

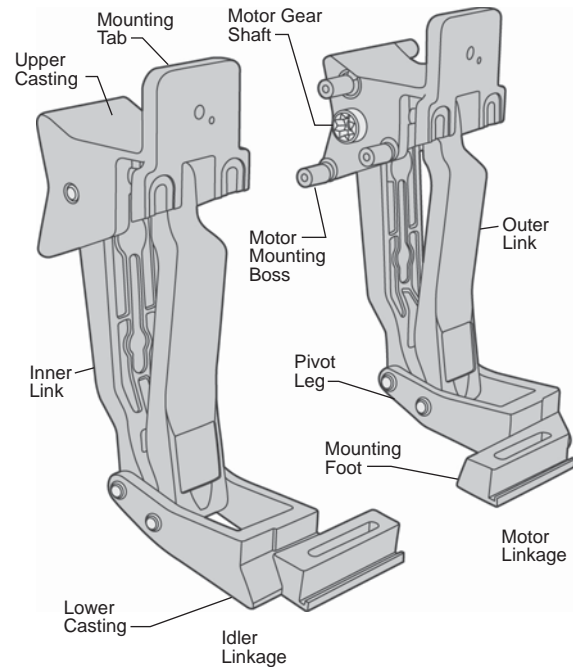
#### Boards don't operate correctly when connected to wires identified in instructions:

Unfortunately vehicle manufactures do not consistently keep the same wire colors in their wire harnesses. The PowerBoard® trigger wires need to be connected the factory door-ajar wire that is connected to each door latch switch. The correct wire is likely in the same bundle that is identified in the instructions. If none of them work you can locate the correct wire by removing the door panel and tracing the wire bundle that leads to the door latch.

Use a volt meter or test light to find the door-ajar wire on PowerBoards® with red controllers. The correct wire will go from ground to +12 volts when the door is opened and return to ground when the door is shut. Connect one test lead to the negative battery terminal and probe the wires with the other lead. You can use a pin or a Posi-Tap connector to pierce the wire insulation. The correct wire will make the tester go from no voltage to positive voltage when the door is opened and return to no voltage when the door is shut. You can also shut the door latch with the door open by pushing on the latch catch with a screw driver.

## PowerBoard® – Installation Instructions

### Linkage Component Identification



### LIMITED WARRANTY

We warrant our product to be free from defects in material and workmanship, for the terms specified below, provided there has been normal use and proper maintenance. This warranty applies to the original purchaser only. All remedies under this warranty are limited to the repair or replacement of any item or items found by the factory to be defective within the time period specified. If you have a warranty claim, first you must call our factory at the number below for instructions. You must retain proof of purchase and submit a copy with any items returned for warranty work. Upon completion of warranty work, if any, we will return the repaired or replaced item or items to you freight prepaid. Damage to our products caused by accidents, fire, vandalism, negligence, misinstallation, misuse, Acts of God, or by defective parts not manufactured by us, is not covered under this warranty.

THE WARRANTY TIME PERIOD IS AS FOLLOWS FOR ALL PowerBoards®  
MANUFACTURED BY OUR COMPANY: THREE YEARS / 36,000 MILES FROM DATE OF PURCHASE.

ANY IMPLIED WARRANTIES OF MERCHANTABILITY AND/OR FITNESS FOR A PARTICULAR PURPOSE CREATED HEREBY ARE LIMITED IN DURATION TO THE SAME DURATION AND SCOPE AS THE EXPRESS WRITTEN WARRANTY. OUR COMPANY SHALL NOT BE LIABLE FOR ANY INCIDENTAL OR CONSEQUENTIAL DAMAGE.

Some states do not allow limitations on how long an implied warranty lasts, or the exclusion or limitation of incidental or consequential damages, so the above limitations or exclusions may not apply to you. This warranty gives you specific legal rights, and you may also have other rights which vary from state to state.

For further information or request for warranty work, please contact:

Bestop Inc. Customer Service  
Toll-Free: (800)845-3567  
Main: (303)465-1755  
E-mail: [csbestop@Bestop.com](mailto:csbestop@Bestop.com)  
Website: [www.Bestop.com](http://www.Bestop.com)

