
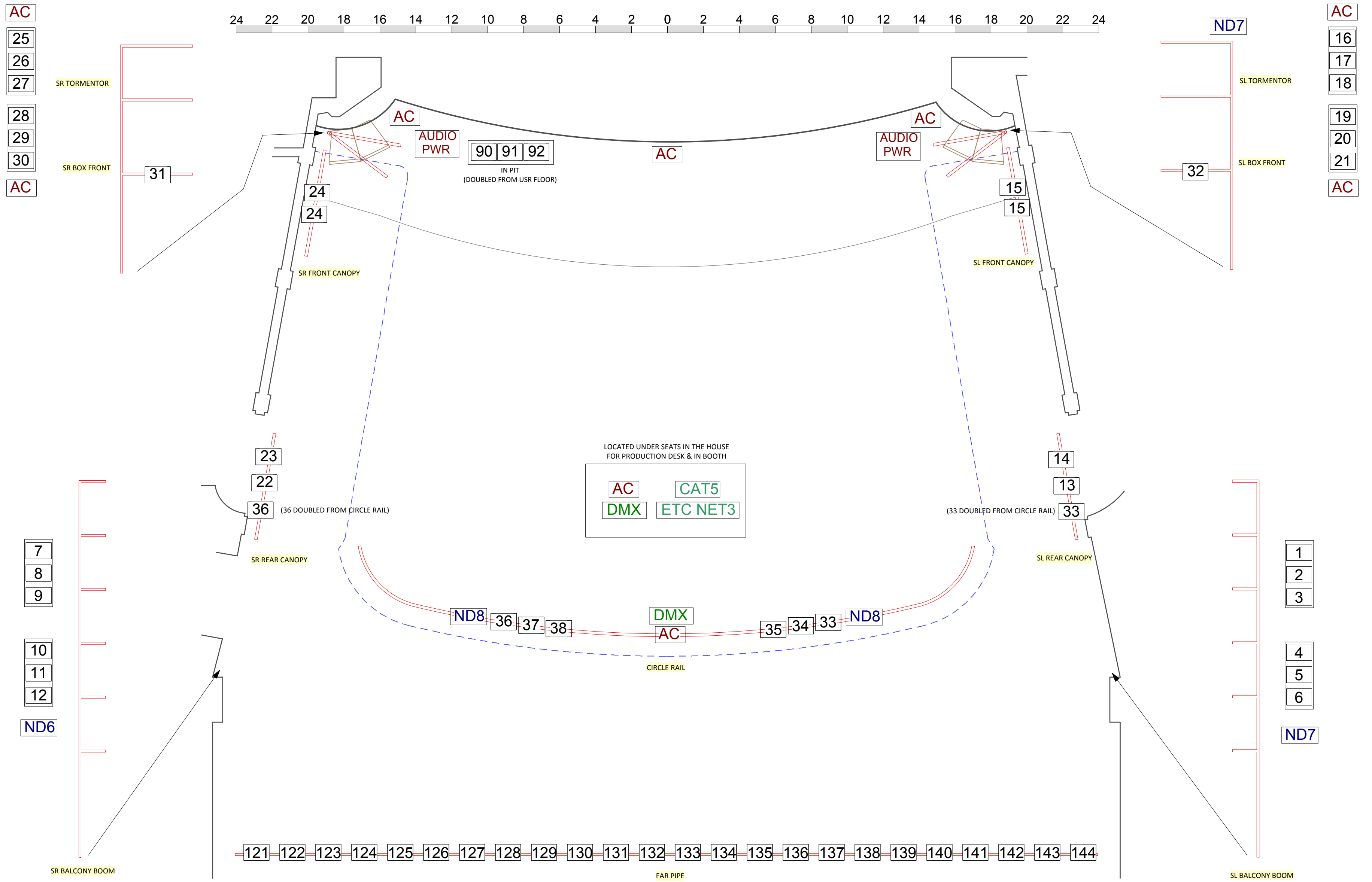


FLY LAYOUT NOTE:
 EXCEPT FOR ELECTRICS, CURRENT LOCATION OF SOFT GOODS MAY NOT BE 100% ACCURATE. PLEASE CHECK WITH TD TO CONFIRM CURRENT HANGING LOCATIONS.

SIDE TRUSS:
 THE SIDE TRUSS IS FOR SIDE LIGHTING, SIDE LIGHTING PIPES, AND GERMAN MASKING. SIDE LIGHTING PIPES ARE NOT PERMITTED TO BE HUNG OFF THE STAGE ELECTRICS. ALL MUST BE RIGGED FROM THE TRUSS.

	
CIRCUIT LAYOUT 2014	
MCPHERSON PLAYHOUSE - STAGE	
190 DIMMERS	
12 HOUSELIGHT DIMMERS	
LX PLOT: A. WILKINSON	1 OF 2
DIRECTOR:	
VENUE CAD: T. HEEMSKERK	
DRAWN BY: B. KEITH	
DATE: AUG. 26, 2014	
SCALE: 1/4" = 1'-0"	REVISION:



PLEASE NOTE:
 THE LOCATION OF THE FAR PIPE POSITION HAS BEEN CHEATED CLOSER TO THE STAGE FOR THIS DRAWING. TO VIEW THE ACTUAL PLACEMENT, PLEASE USE THE PLAN AND SECTION DRAWINGS FOUND ON THE WEBSITE.

HOUSELIGHT DIMMERS	
191	197
192	198
193	199
194	200
195	201
196	202

HOUSELIGHTS CAN BE PATCHED TO THE CONSOLE OR CAN BE RUN FROM THE ETC UNISON HOUSELIGHT CONTROLLER



the ROYAL & MCPHERSON theatres society	
CIRCUIT LAYOUT 2014	
MCPHERSON PLAYHOUSE - FOH	
190 DIMMERS	
12 HOUSELIGHT DIMMERS	
LX PLOT: A. WILKINSON	2 OF 2
DIRECTOR:	
VENUE CAD: T. HEEMSKERK	
DRAWN BY: B. KEITH	
DATE: AUG. 26, 2014	
SCALE: 1/4" = 1'-0"	REVISION: