



COMPUTER AIDED DRAWING SOFTWARE POTENTIAL

A REVIEW OF INVENTOR, CREO, AND SOLIDWORKS

TEAM MEMBERS

AARON YEAGER

KENNY PECK

ASHLEIGH KRUCHESKY

JONATHAN OESTER

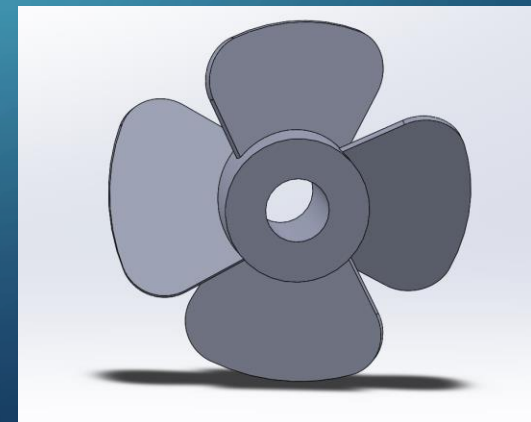
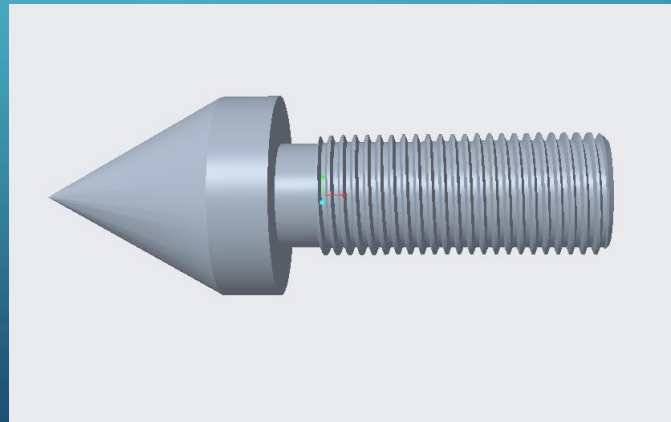
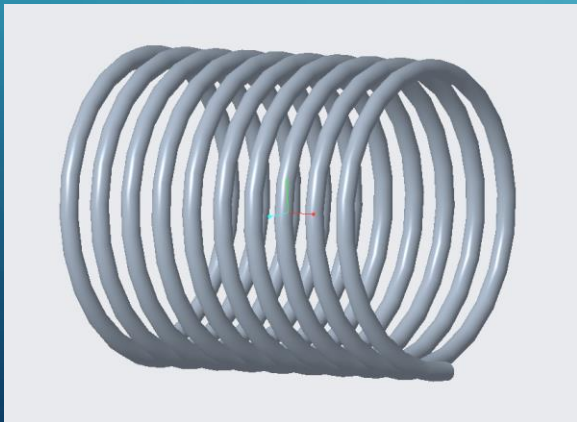
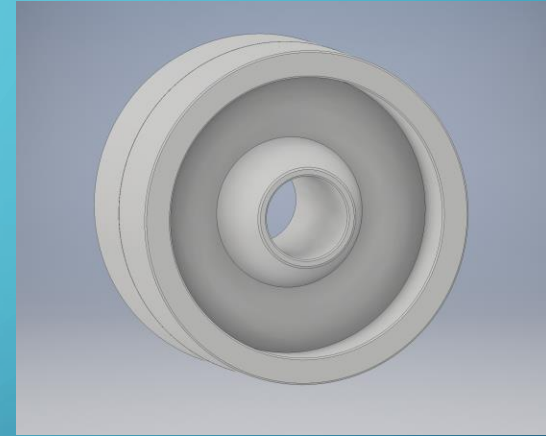
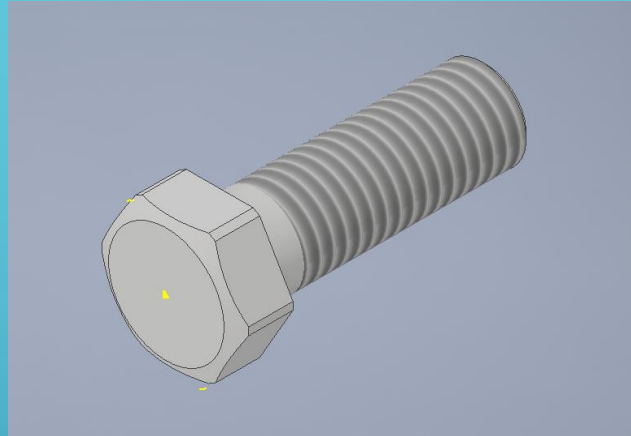
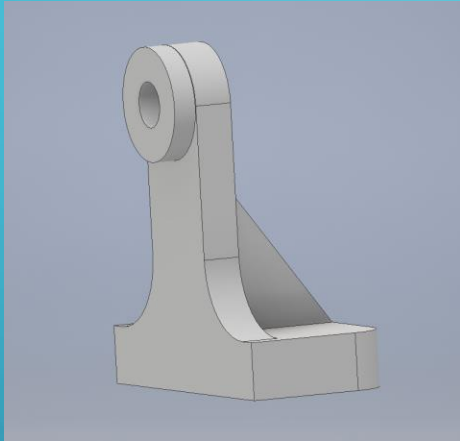
OVERVIEW

- Introduction
- Software
Review
- Animation
- Conclusion

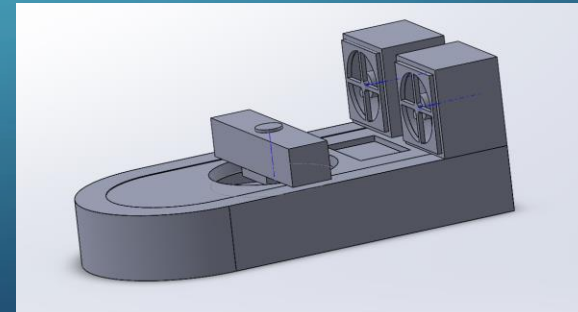
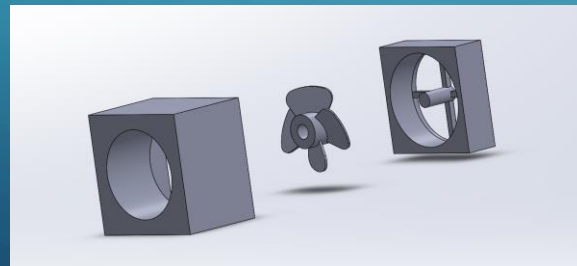
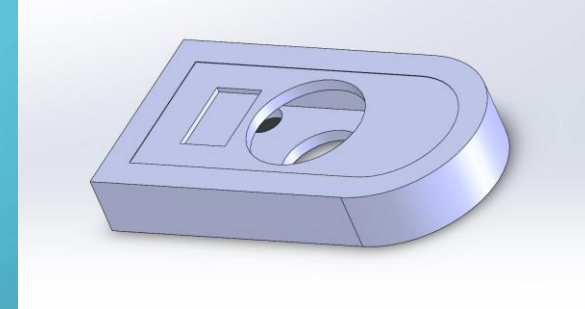
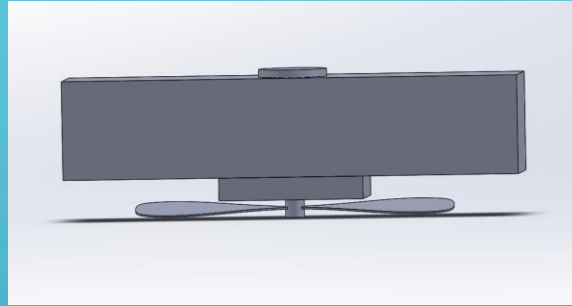
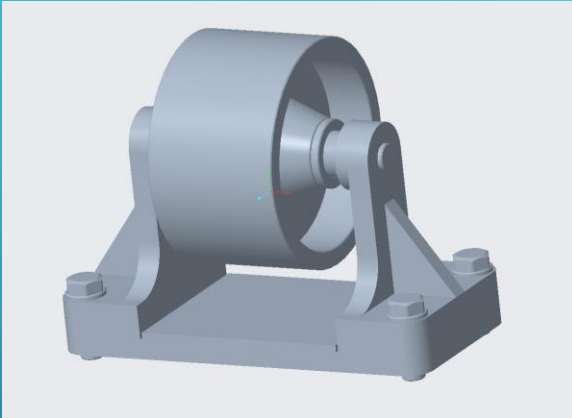
INTRODUCTION OF CAD SOFTWARE

- Inventor
- Creo
- Solidworks

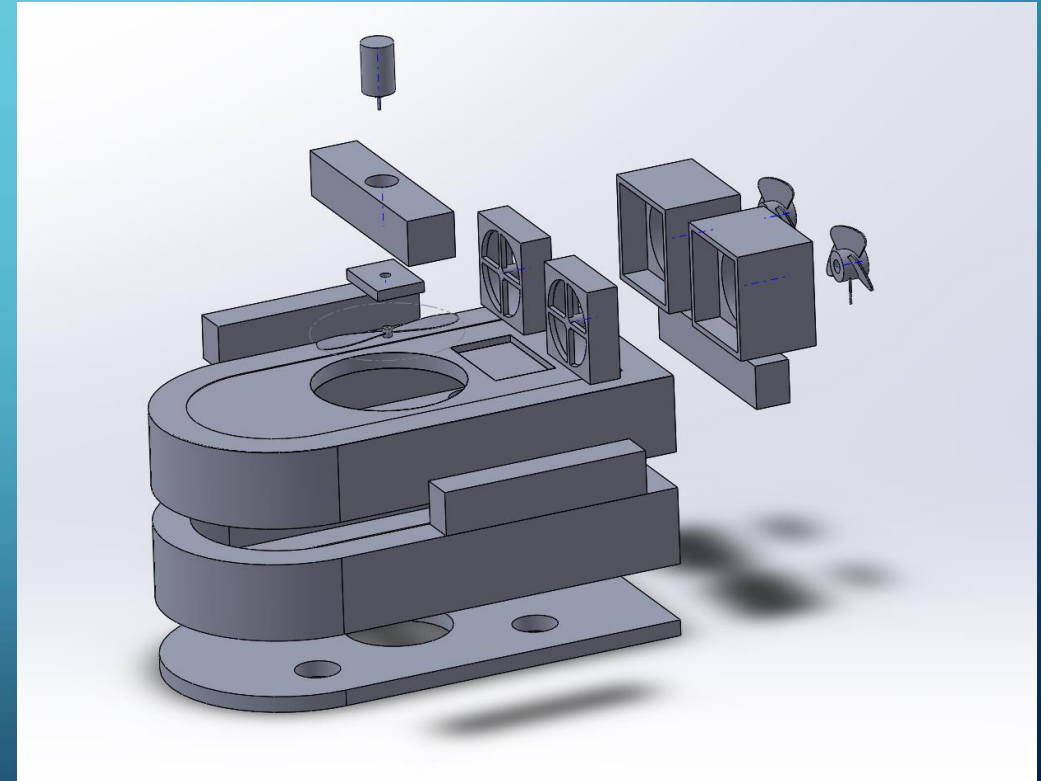
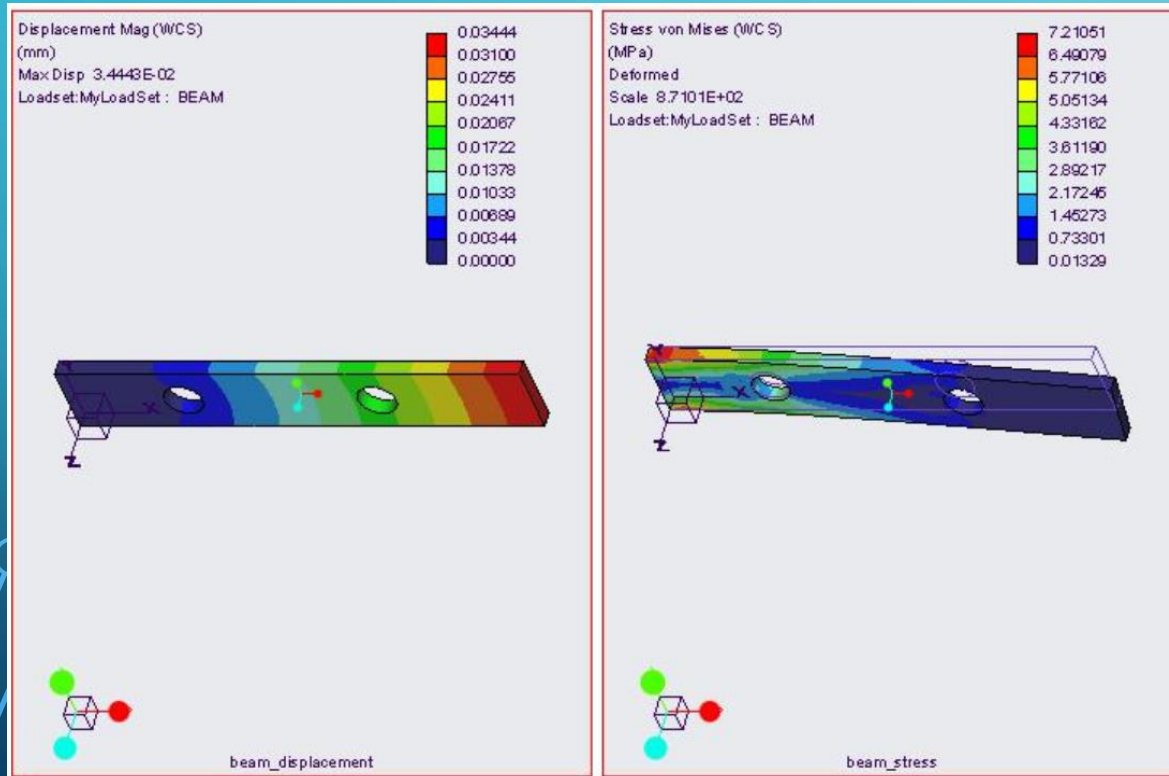
PARTS



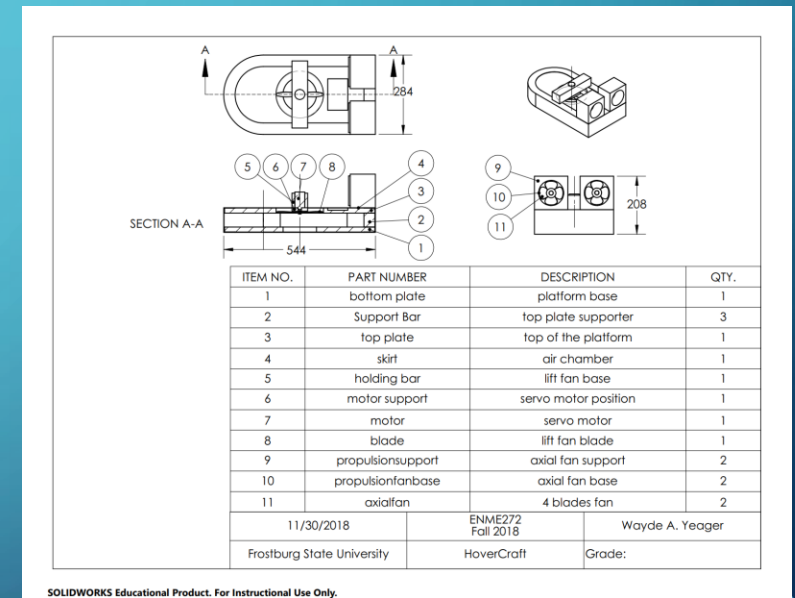
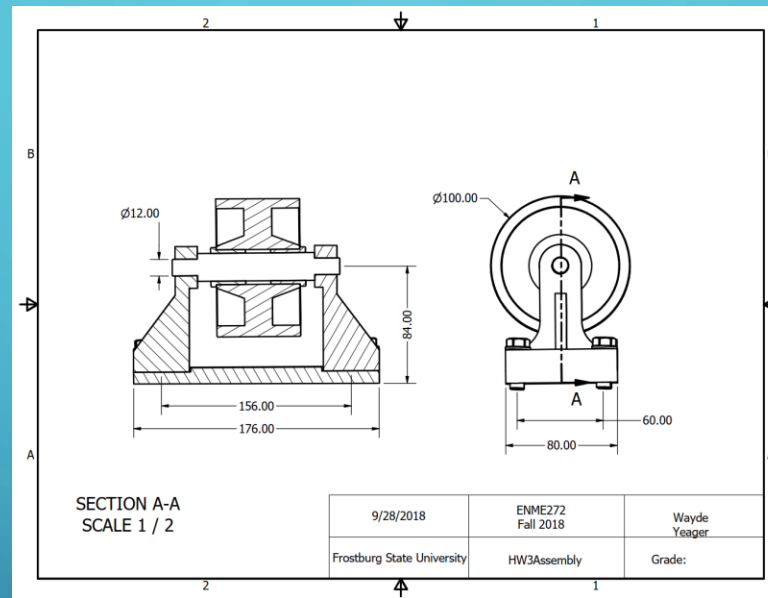
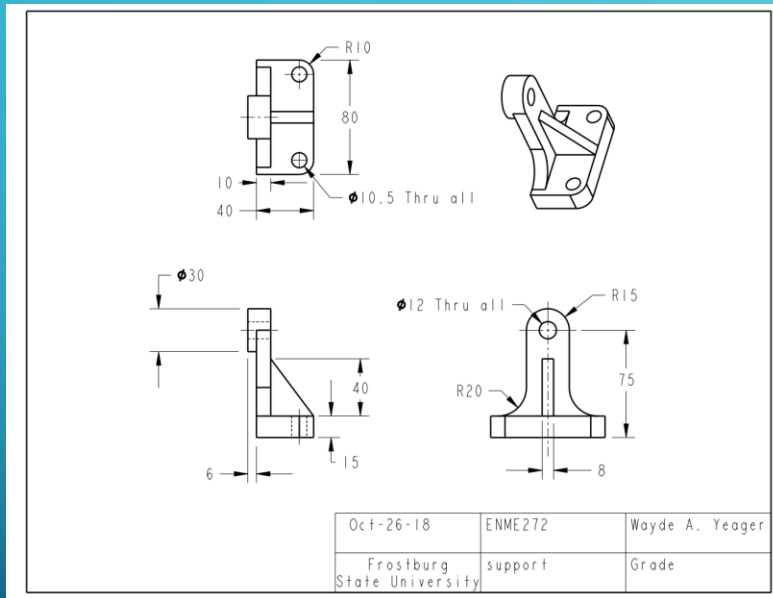
ASSEMBLIES



SIMULATIONS AND ANIMATION



DRAWINGS



PROS

Inventor

- Cost -Base price begins at \$1,900
- User friendly
- Creation of parts
- Preview of the part
- Dimensioning

CONS

Inventor

- Assembly
- Constraints
- Centerlines

PROS

Creo

- Software cost \$2300
- Capabilities of features
- Centerlines

CONS

Creo

- Not user friendly
- Beginning a sketch
- Material removal
- BOM table
- Editing features

PROS

SolidWorks

- Start menu
- Centerlines
- Features (mirroring, extruding, etc.)
- BOM tables
- Assembly

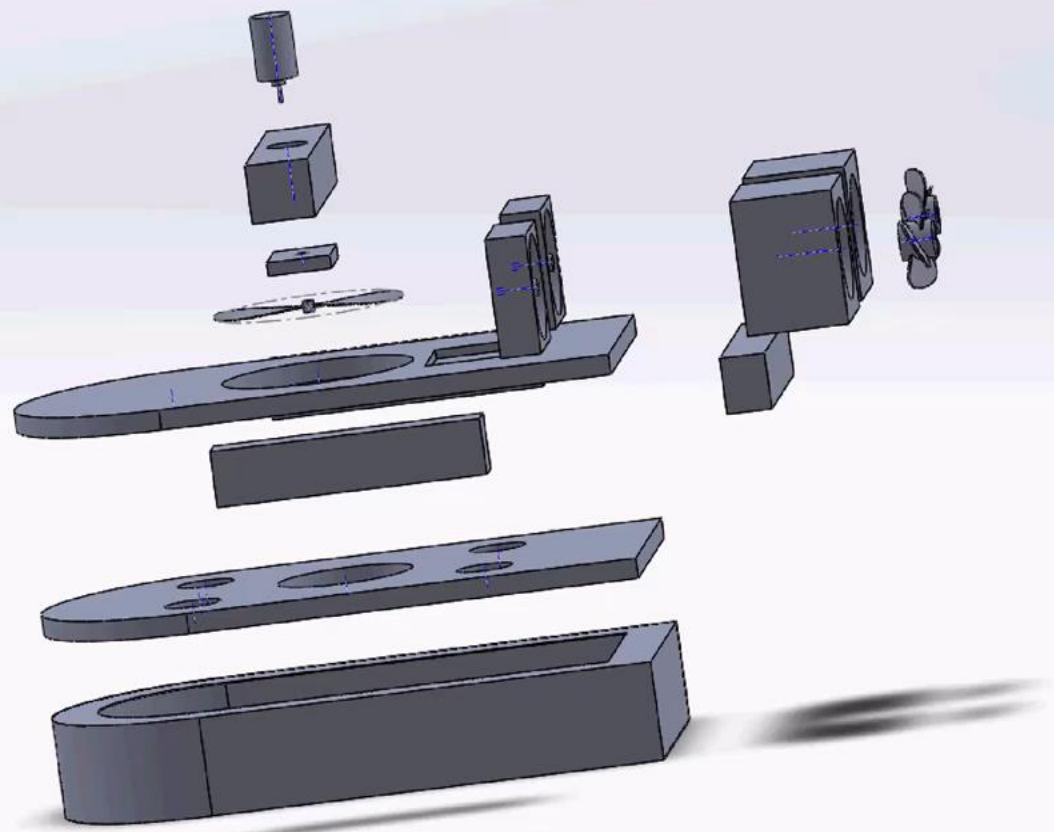
CONS

SolidWorks

- Saving animations
- Software cost —most expensive with a base price of \$5,000

APPLICATIONS AND IMPORTANCES

- Parts
- Assemblies
- Simulations
- Animations
- Drawings



IN CONCLUSION:

SOLIDWORKS

- User friendly
- Feature creation
- Drawing adjustments
- Assembly
- Cross-section
- BOM table

THANK YOU

Questions?