

FISCHER &
FRICHTEL



A Homebuilding Legacy Since 1945



ORCHARD COLLECTION

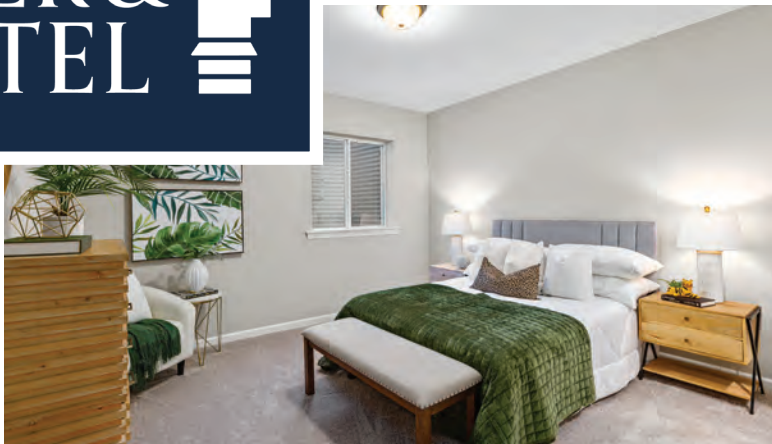
THE HIGHLAND RANCH

2 Beds | 2 Baths | 2 Car Garage | 1,492 sq ft

*The elevations on this brochure are an artist's conception and may vary slightly from actual construction.



FISCHER & FRICHTEL 



ORCHARD COLLECTION

THE HIGHLAND RANCH

2 Beds | 2 Baths | 2 Car Garage | 1,492 sq ft

FandFHomes.com



ORCHARD COLLECTION
THE HIGHLAND
RANCH

2 Beds | 2 Baths | 2 Car Garage | 1,492 sq ft



ELEVATION OPTIONS



Elevation I



Elevation II

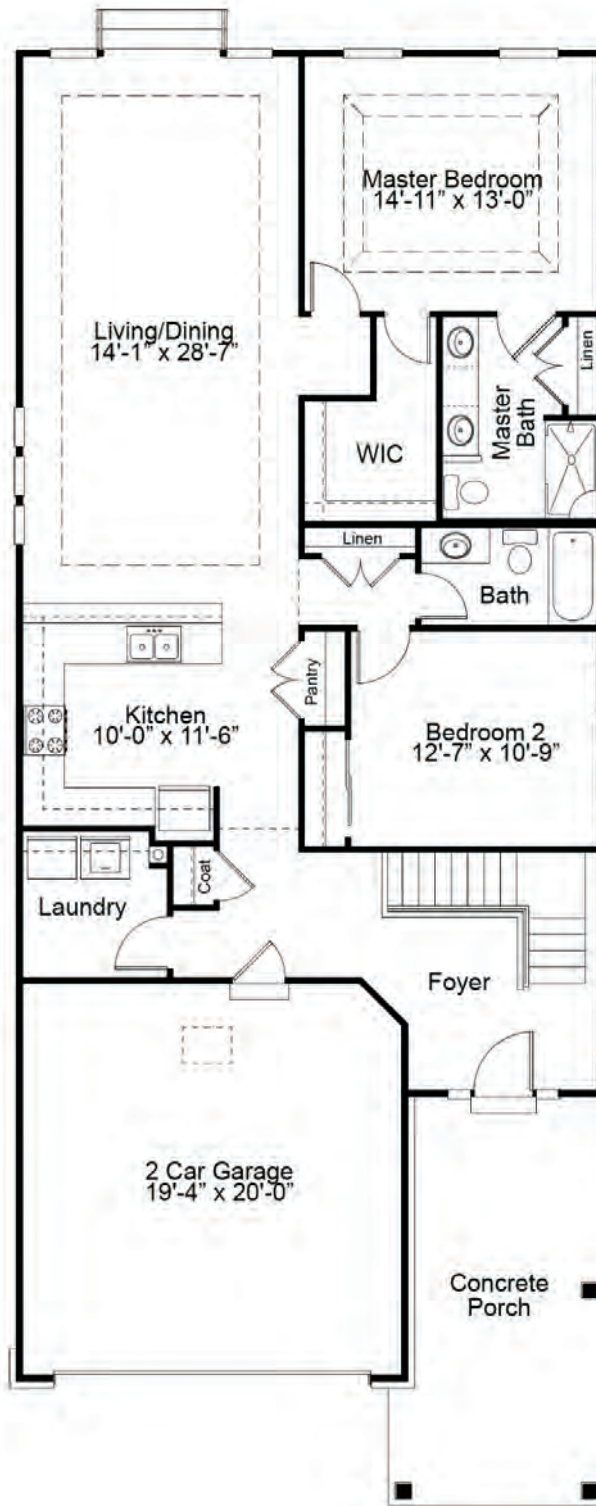


Elevation III



Please be sure to review actual blueprints with Community Sales Manager for complete details. Fischer & Frichtel Custom Homes has a policy of continuous improvements of products and reserves the right to make improvements or changes on products and prices without notice.

HIGHLAND FIRST FLOOR PLAN



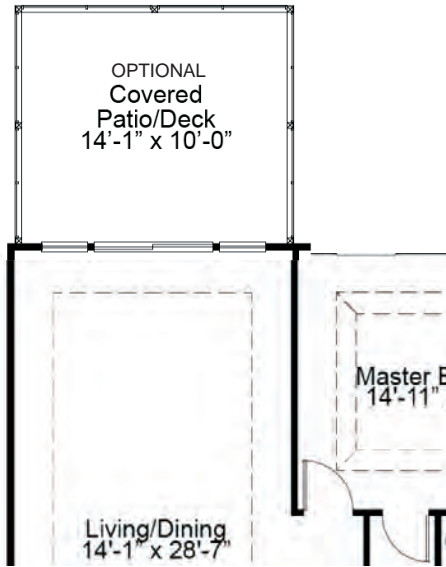
THE HIGHLAND

The Highland is a spacious villa-style ranch featuring 2 bedrooms and 2 baths. It has an open concept kitchen, dining and living room area, with a large master suite nestled at the rear of the home. With an impressive walk-in closet and spa-like bath, the master suite is truly a retreat. A covered deck or patio, gas fireplace, study and finished lower level are just a few of enhancement options available for this stunning home.

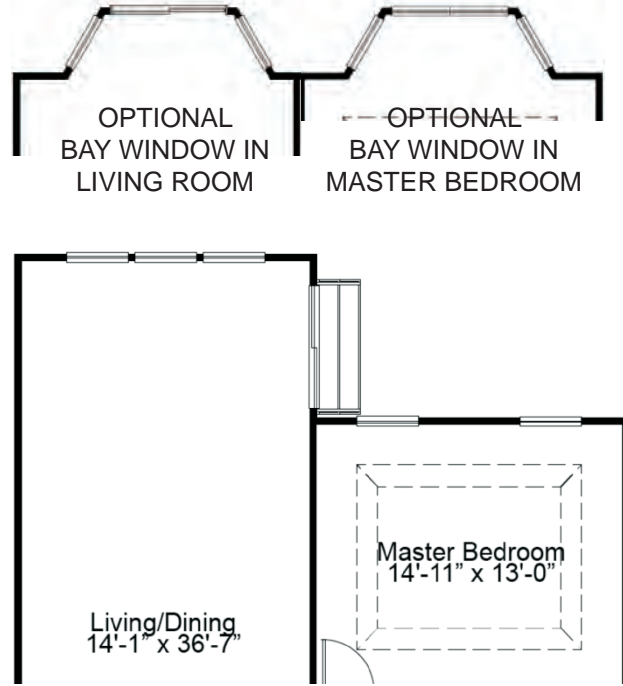


FandFHomes.com
Click on the Interactive Design Tool tab
to virtually explore your dream home

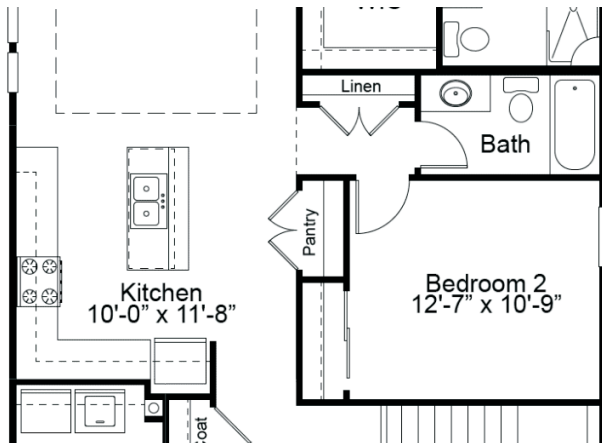
ENHANCEMENT OPTIONS



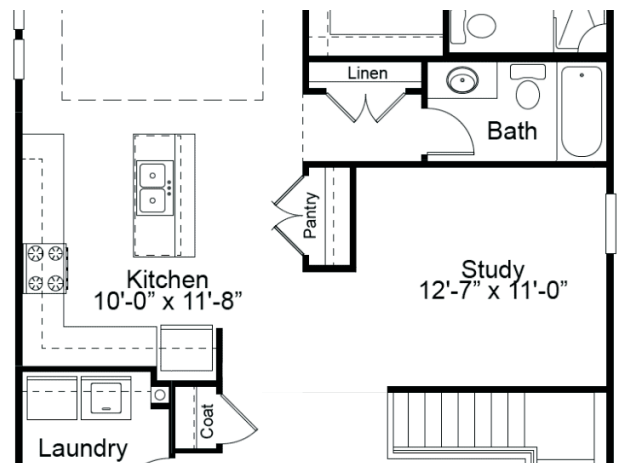
OPTIONAL COVERED DECK/PATIO



OPTIONAL EXPANDED LIVING ROOM

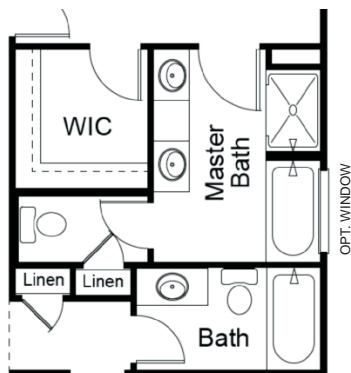


OPTIONAL KITCHEN LAYOUT

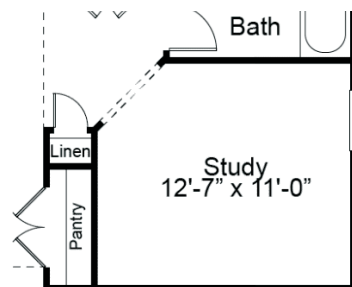


OPTIONAL STUDY ILO BEDROOM 2

OPTIONAL LUXURY MASTER BATH



OPTIONAL OPEN STUDY



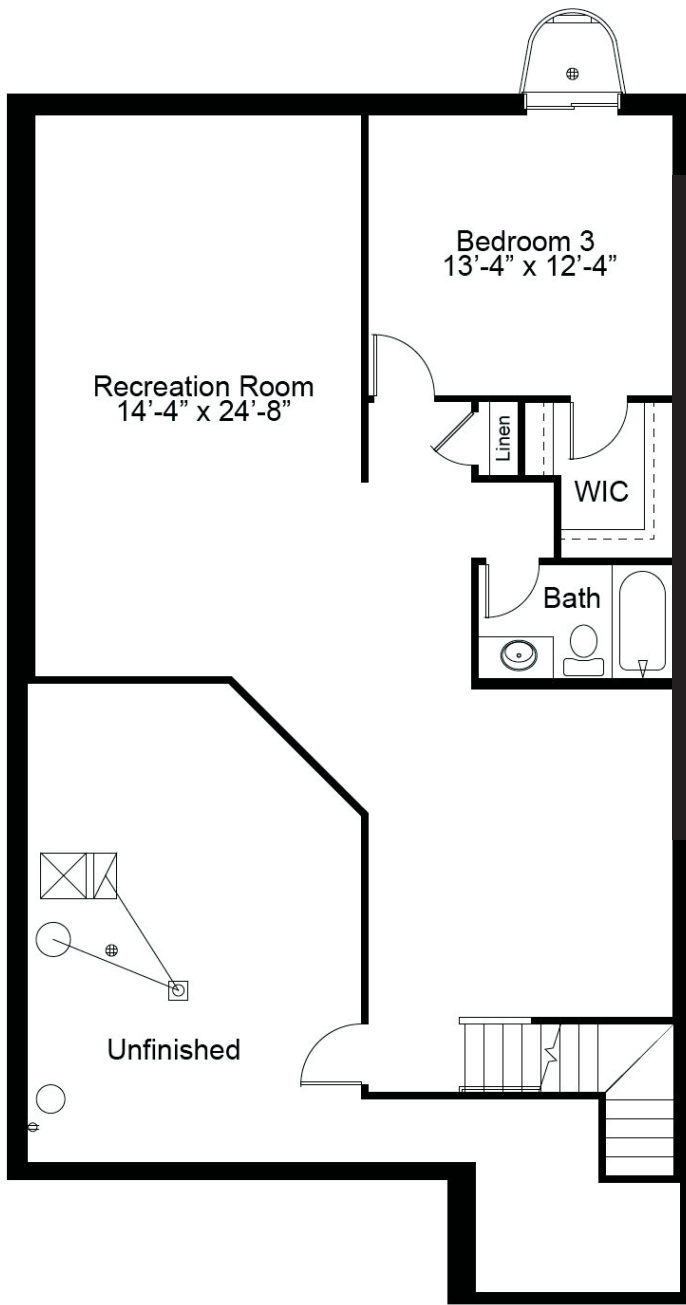


ORCHARD COLLECTION
THE HIGHLAND
RANCH

2 Beds | 2 Baths | 2 Car Garage | 1,492 sq ft



OPTIONAL FINISHED LOWER LEVEL



Floor plans may show options not included in the base price. All dimensions are approximate and may vary with elevation. Please be sure to review actual blueprints with Community Sales Manager for complete details. Fischer & Frichtel Custom Homes has a policy of continuous improvements of products and reserves the right to make improvements or changes on products and prices without notice.

REV 3-30-2026