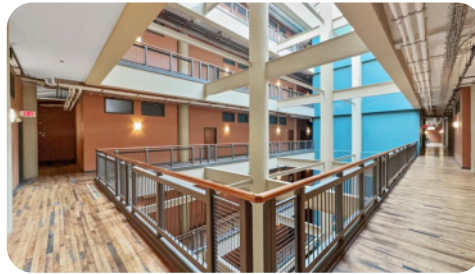


FOR SALE

1520 Washington Avenue #R511
St Louis 63103



2 Beds | 1 Bath | 1,186 Sqft | Offered at \$120,000

Experience the perfect blend of historic charm and modern living in this stunning 2-bedroom, 1-bath loft in the iconic 1906 Ely Walker building in Downtown St. Louis. Originally home to the Ely & Walker Dry Goods Company, this Classical Revival landmark was designed by the notable St. Louis firm Eames & Young and is part of the Washington Avenue Historic District. Its impressive brick and decorative terracotta façade set the tone for the character within. Soaring ceilings, expansive windows, and original hardwood floors create an open, airy feel, while exposed brick and ductwork add urban edge. From the living room, enjoy a view of the Gateway Arch—a daily reminder you're in the heart of the city. The living area flows into the kitchen with granite counters and a breakfast bar, ideal for casual dining or entertaining. Both bedrooms offer closet storage, and in-unit laundry adds convenience. Amenities include a rooftop deck with sweeping skyline views, clubhouse, fitness center, BBQ area, and secure garage parking. Walk to dining, nightlife, boutique shopping, City Museum, Cardinals baseball, Blues hockey, St. Louis City SC soccer, concerts, and festivals, with quick access to highways. HOA covers water, sewer, trash, parking, building insurance, and more. One assigned garage space included. Don't miss the immersive 3D Matterport tour—schedule your showing today! Perfect for those seeking a vibrant urban lifestyle surrounded by history and culture.



John Becker
REALTOR®

Direct: 636-206-9106
Broker: 636-442-0214
John@Magnolia.RealEstate
johnbecker.magnoliarealestatestl.com



Magnolia
REAL ESTATE