

fischer &
frichtel



A Homebuilding Legacy Since 1945



HERITAGE COLLECTION

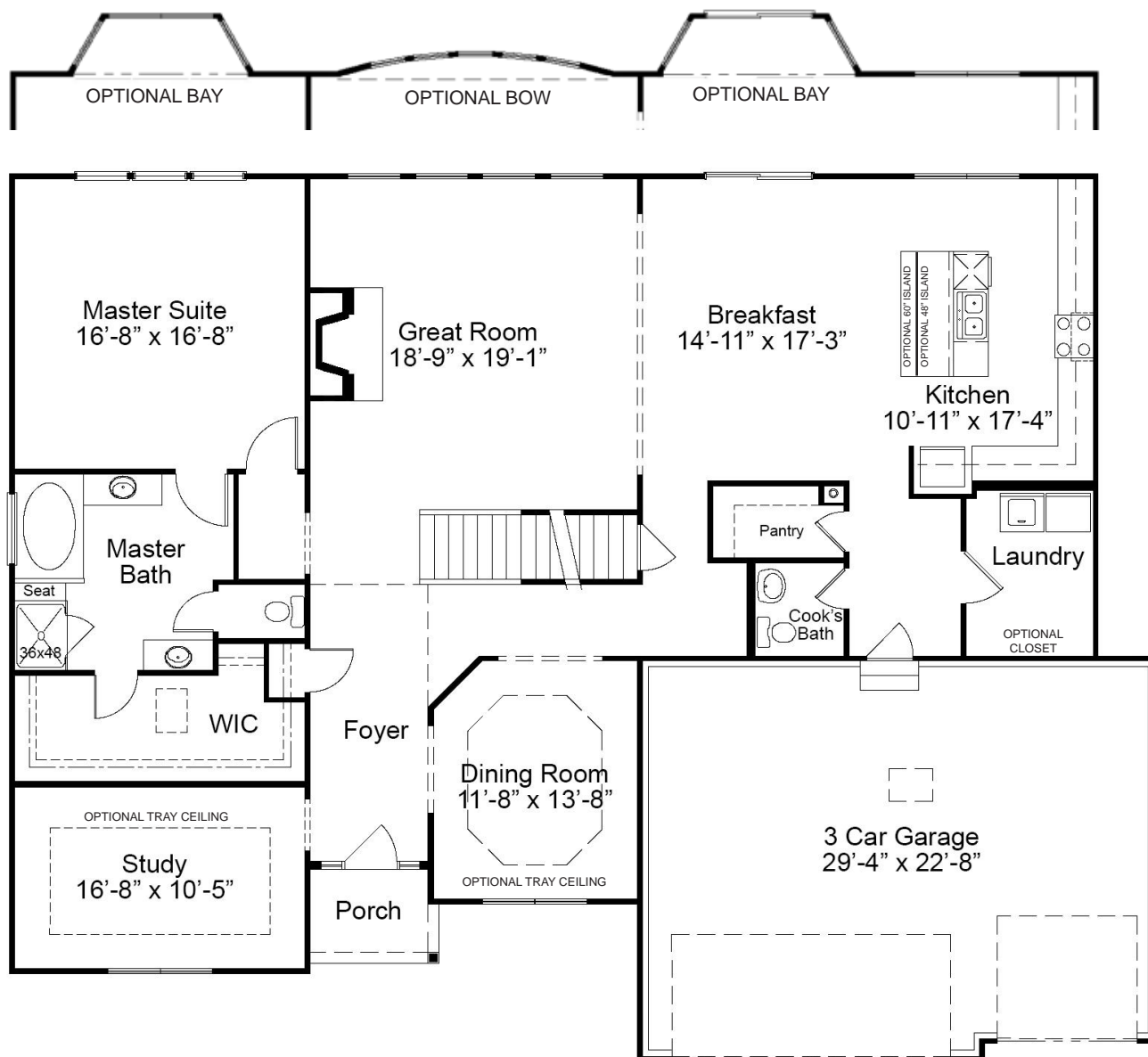
THE WYNDHAM

1.5-STORY

4 Beds | 3.5 Baths | 3 Car Garage | 3,752 sq ft

*The elevations on this brochure are an artist's conception and may vary slightly from actual construction.

WYNDHAM FIRST FLOOR PLAN



THE WYNDHAM

The Wyndham is a substantial 1.5-story home with a magnificent master suite on the main floor. The main floor also features an open concept kitchen, breakfast room and great room with fireplace, a formal dining room and study, laundry room, walk-in pantry and cook's bath. On the second floor, there are three more sizable bedrooms and a huge bonus room. Also included is a dual zoned HVAC. Options include a 2-story great room, hearth room and covered patio on the main floor, a finished lower level, and a princess suite, and Jack & Jill bath on the second floor.



FandFHomes.com

Click on the Interactive Design Tool tab
to virtually explore your dream home



HERITAGE COLLECTION
THE WYNDHAM
1.5-STORY

4 Beds | 3.5 Baths | 3 Car Garage | 3,752 sq ft

ELEVATION OPTIONS



Elevation I



Elevation II



Elevation III



Elevation IV



Elevation V



Elevation VI



Please be sure to review actual blueprints with Community Sales Manager for complete details. Fischer & Frichtel Custom Homes has a policy of continuous improvements of products and reserves the right to make improvements or changes on products and prices without notice.



HERITAGE COLLECTION

THE WYNDHAM

1.5-STORY

4 Beds | 3.5 Baths | 3 Car Garage | 3,752 sq ft

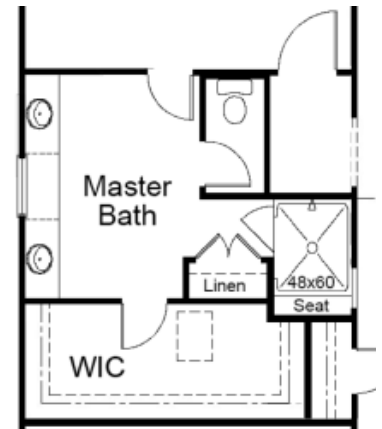
FIRST FLOOR ENHANCEMENT OPTIONS



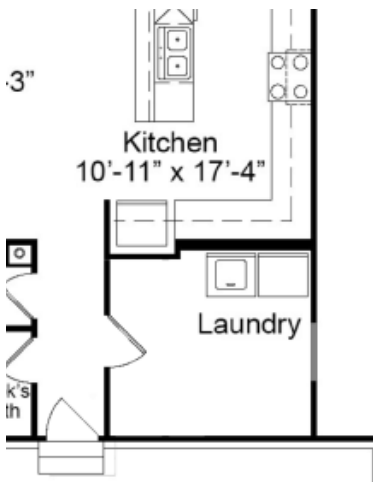
OPTIONAL LUXURY MASTER BATH



OPTIONAL SPA BATH 1



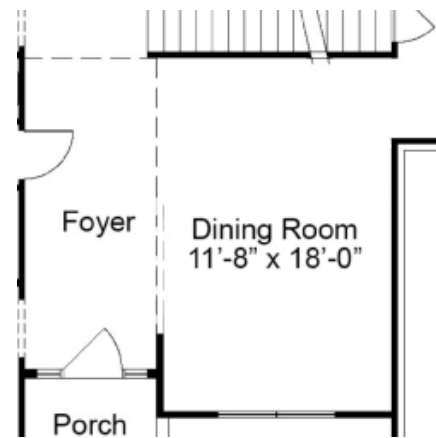
OPTIONAL SPA BATH 2



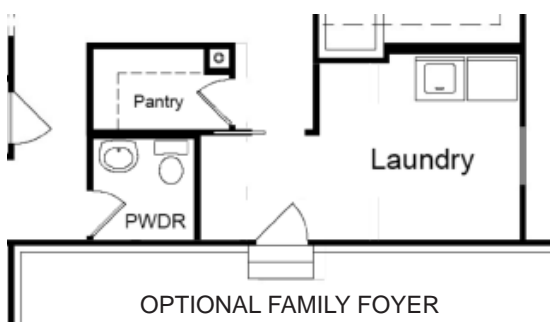
OPTIONAL EXTENDED LAUNDRY



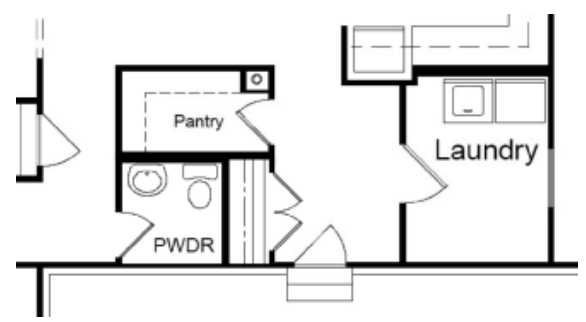
OPTIONAL HEARTH ROOM/
OPTIONAL COVERED PATIO



OPTIONAL OPEN DINING ROOM



OPTIONAL FAMILY FOYER



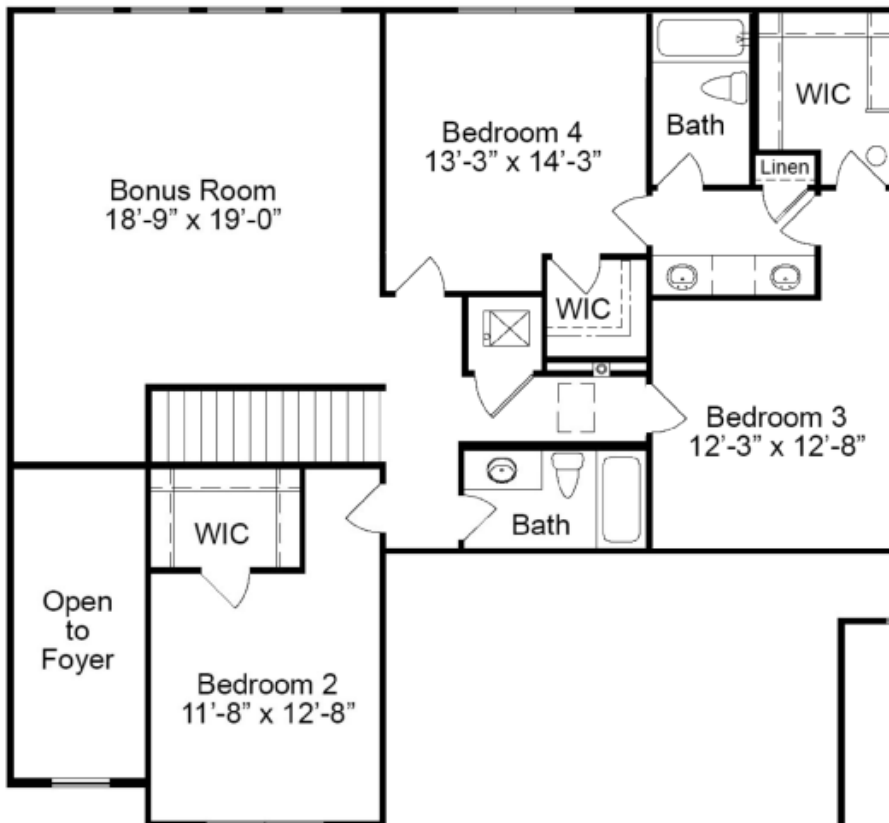
OPTIONAL POWDER ROOM



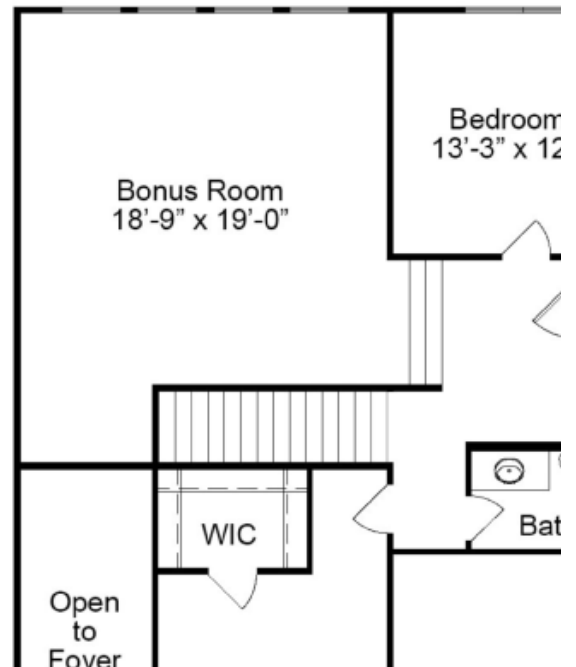
HERITAGE COLLECTION
THE WYNDHAM
1.5-STORY

4 Beds | 3.5 Baths | 3 Car Garage | 3,752 sq ft

SECOND FLOOR PLAN ENHANCEMENT OPTIONS

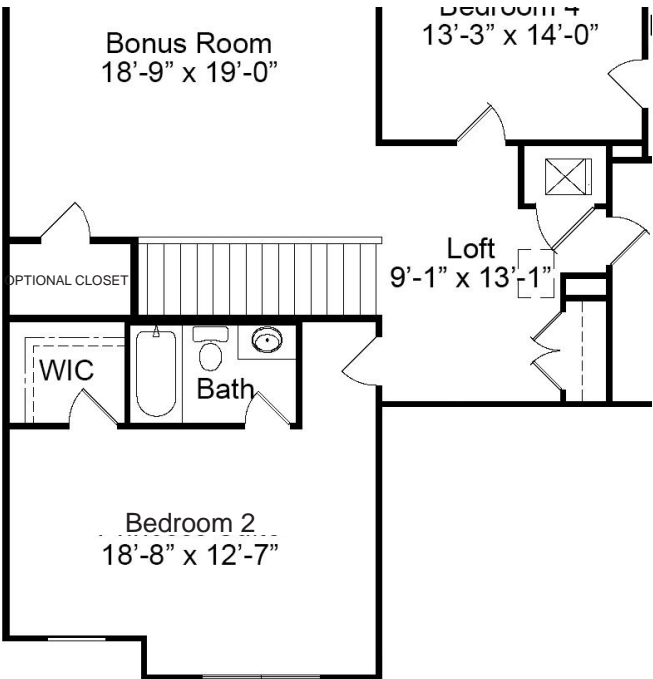
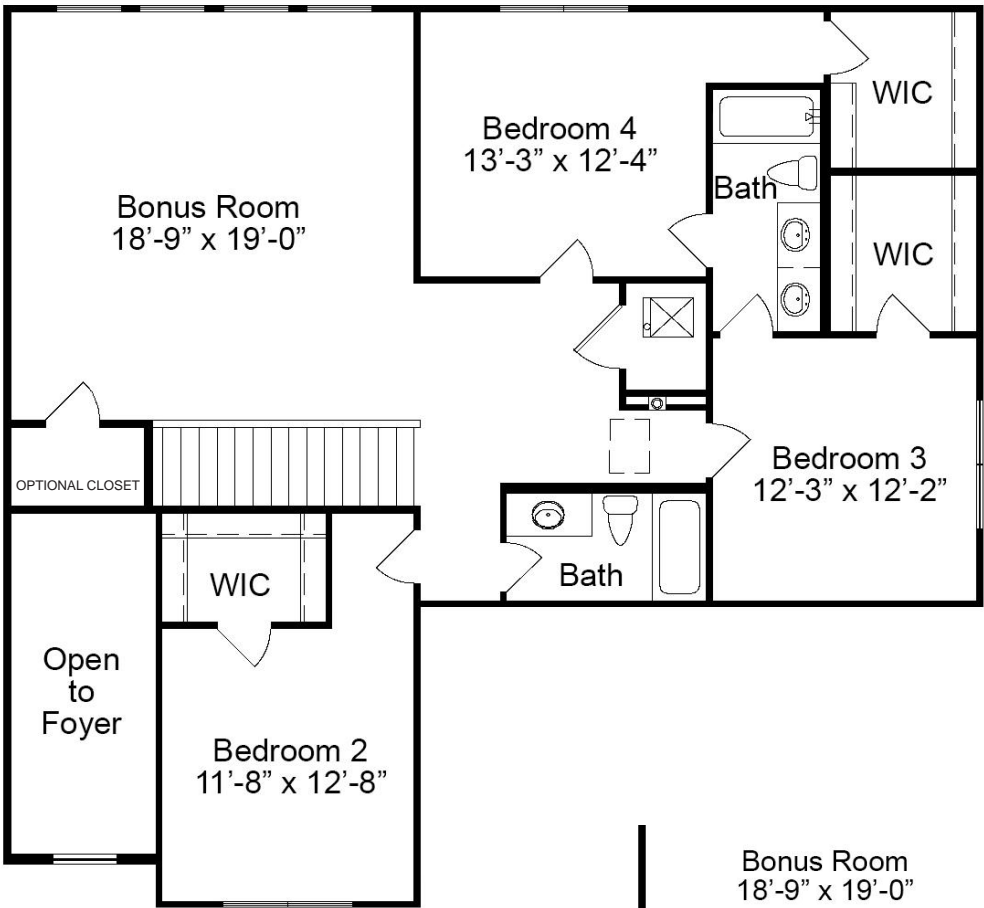


OPTIONAL JACK & JILL BATH



OPTIONAL STEP UP BONUS ROOM

WYNDHAM SECOND FLOOR PLAN



OPTIONAL SECONDARY
BEDROOM SUITE W/ BATH

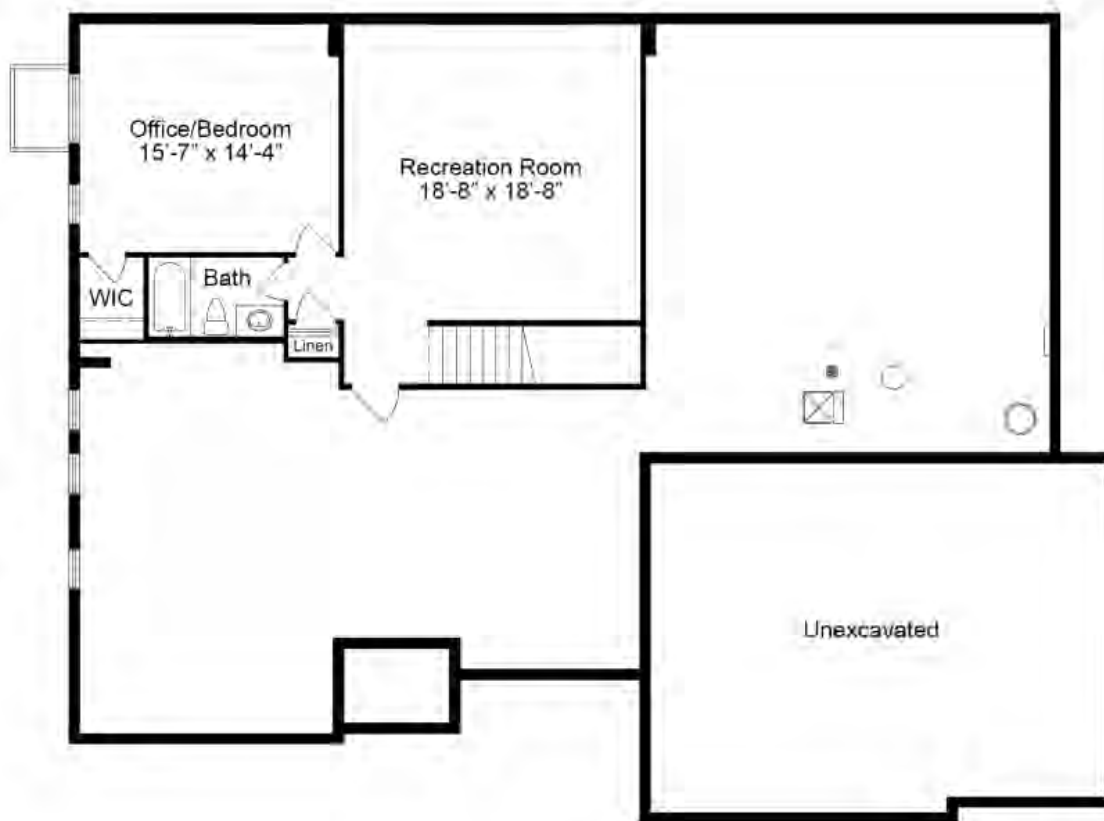
**fischer &
frichtel**

A Homebuilding Legacy Since 1945

HERITAGE COLLECTION
THE WYNDHAM
1.5-STORY

4 Beds | 3.5 Baths | 3 Car Garage | 3,752 sq ft

WYNDHAM OPTIONAL FINISHED LOWER LEVEL



Floor plans may show options not included in the base price. All dimensions are approximate and may vary with elevation. Please be sure to review actual blueprints with Community Sales Manager for complete details. Fischer & Frichtel Custom Homes has a policy of continuous improvements of products and reserves the right to make improvements or changes on products and prices without notice.

REV 5-11-2022