

GLADYS
MANION
REAL ESTATE

WHITEHALL
710

710 S. Hanley Road #17C | Clayton



A very rare opportunity to purchase a nearly 4,000 sq. ft. penthouse in the sky on the 17th floor of the prestigious Whitehall Club. Sweeping North, East & West views/exposures PLUS a very rare private balcony (22' x 6')! Generously-sized principal rooms are light-filled with city views which could make for an easy transition if you're moving from a large home/estate. Spacious & light-filled, the floor plan is very flexible with multiple options on how to live your daily life. AMAZING primary suite (35' x 22') with unparalleled views, PLUS, a 900 +/- bottle wine cellar right in your own home and a very epicurian chef's kitchen with high-end, stainless steel appliances. The building offers a 24-Hour doorman, Community Manager, lovely pool & spa, fitness room, lending library, a community room, guest suites & garage attendants. Don't miss this opportunity to purchase this "blank canvas" condominium in this sought-after building with unbelievable square footage & stunning views in the heart of Clayton.



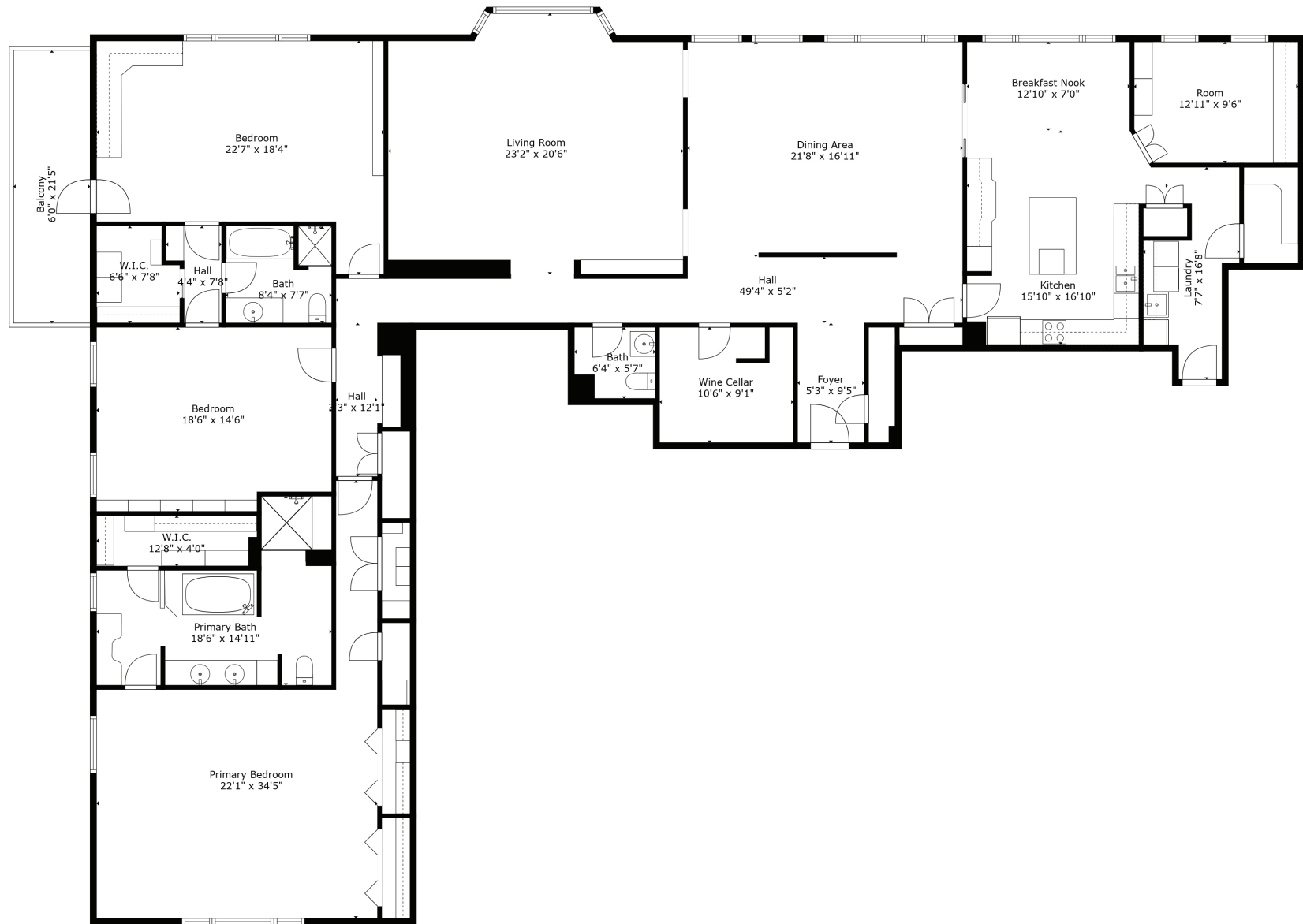


keith r manzer
& ASSOCIATES
 ESTABLISHED 1983

314.609.3155
KeithRManzer.com

GLADYS MANION
 REAL ESTATE

Locally Owned and Operated Since 1936
314-721-4755 | gladysmanion.com



TOTAL: 3416 sq. ft

FLOOR 1: 3416 sq. ft

EXCLUDED AREAS: WINE CELLAR: 96 sq. ft, BALCONY: 129 sq. ft

WALLS: 178 sq. ft

Floor Plan Created By Cubicasa App. Measurements Deemed Highly Reliable But Not Guaranteed.