

fischer & frichtel **4**

A Homebuilding Legacy Since 1945



COTTAGE COLLECTION

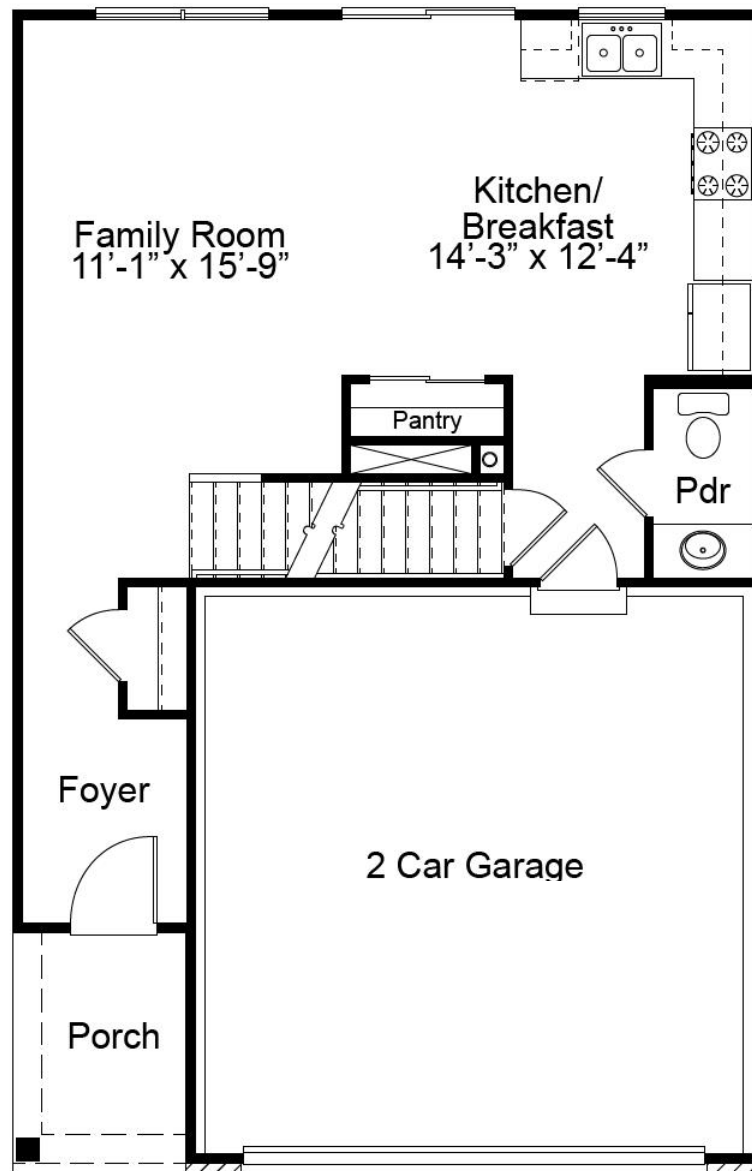
THE WINDSOR

2-STORY

3 Beds | 2.5 Baths | 2 Car Garage | 1,422 sq ft

*The elevations on this brochure are an artist's conception and may vary slightly from actual construction.

WINDSOR FIRST FLOOR PLAN



THE WINDSOR

The Windsor is a 2-story plan with 3 bedrooms and 2.5 baths. The main floor living area features an open concept kitchen, dining and living room and a powder room—making it the perfect spot for family time and entertaining. The second floor features a spacious master suite with walk-in closet, an open loft area, two additional bedrooms and a shared hall bath. For additional convenience, there is an optional second floor laundry.



FandFHomes.com

Click on the Interactive Design Tool tab
to virtually explore your dream home

ELEVATION OPTIONS



Base Elevation



Elevation I



Elevation II



Elevation III



Elevation IV



Modern I



Modern II

fischer & frichtel

A Homebuilding Legacy Since 1945

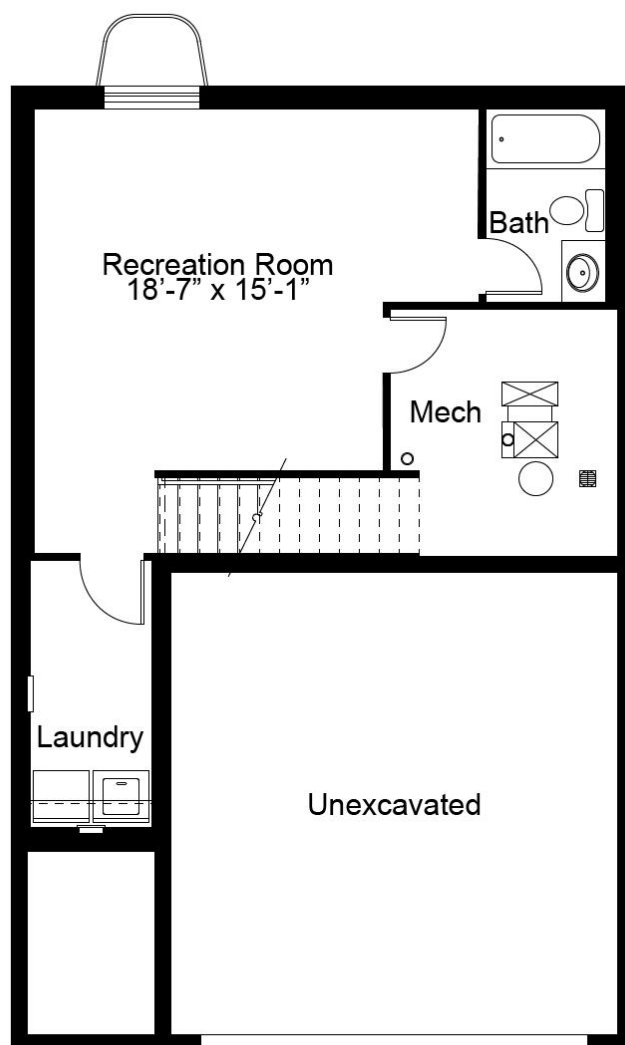
COTTAGE COLLECTION

THE WINDSOR

2-STORY

3 Beds | 2.5 Baths | 2 Car Garage | 1,422 sq ft

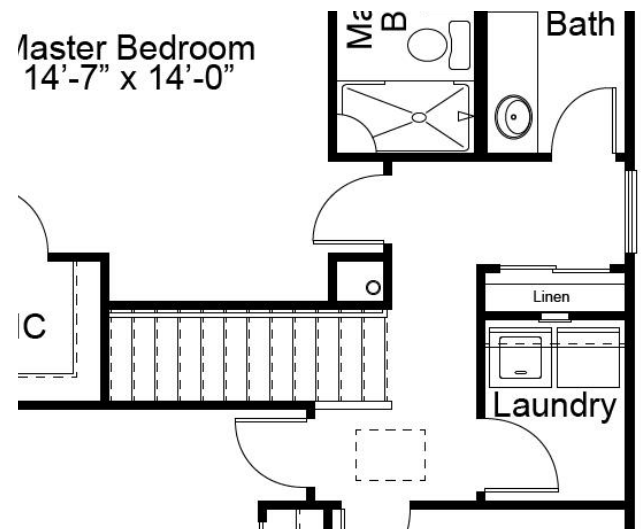
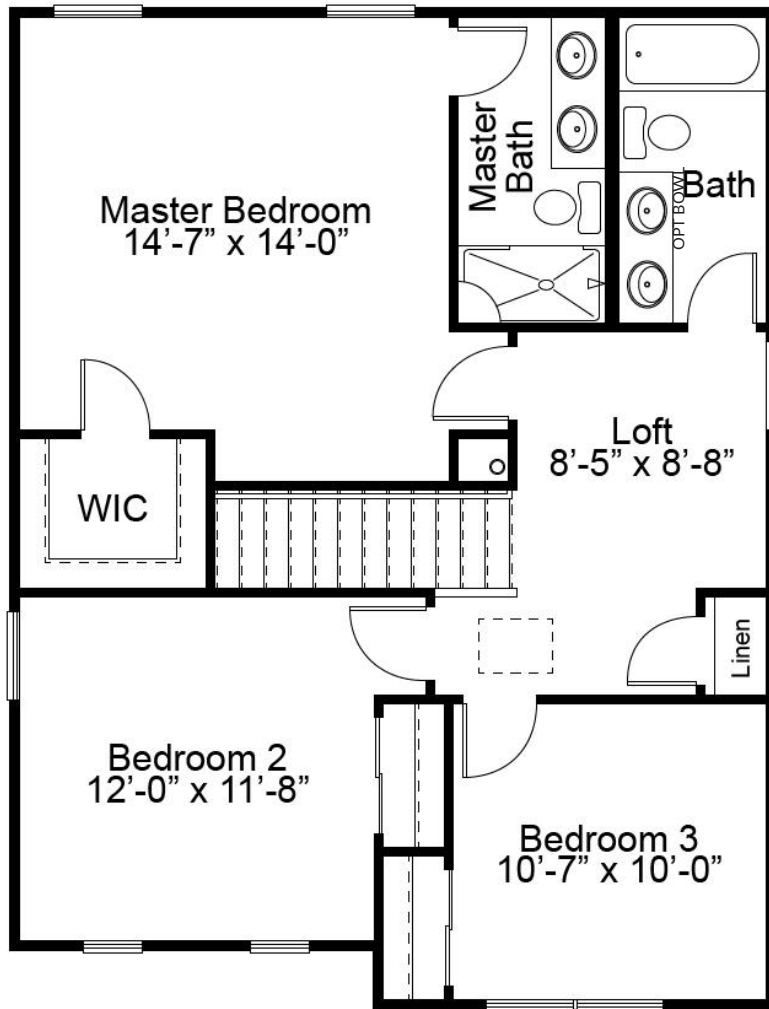
WINDSOR OPTIONAL FINISHED LOWER LEVEL



Floor plans may show options not included in the base price. All dimensions are approximate and may vary with elevation. Please be sure to review actual blueprints with Community Sales Manager for complete details. Fischer & Frichtel Custom Homes has a policy of continuous improvements of products and reserves the right to make improvements or changes on products and prices without notice.

REV 10-25-2021

WINDSOR SECOND FLOOR PLAN



OPTIONAL SECOND FLOOR LAUNDRY