

## How to Upgrade Firmware of the Camera?

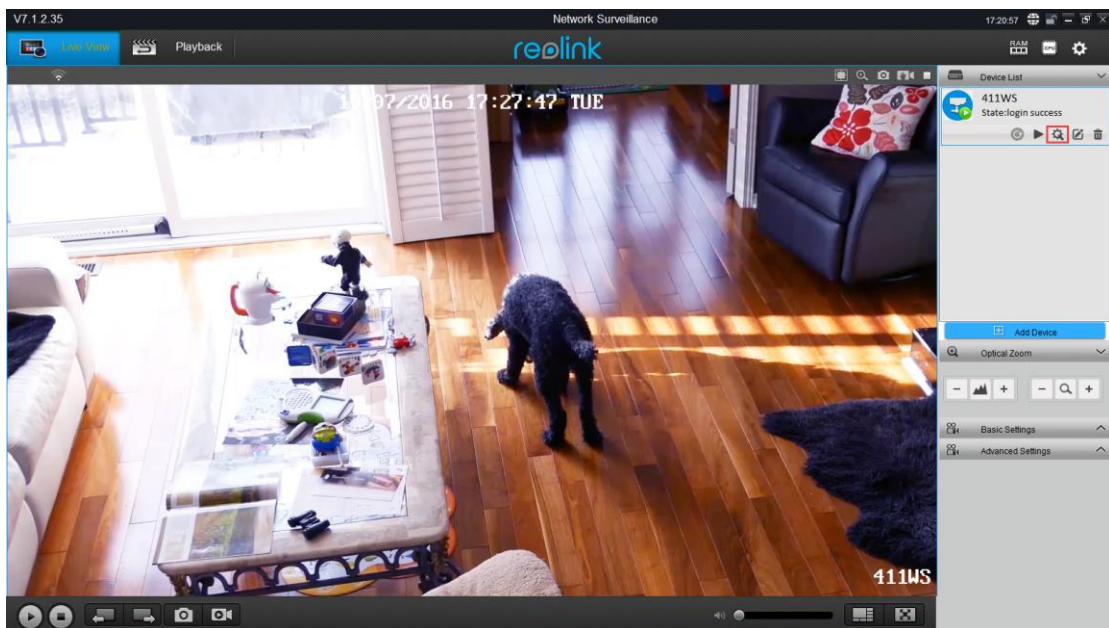
Firmware Display Version: 842\_17052407

New Firmware Filename:

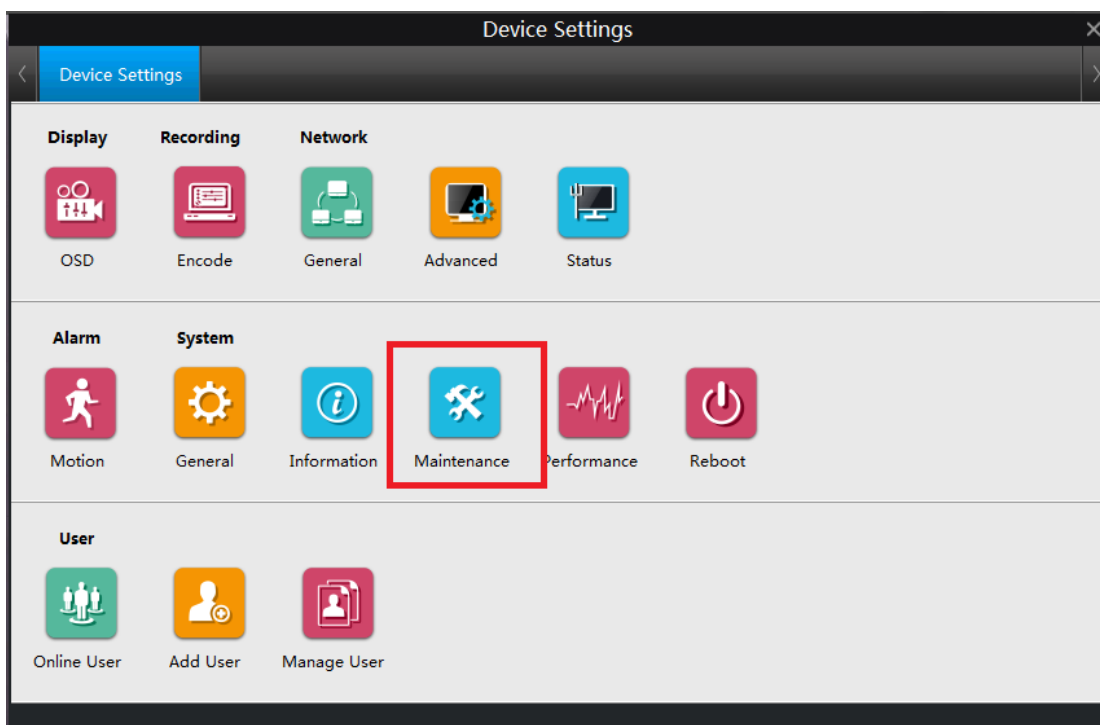
IPC\_3816M.842\_17052407.RLC-411WS.ov4689.4MP.WIFI.AF.REOLINK

### Instructions:

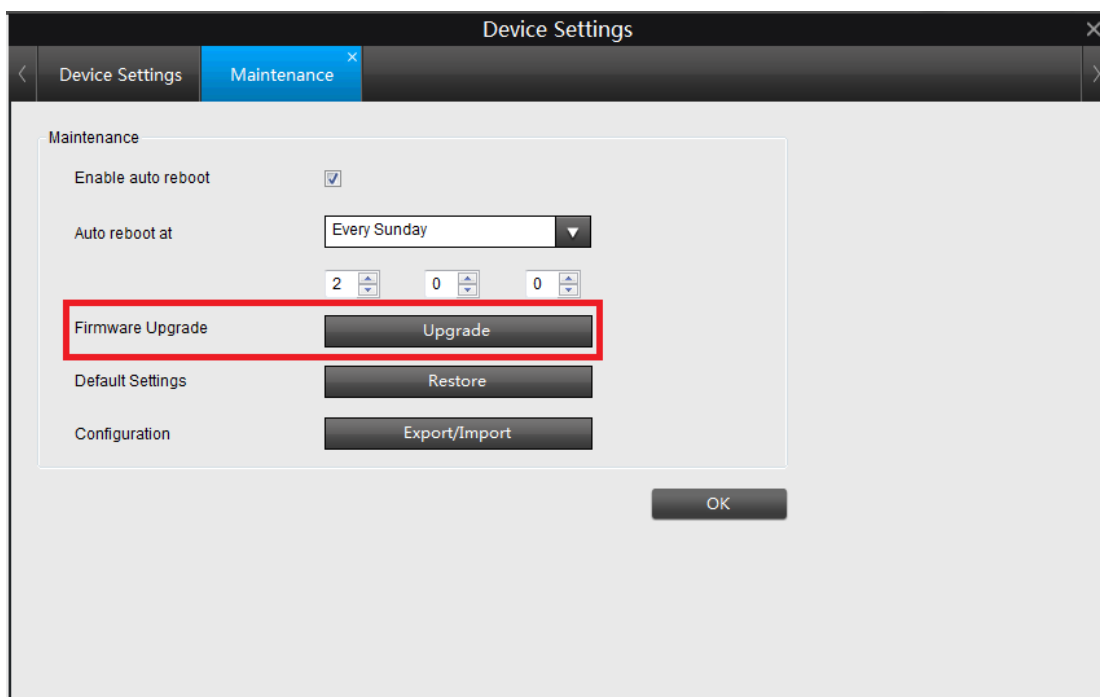
1. Download the New Firmware Files from the Reolink Website.  
<https://reolink.com/firmware/>
2. Ensure that you have saved the correct Firmware Files to your computer (Please check your Camera Model).
3. Extract the zipped File. It will contain 2 Sub Files (PDF File and a .PAK file).
4. Open the Reolink Client software then select the camera that you want to upgrade.
5. Click Device Settings.



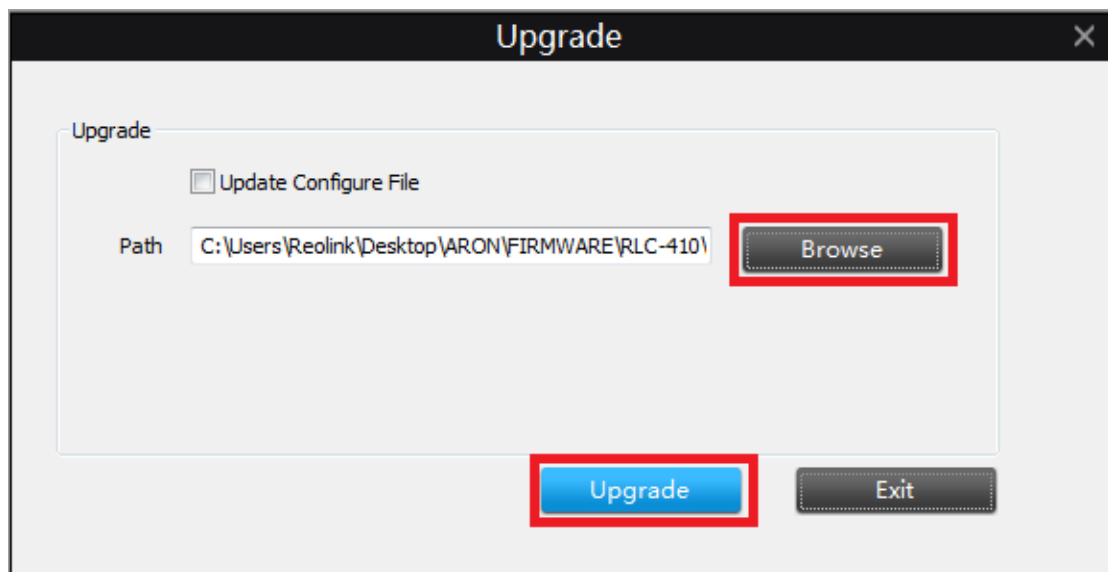
6. In the Device Settings Page, Click 'Maintenance' Tab.



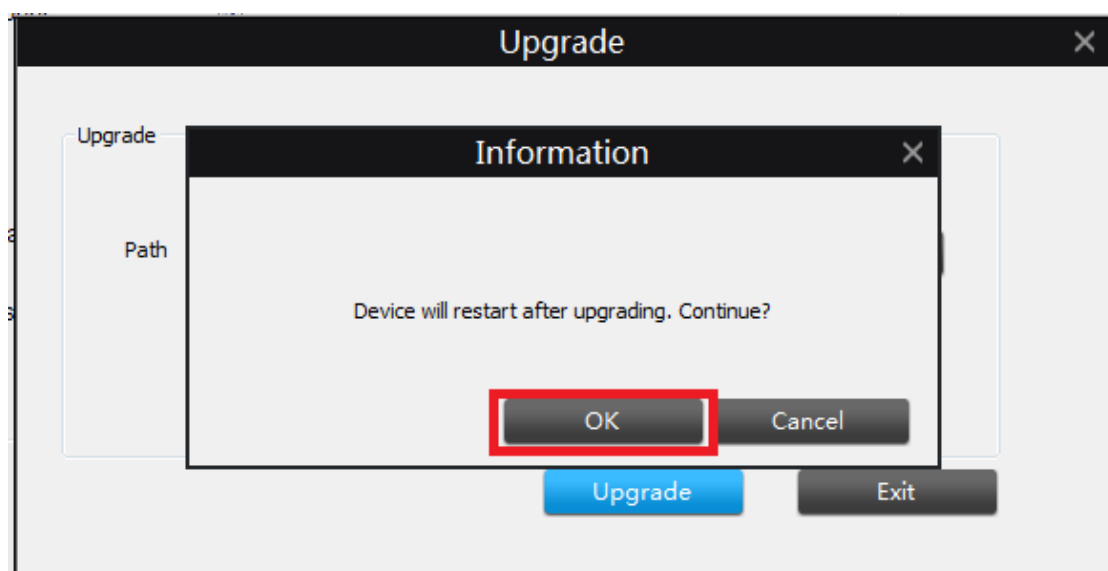
7. On Firmware Upgrade, click Upgrade.



8. Click browse, and select the Firmware File (.PAK File) from your computer. Please do not check "Upgrade Configure File" in order to avoid losing the Wi-Fi connection after upgrading.

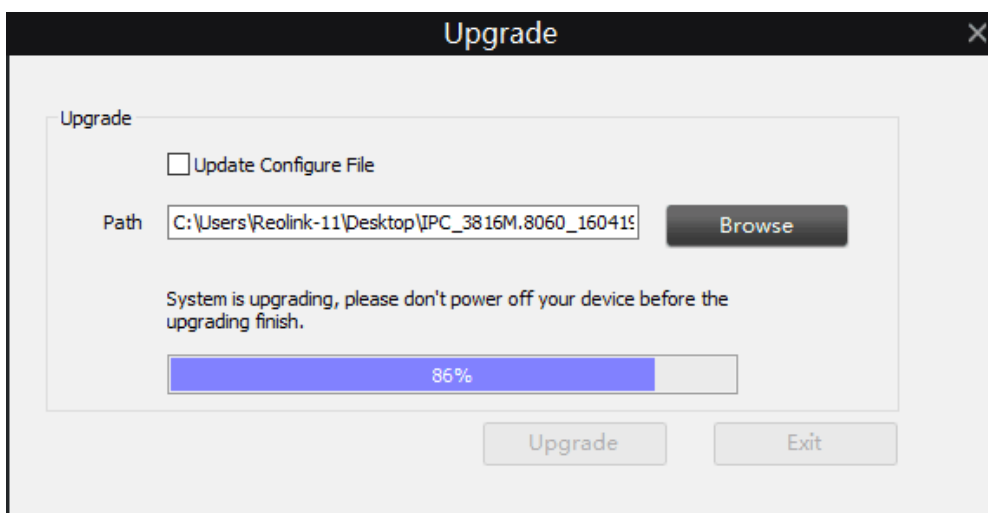


9. Click OK.

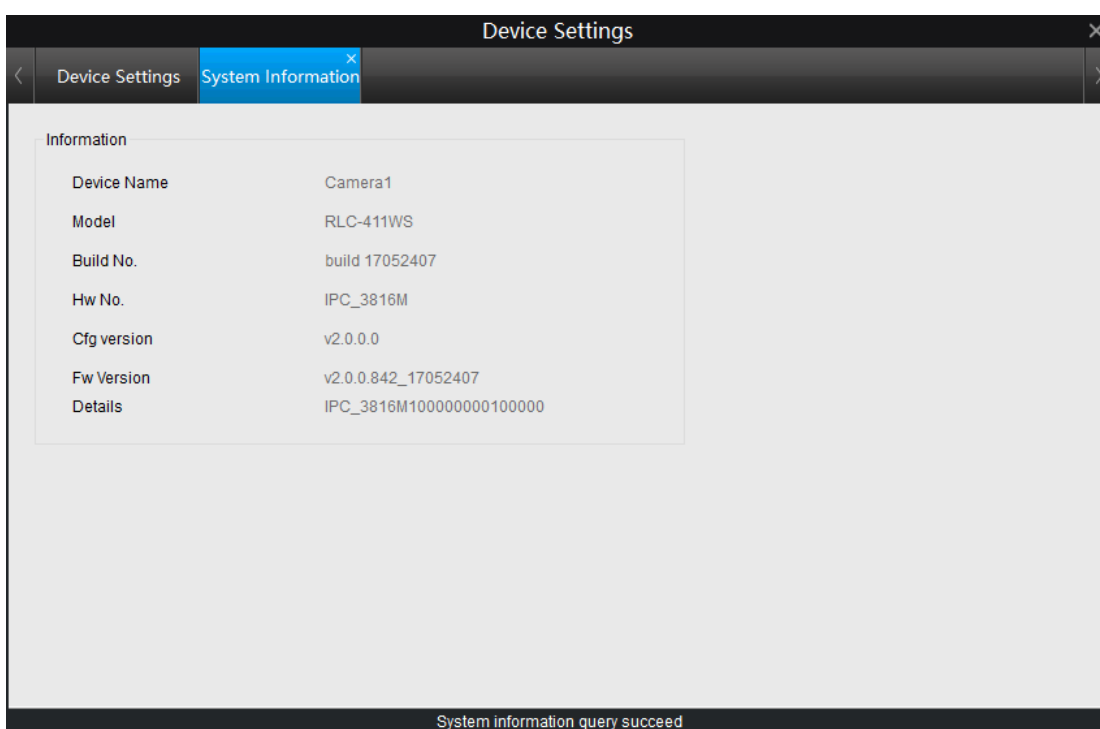


10. Device is now upgrading, please wait until it is completed.



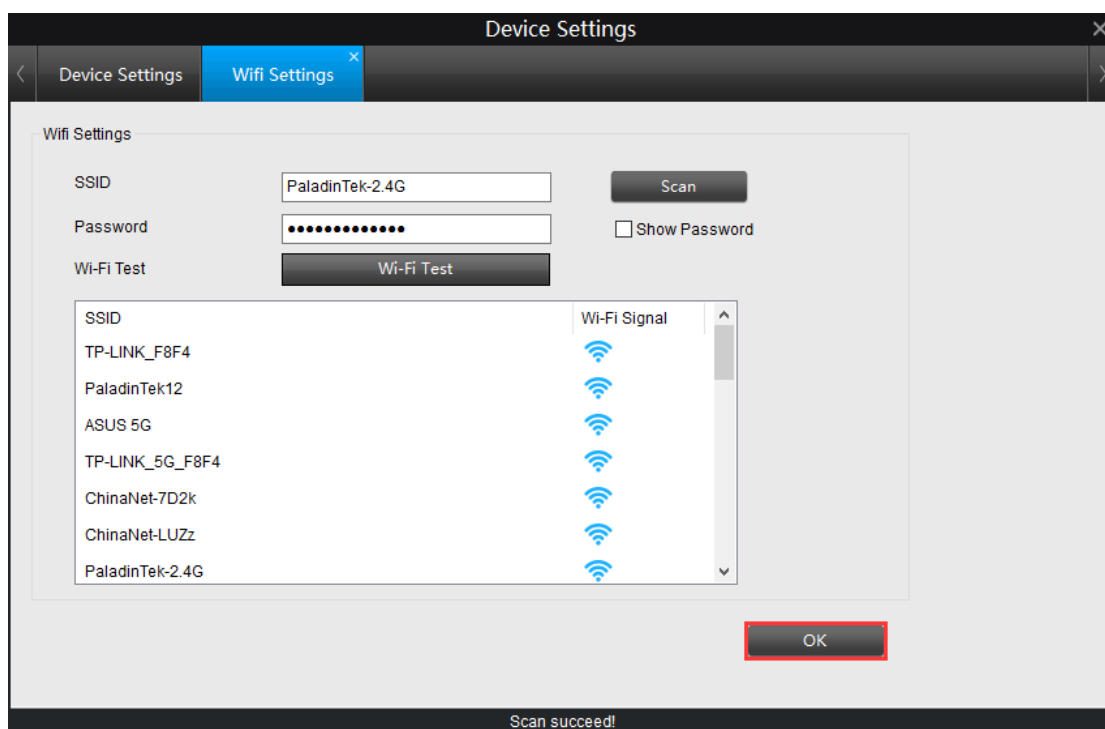


11. Check the New Firmware Version if successful.  
Click on Device Settings, then select System > Information..



12. After successfully upgrade the firmware, please go to Device Settings > Network > Wi-Fi Settings. Click on the OK button to keep the Wi-Fi settings written into this firmware.





13. Then go to Device Settings > System > Maintenance, click on Restore to reset the camera to factory default settings.

