

Land Available

701 N. Green Street
Henderson, KY 42420



COMMERCIAL

Demographics: (5 mile radius)

2010

Population: 31,978
Households: 13,353

2018

Population: 31,998
Households: 13,414
Average Income: \$58,338

2023

Population: 31,885
Households: 13,372
Average Income: \$67,973

Contact:

Mike Richardson

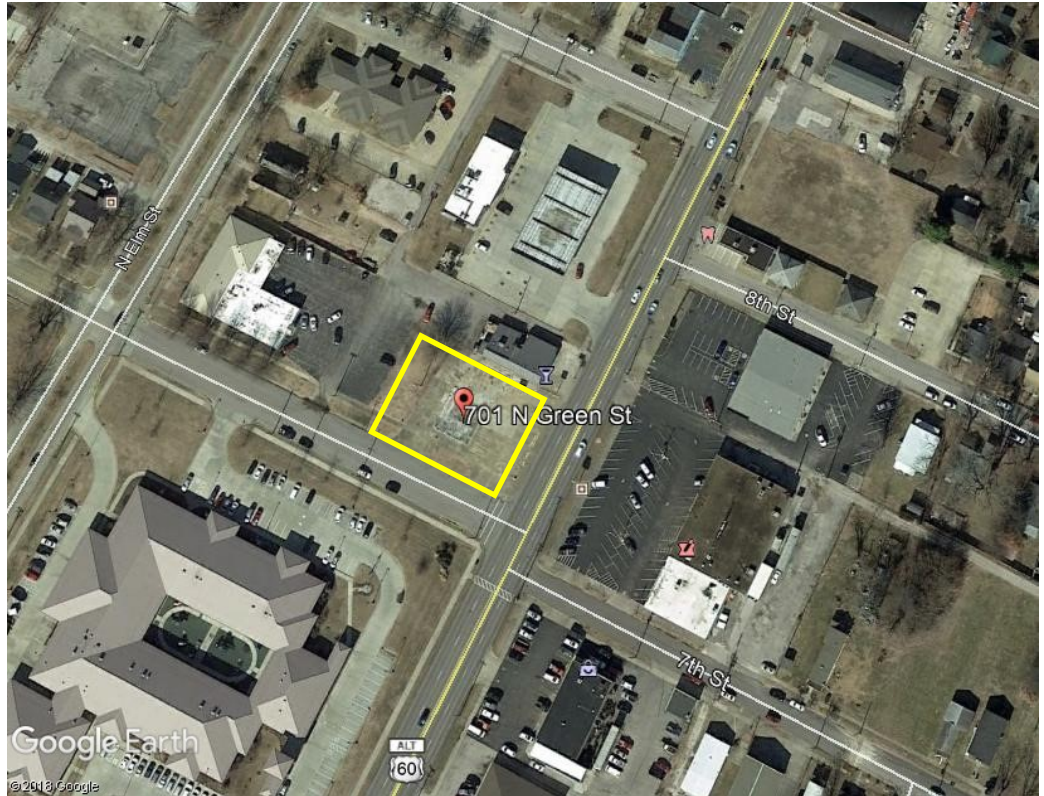
6131 Wedeking Avenue, G-1
Evansville, IN 47715

Office: 812-479-8440

Mobile: 812-480-7454

Email: miker@remax.net

www.richardsoncommercial.net



Financial Information:

Sale Price: \$250,000

Description:

Lot Size: 100' x 150'

Zoning: Commercial

Additional Information:

- Green Street (Hwy 60) is the main corridor to downtown Henderson.
- Great location for restaurant, professional office, or retail users.
- High traffic count.
- Neighbors include: Casey's, Thelma B. Johnson Learning Center, Ewing Tire, and D & M Family Foods.
- High traffic intersection of 7th Street and Green Street.
- Corner lot.
- Utilities available.