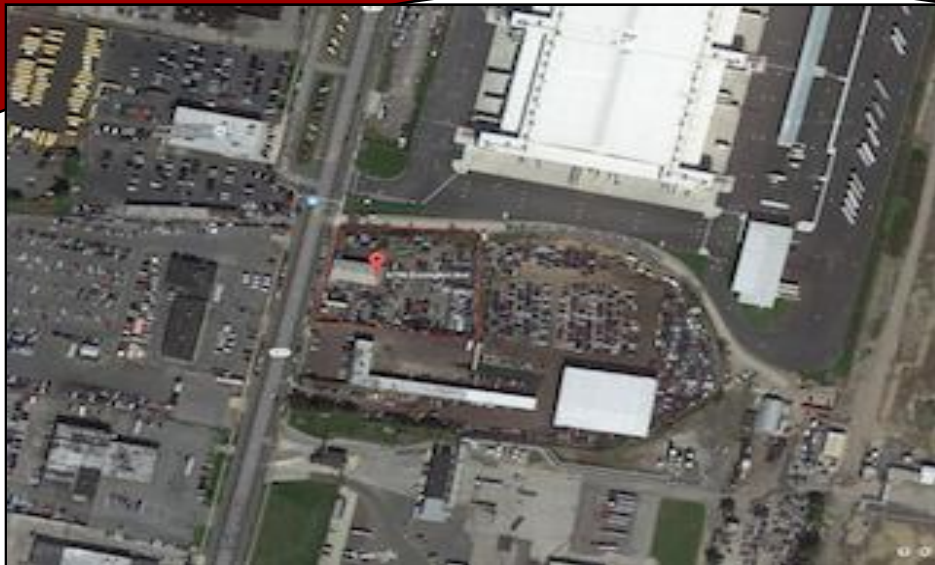


Salvage Yard

6796 Essington Ave , Philadelphia , PA 19148



- 2.7 Acres available
- Less than ten minutes from the Philadelphia International Airport
- Salvage Refuse
- Offered at \$3,500,000



Andre Watson
Associate Director
267-238-5735
Andre_Watson@kw.com

1619 Walnut Street, Suite 500
Philadelphia, PA 19103
(215) 627-3500 (p)
(215) 627-6525 (f)
www.crephiladelphia.com

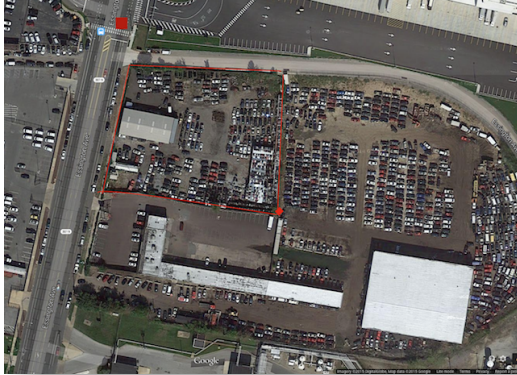
This property is located in the midst of the Philadelphia Airport auto mall. It is an established salvage refuse and auto body/repair shop for many years and does amazing business.

While zoned for light industrial use, this property could be easily turned into a drive thorough storage facility or long term parking for the Airport or overflow for any of the car dealerships along Essington Ave.

This location is also in close proximity to interstate 95 North & South, Interstate 76, the Philadelphia Navy yard, Walt Whitman Bridge as well the Philadelphia sports complex.

Property comes with close to one million in inventory.

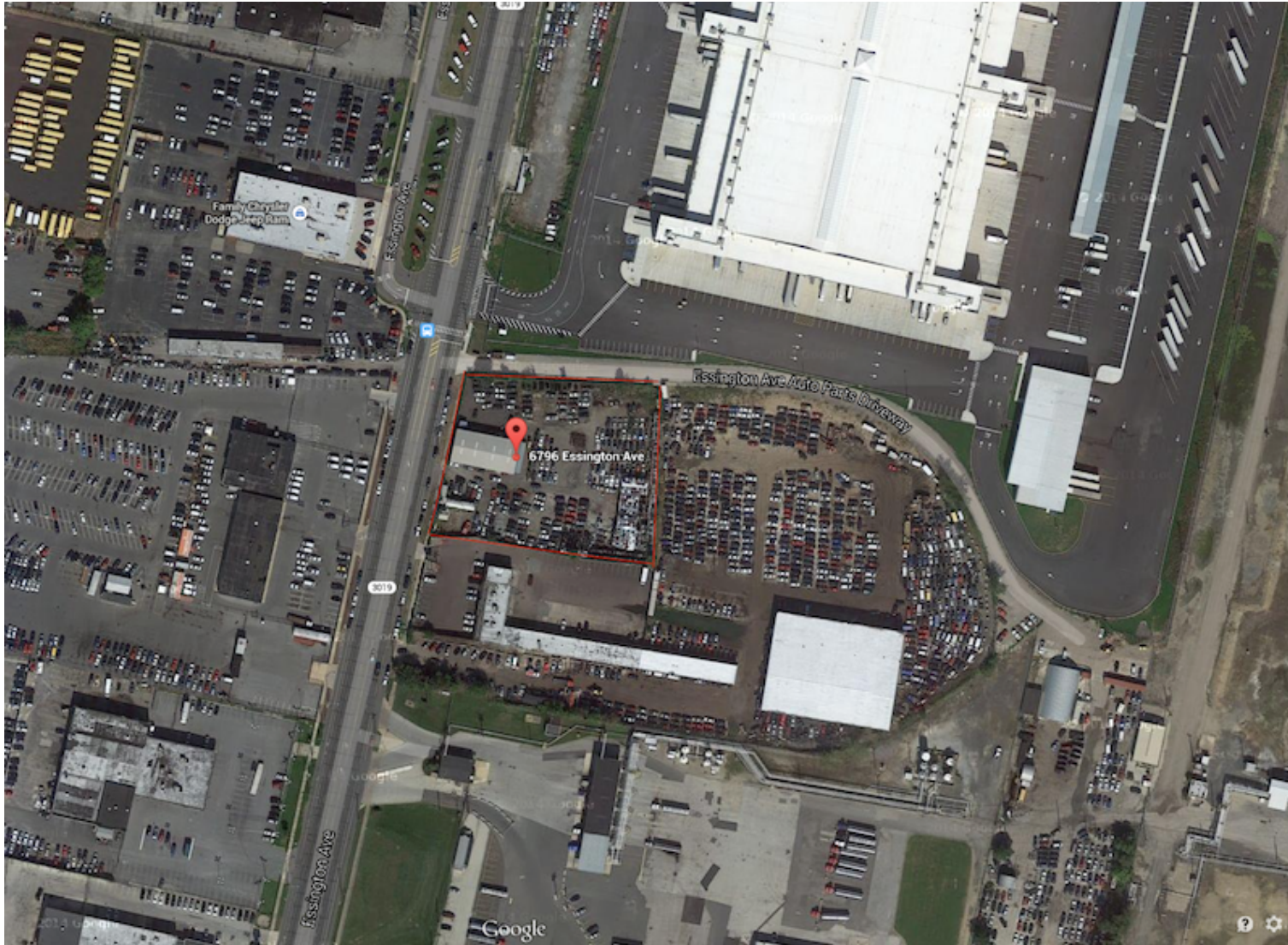
Seller is motivated, all reasonable offers will be considered.



6796 Essington Ave

Philadelphia , PA 19148

MAPS AND AERIALS



Real Estate Tax Balance Information								
Year	Principal	Interest	Penalty	Other	Total	Lien#	City Solicitor	Status
2000	\$0.00	\$0.00	\$0.00	\$0.00	\$0.00			
2001	\$0.00	\$0.00	\$0.00	\$0.00	\$0.00			
2002	\$0.00	\$0.00	\$0.00	\$0.00	\$0.00			
2003	\$0.00	\$0.00	\$0.00	\$0.00	\$0.00			
2004	\$0.00	\$0.00	\$0.00	\$0.00	\$0.00			
2005	\$0.00	\$0.00	\$0.00	\$0.00	\$0.00			
2006	\$0.00	\$0.00	\$0.00	\$0.00	\$0.00			
2007	\$0.00	\$0.00	\$0.00	\$0.00	\$0.00			
2008	\$0.00	\$0.00	\$0.00	\$0.00	\$0.00			
2009	\$0.00	\$0.00	\$0.00	\$0.00	\$0.00			
2010	\$0.00	\$0.00	\$0.00	\$0.00	\$0.00			
2011	\$0.00	\$0.00	\$0.00	\$0.00	\$0.00			
2012	\$0.00	\$0.00	\$0.00	\$0.00	\$0.00			
2013	\$0.00	\$0.00	\$0.00	\$0.00	\$0.00			
2014	\$0.00	\$0.00	\$0.00	\$0.00	\$0.00			
2015	\$3,624.56	\$0.00	\$0.00	\$0.00	\$3,624.56			
TOTALS	\$3,624.56	\$0.00	\$0.00	\$0.00	\$3,624.56			

Customer Information

BRT#:884169005

Property Address:06796 ESSINGTON AVE

Owner Name:6796 ESSINGTON AVENUE LLC

Lien Sale Account:

If Lien Sale Account is marked Y, the amount due listed may not include all Real Estate Tax liabilities. Call 215-790-1117 for more information.

Includes Payments Through:01/14/2015

Pay This Bill

Other Payment Options

Print Payment Coupon / Bill

Payment Agreements

Feedback

An amount in parenthesis, e.g., (\$1.00) indicates an overpayment for that year.

All information furnished regarding pr the accuracy thereof and same is submitted subject to errors, omissions, change of price, rental or other conditions, prior sale, lease or financing or withdrawal without notice. No liability of any kind is to be imposed on the broker herein.





2010 Census Profile

6796 Essington Ave, Philadelphia, Pennsylvania,
Ring: 1 mile radius

Latitude: 39.9083
Longitude: -75.22314

	2000	2010	2000-2010 Annual Rate
Population	13,124	14,058	0.69%
Households	5,176	5,049	-0.25%
Housing Units	5,509	5,473	-0.07%
Population by Race			
Total		14,058	100.0%
Population Reporting One Race		13,773	98.0%
White		2,088	14.9%
Black		10,515	74.8%
American Indian		31	0.2%
Asian		970	6.9%
Pacific Islander		1	0.0%
Some Other Race		168	1.2%
Population Reporting Two or More Races		285	2.0%
Total Hispanic Population		344	2.4%
Population by Sex			
Male		6,510	46.3%
Female		7,548	53.7%
Population by Age			
Total		14,062	100.0%
Age 0 - 4		1,173	8.3%
Age 5 - 9		1,181	8.4%
Age 10 - 14		1,151	8.2%
Age 15 - 19		1,156	8.2%
Age 20 - 24		1,011	7.2%
Age 25 - 29		884	6.3%
Age 30 - 34		958	6.8%
Age 35 - 39		1,059	7.5%
Age 40 - 44		1,018	7.2%
Age 45 - 49		973	6.9%
Age 50 - 54		856	6.1%
Age 55 - 59		671	4.8%
Age 60 - 64		574	4.1%
Age 65 - 69		462	3.3%
Age 70 - 74		328	2.3%
Age 75 - 79		254	1.8%
Age 80 - 84		180	1.3%
Age 85+		170	1.2%
Age 18+		9,839	70.0%
Age 65+		1,394	9.9%
Median Age by Sex and Race/Hispanic Origin			
Total Population		32.5	
Male		30.3	
Female		34.0	
White Alone		56.5	
Black Alone		28.7	
American Indian Alone		18.3	
Asian Alone		31.4	
Pacific Islander Alone		27.5	
Some Other Race Alone		26.0	
Two or More Races		21.4	
Hispanic Population		25.6	

Data Note: Hispanic population can be of any race. Census 2010 medians are computed from reported data distributions.
Source: U.S. Census Bureau, Census 2010 Summary File 1. Esri converted Census 2000 data into 2010 geography.

January 22, 2015

©2014 Esri

Page 1 of 12



2010 Census Profile

6796 Essington Ave, Philadelphia, Pennsylvania,
Ring: 1 mile radius

Latitude: 39.9083
Longitude: -75.22314

Households by Type		
Total	5,049	100.0%
Households with 1 Person	1,299	25.7%
Households with 2+ People	3,750	74.3%
Family Households	3,509	69.5%
Husband-wife Families	1,526	30.2%
With Own Children	709	14.0%
Other Family (No Spouse Present)	1,983	39.3%
With Own Children	1,143	22.6%
Nonfamily Households	241	4.8%
All Households with Children	2,173	43.0%
Multigenerational Households	391	7.7%
Unmarried Partner Households	418	8.3%
Male-female	380	7.5%
Same-sex	38	0.8%
Average Household Size	2.78	
Family Households by Size		
Total	3,509	100.0%
2 People	1,084	30.9%
3 People	946	27.0%
4 People	716	20.4%
5 People	427	12.2%
6 People	198	5.6%
7+ People	138	3.9%
Average Family Size	3.34	
Nonfamily Households by Size		
Total	1,539	100.0%
1 Person	1,299	84.4%
2 People	198	12.9%
3 People	29	1.9%
4 People	9	0.6%
5 People	1	0.1%
6 People	3	0.2%
7+ People	0	0.0%
Average Nonfamily Size	1.19	
Population by Relationship and Household Type		
Total	14,058	100.0%
In Households	14,047	99.9%
In Family Households	12,217	86.9%
Householder	3,489	24.8%
Spouse	1,516	10.8%
Child	5,594	39.8%
Other relative	1,119	8.0%
Nonrelative	499	3.6%
In Nonfamily Households	1,831	13.0%
In Group Quarters	11	0.1%
Institutionalized Population	0	0.0%
Noninstitutionalized Population	11	0.1%

Data Note: Households with children include any households with people under age 18, related or not. Multigenerational households are families with 3 or more parent-child relationships. Unmarried partner households are usually classified as nonfamily households unless there is another member of the household related to the householder. Multigenerational and unmarried partner households are reported only to the tract level. Esri estimated block group data, which is used to estimate polygons or non-standard geography. Average family size excludes nonrelatives.

Source: U.S. Census Bureau, Census 2010 Summary File 1.

January 22, 2015

©2014 Esri

Page 2 of 12



2010 Census Profile

6796 Essington Ave, Philadelphia, Pennsylvania,
Ring: 1 mile radius

Latitude: 39.9083
Longitude: -75.22314

Family Households by Age of Householder		
Total	3,509	100.0%
Householder Age 15 - 44	1,786	50.9%
Householder Age 45 - 54	792	22.6%
Householder Age 55 - 64	465	13.3%
Householder Age 65 - 74	281	8.0%
Householder Age 75+	185	5.3%
Nonfamily Households by Age of Householder		
Total	1,541	100.0%
Householder Age 15 - 44	447	29.0%
Householder Age 45 - 54	307	19.9%
Householder Age 55 - 64	315	20.4%
Householder Age 65 - 74	228	14.8%
Householder Age 75+	244	15.8%
Households by Race of Householder		
Total	5,050	100.0%
Householder is White Alone	1,090	21.6%
Householder is Black Alone	3,529	69.9%
Householder is American Indian Alone	6	0.1%
Householder is Asian Alone	285	5.6%
Householder is Pacific Islander Alone	1	0.0%
Householder is Some Other Race Alone	51	1.0%
Householder is Two or More Races	88	1.7%
Households with Hispanic Householder	100	2.0%
Husband-wife Families by Race of Householder		
Total	1,526	100.0%
Householder is White Alone	342	22.4%
Householder is Black Alone	988	64.7%
Householder is American Indian Alone	3	0.2%
Householder is Asian Alone	155	10.2%
Householder is Pacific Islander Alone	0	0.0%
Householder is Some Other Race Alone	20	1.3%
Householder is Two or More Races	18	1.2%
Husband-wife Families with Hispanic Householder	28	1.8%
Other Families (No Spouse) by Race of Householder		
Total	1,985	100.0%
Householder is White Alone	231	11.6%
Householder is Black Alone	1,610	81.1%
Householder is American Indian Alone	1	0.1%
Householder is Asian Alone	82	4.1%
Householder is Pacific Islander Alone	1	0.1%
Householder is Some Other Race Alone	20	1.0%
Householder is Two or More Races	40	2.0%
Other Families with Hispanic Householder	42	2.1%
Nonfamily Households by Race of Householder		
Total	1,540	100.0%
Householder is White Alone	517	33.6%
Householder is Black Alone	931	60.5%
Householder is American Indian Alone	2	0.1%
Householder is Asian Alone	48	3.1%
Householder is Pacific Islander Alone	0	0.0%
Householder is Some Other Race Alone	12	0.8%
Householder is Two or More Races	30	1.9%
Nonfamily Households with Hispanic Householder	30	1.9%

Source: U.S. Census Bureau, Census 2010 Summary File 1.

January 22, 2015

©2014 Esri

Page 3 of 12



2010 Census Profile

6796 Essington Ave, Philadelphia, Pennsylvania,
Ring: 1 mile radius

Latitude: 39.9083
Longitude: -75.22314

Total Housing Units by Occupancy		
Total	5,474	100.0%
Occupied Housing Units	5,049	92.2%
Vacant Housing Units		
For Rent	132	2.4%
Rented, not Occupied	19	0.3%
For Sale Only	59	1.1%
Sold, not Occupied	8	0.1%
For Seasonal/Recreational/Occasional Use	10	0.2%
For Migrant Workers	0	0.0%
Other Vacant	197	3.6%
Total Vacancy Rate	7.7%	
Households by Tenure and Mortgage Status		
Total	5,049	100.0%
Owner Occupied	3,496	69.2%
Owned with a Mortgage/Loan	2,707	53.6%
Owned Free and Clear	789	15.6%
Average Household Size	2.82	
Renter Occupied	1,553	30.8%
Average Household Size	2.69	
Owner-occupied Housing Units by Race of Householder		
Total	3,496	100.0%
Householder is White Alone	840	24.0%
Householder is Black Alone	2,361	67.5%
Householder is American Indian Alone	2	0.1%
Householder is Asian Alone	221	6.3%
Householder is Pacific Islander Alone	1	0.0%
Householder is Some Other Race Alone	23	0.7%
Householder is Two or More Races	48	1.4%
Owner-occupied Housing Units with Hispanic Householder	48	1.4%
Renter-occupied Housing Units by Race of Householder		
Total	1,554	100.0%
Householder is White Alone	250	16.1%
Householder is Black Alone	1,168	75.2%
Householder is American Indian Alone	3	0.2%
Householder is Asian Alone	64	4.1%
Householder is Pacific Islander Alone	0	0.0%
Householder is Some Other Race Alone	29	1.9%
Householder is Two or More Races	40	2.6%
Renter-occupied Housing Units with Hispanic Householder	52	3.3%
Average Household Size by Race/Hispanic Origin of Householder		
Householder is White Alone	1.98	
Householder is Black Alone	2.97	
Householder is American Indian Alone	2.50	
Householder is Asian Alone	3.42	
Householder is Pacific Islander Alone	2.00	
Householder is Some Other Race Alone	3.18	
Householder is Two or More Races	2.73	
Householder is Hispanic	3.11	

Source: U.S. Census Bureau, Census 2010 Summary File 1.

January 22, 2015

©2014 Esri

Page 4 of 12

6796 Essington Ave

Philadelphia , PA 19148



2010 Census Profile

6796 Essington Ave, Philadelphia, Pennsylvania,
Ring: 2 mile radius

Latitude: 39.9083
Longitude: -75.22314

	2000	2010	2000-2010 Annual Rate
Population	63,660	63,577	-0.01%
Households	23,477	23,190	-0.12%
Housing Units	26,587	26,147	-0.17%
Population by Race			
Total		63,576	100.0%
Population Reporting One Race		62,090	97.7%
White		6,618	10.4%
Black		50,865	80.0%
American Indian		190	0.3%
Asian		3,598	5.7%
Pacific Islander		22	0.0%
Some Other Race		797	1.3%
Population Reporting Two or More Races		1,486	2.3%
Total Hispanic Population		1,760	2.8%
Population by Sex			
Male		29,337	46.1%
Female		34,240	53.9%
Population by Age			
Total		63,579	100.0%
Age 0 - 4		5,506	8.7%
Age 5 - 9		5,010	7.9%
Age 10 - 14		4,940	7.8%
Age 15 - 19		5,368	8.4%
Age 20 - 24		5,099	8.0%
Age 25 - 29		4,857	7.6%
Age 30 - 34		4,238	6.7%
Age 35 - 39		4,165	6.6%
Age 40 - 44		4,286	6.7%
Age 45 - 49		4,226	6.6%
Age 50 - 54		4,198	6.6%
Age 55 - 59		3,484	5.5%
Age 60 - 64		2,647	4.2%
Age 65 - 69		1,963	3.1%
Age 70 - 74		1,287	2.0%
Age 75 - 79		1,003	1.6%
Age 80 - 84		701	1.1%
Age 85+		598	0.9%
Age 18+		44,860	70.6%
Age 65+		5,552	8.7%
Median Age by Sex and Race/Hispanic Origin			
Total Population		31.2	
Male		29.3	
Female		32.7	
White Alone		51.3	
Black Alone		29.4	
American Indian Alone		31.3	
Asian Alone		31.7	
Pacific Islander Alone		32.5	
Some Other Race Alone		27.3	
Two or More Races		21.8	
Hispanic Population		26.2	

Data Note: Hispanic population can be of any race. Census 2010 medians are computed from reported data distributions.
Source: U.S. Census Bureau, Census 2010 Summary File 1. Esri converted Census 2000 data into 2010 geography.

January 22, 2015

©2014 Esri

Page 5 of 12



2010 Census Profile

6796 Essington Ave, Philadelphia, Pennsylvania,
Ring: 2 mile radius

Latitude: 39.9083
Longitude: -75.22314

Households by Type		
Total	23,189	100.0%
Households with 1 Person	6,752	29.1%
Households with 2+ People	16,437	70.9%
Family Households	15,110	65.2%
Husband-wife Families	5,923	25.5%
With Own Children	2,696	11.6%
Other Family (No Spouse Present)	9,186	39.6%
With Own Children	5,150	22.2%
Nonfamily Households	1,327	5.7%
All Households with Children	9,450	40.8%
Multigenerational Households	1,870	8.1%
Unmarried Partner Households	1,835	7.9%
Male-female	1,686	7.3%
Same-sex	149	0.6%
Average Household Size	2.72	
Family Households by Size		
Total	15,109	100.0%
2 People	4,806	31.8%
3 People	3,987	26.4%
4 People	2,957	19.6%
5 People	1,764	11.7%
6 People	849	5.6%
7+ People	746	4.9%
Average Family Size	3.39	
Nonfamily Households by Size		
Total	8,080	100.0%
1 Person	6,752	83.6%
2 People	1,079	13.4%
3 People	169	2.1%
4 People	47	0.6%
5 People	20	0.2%
6 People	7	0.1%
7+ People	6	0.1%
Average Nonfamily Size	1.21	
Population by Relationship and Household Type		
Total	63,577	100.0%
In Households	63,171	99.4%
In Family Households	53,358	83.9%
Householder	15,157	23.8%
Spouse	5,954	9.4%
Child	25,077	39.4%
Other relative	4,965	7.8%
Nonrelative	2,206	3.5%
In Nonfamily Households	9,813	15.4%
In Group Quarters	406	0.6%
Institutionalized Population	127	0.2%
Noninstitutionalized Population	279	0.4%

Data Note: Households with children include any households with people under age 18, related or not. Multigenerational households are families with 3 or more parent-child relationships. Unmarried partner households are usually classified as nonfamily households unless there is another member of the household related to the householder. Multigenerational and unmarried partner households are reported only to the tract level. Esri estimated block group data, which is used to estimate polygons or non-standard geography. Average family size excludes nonrelatives.

Source: U.S. Census Bureau, Census 2010 Summary File 1.

January 22, 2015

©2014 Esri

Page 6 of 12



2010 Census Profile

6796 Essington Ave, Philadelphia, Pennsylvania,
Ring: 2 mile radius

Latitude: 39.9083
Longitude: -75.22314

Family Households by Age of Householder		
Total	15,111	100.0%
Householder Age 15 - 44	7,530	49.8%
Householder Age 45 - 54	3,489	23.1%
Householder Age 55 - 64	2,246	14.9%
Householder Age 65 - 74	1,191	7.9%
Householder Age 75+	655	4.3%
Nonfamily Households by Age of Householder		
Total	8,081	100.0%
Householder Age 15 - 44	2,790	34.5%
Householder Age 45 - 54	1,617	20.0%
Householder Age 55 - 64	1,676	20.7%
Householder Age 65 - 74	1,037	12.8%
Householder Age 75+	961	11.9%
Households by Race of Householder		
Total	23,190	100.0%
Householder is White Alone	3,320	14.3%
Householder is Black Alone	18,074	77.9%
Householder is American Indian Alone	63	0.3%
Householder is Asian Alone	1,050	4.5%
Householder is Pacific Islander Alone	10	0.0%
Householder is Some Other Race Alone	235	1.0%
Householder is Two or More Races	438	1.9%
Households with Hispanic Householder	534	2.3%
Husband-wife Families by Race of Householder		
Total	5,924	100.0%
Householder is White Alone	910	15.4%
Householder is Black Alone	4,285	72.3%
Householder is American Indian Alone	18	0.3%
Householder is Asian Alone	550	9.3%
Householder is Pacific Islander Alone	3	0.1%
Householder is Some Other Race Alone	76	1.3%
Householder is Two or More Races	82	1.4%
Husband-wife Families with Hispanic Householder	141	2.4%
Other Families (No Spouse) by Race of Householder		
Total	9,187	100.0%
Householder is White Alone	694	7.6%
Householder is Black Alone	7,896	85.9%
Householder is American Indian Alone	21	0.2%
Householder is Asian Alone	288	3.1%
Householder is Pacific Islander Alone	3	0.0%
Householder is Some Other Race Alone	87	0.9%
Householder is Two or More Races	198	2.2%
Other Families with Hispanic Householder	208	2.3%
Nonfamily Households by Race of Householder		
Total	8,079	100.0%
Householder is White Alone	1,715	21.2%
Householder is Black Alone	5,894	73.0%
Householder is American Indian Alone	25	0.3%
Householder is Asian Alone	212	2.6%
Householder is Pacific Islander Alone	4	0.1%
Householder is Some Other Race Alone	71	0.9%
Householder is Two or More Races	158	2.0%
Nonfamily Households with Hispanic Householder	186	2.3%

Source: U.S. Census Bureau, Census 2010 Summary File 1.

January 22, 2015

©2014 Esri

Page 7 of 12



2010 Census Profile

6796 Essington Ave, Philadelphia, Pennsylvania,
Ring: 2 mile radius

Latitude: 39.9083
Longitude: -75.22314

Total Housing Units by Occupancy		
Total	26,083	100.0%
Occupied Housing Units	23,190	88.9%
Vacant Housing Units		
For Rent	1,072	4.1%
Rented, not Occupied	90	0.3%
For Sale Only	303	1.2%
Sold, not Occupied	74	0.3%
For Seasonal/Recreational/Occasional Use	75	0.3%
For Migrant Workers	1	0.0%
Other Vacant	1,278	4.9%
Total Vacancy Rate	11.3%	
Households by Tenure and Mortgage Status		
Total	23,190	100.0%
Owner Occupied	12,230	52.7%
Owned with a Mortgage/Loan	8,942	38.6%
Owned Free and Clear	3,288	14.2%
Average Household Size	2.85	
Renter Occupied	10,960	47.3%
Average Household Size	2.58	
Owner-occupied Housing Units by Race of Householder		
Total	12,230	100.0%
Householder is White Alone	2,143	17.5%
Householder is Black Alone	9,097	74.4%
Householder is American Indian Alone	23	0.2%
Householder is Asian Alone	685	5.6%
Householder is Pacific Islander Alone	4	0.0%
Householder is Some Other Race Alone	76	0.6%
Householder is Two or More Races	202	1.7%
Owner-occupied Housing Units with Hispanic Householder	185	1.5%
Renter-occupied Housing Units by Race of Householder		
Total	10,959	100.0%
Householder is White Alone	1,176	10.7%
Householder is Black Alone	8,977	81.9%
Householder is American Indian Alone	40	0.4%
Householder is Asian Alone	365	3.3%
Householder is Pacific Islander Alone	6	0.1%
Householder is Some Other Race Alone	159	1.5%
Householder is Two or More Races	236	2.2%
Renter-occupied Housing Units with Hispanic Householder	349	3.2%
Average Household Size by Race/Hispanic Origin of Householder		
Householder is White Alone	2.05	
Householder is Black Alone	2.80	
Householder is American Indian Alone	2.70	
Householder is Asian Alone	3.41	
Householder is Pacific Islander Alone	2.60	
Householder is Some Other Race Alone	3.13	
Householder is Two or More Races	2.80	
Householder is Hispanic	2.90	

Source: U.S. Census Bureau, Census 2010 Summary File 1.

January 22, 2015

©2014 Esri

Page 8 of 12



2010 Census Profile

6796 Essington Ave, Philadelphia, Pennsylvania,
Ring: 3 mile radius

Latitude: 39.9083
Longitude: -75.22314

	2000	2010	2000-2010 Annual Rate
Population	193,987	190,760	-0.17%
Households	72,864	72,111	-0.10%
Housing Units	83,515	81,640	-0.23%
Population by Race			
Total		190,759	100.0%
Population Reporting One Race		186,073	97.5%
White		44,092	23.1%
Black		128,702	67.5%
American Indian		538	0.3%
Asian		10,563	5.5%
Pacific Islander		69	0.0%
Some Other Race		2,109	1.1%
Population Reporting Two or More Races		4,686	2.5%
Total Hispanic Population		5,648	3.0%
Population by Sex			
Male		87,531	45.9%
Female		103,228	54.1%
Population by Age			
Total		190,759	100.0%
Age 0 - 4		14,445	7.6%
Age 5 - 9		13,272	7.0%
Age 10 - 14		13,304	7.0%
Age 15 - 19		15,466	8.1%
Age 20 - 24		15,773	8.3%
Age 25 - 29		14,531	7.6%
Age 30 - 34		12,606	6.6%
Age 35 - 39		11,735	6.2%
Age 40 - 44		12,238	6.4%
Age 45 - 49		12,609	6.6%
Age 50 - 54		12,820	6.7%
Age 55 - 59		11,001	5.8%
Age 60 - 64		8,899	4.7%
Age 65 - 69		6,687	3.5%
Age 70 - 74		4,879	2.6%
Age 75 - 79		4,197	2.2%
Age 80 - 84		3,172	1.7%
Age 85+		3,126	1.6%
Age 18+		140,718	73.8%
Age 65+		22,061	11.6%
Median Age by Sex and Race/Hispanic Origin			
Total Population		33.4	
Male		31.4	
Female		35.0	
White Alone		42.7	
Black Alone		31.4	
American Indian Alone		31.9	
Asian Alone		30.2	
Pacific Islander Alone		27.8	
Some Other Race Alone		26.9	
Two or More Races		22.2	
Hispanic Population		25.9	

Data Note: Hispanic population can be of any race. Census 2010 medians are computed from reported data distributions.
Source: U.S. Census Bureau, Census 2010 Summary File 1. Esri converted Census 2000 data into 2010 geography.

January 22, 2015

©2014 Esri

Page 9 of 12



2010 Census Profile

6796 Essington Ave, Philadelphia, Pennsylvania,
Ring: 3 mile radius

Latitude: 39.9083
Longitude: -75.22314

Households by Type		
Total	72,112	100.0%
Households with 1 Person	22,131	30.7%
Households with 2+ People	49,981	69.3%
Family Households	44,888	62.2%
Husband-wife Families	19,078	26.5%
With Own Children	7,888	10.9%
Other Family (No Spouse Present)	25,810	35.8%
With Own Children	13,103	18.2%
Nonfamily Households	5,093	7.1%
All Households with Children	25,737	35.7%
Multigenerational Households	5,555	7.7%
Unmarried Partner Households	5,486	7.6%
Male-female	4,939	6.8%
Same-sex	547	0.8%
Average Household Size	2.61	
Family Households by Size		
Total	44,887	100.0%
2 People	15,452	34.4%
3 People	11,857	26.4%
4 People	8,565	19.1%
5 People	4,877	10.9%
6 People	2,283	5.1%
7+ People	1,853	4.1%
Average Family Size	3.29	
Nonfamily Households by Size		
Total	27,222	100.0%
1 Person	22,131	81.3%
2 People	3,931	14.4%
3 People	706	2.6%
4 People	245	0.9%
5 People	107	0.4%
6 People	56	0.2%
7+ People	46	0.2%
Average Nonfamily Size	1.27	
Population by Relationship and Household Type		
Total	190,760	100.0%
In Households	188,079	98.6%
In Family Households	153,632	80.5%
Householder	44,956	23.6%
Spouse	19,112	10.0%
Child	70,570	37.0%
Other relative	13,032	6.8%
Nonrelative	5,961	3.1%
In Nonfamily Households	34,446	18.1%
In Group Quarters	2,681	1.4%
Institutionalized Population	1,213	0.6%
Noninstitutionalized Population	1,469	0.8%

Data Note: Households with children include any households with people under age 18, related or not. Multigenerational households are families with 3 or more parent-child relationships. Unmarried partner households are usually classified as nonfamily households unless there is another member of the household related to the householder. Multigenerational and unmarried partner households are reported only to the tract level. Esri estimated block group data, which is used to estimate polygons or non-standard geography. Average family size excludes nonrelatives.

Source: U.S. Census Bureau, Census 2010 Summary File 1.

January 22, 2015

©2014 Esri

Page 10 of 12



2010 Census Profile

6796 Essington Ave, Philadelphia, Pennsylvania,
Ring: 3 mile radius

Latitude: 39.9083
Longitude: -75.22314

Family Households by Age of Householder		
Total	44,889	100.0%
Householder Age 15 - 44	19,861	44.2%
Householder Age 45 - 54	10,240	22.8%
Householder Age 55 - 64	7,259	16.2%
Householder Age 65 - 74	4,282	9.5%
Householder Age 75+	3,247	7.2%
Nonfamily Households by Age of Householder		
Total	27,223	100.0%
Householder Age 15 - 44	9,665	35.5%
Householder Age 45 - 54	4,841	17.8%
Householder Age 55 - 64	5,303	19.5%
Householder Age 65 - 74	3,571	13.1%
Householder Age 75+	3,843	14.1%
Households by Race of Householder		
Total	72,111	100.0%
Householder is White Alone	20,061	27.8%
Householder is Black Alone	46,706	64.8%
Householder is American Indian Alone	198	0.3%
Householder is Asian Alone	3,141	4.4%
Householder is Pacific Islander Alone	33	0.0%
Householder is Some Other Race Alone	605	0.8%
Householder is Two or More Races	1,367	1.9%
Households with Hispanic Householder	1,657	2.3%
Husband-wife Families by Race of Householder		
Total	19,077	100.0%
Householder is White Alone	6,582	34.5%
Householder is Black Alone	10,443	54.7%
Householder is American Indian Alone	46	0.2%
Householder is Asian Alone	1,516	7.9%
Householder is Pacific Islander Alone	9	0.0%
Householder is Some Other Race Alone	195	1.0%
Householder is Two or More Races	286	1.5%
Husband-wife Families with Hispanic Householder	476	2.5%
Other Families (No Spouse) by Race of Householder		
Total	25,810	100.0%
Householder is White Alone	3,627	14.1%
Householder is Black Alone	20,589	79.8%
Householder is American Indian Alone	57	0.2%
Householder is Asian Alone	760	2.9%
Householder is Pacific Islander Alone	8	0.0%
Householder is Some Other Race Alone	216	0.8%
Householder is Two or More Races	553	2.1%
Other Families with Hispanic Householder	563	2.2%
Nonfamily Households by Race of Householder		
Total	27,224	100.0%
Householder is White Alone	9,852	36.2%
Householder is Black Alone	15,674	57.6%
Householder is American Indian Alone	95	0.3%
Householder is Asian Alone	865	3.2%
Householder is Pacific Islander Alone	16	0.1%
Householder is Some Other Race Alone	194	0.7%
Householder is Two or More Races	528	1.9%
Nonfamily Households with Hispanic Householder	619	2.3%

Source: U.S. Census Bureau, Census 2010 Summary File 1.

January 22, 2015

©2014 Esri

Page 11 of 12



2010 Census Profile

6796 Essington Ave, Philadelphia, Pennsylvania,
Ring: 3 mile radius

Latitude: 39.9083
Longitude: -75.22314

Total Housing Units by Occupancy		
Total	81,610	100.0%
Occupied Housing Units	72,111	88.4%
Vacant Housing Units		
For Rent	3,185	3.9%
Rented, not Occupied	271	0.3%
For Sale Only	1,071	1.3%
Sold, not Occupied	337	0.4%
For Seasonal/Recreational/Occasional Use	187	0.2%
For Migrant Workers	1	0.0%
Other Vacant	4,447	5.4%
Total Vacancy Rate	11.7%	
Households by Tenure and Mortgage Status		
Total	72,111	100.0%
Owner Occupied	40,771	56.5%
Owned with a Mortgage/Loan	26,655	37.0%
Owned Free and Clear	14,116	19.6%
Average Household Size	2.67	
Renter Occupied	31,340	43.5%
Average Household Size	2.53	
Owner-occupied Housing Units by Race of Householder		
Total	40,771	100.0%
Householder is White Alone	13,096	32.1%
Householder is Black Alone	24,882	61.0%
Householder is American Indian Alone	86	0.2%
Householder is Asian Alone	1,869	4.6%
Householder is Pacific Islander Alone	9	0.0%
Householder is Some Other Race Alone	214	0.5%
Householder is Two or More Races	615	1.5%
Owner-occupied Housing Units with Hispanic Householder	648	1.6%
Renter-occupied Housing Units by Race of Householder		
Total	31,340	100.0%
Householder is White Alone	6,965	22.2%
Householder is Black Alone	21,824	69.6%
Householder is American Indian Alone	112	0.4%
Householder is Asian Alone	1,272	4.1%
Householder is Pacific Islander Alone	24	0.1%
Householder is Some Other Race Alone	391	1.2%
Householder is Two or More Races	752	2.4%
Renter-occupied Housing Units with Hispanic Householder	1,009	3.2%
Average Household Size by Race/Hispanic Origin of Householder		
Householder is White Alone	2.19	
Householder is Black Alone	2.73	
Householder is American Indian Alone	2.55	
Householder is Asian Alone	3.25	
Householder is Pacific Islander Alone	2.70	
Householder is Some Other Race Alone	3.21	
Householder is Two or More Races	2.73	
Householder is Hispanic	2.93	

Source: U.S. Census Bureau, Census 2010 Summary File 1.

January 22, 2015

©2014 Esri

Page 12 of 12



Business Locations

6796 Essington Ave, Philadelphia,
Rings: 1, 2, 3 mile radii

Prepared by Esri
Latitude: 39.908300
Longitude: -75.223140

2010 Residential Population:	190,760	2014 Total Sales	\$11,364,385,468
2014 Residential Population:	193,150	2014 Daytime Business Population	61,184
2019 Residential Population:	196,694	Daytime Business/Residential Ratio:	0.32:1
Annual Population Growth 2014 - 2019	0.36%	Total Number of Businesses:	9,792

SIC Code	Business Name	Franchise	Distance From Site in Miles	Employees	Sales
50150100	ESSINGTON AVENUE AUTO PARTS 6770 Essington Ave Philadelphia, PA 19153		0.02 NE	2	\$230,000
50150100	CARL BROWN 6760 Essington Ave Philadelphia, PA 19153		0.02 NE	1	\$94,000
99990000	BEST STAFF, INC. 6741 Essington Ave Philadelphia, PA 19153		0.02 NW	0	\$0
51990000	H&H DISTRIBUTORS EAST 6741 Essington Ave Philadelphia, PA 19153		0.02 NW	2	\$120,000
75380000	T C K AUTO CENTER 6741 Essington Ave Philadelphia, PA 19153		0.02 NW	2	\$130,000
50120000	WEBUYANYCAR.COM 6815 Essington Ave Philadelphia, PA 19153		0.03 SW	1	\$3,571,428
41190103	FOUR SEASONS LIMOUSINE SERVICE INC 6815 Essington Ave Philadelphia, PA 19153		0.03 SW	20	\$660,000
55310103	PHIL'S AUTO PARTS 6750 Essington Ave Philadelphia, PA 19153		0.03 NE	1	\$120,000
89990000	ST. SERVICES 6850 Essington Ave Philadelphia, PA 19153		0.06 SW	1	\$48,000
42130000	GOODMAN TANK LINES 6850 Essington Ave Philadelphia, PA 19153		0.06 SW	2	\$130,000
55119901	CHRSLR 6735 Essington Ave Philadelphia, PA 19153	55118006	0.06 NW	48	\$14,200,000
50150000	GIANNA'S U-PULL IT 6800 Essington Ave Philadelphia, PA 19153		0.09 SE	5	\$290,000
73890000	D'AMATO ENTERPRISES, INC. 6800 Essington Ave Phila, PA 19153		0.09 SE	1	\$76,000
99992222	FRANCES D WETHERINGTON 6800 Essington Ave Philadelphia, PA 19153		0.09 SE	0	\$0

Data Note: Businesses are listed based on their proximity to the study area location. A maximum of 250 records can be displayed on one report.

Source: Copyright 2014 Dun & Bradstreet, Inc. All rights reserved. Esri Total Residential Population forecasts for 2014.

January 22, 2015

6796 Essington Ave

Philadelphia , PA 19148



Business Locations

6796 Essington Ave, Philadelphia,
Rings: 1, 2, 3 mile radii

Prepared by Esri
Latitude: 39.908300
Longitude: -75.223140

SIC Code	Business Name	Franchise	Distance From Site in Miles	Employees	Sales
58130200	OASIS ON ESSINGTON 6800 Essington Ave Philadelphia, PA 19153		0.09 SE	3	\$160,000
55119901	METRO MOTORCARS 6729 Essington Ave Philadelphia, PA 19153		0.13 NW	15	\$3,700,000
99992222	ARF ACCEPT 6729 Essington Ave Phila, PA 19153		0.13 NW	0	\$0
75320202	MAACO AUTO PAINTING 6717 Essington Ave Philadelphia, PA 19153	75328011	0.14 NE	10	\$999,999
55119901	MAZDA 6717 Essington Ave Philadelphia, PA 19153	55118016	0.14 NE	40	\$11,700,000
55219902	MALL AUTO OUTLET, INCORPORATED 6717 Essington Ave Philadelphia, PA 19153		0.14 NE	3	\$290,000
99992222	T.H. & P.C. CORP. 6717 Essington Ave Philadelphia, PA 19153		0.14 NE	0	\$0
72991105	PACIFICO AIRPORT VALET SERVICE 6717 Essington Ave Philadelphia, PA 19153		0.14 NE	100	\$4,800,000
75320401	A PARK AUTO BODY & TOWING 6940 Norwitch Dr Philadelphia, PA 19153		0.16 NW	10	\$770,000
75420000	BILL'S DETAILING 6940 Norwitch Dr Ste 4 Philadelphia, PA 19153		0.16 NW	2	\$88,000
75380000	TAYLORS CERTIFIED AUTO SERVICE INC 6940 Norwitch Dr Ste 3 Philadelphia, PA 19153		0.16 NW	4	\$440,000
73590000	JT RENTAL ASSOCIATES, INC. 6940 Norwitch Dr Philadelphia, PA 19153		0.16 NW	2	\$140,000
99992222	MOBILE WASH TO GO 6940 Norwitch Dr Philadelphia, PA 19153		0.16 NW	0	\$0
55119901	NISSAN 6723 Essington Ave Philadelphia, PA 19153	55118019	0.17 NW	50	\$13,900,000
51480000	QUAKER CITY 6700 Essington Ave Philadelphia, PA 19153		0.19 NE	30	\$7,500,000
96410000	FRUIT AND VEGETABLE PROGRAM 6700 Essington Ave C101 Philadelphia, PA 19153		0.19 NE	20	\$0

Data Note: Businesses are listed based on their proximity to the study area location. A maximum of 250 records can be displayed on one report.

Source: Copyright 2014 Dun & Bradstreet, Inc. All rights reserved. Esri Total Residential Population forecasts for 2014.

January 22, 2015

©2014 Esri

Page 2 of 16

6796 Essington Ave

Philadelphia , PA 19148



Business Locations

6796 Essington Ave, Philadelphia,
Rings: 1, 2, 3 mile radii

Prepared by Esri
Latitude: 39.908300
Longitude: -75.223140

SIC Code	Business Name	Franchise	Distance From Site in Miles	Employees	Sales
65120100	PHILADELPHIA REGIONAL PROD MKT 6700 Essington Ave Philadelphia, PA 19153		0.19 NE	30	\$2,300,000
51480000	M. LEVIN & COMPANY 6700 Essington Ave H1 Philadelphia, PA 19153		0.19 NE	4	\$3,733,333
51480102	A VASSALLO INC 6700 Essington Ave Philadelphia, PA 19153		0.19 NE	9	\$1,700,000
51480000	E W KEAN CO INC 6700 Essington Ave Philadelphia, PA 19153		0.19 NE	14	\$3,000,000
99992222	J PONTERI AND SONS 6700 Essington Ave Philadelphia, PA 19153		0.19 NE	0	\$0
01910000	RT 9 GOLDEN FARM MARKET INC 6700 Essington Ave Philadelphia, PA 19153		0.19 NE	1	\$56,000
54310000	MONTE FRANK 6700 Essington Ave F205 Philadelphia, PA 19153		0.19 NE	2	\$80,000
99992222	AL FINER CO 6700 Essington Ave I1 Philadelphia, PA 19153		0.19 NE	0	\$0
47890000	MVP LOGISTICS, LLC 6700 Essington Ave Philadelphia, PA 19153		0.19 NE	4	\$220,000
99990000	COLONIAL PRODUCE LLC 6700 Essington Ave Philadelphia, PA 19153		0.19 NE	0	\$0
99992222	WUHI SHAFMAN LIEBERMAN CORP 6700 Essington Ave Philadelphia, PA 19153		0.19 NE	0	\$0
51480000	COLLOTTI & SONS, INC. 6700 Essington Ave I7-I8 Philadelphia, PA 19153		0.19 NE	12	\$3,300,000
50720401	BRADLEY PARK COMPANY 6700 Essington Ave Philadelphia, PA 19153		0.19 NE	2	\$130,000
73239901	PHILADELPHIA PRODUCE CREDIT BUREAU INC 6700 Essington Ave C209 Philadelphia, PA 19153		0.19 NE	5	\$540,000
42120000	MID ATLANTIC STATES TRUCK SALES 6851 Norwitch Dr Philadelphia, PA 19153		0.19 NW	4	\$210,000
75130000	U HAUL 6938 Norwitch Dr Philadelphia, PA 19153	75138001	0.21 SW	2	\$120,000

Data Note: Businesses are listed based on their proximity to the study area location. A maximum of 250 records can be displayed on one report.

Source: Copyright 2014 Dun & Bradstreet, Inc. All rights reserved. Esri Total Residential Population forecasts for 2014.

January 22, 2015

©2014 Esri

Page 3 of 16



Business Locations

6796 Essington Ave, Philadelphia,
Rings: 1, 2, 3 mile radii

Prepared by Esri
Latitude: 39.908300
Longitude: -75.223140

SIC Code	Business Name	Franchise	Distance From Site in Miles	Employees	Sales
75149902	PAYLESS CAR RENTAL 6938 Norwitch Dr Philadelphia, PA 19153	75148006	0.21 SW	8	\$780,000
75320000	PARK TOM AUTO BODY 6948 Norwitch Dr Philadelphia, PA 19153		0.22 SW	2	\$110,000
75149902	NATIONAL CAR RENTAL SYSTEM 6950 Norwitch Dr Philadelphia, PA 19153	75148012	0.22 SW	25	\$0
47890000	MAJOR LOGISTICS 6950 Norwitch Dr Philadelphia, PA 19153		0.22 SW	2	\$89,000
55110000	KIA 6915 Essington Ave Philadelphia, PA 19153	55118040	0.22 SW	0	\$0
75490100	HERTZ 6951 Norwitch Dr Philadelphia, PA 19153	75148005	0.22 SW	30	\$2,664,506
42130000	JOHNSON'S TRANSFER INC 6951 Norwitch Dr Philadelphia, PA 19153		0.22 SW	50	\$6,300,000
42130000	DENNIS TRUCKING COMPANY INC. 6951 Norwitch Dr Philadelphia, PA 19153		0.22 SW	15	\$7,900,000
99992222	J C D LTD 6951 Norwitch Dr Philadelphia, PA 19153		0.22 SW	0	\$0
41110100	CMT EXPRESS 6971 Norwitch Dr Philadelphia, PA 19153		0.23 SW	4	\$120,000
41190000	OKINE LLC 6971 Norwitch Dr Ste C Philadelphia, PA 19153		0.23 SW	3	\$140,000
99992222	70TH AND NORWITCH DR LLC 6975 Norwitch Dr Philadelphia, PA 19153		0.25 SW	0	\$0
84129902	THE FREDERICK A SIMEONE M D FOUNDATION 6825 Norwitch Dr Philadelphia, PA 19153		0.26 NW	4	\$209,000
80110105	FREDERICK SIMEONE 6825 Norwitch Dr Philadelphia, PA 19153		0.26 NW	3	\$160,000
55110000	HONDA 6935 Essington Ave Philadelphia, PA 19153	55118010	0.26 SW	1	\$140,000
75149902	HERTZ LOCAL EDITION CORP. 6935 Essington Ave Philadelphia, PA 19153		0.26 SW	6	\$0

Data Note: Businesses are listed based on their proximity to the study area location. A maximum of 250 records can be displayed on one report.

Source: Copyright 2014 Dun & Bradstreet, Inc. All rights reserved. Esri Total Residential Population forecasts for 2014.

January 22, 2015



Business Locations

6796 Essington Ave, Philadelphia,
Rings: 1, 2, 3 mile radii

Prepared by Esri
Latitude: 39.908300
Longitude: -75.223140

SIC Code	Business Name	Franchise	Distance From Site in Miles	Employees	Sales
41210000	CITY CAR SALES 6821 Norwitch Dr Philadelphia, PA 19153		0.30 NW	4	\$260,000
75380000	1ST CHOICE CAR REPAIR INC 6821 Norwitch Dr Philadelphia, PA 19153		0.30 NW	1	\$62,000
41190103	FIRST CLASS LIMOUSINE 6821 Norwitch Dr Philadelphia, PA 19153		0.30 NW	3	\$98,000
22730500	MAINLINE RUG GALLERY CO INC 6821 Norwitch Dr Philadelphia, PA 19153		0.30 NW	2	\$500,000
73890000	YELLOW BUS CO INC 6821 Norwitch Dr Philadelphia, PA 19153		0.30 NW	2	\$130,000
55119901	FORD 6701 Essington Ave Philadelphia, PA 19153	55118009	0.32 NW	132	\$37,000,000
42259903	XTL, INC. 3200 S 70th St Philadelphia, PA 19153		0.32 NW	28	\$12,200,000
50789903	CSTK EAST, LLC 7301 Holstein Ave Philadelphia, PA 19153		0.33 SW	0	\$0
73890603	US POST OFFICE 3190 S 70th St Philadelphia, PA 19153		0.34 NW	4	\$0
75320401	PACIFICO FORD 6751 Norwitch Dr Philadelphia, PA 19153		0.34 NW	2	\$140,000
75149902	ENTERPRISE RENT A CAR 6751 Norwitch Dr Philadelphia, PA 19153	75148020	0.34 NW	5	\$1,967,813
59120000	CVS 6900 Lindbergh Blvd # 500 Philadelphia, PA 19142		0.36 NW	10	\$1,170,885
72310000	BEAUTY COSTCO, INC. 6900 Lindbergh Blvd Philadelphia, PA 19142		0.36 NW	1	\$46,000
99992222	B.B. LEASE CO. 6900 Lindbergh Blvd Philadelphia, PA 19142		0.36 NW	0	\$0
87410000	LINDBERGH BI INC 6900 Lindbergh Blvd Philadelphia, PA 19142		0.36 NW	2	\$160,000
50870101	BEN'S BEAUTY SUPPLY DIST. 6900 Lndbrgh Blvd Ste 300 Philadelphia, PA 19142		0.36 NW	0	\$278,571

Data Note: Businesses are listed based on their proximity to the study area location. A maximum of 250 records can be displayed on one report.

Source: Copyright 2014 Dun & Bradstreet, Inc. All rights reserved. Esri Total Residential Population forecasts for 2014.

January 22, 2015

6796 Essington Ave

Philadelphia , PA 19148



Business Locations

6796 Essington Ave, Philadelphia,
Rings: 1, 2, 3 mile radii

Prepared by Esri
Latitude: 39.908300
Longitude: -75.223140

SIC Code	Business Name	Franchise	Distance From Site in Miles	Employees	Sales
73899999	HORACE JOHNSON JR 3306 S 67th St Philadelphia, PA 19153		0.37 NE	1	\$75,000
42260000	PLAINS PRODUCT TERMINAL 3400 S 67th St Philadelphia, PA 19153		0.37 NE	2	\$94,000
55219902	NICK'S SALVAGE YARD 6660 Essington Ave Philadelphia, PA 19153		0.38 NE	0	\$810,000
50130100	CLAUDIO'S AUTO PARTS 6660 Essington Ave Philadelphia, PA 19153		0.38 NE	2	\$190,000
26790402	MARIAS AUTO TAGS 6660 Essington Ave Philadelphia, PA 19153		0.38 NE	1	\$94,000
99992222	SENTAUR GROUP, LLC 3245 S 74th St Philadelphia, PA 19153		0.39 SW	0	\$0
99992222	CARUSONE VENTURES, LLC 3245 S 74th St Philadelphia, PA 19153		0.39 SW	0	\$0
50470000	AIMES 6800 Lindbergh Blvd Philadelphia, PA 19142		0.39 NW	19	\$400,000
86610121	CHRIST HAVEN PENTECOSTAL CHURCH 6800 Lindbergh Blvd Philadelphia, PA 19142		0.39 NW	0	\$0
73891603	US POST OFFICE PHILA VEHI 3201 S 74th St Philadelphia, PA 19153		0.39 SW	2	\$96,000
75149902	AVIS 6615 Norwitch Dr Philadelphia, PA 19153	75148017	0.40 NW	45	\$2,500,000
47890000	TROPHY LIMOUSINE 7000 Holstein Ave Ste 1 Philadelphia, PA 19153		0.40 SW	4	\$180,000
34210100	LA CAFFERIA LLC 7000 Holstein Ave Ste 3 Philadelphia, PA 19153		0.40 SW	4	\$210,000
51490700	110TH STREET BAKED GOODS INC 7000 Holstein Ave Ste 2 Philadelphia, PA 19153		0.40 SW	2	\$110,000
57310000	ITRON, INC. 7000 Holstein Ave Ste 6 Philadelphia, PA 19153		0.40 SW	5	\$2,347,174
73899906	D & L COFFEE SERVICE, INC. 7000 Holstein Ave Ste 3 Philadelphia, PA 19153		0.40 SW	2	\$97,000

Data Note: Businesses are listed based on their proximity to the study area location. A maximum of 250 records can be displayed on one report.

Source: Copyright 2014 Dun & Bradstreet, Inc. All rights reserved. Esri Total Residential Population forecasts for 2014.

January 22, 2015

©2014 Esri

Page 6 of 16



Business Locations

6796 Essington Ave, Philadelphia,
Rings: 1, 2, 3 mile radii

Prepared by Esri
Latitude: 39.908300
Longitude: -75.223140

SIC Code	Business Name	Franchise	Distance From Site in Miles	Employees	Sales
80110200	CONCENTRA MEDICAL CENTERS 7000 Holstein Ave Ste 7 Philadelphia, PA 19153		0.40 SW	5	\$173,134
27520000	REPRO CENTER PRINTING 6750 Lindbergh Blvd Philadelphia, PA 19142		0.42 NW	2	\$150,000
17210000	ROYAL JAMES PAINTING 6833 Lindbergh Blvd Philadelphia, PA 19142		0.43 NW	1	\$44,000
73890000	ABRAMS METAL COMPANY 60th Lindbergh Blvd Philadelphia, PA 19142		0.44 NW	1	\$69,000
42259903	SHURGARD STORAGE CENTERS 7000 Lindbergh Blvd Philadelphia, PA 19153		0.44 NW	3	\$0
17999912	R T C ASSOCIATES 7000 Lindbergh Blvd Philadelphia, PA 19153		0.44 NW	2	\$120,000
42250000	PUBLIC STORAGE 7000 Lindbergh Blvd Philadelphia, PA 19153		0.44 NW	2	\$84,000
54619905	DUNKIN' DONUTS 6600 Essington Ave Ste 2 Philadelphia, PA 19153	54618024	0.45 NE	4	\$140,000
54110000	SHORE STOP FOOD STORES 6600 Essington Ave Philadelphia, PA 19153		0.45 NE	3	\$200,000
42120000	DIAMOND T TRIANGLE TRUCK SALES 6600 Essington Ave Philadelphia, PA 19153		0.45 NE	1	\$70,000
75380000	ARNOLD'S AUTO AND TOWING 6600 Essington Ave Philadelphia, PA 19153		0.45 NE	2	\$110,000
55110000	MARIOS AUTO SALES INC 6600 Essington Ave Philadelphia, PA 19153		0.45 NE	0	\$0
55219902	SPINA'S AUTO PARTS 6650 Essington Ave Philadelphia, PA 19153		0.45 NE	3	\$500,000
99992222	MARVELOUS WORKS, LLC 6828 Grebe Pl Philadelphia, PA 19142		0.45 NW	0	\$0
73890000	T D RECON CENTER 3033 S 68th St Philadelphia, PA 19142		0.45 NW	2	\$140,000
99990000	PIERRE SAINT ENTERPRISES INC 6806 Grebe Pl Philadelphia, PA 19142		0.45 NW	0	\$0

Data Note: Businesses are listed based on their proximity to the study area location. A maximum of 250 records can be displayed on one report.

Source: Copyright 2014 Dun & Bradstreet, Inc. All rights reserved. Esri Total Residential Population forecasts for 2014.

January 22, 2015



Business Locations

6796 Essington Ave, Philadelphia,
Rings: 1, 2, 3 mile radii

Prepared by Esri
Latitude: 39.908300
Longitude: -75.223140

SIC Code	Business Name	Franchise	Distance From Site in Miles	Employees	Sales
73899999	PHILLIPS, JERVAIS 6924 Ibis Pl Philadelphia, PA 19142		0.46 NW	2	\$120,000
59999929	A&E DISTRIBUTOR 3031 S 68th St Philadelphia, PA 19142		0.46 NW	1	\$59,000
17610102	CLARK ROOFING CO 6727 Lindbergh Blvd Philadelphia, PA 19142		0.46 NW	3	\$170,000
72310000	CHRISTOPHERS HARMONY BEAUTY SALON 6914 Ibis Pl Philadelphia, PA 19142		0.46 NW	1	\$28,000
83519901	ABC 123 DAYCARE LLC 3021 S 70th St Philadelphia, PA 19142		0.46 NW	5	\$170,000
07529901	PHILADELPHIA PET HOTEL AND VILLAS, INC. 7401 Holstein Ave Philadelphia, PA 19153		0.46 SW	2	\$78,000
15420000	WYATT 7400 Brewster Ave Philadelphia, PA 19153		0.47 SW	75	\$4,668,750
73891300	D F YOUNG 7400 Brewster Ave Philadelphia, PA 19153		0.47 SW	1	\$86,000
20820100	CINTRON BEVERAGE GROUP, LLC 7400 Brewster Ave Philadelphia, PA 19153		0.47 SW	9	\$850,000
86990000	TEO CHEW ASSOCIATION OF GREATER 6630 Lindbergh Blvd Philadelphia, PA 19142		0.47 NW	2	\$100,000
73899999	ANTHONY H WILLIAMS 6630 Lindbergh Blvd Philadelphia, PA 19142		0.47 NW	2	\$130,000
83220000	TURNING POINT 6844 Grebe Pl Philadelphia, PA 19142		0.47 NW	2	\$96,000
57340000	TECHMASTER 6711 Lindbergh Blvd Philadelphia, PA 19142		0.47 NW	2	\$120,000
73899999	PRINCE A BURNS 7023 Lindbergh Blvd 2 Philadelphia, PA 19153		0.48 NW	1	\$63,000
17990000	PARTNERS OF WEST PHILADELPHIA 6827 Grebe Pl Philadelphia, PA 19142		0.48 NW	1	\$81,000
51990000	LIVINGSTON TRADING COMPANY, INC. 6827 Grebe Pl Philadelphia, PA 19142		0.48 NW	1	\$92,000

Data Note: Businesses are listed based on their proximity to the study area location. A maximum of 250 records can be displayed on one report.

Source: Copyright 2014 Dun & Bradstreet, Inc. All rights reserved. Esri Total Residential Population forecasts for 2014.

January 22, 2015

6796 Essington Ave

Philadelphia , PA 19148



Business Locations

6796 Essington Ave, Philadelphia,
Rings: 1, 2, 3 mile radii

Prepared by Esri
Latitude: 39.908300
Longitude: -75.223140

SIC Code	Business Name	Franchise	Distance From Site in Miles	Employees	Sales
67990000	VLS INVESTMENTS INC. 6933 Ibis Pl Philadelphia, PA 19142		0.48 NW	2	\$140,000
82110000	SILVERCREST GLOBAL CONSOLIDATED LLC 6935 Ibis Pl Philadelphia, PA 19142		0.48 NW	0	\$0
99992222	THE GREENE'S LEARNING GARDEN LLC 6850 Grebe Pl Philadelphia, PA 19142		0.49 NW	0	\$0
42120000	PENSKE 7400 Holstein Ave Philadelphia, PA 19153		0.49 SW	2	\$90,000
73810101	BRINK'S, INCORPORATED 7400 Holstein Ave Philadelphia, PA 19153		0.49 SW	75	\$15,091,627
64110301	W MARTIN REESE 6943 Ibis Pl Philadelphia, PA 19142		0.49 NW	2	\$190,000
99992222	ROBERT C BENT 6708 Egret Pl Philadelphia, PA 19142		0.49 NW	0	\$0
99992222	ALFONSO JOSEPH PASSARO 7033 Lindbergh Blvd Philadelphia, PA 19153		0.49 NW	0	\$0
89990000	EVERGREEN JANITORIAL SERVICES, LLC 3009 S 68th St Philadelphia, PA 19142		0.49 NW	1	\$48,000
75210101	AIRPORT PARKING 7060 Essington Ave Philadelphia, PA 19153		0.50 SW	30	\$11,199,999
75429904	JESSIE'S PERSONAL TOUCH 7060 Essington Ave Philadelphia, PA 19153		0.50 SW	2	\$69,000
65310100	PHILLIP MOFFITT REAL ESTATE 7101 Lindbergh Blvd Philadelphia, PA 19153		0.50 NW	3	\$180,000
99992222	AERO TRON 7107 Lindbergh Blvd Philadelphia, PA 19153		0.51 NW	0	\$0
50150102	C & C AUTO PARTS II LLC 6308 Passyunk Ave Philadelphia, PA 19153		0.51 NE	3	\$350,000
75150000	ENTERPRISE LEASING COMPANY OF 7001 Essington Ave Philadelphia, PA 19153		0.52 SW	3	\$906,741
65310401	LORENZO D VOGHN RENTAL 6725 Egret Pl Philadelphia, PA 19142		0.53 NW	1	\$77,000

Data Note: Businesses are listed based on their proximity to the study area location. A maximum of 250 records can be displayed on one report.

Source: Copyright 2014 Dun & Bradstreet, Inc. All rights reserved. Esri Total Residential Population forecasts for 2014.

January 22, 2015

©2014 Esri

Page 9 of 16



Business Locations

6796 Essington Ave, Philadelphia,
Rings: 1, 2, 3 mile radii

Prepared by Esri
Latitude: 39.908300
Longitude: -75.223140

SIC Code	Business Name	Franchise	Distance From Site in Miles	Employees	Sales
50910000	TOP OF THE KEY, INC 6931 Grosbeak Pl Philadelphia, PA 19142		0.53 NW	2	\$340,000
99992222	LORD GAS PROMOTE 7114 Humming Bird Pl Phila, PA 19153		0.53 NW	0	\$0
82110000	WARREN COUNTY TRAINING SCHOOL NORTH 7018 Sheldrake Pl Philadelphia, PA 19153		0.54 NW	0	\$0
65120000	GOLD N PROPERTIES LLC 7118 Humming Bird Pl 2f Philadelphia, PA 19153		0.54 NW	2	\$130,000
84129901	THE TUN TAVERN HISTORICAL SOCIETY 6918 Waxwing Pl Phila, PA 19142		0.54 NW	2	\$91,000
99992222	OLDE INC 7126 Humming Bird Pl Philadelphia, PA 19153		0.55 NW	0	\$0
65310100	K.G. REALTY, LLC 7128 Humming Bird Pl Philadelphia, PA 19153		0.55 NW	2	\$130,000
73899999	GREGORY SANDERS 7115 Humming Bird Pl Philadelphia, PA 19153		0.56 NW	2	\$130,000
54110000	DOLLAR TREE 2910 S 70th St Ste 38 Philadelphia, PA 19142		0.56 NW	10	\$875,149
99992222	RAMI 98, INC. 2910 S 70th St Unit 5 Philadelphia, PA 19142		0.56 NW	0	\$0
54210200	GROVER MEAT MARKET 2910 S 70th St Philadelphia, PA 19142		0.56 NW	3	\$180,000
56510000	SABRINAS CLOSET 2910 S 70th St Philadelphia, PA 19142		0.56 NW	2	\$86,000
80920000	RENAL CARE PARTNERS OF PHILADELPHIA 2910 S 70th St Philadelphia, PA 19142		0.56 NW	0	\$0
75149902	DOLLAR THRIFTY 7500 Holstein Ave Philadelphia, PA 19153	75148009	0.56 SW	722	\$83,682,757
75130000	FIREFLY CAR RENTAL 7500 Holstein Ave Philadelphia, PA 19153		0.56 SW	2	\$100,000
43110000	US POST OFFICE 2904 S 70th St Philadelphia, PA 19142		0.56 NW	55	\$0

Data Note: Businesses are listed based on their proximity to the study area location. A maximum of 250 records can be displayed on one report.

Source: Copyright 2014 Dun & Bradstreet, Inc. All rights reserved. Esri Total Residential Population forecasts for 2014.

January 22, 2015

6796 Essington Ave

Philadelphia , PA 19148



Business Locations

6796 Essington Ave, Philadelphia,
Rings: 1, 2, 3 mile radii

Prepared by Esri
Latitude: 39.908300
Longitude: -75.223140

SIC Code	Business Name	Franchise	Distance From Site in Miles	Employees	Sales
54110201	7-11 2900 S 70th St Philadelphia, PA 19142	54118002	0.56 NW	8	\$1,002,655
73890000	THOMAS HATKOFF & ASSOC 7121 Humming Bird Pl Philadelphia, PA 19153		0.56 NW	1	\$76,000
99990001	DAKINI, INC Medical Tower Buildin Philadelphia, PA 19191		0.57 NW	0	\$488,888
73899999	CBB2007 INC 7046 Sheldrake Pl Philadelphia, PA 19153		0.57 NW	1	\$83,000
83519901	SAFE HANDS DAYCARE LLC 2950 S 70th St Philadelphia, PA 19142		0.57 NW	5	\$130,000
86610121	REDEEMER MORAVIAN CHURCH 2950 S 70th St Philadelphia, PA 19142		0.57 NW	2	\$130,000
50130105	DAVE S DELAWARE VALLEY TO 614359 Passyunk Ave Philadelphia, PA 19153		0.57 NE	2	\$260,000
65310100	JAMAICA BAY REALTY, LLC 7048 Sheldrake Pl Philadelphia, PA 19153		0.57 NW	2	\$110,000
73899999	KIM J RAKOSKY 3010 Dowitcher Pl Philadelphia, PA 19142		0.57 NW	1	\$81,000
73899999	TNX, LLC 7127 Humming Bird Pl Philadelphia, PA 19153		0.57 NW	3	\$140,000
73899999	PA 61 VETERAN VIETNAM WAR 6931 Waxwing Pl Phila, PA 19142		0.58 NW	1	\$57,000
17990000	JMC GENERAL CONTRACTING 7115 Phoebe Pl Philadelphia, PA 19153		0.58 NW	2	\$88,000
50460306	SINGER EQUIPMENT COMPANY, INC. 7300 Lindbergh Blvd Philadelphia, PA 19153		0.58 SW	30	\$38,337,284
87480000	US SEABOARD MARINE CONSULT 7235 Lindbergh Blvd Phila, PA 19153		0.58 NW	1	\$57,000
17319903	JDV ELECTRICAL CONTRACTORS 7237 Lindbergh Blvd Philadelphia, PA 19153		0.59 SW	2	\$120,000
73899999	JOSEPH VOCI 7237 Lindbergh Blvd Philadelphia, PA 19153		0.59 SW	2	\$130,000

Data Note: Businesses are listed based on their proximity to the study area location. A maximum of 250 records can be displayed on one report.

Source: Copyright 2014 Dun & Bradstreet, Inc. All rights reserved. Esri Total Residential Population forecasts for 2014.

January 22, 2015

©2014 Esri

Page 11 of 16

6796 Essington Ave

Philadelphia , PA 19148



Business Locations

6796 Essington Ave, Philadelphia,
Rings: 1, 2, 3 mile radii

Prepared by Esri
Latitude: 39.908300
Longitude: -75.223140

SIC Code	Business Name	Franchise	Distance From Site in Miles	Employees	Sales
99992222	JOHN DOMENICK PIZZI 6914 Reed Bird Pl Philadelphia, PA 19142		0.59 NW	0	\$0
73899999	GO TEXT GO LLC 6934 Reed Bird Pl Philadelphia, PA 19142		0.59 NW	2	\$100,000
89990000	CONTRACT SERVICE INNOVATIONS, LLC 6934 Reed Bird Pl Phila, PA 19142		0.59 NW	1	\$47,000
73899999	UKUBEA, TEKLE 7239 Mallard Pl Philadelphia, PA 19153		0.59 NW	3	\$230,000
83510000	TERESA LATCH MS 6735 Harley St Philadelphia, PA 19142		0.59 NW	1	\$44,000
99990001	BARTHCO INTERNATIONAL, INC. 7575 Holstein Ave Philadelphia, PA 19153		0.60 SW	0	\$219,189
50840518	AIRGAS USA LLC 7575 Holstein Ave Philadelphia, PA 19153		0.60 SW	3	\$415,655
45120000	WOLF D BARTH COMPANY INC 7575 Holstein Ave Philadelphia, PA 19153		0.60 SW	2	\$110,000
73599911	RED-D-ARC INC. 7575 Holstein Ave Philadelphia, PA 19153		0.60 SW	8	\$3,319,789
73890000	BARTHCO ASSOCIATES OF NEW YORK, L.L.C. 7575 Holstein Ave Philadelphia, PA 19153		0.60 SW	1	\$58,000
73890000	KLM ENTERPRISES, INC. 6944 Reed Bird Pl Philadelphia, PA 19142		0.60 NW	2	\$150,000
72310000	WATERS CAROL FIRST CLASS BEAUTY SALON 3034 S 72nd St Philadelphia, PA 19153		0.60 NW	7	\$170,000
65310104	HAJIME INVESTMENTS LLC 3032 S 72nd St Philadelphia, PA 19153		0.60 NW	4	\$290,000
50130201	MEDCO TOOL 3201 S 76th St Philadelphia, PA 19153		0.61 SW	0	\$37,800,000
82110000	YAMASEE EDUC FUND 3004 S 72nd St Phila, PA 19153		0.61 NW	0	\$0
51450200	HERR FOODS INCORPORATED 7548 Brewster Ave Philadelphia, PA 19153		0.61 SW	100	\$13,094,004

Data Note: Businesses are listed based on their proximity to the study area location. A maximum of 250 records can be displayed on one report.

Source: Copyright 2014 Dun & Bradstreet, Inc. All rights reserved. Esri Total Residential Population forecasts for 2014.

January 22, 2015

©2014 Esri

Page 12 of 16



Business Locations

6796 Essington Ave, Philadelphia,
Rings: 1, 2, 3 mile radii

Prepared by Esri
Latitude: 39.908300
Longitude: -75.223140

SIC Code	Business Name	Franchise	Distance From Site in Miles	Employees	Sales
99992222	TECHNOLOGY PROJECT FOR AFRICAN 7311 Lindbergh Blvd Philadelphia, PA 19153		0.61 SW	0	\$0
99992222	MCELVENNEY MAGIC, LLC 7302 Merganser Pl Philadelphia, PA 19153		0.62 SW	0	\$0
99992222	TRAN HUY & LOAN DO 6613 Harley St Philadelphia, PA 19142		0.62 NW	0	\$0
58129903	H & S CATERING, LLC 7219 Mallard Pl Philadelphia, PA 19153		0.62 NW	0	\$0
89990000	AMG QUALITY SERVICE 7219 Mallard Pl Phila, PA 19153		0.62 NW	1	\$48,000
99992222	THE VENUS GROUP L L C 7316 Merganser Pl Phila, PA 19153		0.62 SW	0	\$0
72310000	NU LOOKS BRAIDING SALON 6750 Grovers Ave Philadelphia, PA 19142		0.63 NW	2	\$69,000
99992222	DARIDE, INC. 7227 Mallard Pl Phila, PA 19153		0.63 NW	0	\$0
99992222	RCP NO 3 7227 Mallard Pl Philadelphia, PA 19153		0.63 NW	0	\$0
73820000	LORD'S SECURITY SYSTEMS, INC 7322 Merganser Pl Philadelphia, PA 19153		0.63 SW	2	\$160,000
99992222	CRIDDICKNOTES 6720 Grovers Ave Philadelphia, PA 19142		0.63 NW	0	\$0
99992222	K-VISION, LLC 6501 Essington Ave Phila, PA 19153		0.63 NE	0	\$0
41190103	STAGEDOOR LUXURY LIMOUSINE 7305 Merganser Pl Philadelphia, PA 19153		0.63 NW	2	\$32,000
51130000	MID-ATLANTIC MARKET AREA 7575 Brewster Ave Philadelphia, PA 19153		0.64 SW	19	\$2,282,177
73899999	KAQUI ASSOCIATE 7234 Shearwater Pl Phila, PA 19153		0.64 NW	1	\$57,000
99990000	ALL IN THE FAMILY, INC. 6512 Eastwick Ave Philadelphia, PA 19142		0.64 NW	0	\$0

Data Note: Businesses are listed based on their proximity to the study area location. A maximum of 250 records can be displayed on one report.

Source: Copyright 2014 Dun & Bradstreet, Inc. All rights reserved. Esri Total Residential Population forecasts for 2014.

January 22, 2015



Business Locations

6796 Essington Ave, Philadelphia,
Rings: 1, 2, 3 mile radii

Prepared by Esri
Latitude: 39.908300
Longitude: -75.223140

SIC Code	Business Name	Franchise	Distance From Site in Miles	Employees	Sales
23920606	THE SLIPCOVER STUDIO 7209 Shearwater Pl Philadelphia, PA 19153		0.65 NW	2	\$99,000
50130105	LIBERTY ENGINE PARTS, INC. 3250 S 76th St Ste 200 Philadelphia, PA 19153		0.65 SW	18	\$6,900,000
99992222	ONTARIO CLIFTON ONTARIO DUY CLIFTON 7308 Sanderling Pl Philadelphia, PA 19153		0.65 NW	0	\$0
73899999	LAMPHAM CORPORATION 2937 S 66th St Philadelphia, PA 19142		0.65 NW	2	\$91,000
65130000	UNICO VILLAGE 7199 Brant Pl Ofc Philadelphia, PA 19153		0.65 NW	11	\$1,398,651
73590000	SODA RENTAL SERVICE 6500 Eastwick Ave Philadelphia, PA 19142		0.65 NW	32	\$4,200,000
51490504	KATZ SODA DISPENSERS 6500 Eastwick Ave Philadelphia, PA 19142		0.65 NW	2	\$130,000
75380000	WHITMAN ENTERPRISES INC 6500 Eastwick Ave Philadelphia, PA 19142		0.65 NW	5	\$360,000
50939901	CARTEL USED AUTO PARTS 6330 Passyunk Ave Philadelphia, PA 19153		0.66 NE	20	\$3,000,000
73630000	INCLUDING STAFFING INC 2802 Bittern Pl Philadelphia, PA 19142		0.66 NW	2	\$160,000
99992222	STAFFORD-RECRUITING CO., LLC 2802 Bittern Pl Philadelphia, PA 19142		0.66 NW	0	\$0
83510000	VCR 7320 Sanderling Pl Philadelphia, PA 19153		0.66 NW	4	\$100,000
73899999	MICHAEL W JOHNSON 6743 Grovers Ave Philadelphia, PA 19142		0.66 NW	2	\$140,000
67990000	NORTHEASTERN CAPITAL GROUP LLC 7325 Merganser Pl Philadelphia, PA 19153		0.66 SW	2	\$140,000
65310000	KNOM MANAGEMENT GROUP 7324 Sanderling Pl Philadelphia, PA 19153		0.66 SW	1	\$100,000
99992222	DIVINE TOUCH MOBILE PHLEBOTOMY 6725 Grovers Ave Philadelphia, PA 19142		0.66 NW	0	\$0

Data Note: Businesses are listed based on their proximity to the study area location. A maximum of 250 records can be displayed on one report.

Source: Copyright 2014 Dun & Bradstreet, Inc. All rights reserved. Esri Total Residential Population forecasts for 2014.

January 22, 2015

6796 Essington Ave

Philadelphia , PA 19148



Business Locations

6796 Essington Ave, Philadelphia,
Rings: 1, 2, 3 mile radii

Prepared by Esri
Latitude: 39.908300
Longitude: -75.223140

SIC Code	Business Name	Franchise	Distance From Site in Miles	Employees	Sales
58120108	PASTA TRANSPORT 6723 Grovers Ave Philadelphia, PA 19142		0.66 NW	0	\$0
47890000	RASTA TRANSPORT 6723 Grovers Ave Philadelphia, PA 19142		0.66 NW	2	\$110,000
16110000	CARUSONE CONSTRUCTION, INC 3045 S 74th St Philadelphia, PA 19153		0.66 SW	30	\$3,900,000
45130000	DHL EXPRESS (USA), INC. 7600 Holstein Ave Philadelphia, PA 19153		0.66 SW	31	\$349,295
17940000	CACCIOLA EXCAVATING CO 6719 Grovers Ave Philadelphia, PA 19142		0.67 NW	2	\$100,000
17110000	121 POINT BREEZE TERMINAL, LLC 6310 Passyunk Ave Philadelphia, PA 19153		0.67 NE	5	\$450,000
73899999	AMENTO, C.C. AND ROBERT M. D'INTINO 3043 S 74th St Philadelphia, PA 19153		0.67 SW	1	\$57,000
86990000	PUJHUN DISTRICT DESCENDANT 6709 Grovers Ave Philadelphia, PA 19142		0.67 NW	2	\$100,000
89990000	BUILDING RECON SERVICES INC. 7328 Sanderling Pl Philadelphia, PA 19153		0.67 SW	1	\$47,000
75149902	ENTERPRISE RENT A CAR 6401 Passyunk Ave Philadelphia, PA 19153	75148020	0.67 NE	7	\$2,754,938
72310000	ZORA'S HAIR GALLERY 7333 Merganser Pl Philadelphia, PA 19153		0.67 SW	1	\$40,000
57190102	CHINA HOUSE NO. 2 LLC 7030 Grovers Ave Philadelphia, PA 19153		0.68 NW	1	\$55,000
58120103	LAM, YEE NGAM & TANG YUNG LAM 7030 Grovers Ave Philadelphia, PA 19153		0.68 NW	0	\$0
99992222	HASSANS WORLD NET 6604 Cormorant Pl Philadelphia, PA 19142		0.68 NW	0	\$0
73899999	REMO TRANS, INC. 6732 Dorel St Philadelphia, PA 19142		0.68 NW	1	\$110,000
72170100	MAVERICK CARPET CLEANING 6608 Cormorant Pl Philadelphia, PA 19142		0.68 NW	5	\$210,000

Data Note: Businesses are listed based on their proximity to the study area location. A maximum of 250 records can be displayed on one report.

Source: Copyright 2014 Dun & Bradstreet, Inc. All rights reserved. Esri Total Residential Population forecasts for 2014.

January 22, 2015

©2014 Esri

Page 15 of 16



Business Locations

6796 Essington Ave, Philadelphia,
Rings: 1, 2, 3 mile radii

Prepared by Esri
Latitude: 39.908300
Longitude: -75.223140

SIC Code	Business Name	Franchise	Distance From Site in Miles	Employees	Sales
73899999	ODONNELL & TARELLI INC 2824 S 65th St Philadelphia, PA 19142		0.68 NW	1	\$93,000
73899999	J.E.M. PEACE OF MIND LLC 2925 S 66th St Philadelphia, PA 19142		0.68 NW	1	\$59,000
59470103	SPECIAL CREATIONS 7337 Merganser Pl Philadelphia, PA 19153		0.68 SW	1	\$51,000
99992222	AMADOU A SAWANE 7235 Shearwater Pl Philadelphia, PA 19153		0.68 NW	0	\$0
47890000	AMIL TRANSPORTATION CO. 7311 Sanderling Pl Philadelphia, PA 19153		0.68 NW	2	\$110,000
07829903	FRED'S LAWN & TREE SERVICE 6611 Cormorant Pl Philadelphia, PA 19142		0.68 NW	5	\$150,000
41210000	ARM CAB 7315 Sanderling Pl Philadelphia, PA 19153		0.69 NW	2	\$58,000
73899999	CORNITCHER 2919 S 66th St Philadelphia, PA 19142		0.69 NW	2	\$120,000
59449901	MY SISTA JEWEL BOX 2919 S 66th St Philadelphia, PA 19142		0.69 NW	2	\$110,000
73899999	I. D. S. ENTERPRISE INC 2841 S 65th St Philadelphia, PA 19142		0.69 NW	3	\$230,000
73790000	POCKET SOLUTIONS 3029 S 74th St Philadelphia, PA 19153		0.69 SW	2	\$110,000
41210000	FATIADIJA CAB CO 6739 Dorel St Philadelphia, PA 19142		0.69 NW	2	\$130,000

Data Note: Businesses are listed based on their proximity to the study area location. A maximum of 250 records can be displayed on one report.

Source: Copyright 2014 Dun & Bradstreet, Inc. All rights reserved. Esri Total Residential Population forecasts for 2014.

January 22, 2015



Traffic Count Profile

6796 Essington Ave, Philadelphia, Pennsylvania, 19153
Rings: 1, 2, 3 mile radii

Prepared by Esri
Latitude: 39.908300
Longitude: -75.223140

Distance:	Street:	Closest Cross-street:	Year of Count:	Count:
0.27	Essington Ave	S 67th St (0.10 miles N)	2005	18,000
0.31	S 70th St	Holstein Ave (0.05 miles SE)	2010	10,374
0.47	Lindbergh Blvd	Eastwick Ave (0.09 miles N)	2010	13,058
0.54	Lindbergh Blvd	S 72nd St (0.03 miles NE)	1996	19,124
0.59	Essington Ave	Mingo Ave (0.09 miles S)	2010	13,937
0.67	Lindbergh Blvd	S 74th St (0.02 miles NE)	2010	25,980
0.67	Passyunk Ave	S 63rd St (0.06 miles E)	2010	20,831
0.75	S 63rd St	Eastwick Ave (0.14 miles NW)	2010	13,105
0.77	Lindbergh Blvd	S Simpson St (0.02 miles SW)	2010	15,484
0.79	S 70th St	Dicks Ave (0.03 miles SE)	2010	10,643
0.81	S 65th St	Guyer Ave (0.01 miles SE)	2010	4,608
0.83	S 69th St	Garman St (0.02 miles SE)	2000	1,110
0.86	Buist Ave	S Carroll St (0.02 miles SW)	2010	4,995
0.92	Buist Ave	S 72nd St (0.01 miles SW)	2010	4,687
0.92	S 67th St	Buist Ave (0.05 miles SE)	2000	2,860
0.93	Penrose Ave	Bartram Ave (0.53 miles SW)	2009	77,479
0.96	Lindbergh Blvd	S 62nd St (0.01 miles NE)	2010	9,717
0.97	Passyunk Ave	S 61st St (0.07 miles E)	2010	33,861
0.97	Elmwood Ave	S Hobson St (0.02 miles NE)	2010	5,130
0.97	S 61st St	Eastwick Ave (0.33 miles NW)	2010	19,299
0.99	Island Ave	Tanager Pl (0.00 miles)	2010	22,660
1.00	Island Ave	Lindbergh Blvd (0.21 miles N)	2010	33,628
1.00	S 65th St	Dickens Ave (0.02 miles SE)	2005	4,500
1.04	S 63rd St	Theodore St (0.02 miles NW)	2002	5,200
1.04	Elmwood Ave	S Lloyd St (0.03 miles SW)	2005	3,600
1.04	Bartram Ave	Mingo Ave (0.06 miles W)	2010	28,289
1.05	Bartram Ave	Holstein Ave (0.02 miles E)	2010	30,597
1.08	S 71st St	Wheeler St (0.02 miles SE)	2006	2,445
1.09	I- 95	Essington Ave (0.10 miles W)	2006	112,805
1.10	S 70th St	Grays Ave (0.02 miles SE)	2007	10,255

Data Note:The Traffic Profile displays up to 30 of the closest available traffic counts within the largest radius around your site. The years of the counts in the database range from 2013 to 1963. Just over 68% of the counts were taken between 2001 and 2013 and 86% of the counts were taken in 1997 or later. Traffic counts are identified by the street on which they were recorded, along with the distance and direction to the closest cross-street. Distances displayed as 0.00 miles (due to rounding), are closest to the site. A traffic count is defined as the two-way Average Daily Traffic (ADT) that passes that location.

Source: ©2013 MPSI Systems Inc. d.b.a. DataMetrix®

January 22, 2015