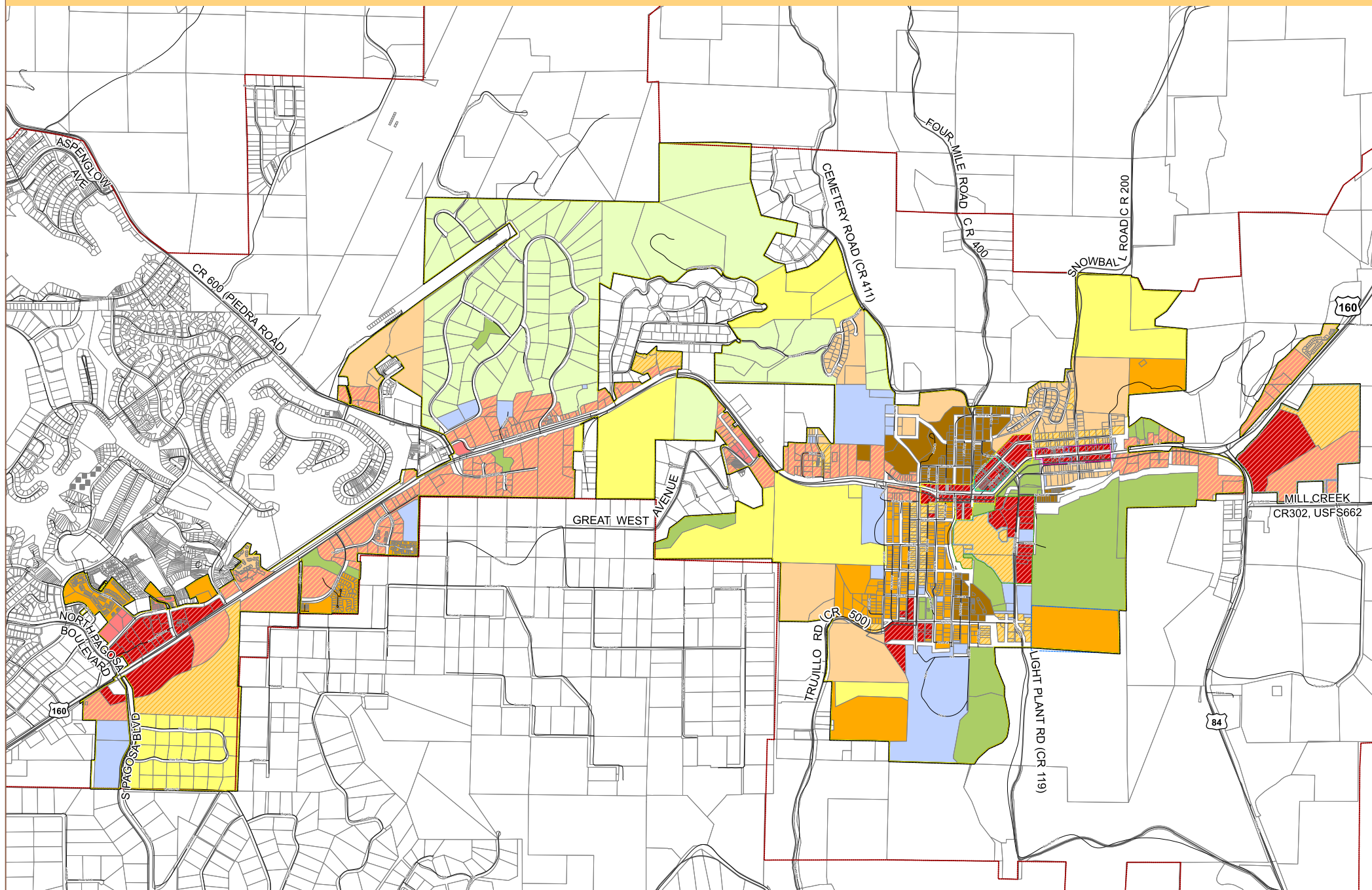


Town Zoning Map | Town of Pagosa Springs



RESIDENTIAL

- Agricultural/Residential (R-A)
- Rural Transition (R-T)
- Town Residential-Low Density (R-6)
- Town Residential-Medium Density (R-12)
- Town Residential-High Density (R-18)

MIXED-USE

- Mixed-Use Residential (MU-R)
- Mixed-Use Corridor (MU-C)
- Mixed-Use Town Center (MU-TC)

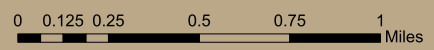
NON-RESIDENTIAL AND OTHER

- Commercial (C)
- Light Industrial (LI)
- Public/Quasi-Public (PS)
- Open Space (OS)

OVERLAY DISTRICTS

- Historical District (HD)
- Downtown Business and Lodging (ODB)
- Downtown East Village (ODE)
- Hot Springs Boulevard (OHSB)
- Planned Development (PD)

- Planning Area Boundary
- Town Boundary
- Vested Property Rights



See Ordinance No. 709 establishing vested property rights on Lots 3 thru 8, Block 28, Townsite of Pagosa Springs.
 See Ordinance No. 710 establishing vested property rights on Lots 31 thru 33, Block 28, Townsite of Pagosa Springs.
 See Ordinance No. 722 establishing vested property rights for Mountain Crossings Development.
 See Ordinance No. 772 establishing vested property rights for Springs Development.

Adopted February 3, 2009
 Updated December 16, 2013

