

OFFICE SPACE FOR LEASE

1715 IRON HORSE DRIVE, SUITE 128

LONGMONT, COLORADO 80501



Click here for VIRTUAL TOUR



1,558 SF OFFICE SPACE  
FOR LEASE

RE/MAX ELEVATE

724 Main Street  
Louisville, CO 80027



PRESENTED BY:

KEITH KANEMOTO, SIOR

Broker Associate  
cell: (303) 472-2222  
keith@kanemoto.com

The calculations and data presented are deemed to be accurate, but not guaranteed. They are intended for the purpose of illustrative projections and analysis. The information provided is not intended to replace or serve as substitute for any legal, accounting, investment, real estate, tax or other professional advice, consultation or service. The user of this software should consult with a professional in the respective legal, accounting, tax or other professional area before making any decisions.



## Property Summary

---

Lease Rate:	\$14.00 PSF + NNN
2026 Triple Nets:	\$19.13 PSF
Available SF:	1,558
Year Built:	1999
Zoning:	Mixed Use Employment

## Property Overview

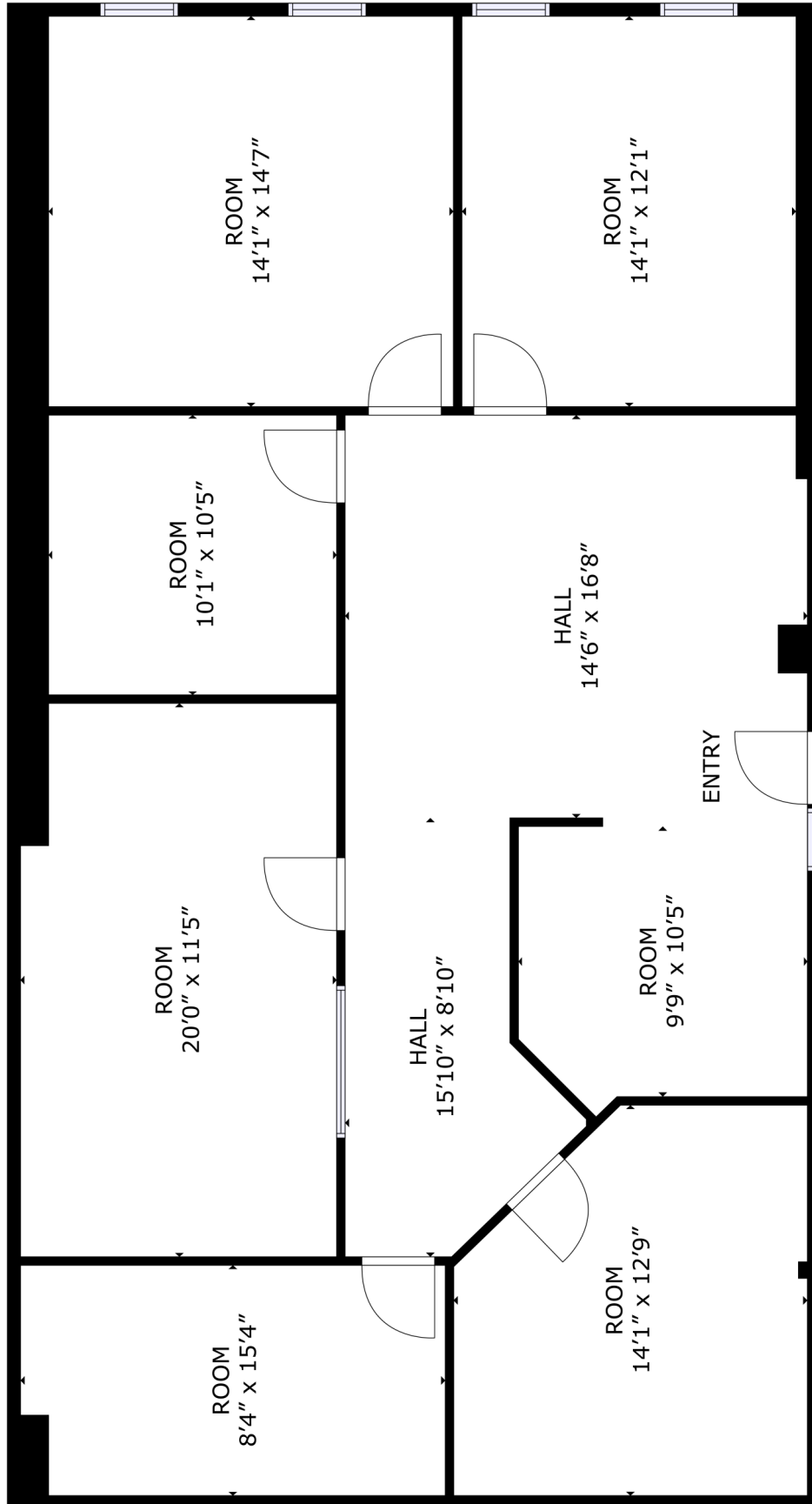
---

Now available for lease, this 1,558 square foot office condominium located in southeast Longmont is ideal for legal, medical, financial, tech, or a multitude of other professional uses, offering a polished environment with excellent functionality. It consists of a large reception/bullpen space, 5 offices and a conference room. This well-appointed space offers modern finishes and a professional setting that will impress clients and support team productivity. Ample parking, and easy access to Highway 119 and I-25, and close to many amenities.

## VIRTUAL TOUR

---

<https://rem.ax/1715IH128>



**1715 Iron Horse Drive, Suite 128**

SIZES AND DIMENSIONS ARE APPROXIMATE, ACTUAL MAY VARY.

POR 1

