

RETAIL SPACE FOR LEASE

1630 MAIN STREET, SUITE 103

LONGMONT, COLORADO 80501



CLICK HERE FOR VIRTUAL TOUR



1,350 SF RETAIL/OFFICE SPACE
FOR LEASE

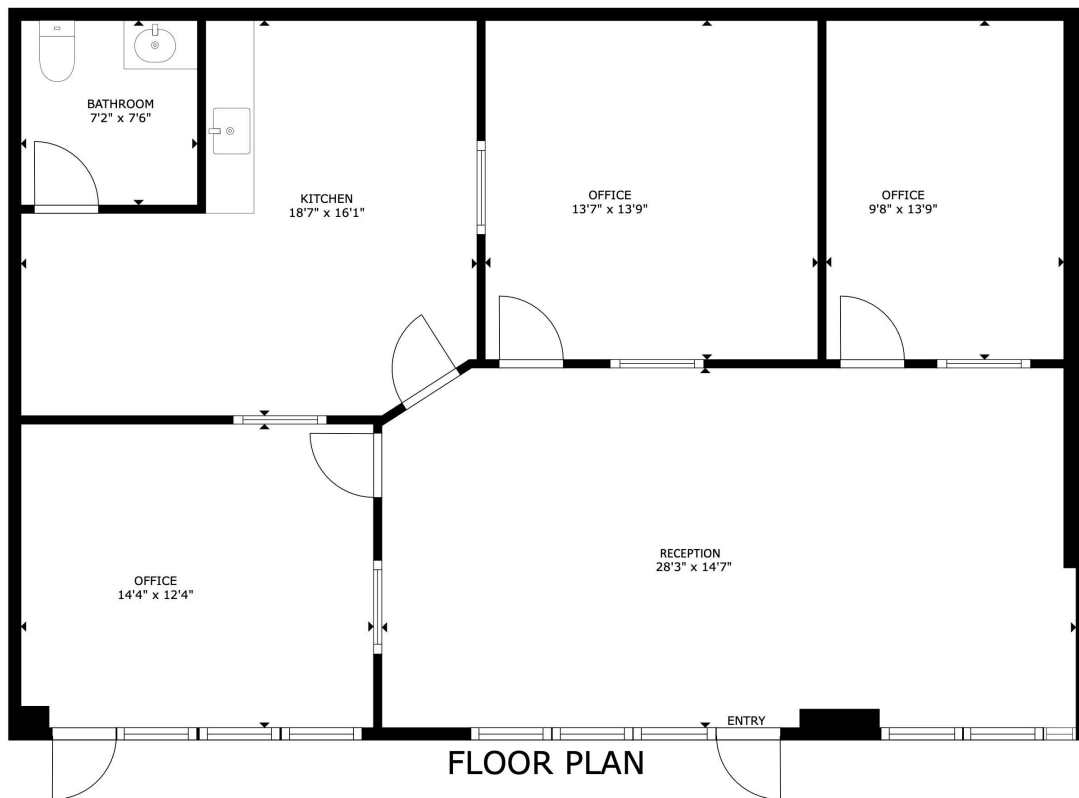
RE/MAX ELEVATE
724 Main Street
Louisville, CO 80027



PRESENTED BY:

KEITH KANEMOTO, SIOR
Broker Associate
cell: (303) 472-2222
keith@kanemoto.com

The calculations and data presented are deemed to be accurate, but not guaranteed. They are intended for the purpose of illustrative projections and analysis. The information provided is not intended to replace or serve as substitute for any legal, accounting, investment, real estate, tax or other professional advice, consultation or service. The user of this software should consult with a professional in the respective legal, accounting, tax or other professional area before making any decisions.



1630 Main Street, Suite 103

SIZES AND DIMENSIONS ARE APPROXIMATE, ACTUAL MAY VARY.

Property Summary

Lease Rate:	\$15.00 PSF + NNN
Estimated Triple Nets:	\$8.85 PSF
Available SF:	1,350
Zoning:	Mixed Use Corridor

Property Overview

1,350 square feet of retail space available for lease in a well-established shopping center in North Longmont. This versatile space consists of 3 offices, a large reception/bullpen area, kitchen and one restroom, and is suitable for various retail, specialty services, showroom, office-retail uses, and more. Large storefront windows provide excellent natural light and strong visibility within the center.

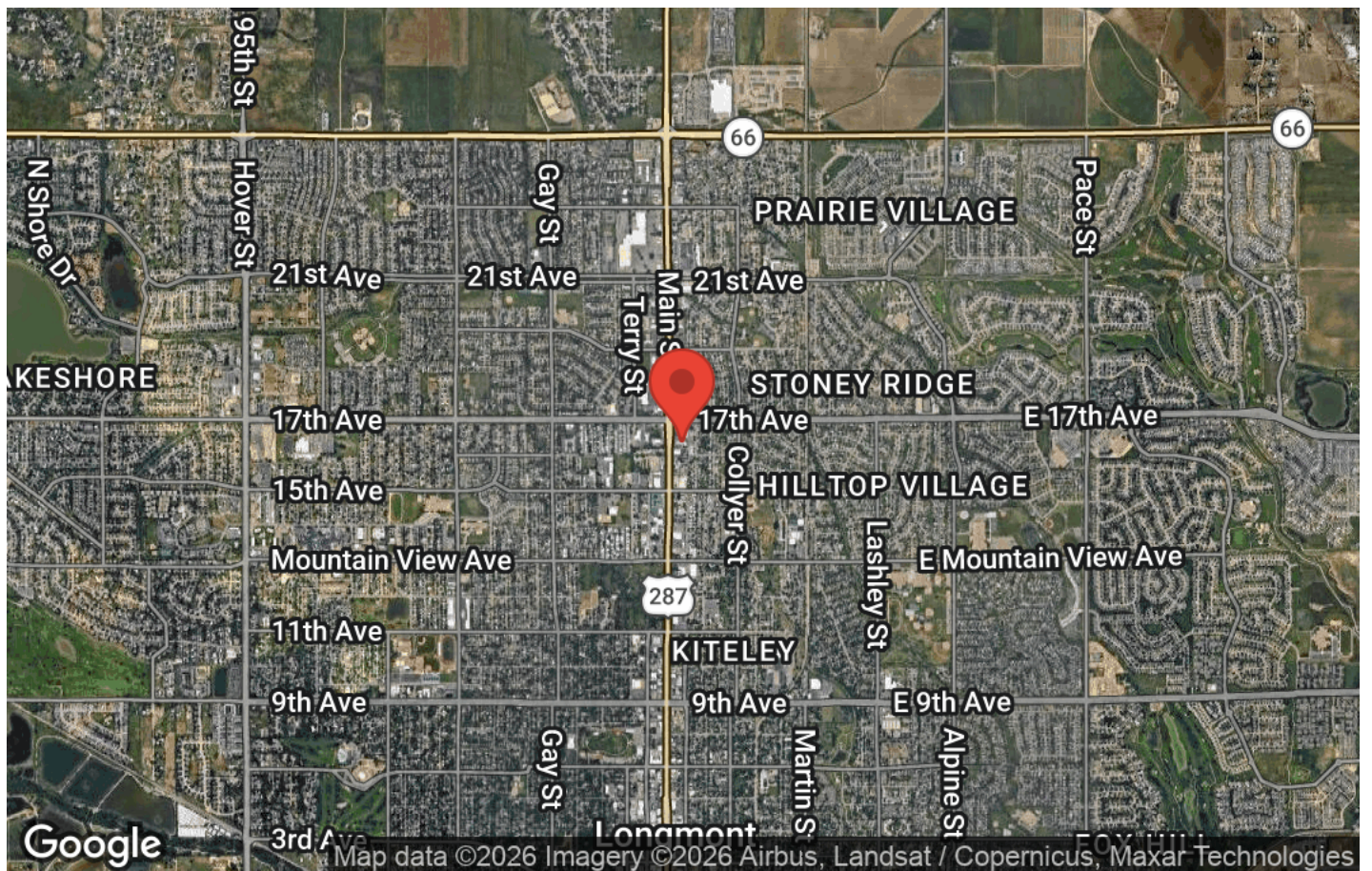
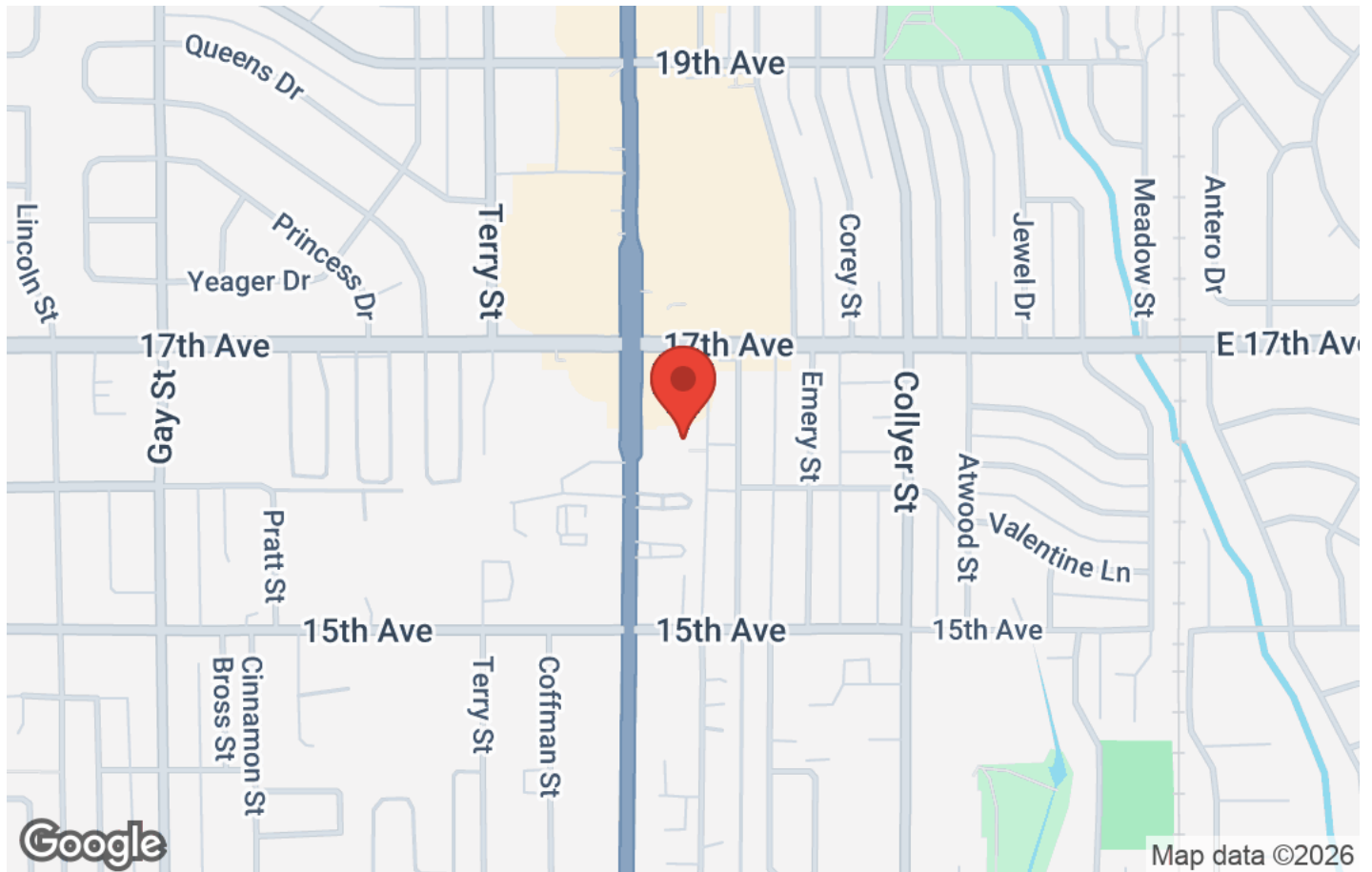
The property features ample on-site parking, professional management, and prominent signage opportunities along a busy commercial corridor.

Please give us a call for more information or to schedule a tour!

VIRTUAL TOUR

<https://rem.ax/1630Main103>

LOCATION MAPS



The calculations and data presented are deemed to be accurate, but not guaranteed. They are intended for the purpose of illustrative projections and analysis. The information provided is not intended to replace or serve as substitute for any legal, accounting, investment, real estate, tax or other professional advice, consultation or service. The user of this software should consult with a professional in the respective legal, accounting, tax or other professional area before making any decisions.

