

AVAILABLE

11300 Iron Bridge Rd.
Chester, VA 23831



Exclusive Agent:

BYRON HOLMES, CCIM, SIOR
(804) 521-1448
byron@porterinc.com

HIGHLIGHTS

- 1,190 SF +/- Available Suite B
- Zoned O-2
- FOR LEASE: \$19.95/SF includes water/sewer & landscaping services
- CAM: \$115/Month

4801 Radford Avenue | P.O. Box 6482
Richmond, VA 23230
www.porterinc.com
804-353-7994

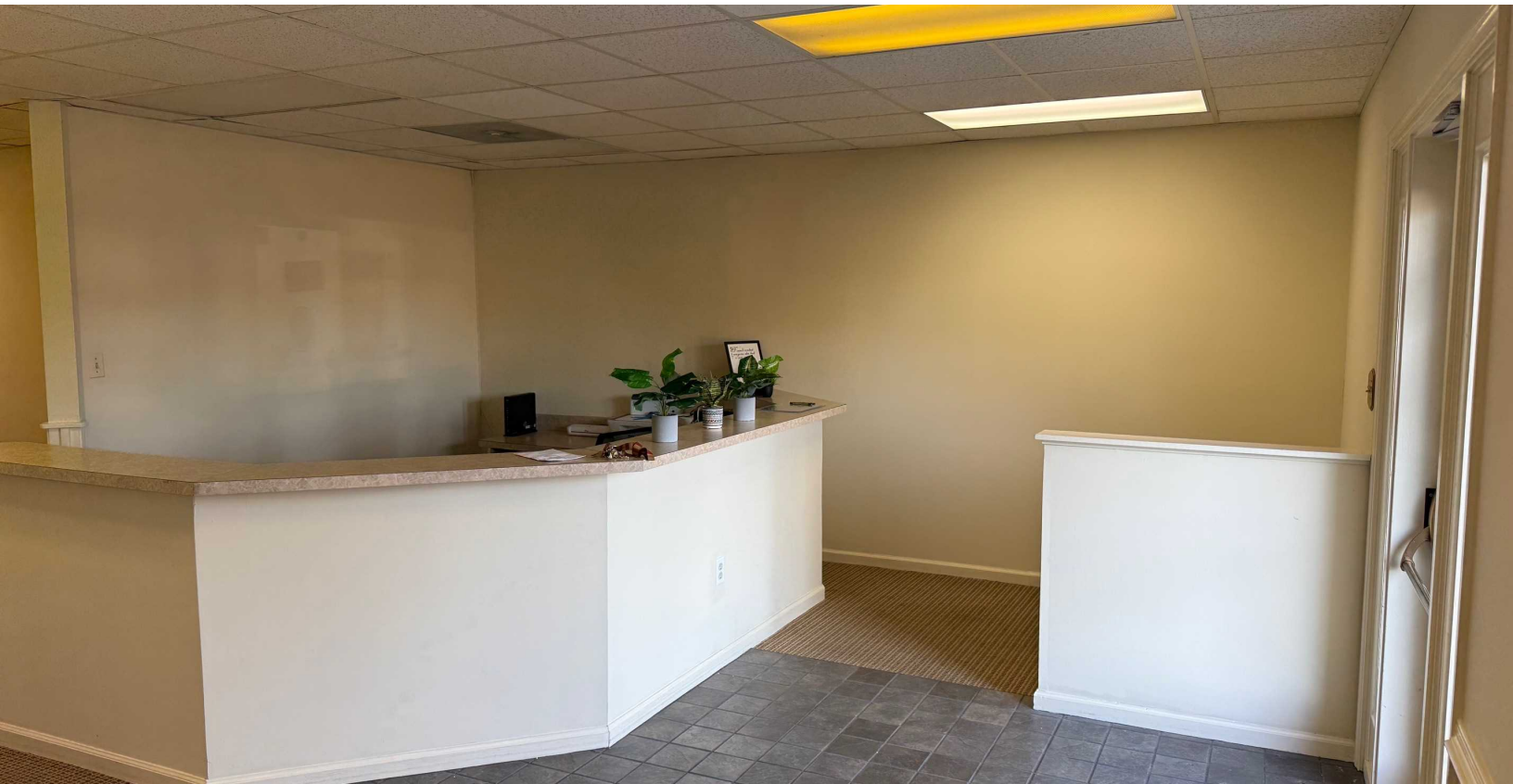
PORTER
R E A L T Y



This information has been prepared by Porter Realty Company, Inc. for marketing purposes only. No representation or warranty, expressed or implied, is made as to the accuracy of the foregoing information. Terms of sale or lease and availability are subject to change or withdrawal without notice.

PROPERTY PHOTOS

11300 Iron Bridge Road | Chester, VA 23831



Byron Holmes, CCIM, SIOR
(804) 521-1448
byron@porterinc.com



Porter Realty Company, Inc. | 4801 Radford Avenue | P.O. Box 6482 | Richmond, VA 23230 | www.porterinc.com

This information has been prepared by Porter Realty Company, Inc. for marketing purposes only. No representation or warranty, expressed or implied, is made as to the accuracy of the foregoing information. Terms of sale or lease and availability are subject to change or withdrawal without notice.

PROPERTY PHOTOS

11300 Iron Bridge Road | Chester, VA 23831



Byron Holmes, CCIM, SIOR
(804) 521-1448
byron@porterinc.com

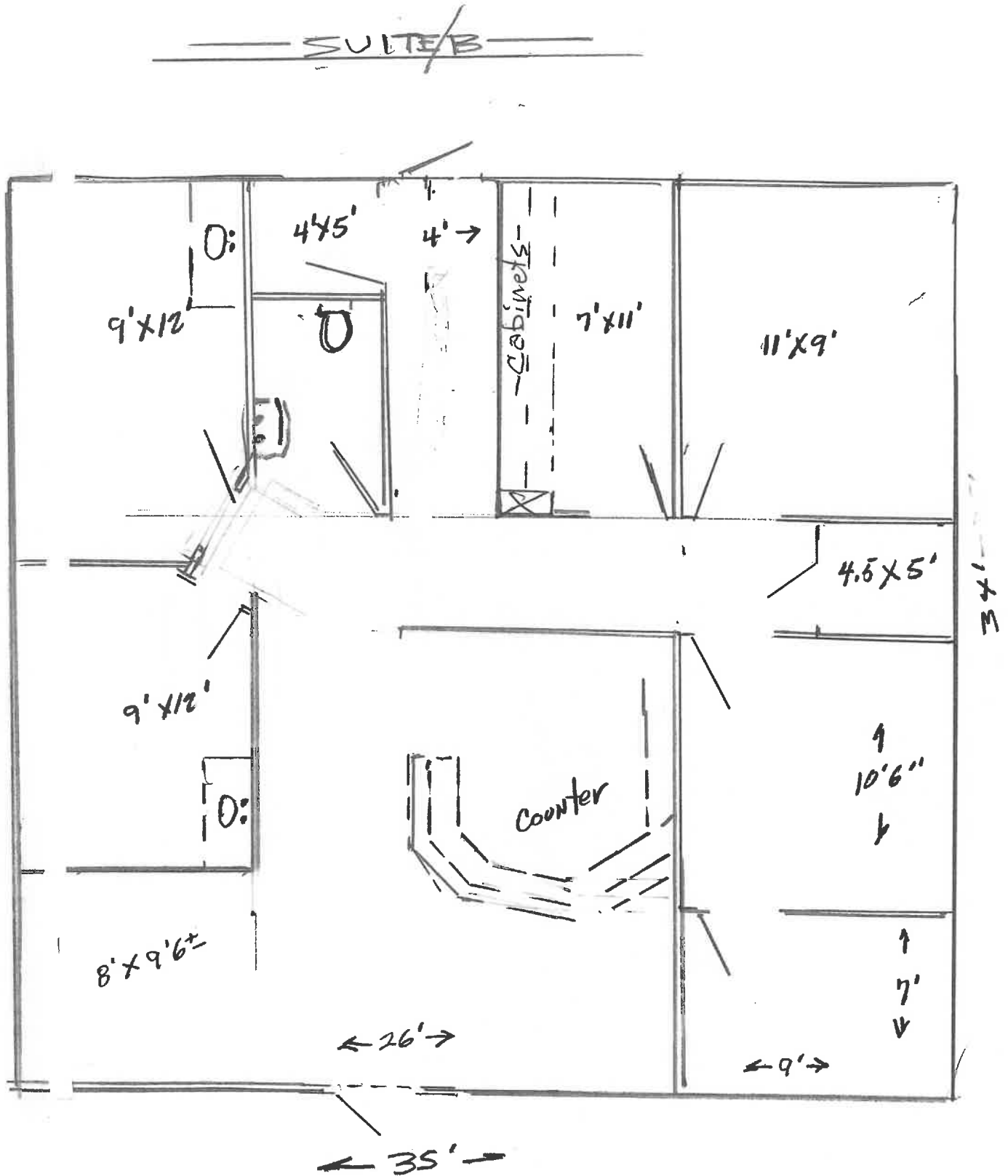


Porter Realty Company, Inc. | 4801 Radford Avenue | P.O. Box 6482 | Richmond, VA 23230 | www.porterinc.com

This information has been prepared by Porter Realty Company, Inc. for marketing purposes only. No representation or warranty, expressed or implied, is made as to the accuracy of the foregoing information. Terms of sale or lease and availability are subject to change or withdrawal without notice.

FLOOR PLAN

11300 Iron Bridge Road | Chester, VA 23831



Byron Holmes, CCIM, SIOR
(804) 521-1448
byron@porterinc.com

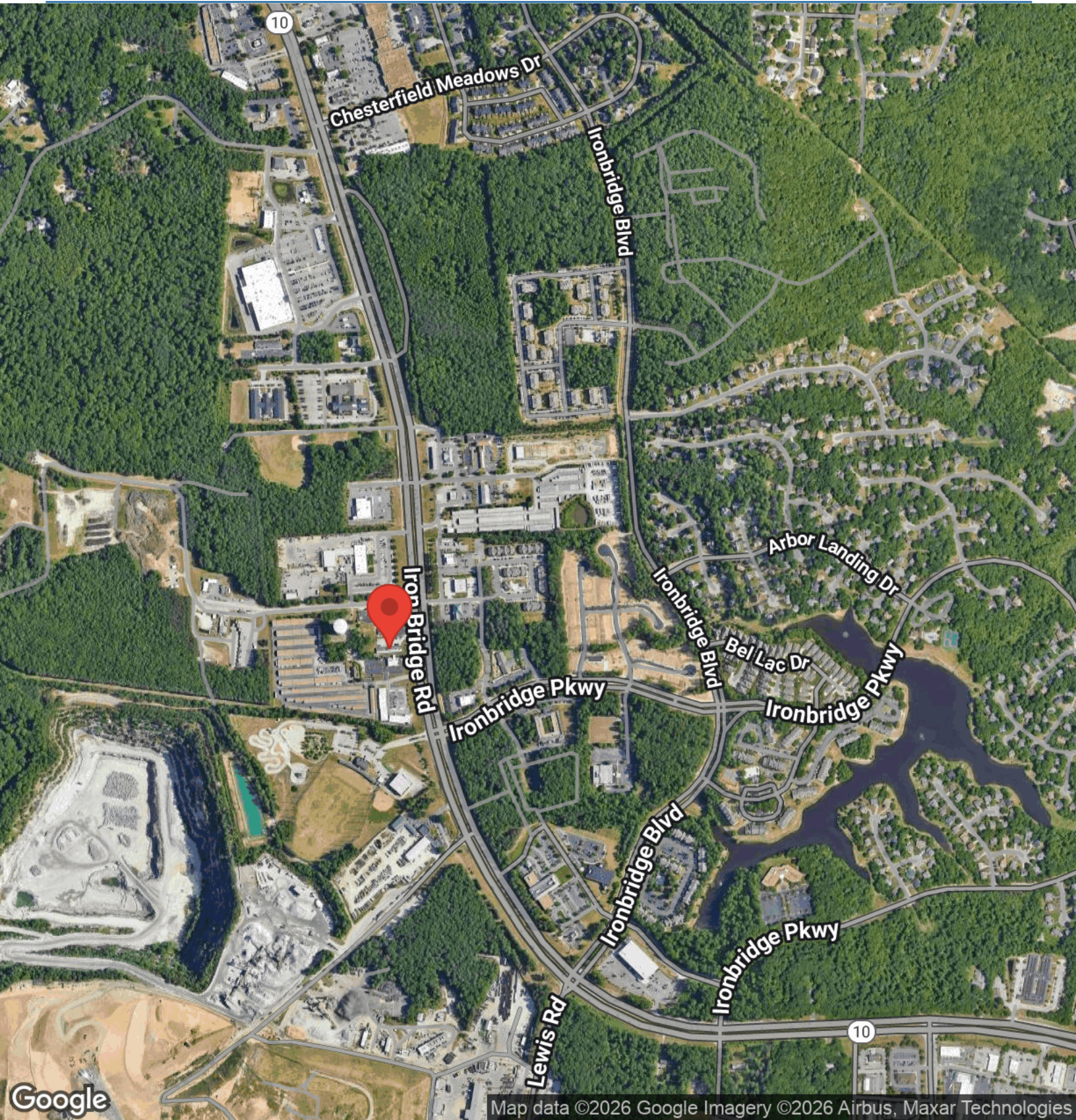


Porter Realty Company, Inc. | 4801 Radford Avenue | P.O. Box 6482 | Richmond, VA 23230 | www.porterinc.com

This information has been prepared by Porter Realty Company, Inc. for marketing purposes only. No representation or warranty, expressed or implied, is made as to the accuracy of the foregoing information. Terms of sale or lease and availability are subject to change or withdrawal without notice.

AERIAL MAP

11300 Iron Bridge Road | Chester, VA 23831



Byron Holmes, CCIM, SIOR
(804) 521-1448
byron@porterinc.com



Porter Realty Company, Inc. | 4801 Radford Avenue | P.O. Box 6482 | Richmond, VA 23230 | www.porterinc.com

This information has been prepared by Porter Realty Company, Inc. for marketing purposes only. No representation or warranty, expressed or implied, is made as to the accuracy of the foregoing information. Terms of sale or lease and availability are subject to change or withdrawal without notice.