

AVAILABLE

Stonehaven Estates Drive/Walnut Hill Drive 12154 Walnut Hill Drive, Rockville, VA 23146



Exclusive Agent:

KEVIN COX, SIOR
(804) 521-1468
Kevin@porterinc.com

HIGHLIGHTS

- 181 Acres +/- Total
- Includes 30 Acre +/- Spring Fed Ski Lake
- Man-Made Ski Mountain
- South Anna River Frontage ~2,200 Ft
- Zoned A-1
- ~10 Minutes to Short Pump, VA
- ~10 Minutes to I-64
- Hanover County/South Anna District
- Preliminary Plans done for (14) 10+ Acre Lots
- FOR SALE: CALL FOR INFORMATION

4801 Radford Avenue | P.O. Box 6482
Richmond, VA 23230
www.porterinc.com
804-353-7994

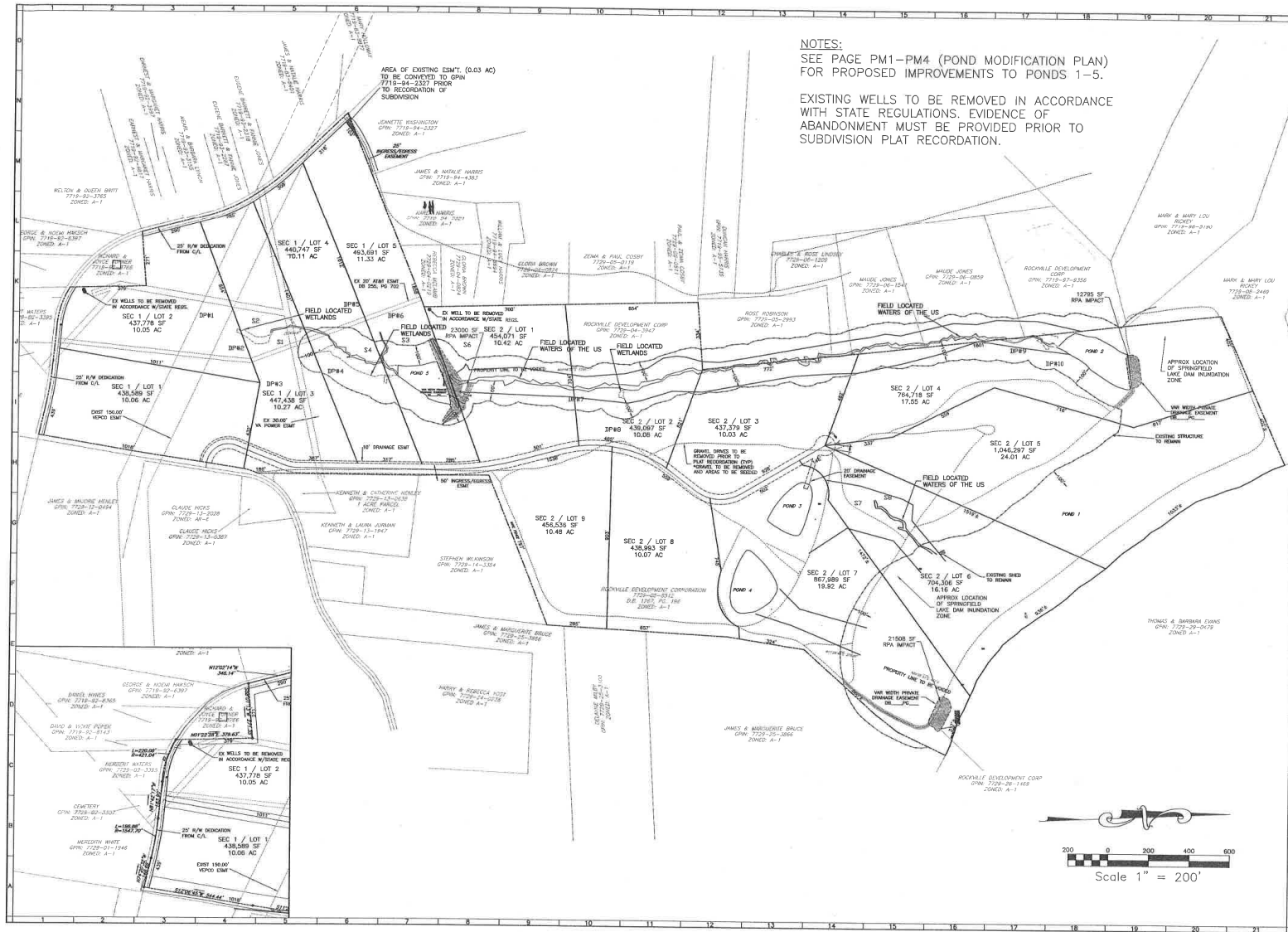
PORTER
R E A L T Y



This information has been prepared by Porter Realty Company, Inc. for marketing purposes only. No representation or warranty, expressed or implied, is made as to the accuracy of the foregoing information. Terms of sale or lease and availability are subject to change or withdrawal without notice.

CONSTRUCTION PLAN

12154 Walnut Hill Drive | Rockville, VA 23146



NOTES:
SEE PAGE PM1-PM4 (POND MODIFICATION PLAN) FOR PROPOSED IMPROVEMENTS TO PONDS 1-5.

EXISTING WELLS TO BE REMOVED IN ACCORDANCE WITH STATE REGULATIONS. EVIDENCE OF ABANDONMENT MUST BE PROVIDED PRIOR TO SUBDIVISION PLAT RECORDATION.



www.balzer.cc
Rockville
New River Valley
Richmond
Shannon
Northampton

Dalzer and Associates, Inc.
1208 Corporate Circle
Roanoke, VA 24018
540-773-0680
FAX 540-772-8650

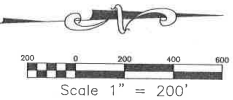


STONEHAVEN
SUBDIVISION
OVERALL LAYOUT
SOUTH ANNA DISTRICT
HANOVER COUNTY, VIRGINIA

DRAWN BY: BMS
DESIGNED BY: BMS
CHECKED BY: ETC
DATE: 4-11-11
SCALE: 1"=200'

REVISIONS:
12-22-11
7-27-12
1-29-16
1-15-18

SHEET NO.
2 OF 21
JOB NO. 100500348.00



Kevin Cox, SIOR
(804) 521-1468
Kevin@porterinc.com

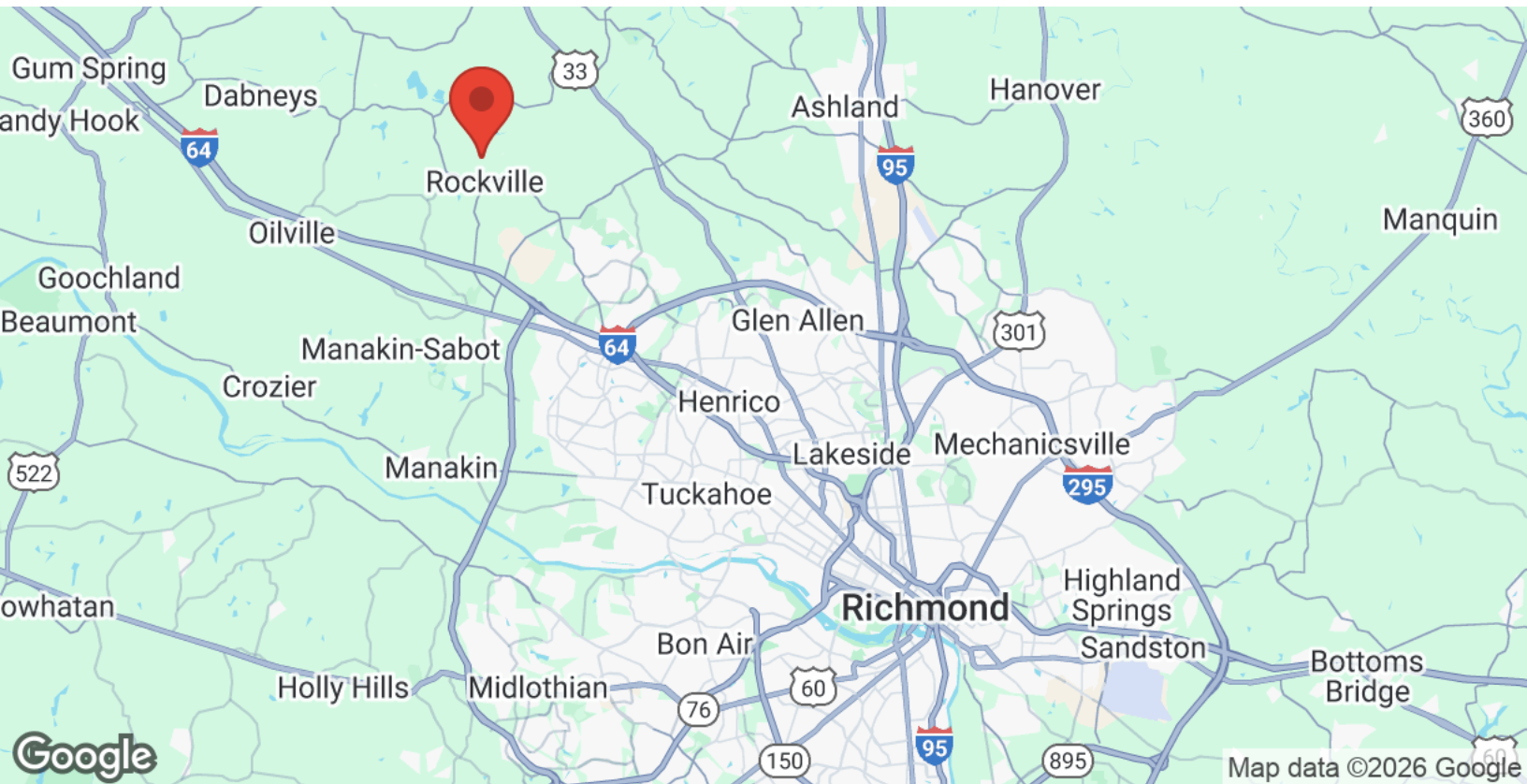
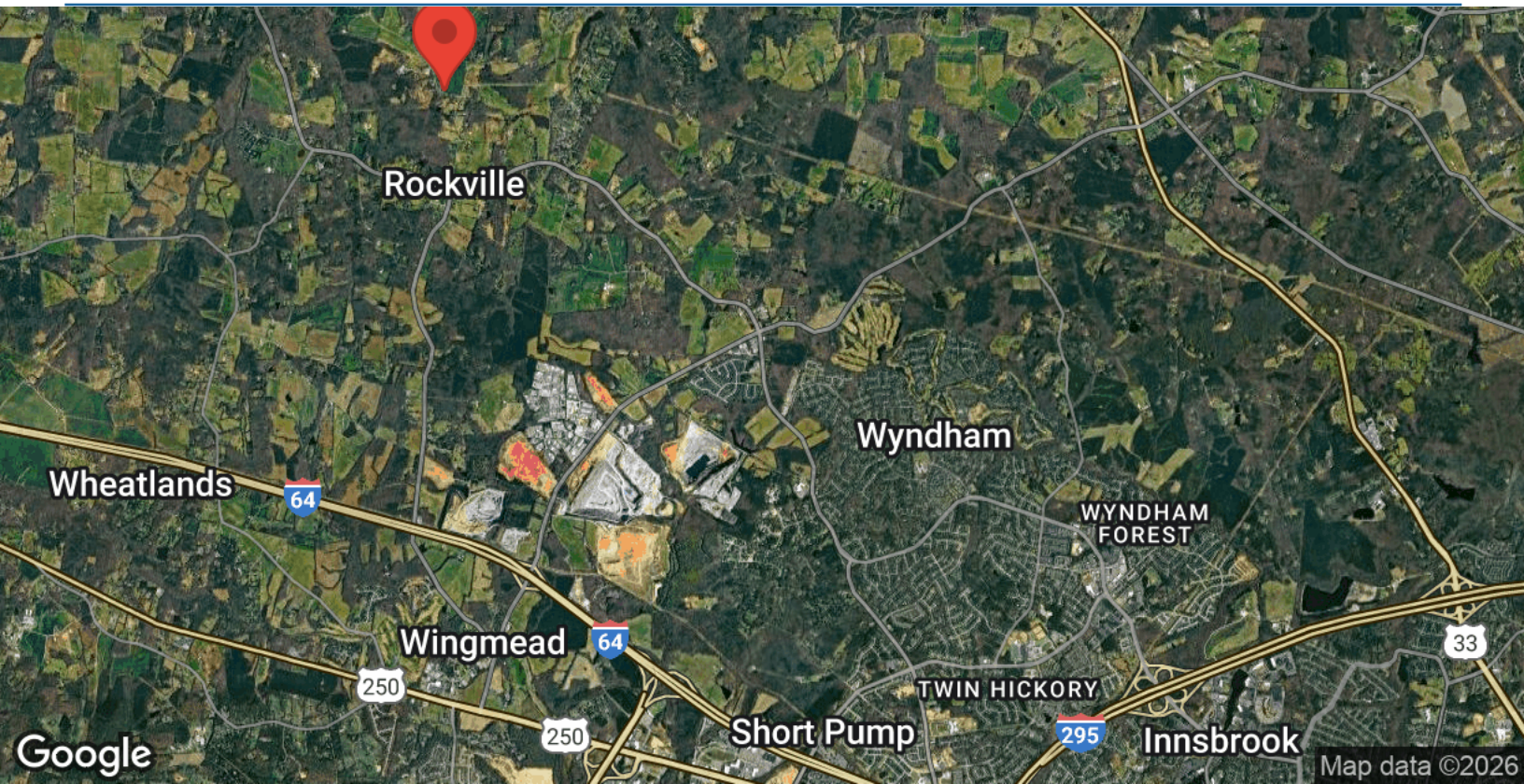


Porter Realty Company, Inc. | 4801 Radford Avenue | P.O. Box 6482 | Richmond, VA 23230 | www.porterinc.com

This information has been prepared by Porter Realty Company, Inc. for marketing purposes only. No representation or warranty, expressed or implied, is made as to the accuracy of the foregoing information. Terms of sale or lease and availability are subject to change or withdrawal without notice.

LOCATION MAPS

12154 Walnut Hill Drive | Rockville, VA 23146



Kevin Cox, SIOR
(804) 521-1468
Kevin@porterinc.com



Porter Realty Company, Inc. | 4801 Radford Avenue | P.O. Box 6482 | Richmond, VA 23230 | www.porterinc.com

This information has been prepared by Porter Realty Company, Inc. for marketing purposes only. No representation or warranty, expressed or implied, is made as to the accuracy of the foregoing information. Terms of sale or lease and availability are subject to change or withdrawal without notice.