

AVAILABLE

Charles City Rd - RIC Airport Henrico County, VA 23231



Exclusive Agent:

ROBERT PORTER III
(804) 521-1455
rep3@porterinc.com

HIGHLIGHTS

- 94.352 AC in Henrico County
- Proximate to Richmond International Airport
- Planned Industry (Industrial) in Henrico Comp Plan; Currently A-1
- Access to I-64/I-295/895 Nearby
- 1/3 Mile Charles City Rd Frontage
- For Sale: Call For Information

4801 Radford Avenue | P.O. Box 6482
Richmond, VA 23230
www.porterinc.com
804-353-7994

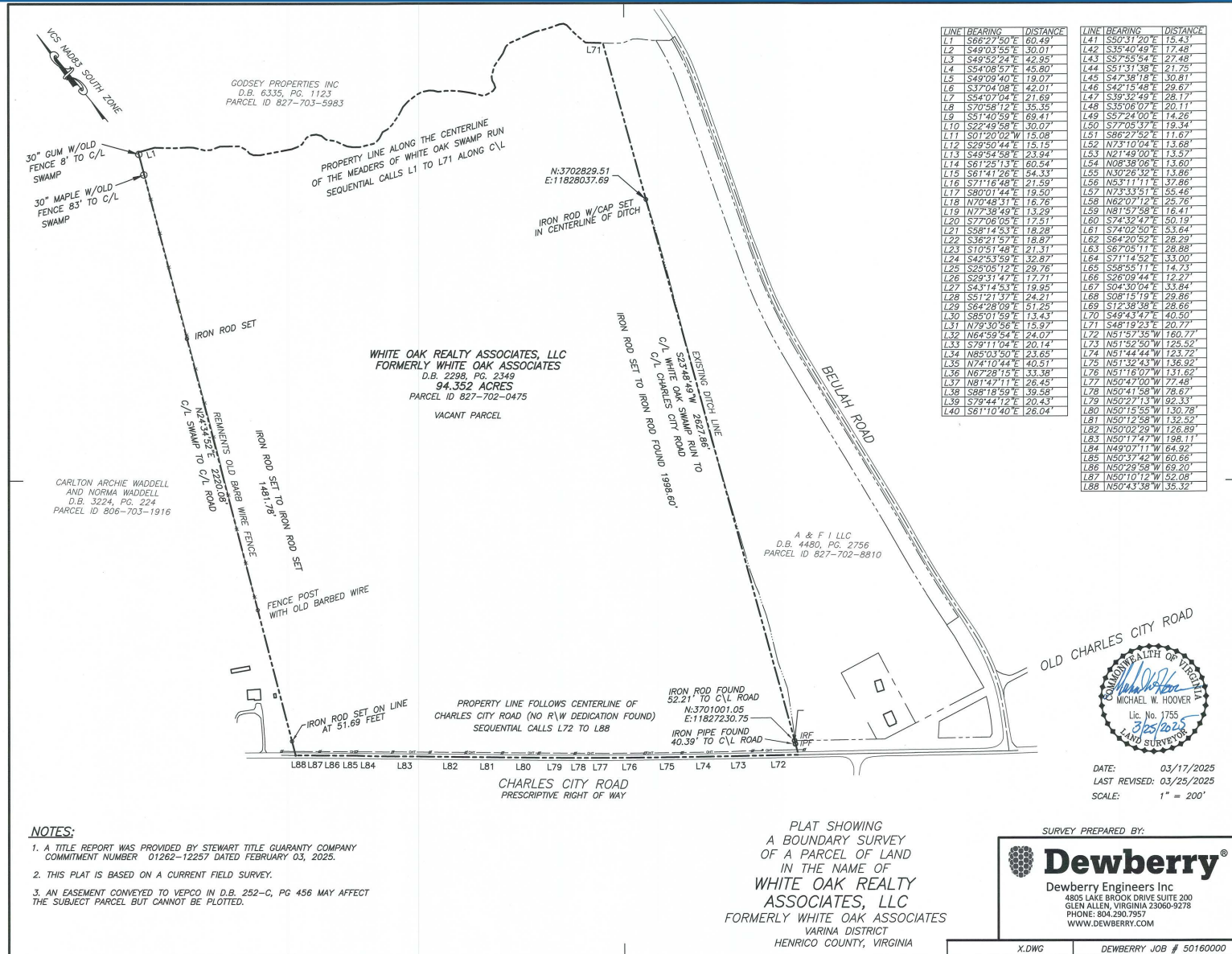
PORTER
R E A L T Y



This information has been prepared by Porter Realty Company, Inc. for marketing purposes only. No representation or warranty, expressed or implied, is made as to the accuracy of the foregoing information. Terms of sale or lease and availability are subject to change or withdrawal without notice.

SITE SURVEY

Henrico County
Charles City Rd



Robert Porter III
(804) 521-1455
rep3@porterinc.com



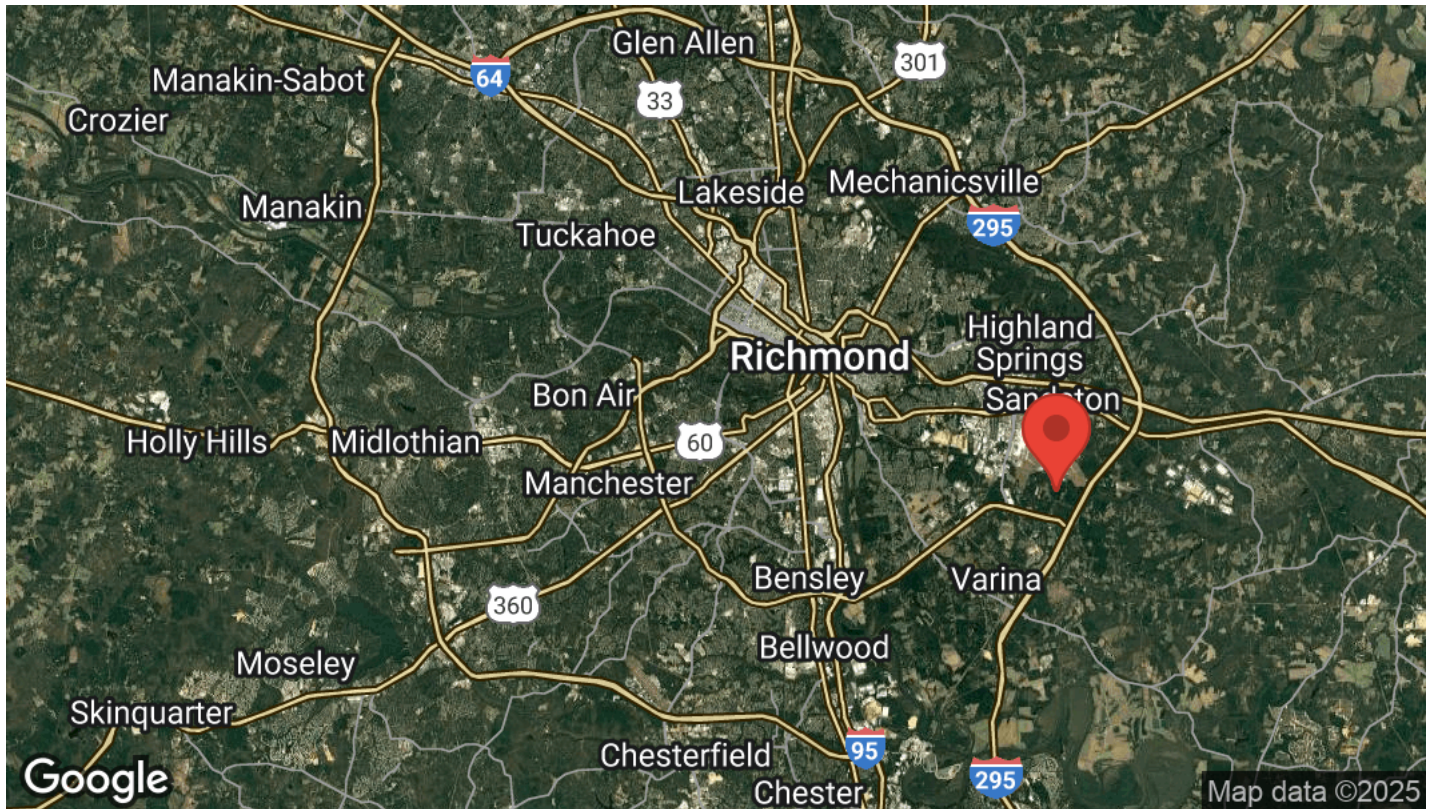
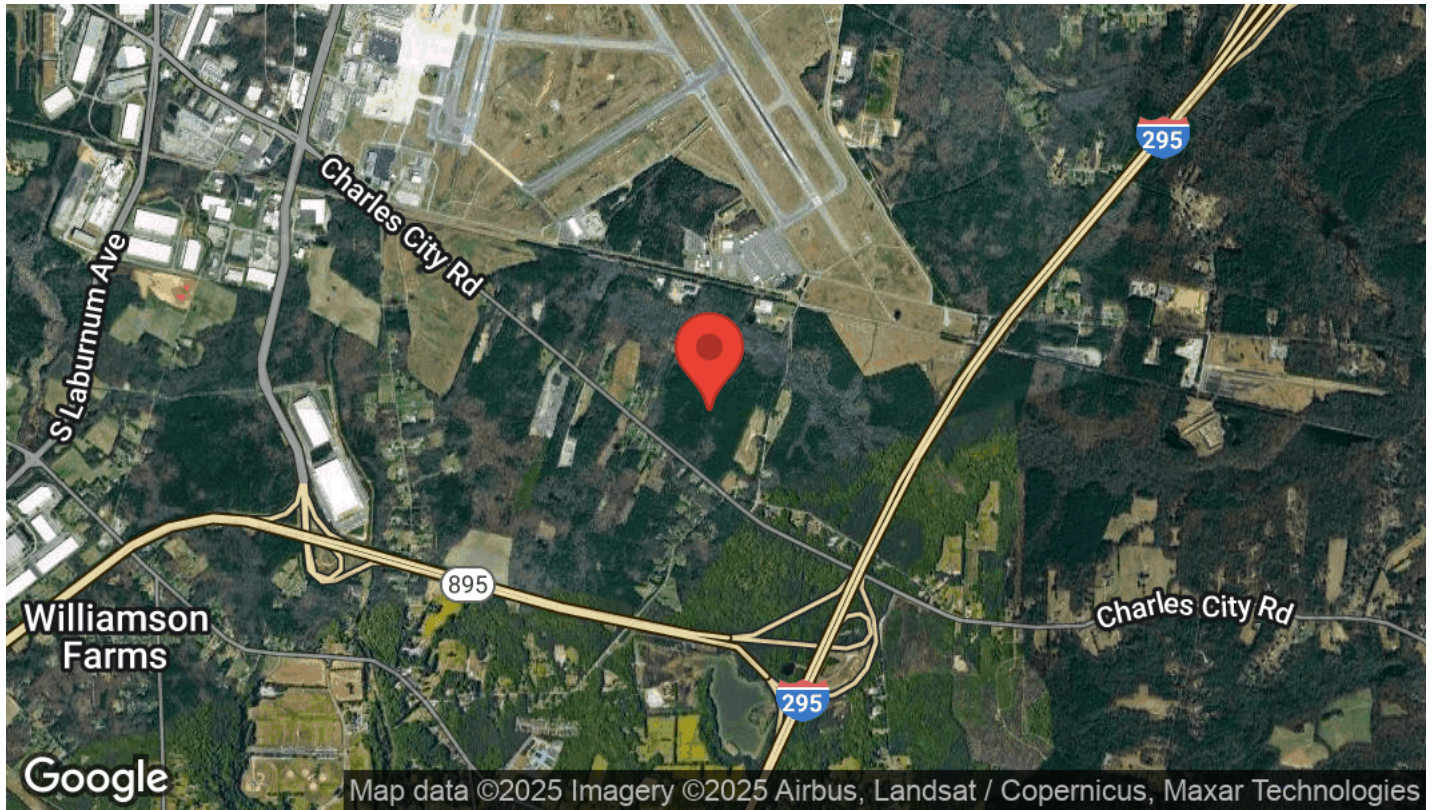
Porter Realty Company, Inc. | 4801 Radford Avenue | P.O. Box 6482 | Richmond, VA 23230 | www.porterinc.com

This information has been prepared by Porter Realty Company, Inc. for marketing purposes only. No representation or warranty, expressed or implied, is made as to the accuracy of the foregoing information. Terms of sale or lease and availability are subject to change or withdrawal without notice.

LOCATION MAPS

Henrico County

Charles City Rd



Robert Porter III
(804) 521-1455
rep3@porterinc.com



Porter Realty Company, Inc. | 4801 Radford Avenue | P.O. Box 6482 | Richmond, VA 23230 | www.porterinc.com

This information has been prepared by Porter Realty Company, Inc. for marketing purposes only. No representation or warranty, expressed or implied, is made as to the accuracy of the foregoing information. Terms of sale or lease and availability are subject to change or withdrawal without notice.