

FOR LEASE: OFFICE / WAREHOUSE



800 10TH ST EAST, HASTINGS, MN 55033



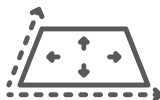
\$6.50/sqft + \$3.50 CAM & TAX



98,580 SQFT



Industrial/Office



7.96 ACRES



Tim Little

CHIEF
COMMERCIAL BROKER

TCTimLittle@gmail.com
952-432-4900



Susan Mall

COMMERCIAL
DIRECTOR

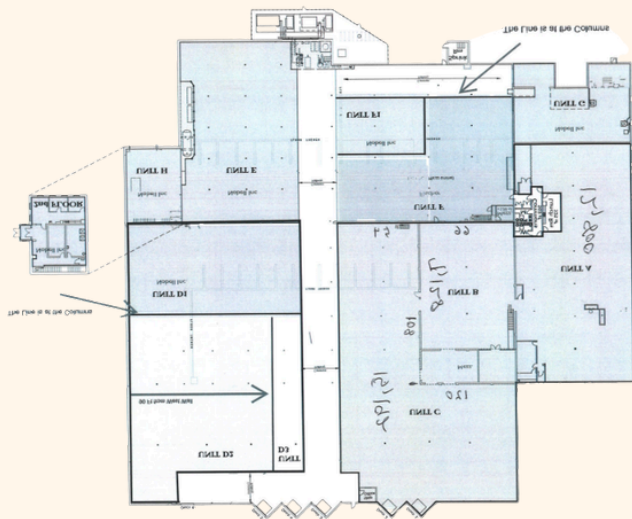
SusanMeMNRRealEstateTeam.com
651-402-5393

VIEW THIS PROPERTY AND MORE AT:
WWW.CROSSTOWNCOMMERCIAL.COM

VIEWING BY APPOINTMENT ONLY



MODERN, FULL-FEATURED INDUSTRIAL SPACE IN DESIRABLE, HIGH-TRAFFIC LOCATION



This modern industrial space is fully equipped, covering 98,580 sqft with ceiling heights of 11 to 20 feet. It features a robust power system, configurable loading bays, indoor and outdoor storage, and employee parking on 7.96 acres. Located in a high-traffic area on the edge of Hastings, it is surrounded by potential tenants and is close to a trending neighborhood with amenities, making it an ideal manufacturing hub.

***Common area space will be pro-rated per unit size and added on top of the base rent.**



VIEW THIS PROPERTY AND MORE AT:
WWW.CROSTOWNCOMMERCIAL.COM

VIEWING BY APPOINTMENT ONLY

CROSSTOWN
COMMERCIAL

OF

REMAX
COMMERCIAL

As professional commercial real estate brokers, we have the knowledge, experience, network, and motivation to get deals done.

“Protecting
your interests
in all Real Estate
transactions.”



TIM LITTLE

CHIEF
COMMERCIAL
BROKER

952-432-4900
tcTimLittle@gmail.com



SUSAN MALL

COMMERCIAL
DIRECTOR

651-402-5393
SusanM@MNRealEstateTeam.com

Meet
The Team