

LEASE INFORMATION

COMMERCIAL PROPERTY

160 DWYER AVE
MADERA CALIF 93637



KA
KIRK ATAMIAN

KIRK ATAMIAN
559-246-0000
KIRK@KIRKATAMIANREALESTATE.COM
DRE:021273785

RE/MAX
COMMERCIAL

WWW.KIRKATAMIANREALESTATE.COM

IMPORTANT DISCLOSURES

REMAX Commercial Lease Brochure Disclaimer

This brochure has been prepared solely for informational purposes.

The information contained herein is believed to be accurate and reliable; however, no representation, warranty, or guarantee, expressed or implied, is made as to its accuracy, completeness, or correctness. All information is subject to change without notice.

Prospective tenants are strongly encouraged to perform their own independent investigations and consult with legal, financial, and real estate advisors prior to making any leasing decisions. REMAX Commercial and its agents expressly disclaim any and all liability for representations, express or implied, contained in or omitted from this brochure.

This brochure and its contents are confidential and intended solely for the use of the recipient. Reproduction or distribution of any part of this document without the prior written consent of REMAX Commercial is strictly prohibited.

All lease offers, if made, will be extended only to qualified tenants and in compliance with all applicable laws and regulations.

By accepting this brochure, the recipient acknowledges and agrees to the terms and conditions outlined above.

.



TABLE OF CONTENTS

- 01 PROPERTY INFORMATION
- 02 FLOOR PLANS
- 03 PROPERTY PHOTOS
- 04 AERIALS & MAPS



01

PROPERTY INFORMATION

LEASE INFORMATION

PROPERTY SUMMARY



LEASE INFORMATION

Available now leasing: 3,840 SF at 160 Dwyer St in Madera. Features include an open floor plan, 2 private offices, ADA restroom, and ample parking. Prime location near shopping center. Ideal for daycare, education center, or community center.

PROPERTY ADDRESS	160 Dwyer Ave
SQUARE FEET	3,840 SF
LOT SIZE	0.38 AC
PARCEL NUMBER	009-190-010-000
ASKING PRICE	\$1.00 sq ft per month
TYPE OF LEASE	NNN
LEASE LENTH	3-5 years





PROPERTY SUMMARY

Introducing this spacious and recently renewed religious space located at 160 Dwyer St Madera CA. This property is perfect for businesses or organizations looking for a welcoming space to hold gatherings, events, or services. The property is conveniently located right around the corner from the popular 47th Place West Shopping Center and the beautiful Lions Park in Madera. Its location provides easy access to HWY 99 and excellent street parking. Previously known as West Side Ministries, this religious center boasts one large auditorium space with an extensive stage and three rooms. The property spans a total of 3,840 square feet.



HIGHLIGHTS

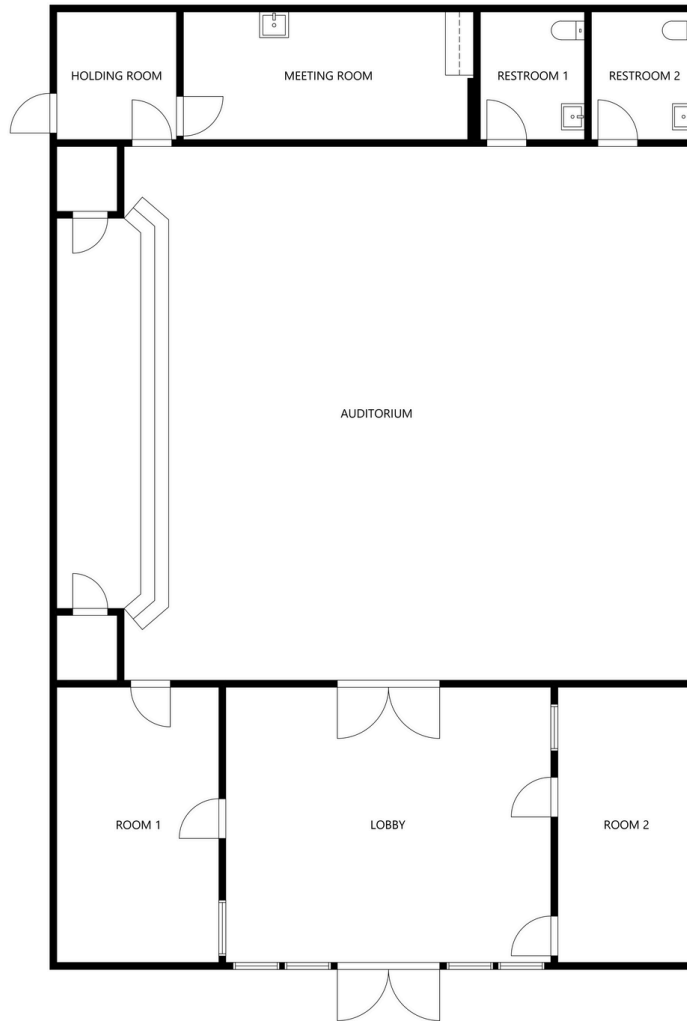
- ADA Compatible Restroom
- 3,840 SF
- Welcoming atmosphere
- Large parking spaces
- Good traffic flow
- Perfect for daycare, education/community center

02

FLOOR PLANS



FLOOR PLANS



FLOOR 1

03

PROPERTY PHOTOS

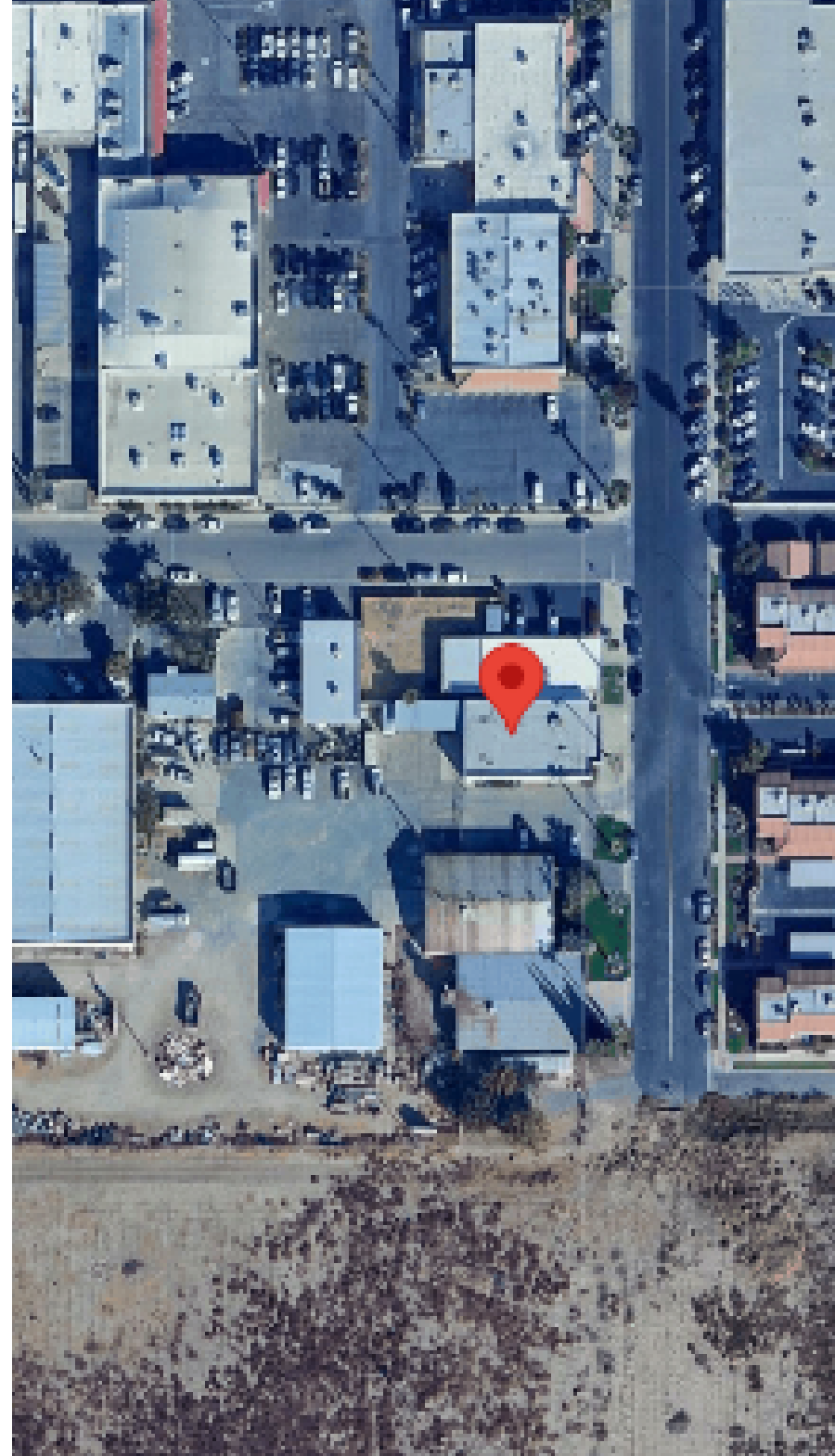






04

AERIALS & MAPS





Round Table Pizza



La Puerta Negra Mariacres y Cantina



Backstreet Bar & Grill

Compa Franks - Madera



CONTACT

Kirk Atamian
559-246-0000
kirk@kirkatamianrealestate.com
DRE:02127378

KA RE/MAX
KIRK ATAMIAN COMMERCIAL
REMAX SUCCESS | 501 North E #H, Madera, CA | 559-246-0000 |
www.kirkatamianrealestate.com.com