

AVAILABLE

3501-3505 Richmond Highway

3501 - 3505 Richmond Highway, Richmond, VA 23234



Exclusive Agent:

WILSON FLOHR, SIOR
(804) 521-1458
wilson@porterinc.com

CLIFF PORTER, CCIM, SIOR
(804) 521-1442
cliff@porterinc.com

4801 Radford Avenue | P.O. Box 6482
Richmond, VA 23230
www.porterinc.com
804-353-7994

PORTER
R E A L T Y

CORFAC
INTERNATIONAL

SIOR

CCIM

HIGHLIGHTS

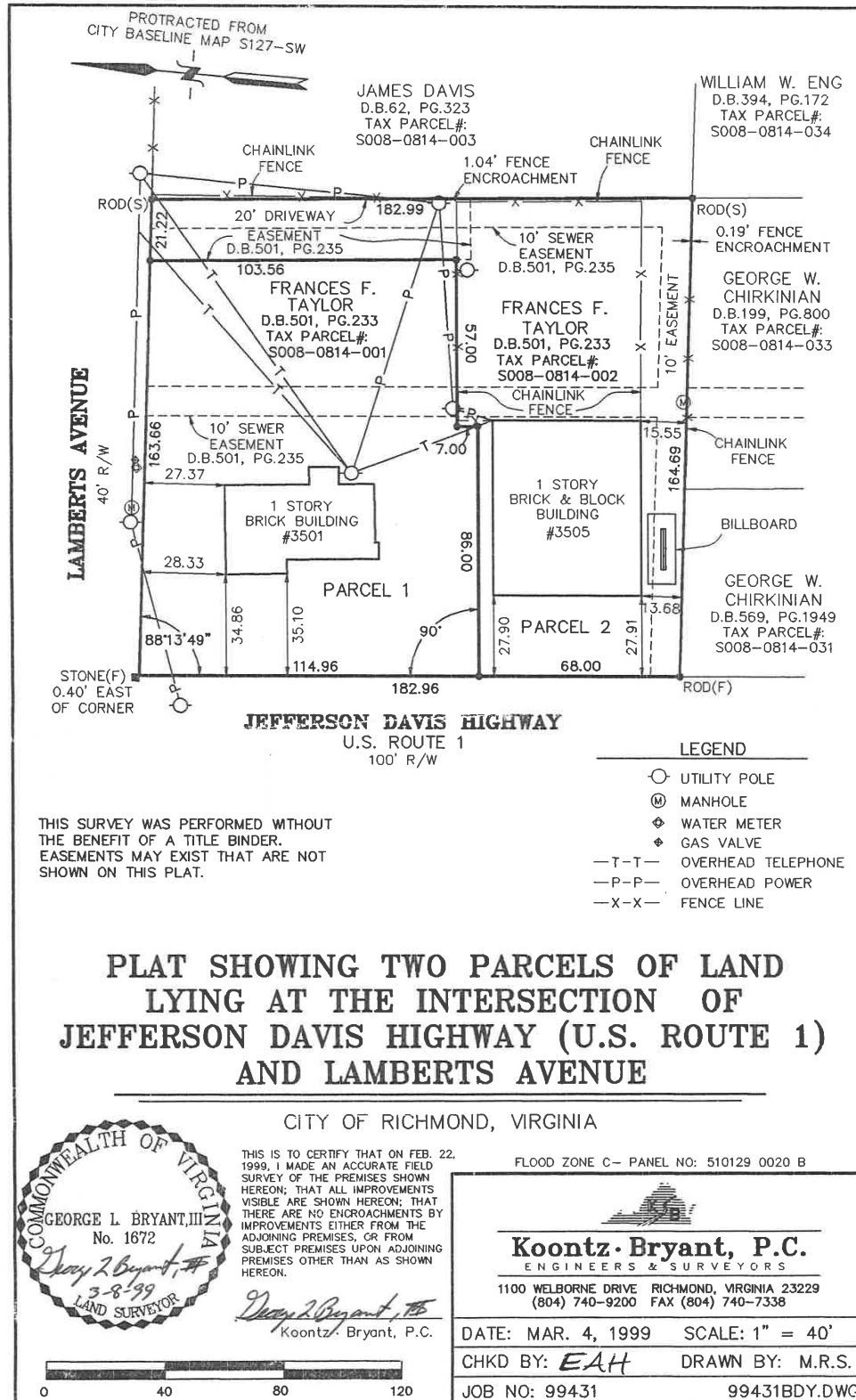
- Freestanding Flex and Retail Buildings
- 3501 Richmond Highway: 1,710 SF
- 3505 Richmond Highway: 2,850 SF
- Drive Through Building with Storage Yard
- Oversized Door Approx. 10 x 12
- 0.75 Acres Total - Partially Fenced
- Zoned B-3
- Billboard Income
- ~2.3 Miles to Chippenham Parkway
- ~1.2 Miles to I-95
- For Sale: \$739,000

This information has been prepared by Porter Realty Company, Inc. for marketing purposes only. No representation or warranty, expressed or implied, is made as to the accuracy of the foregoing information. Terms of sale or lease and availability are subject to change or withdrawal without notice.

ATTACHMENT 1

3501 - 3505 Richmond Highway | Richmond, VA 23234

3501-3505 Richmond Highway



Wilson Flohr, SIOR
(804) 521-1458
wilson@porterinc.com

Cliff Porter, CCIM, SIOR
(804) 521-1442
cliff@porterinc.com



Porter Realty Company, Inc. | 4801 Radford Avenue | P.O. Box 6482 | Richmond, VA 23230 | www.porterinc.com

This information has been prepared by Porter Realty Company, Inc. for marketing purposes only. No representation or warranty, expressed or implied, is made as to the accuracy of the foregoing information. Terms of sale or lease and availability are subject to change or withdrawal without notice.

PROPERTY PHOTOS

3501 - 3505 Richmond Highway | Richmond, VA 23234

3501-3505 Richmond Highway



Wilson Flohr, SIOR
(804) 521-1458
wilson@porterinc.com

Cliff Porter, CCIM, SIOR
(804) 521-1442
cliff@porterinc.com



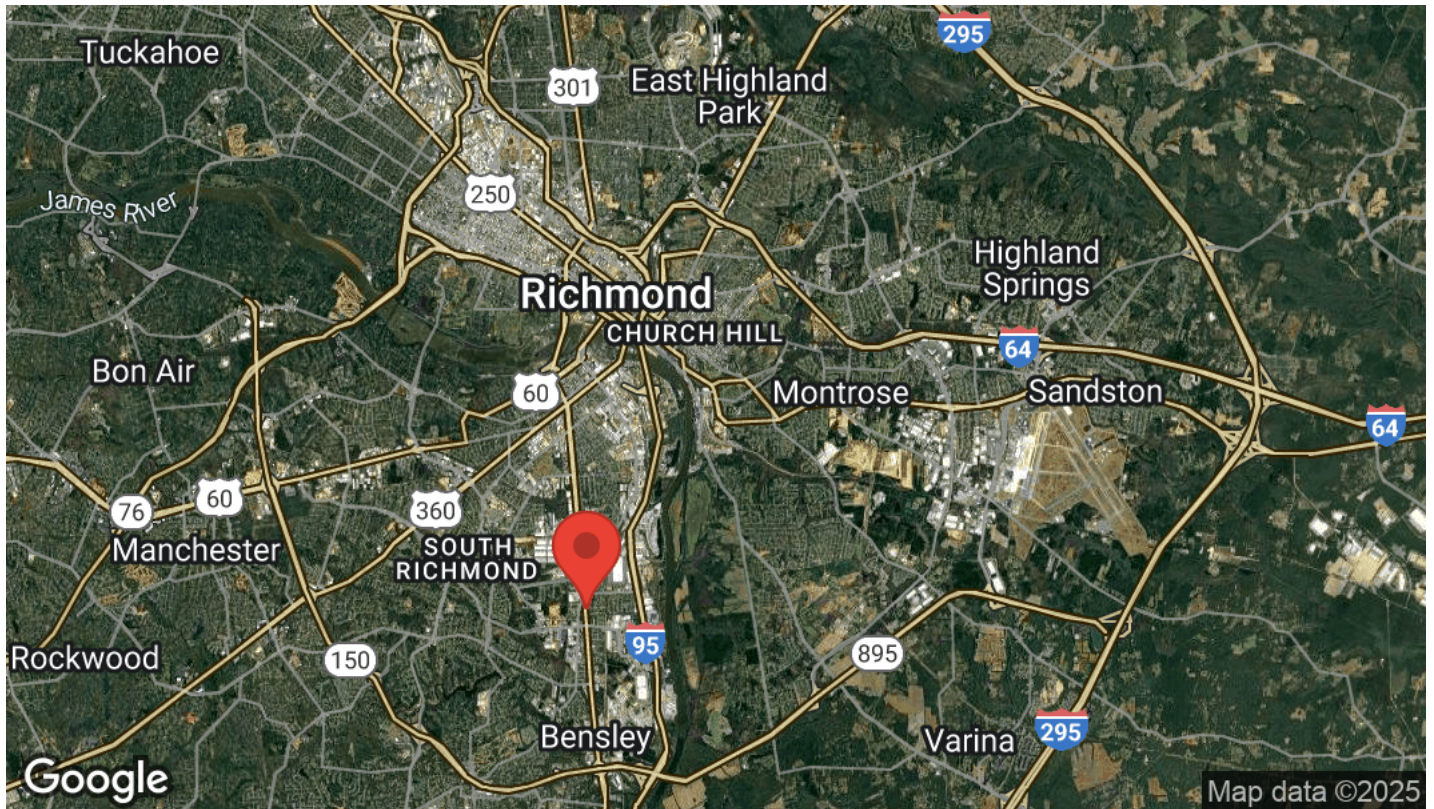
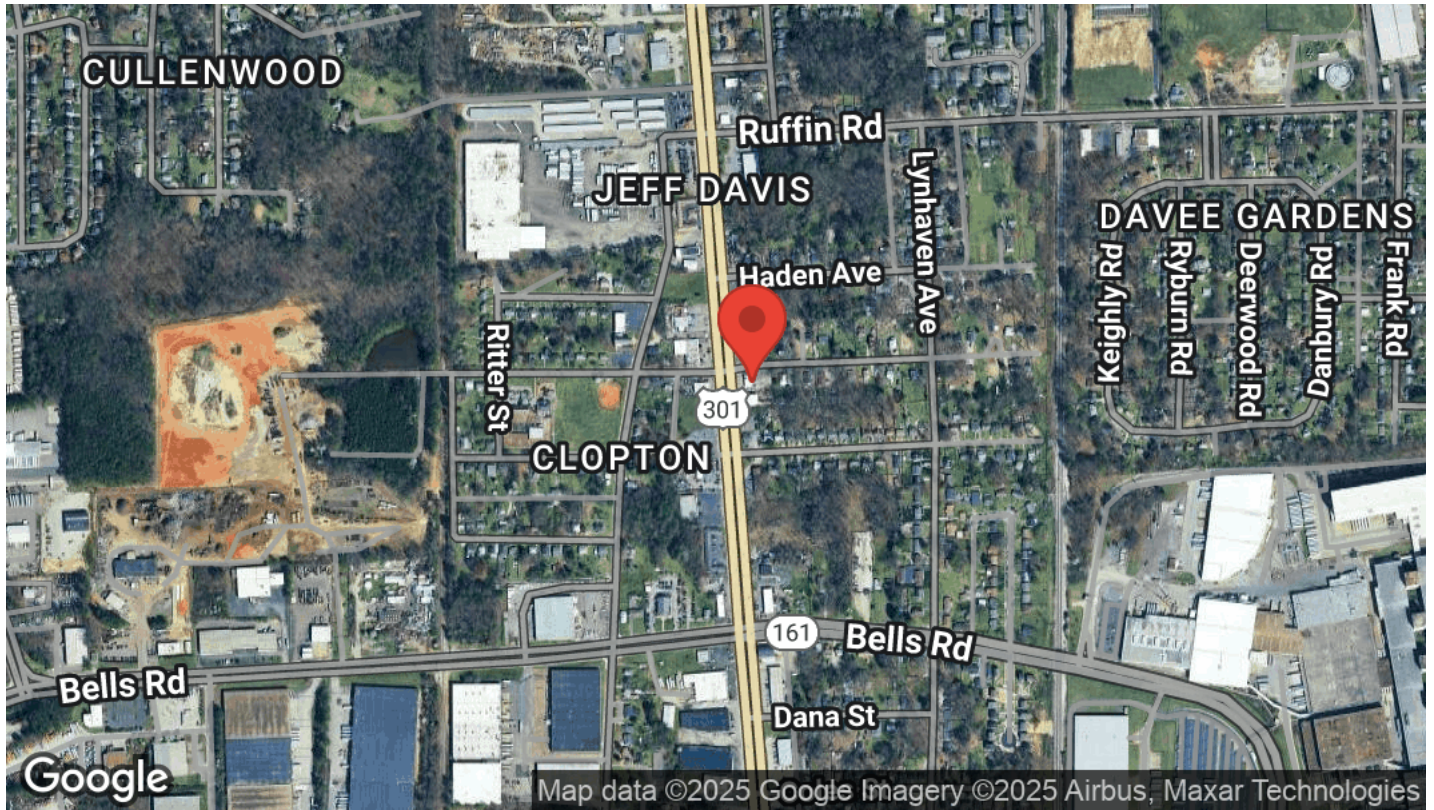
Porter Realty Company, Inc. | 4801 Radford Avenue | P.O. Box 6482 | Richmond, VA 23230 | www.porterinc.com

This information has been prepared by Porter Realty Company, Inc. for marketing purposes only. No representation or warranty, expressed or implied, is made as to the accuracy of the foregoing information. Terms of sale or lease and availability are subject to change or withdrawal without notice.

LOCATION MAPS

3501 - 3505 Richmond Highway | Richmond, VA 23234

3501-3505 Richmond Highway



Wilson Flohr, SIOR
(804) 521-1458
wilson@porterinc.com

Cliff Porter, CCIM, SIOR
(804) 521-1442
cliff@porterinc.com



Porter Realty Company, Inc. | 4801 Radford Avenue | P.O. Box 6482 | Richmond, VA 23230 | www.porterinc.com

This information has been prepared by Porter Realty Company, Inc. for marketing purposes only. No representation or warranty, expressed or implied, is made as to the accuracy of the foregoing information. Terms of sale or lease and availability are subject to change or withdrawal without notice.