

95 VICTORIA ST

95 VICTORIA ST S, WOODSTOCK, ON N4S 3K2



PROPERTY DESCRIPTION

2.05 AC lot with approvals for approximately 80,000 sf over 2 five story mixed-use buildings, plus an existing building for a Restaurant/ Lounge with approx 10,600 sqft over 2 floors and basement (and approx. 3,100 sqft of patio.)

PROPERTY HIGHLIGHTS

- Corner Lot
- Lots of Available Parking
- 2 SPA Approved Mixed use Building sites
- 1 Commercial Building fully gutted, on the far West side of the Site. (Set to Leased)
- Close to Fanshawe College Woodstock campus
- 8 Minutes to the Toyota Manufacturing Plant

OFFERING SUMMARY

Sale Price:	N/A
Lot Size:	2.049 Acres

APPROVALS

- West building 6,479 sqft of Commercial on the Main Floor and 38,879 sqft of Residential Units over the floors 2-6
- East Building has 7,556 sqft of Commercial space on the Main Floor with 33,475 Sqft of Residential space over floors 2-6.
- ***For More information please contact the Listing Broker to fill out the NDA to receive the full package.***



HALLMARK REALTY LTD
Each office independently owned and operated

MARIYA LILLY
Commercial Broker
416.824.5078
mariya.lilly@remax.net

STEPHEN LILLY
Commercial Broker
416.802.4228
info@TorontoCommercialProperties.ca
ON - Ontario #4745527
685 Sheppard Ave E Ste 401,
Toronto, ON M2K 1B6

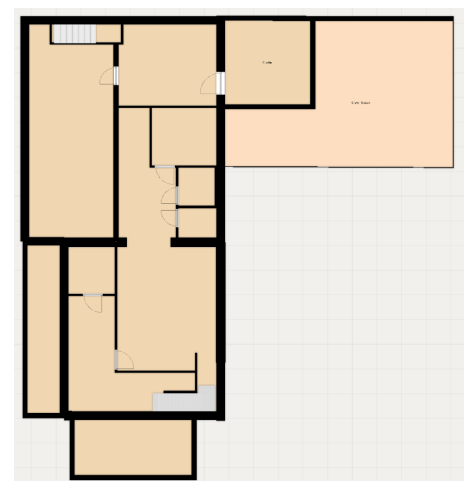
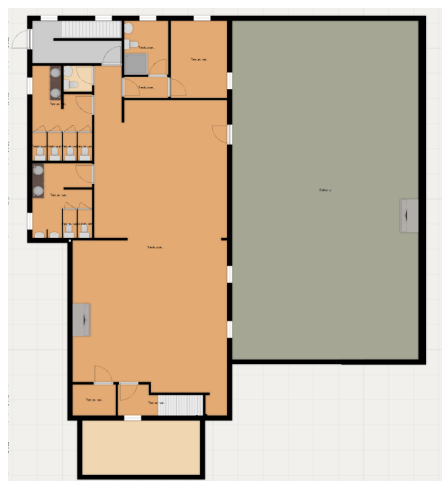
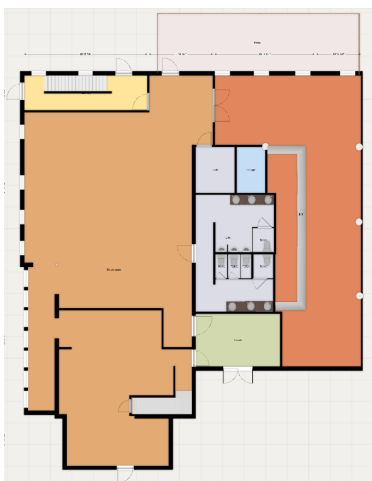
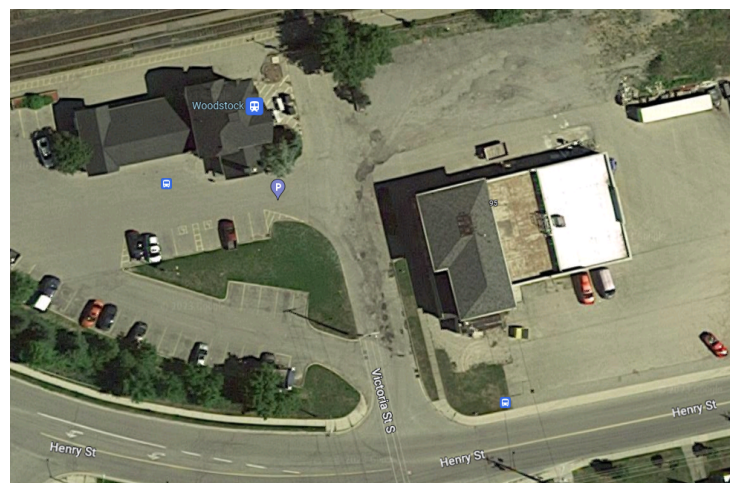
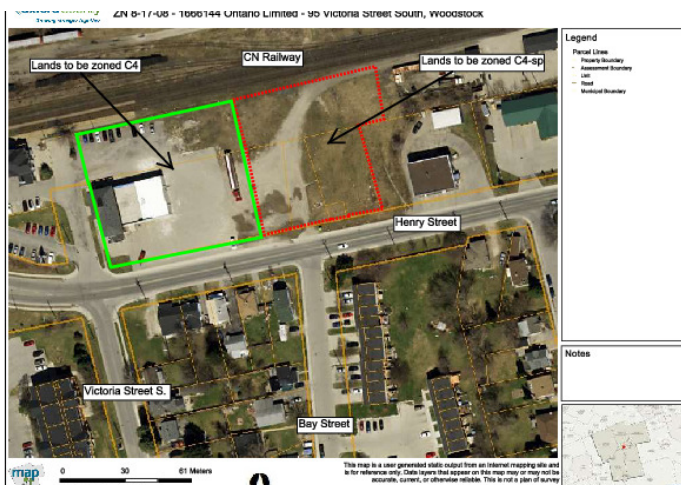
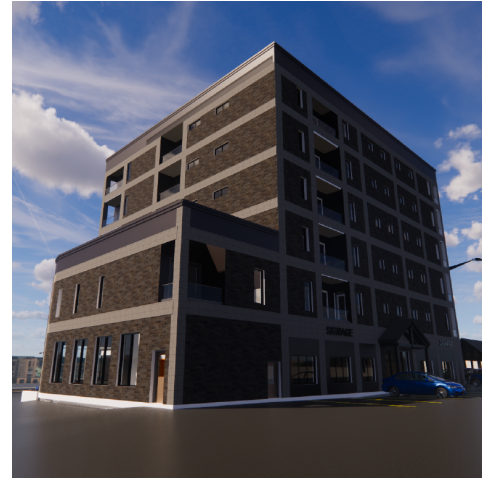
FOR SALE

MULTI FAMILY- MIXED USE

ADDITIONAL PHOTOS

95 VICTORIA ST

95 VICTORIA ST S, WOODSTOCK, ON N4S 3K2



RE/MAX
COMMERCIAL®

HALLMARK REALTY LTD
Each office independently owned and operated

MARIYA LILLY
Commercial Broker
416.824.5078
mariya.lilly@remax.net

STEPHEN LILLY
Commercial Broker
416.802.4228
info@TorontoCommercialProperties.ca
ON - Ontario #4745527
685 Sheppard Ave E Ste 401,
Toronto, ON M2K 1B6

All information contained herein is deemed reliable but not guaranteed. Each office independently owned and operated

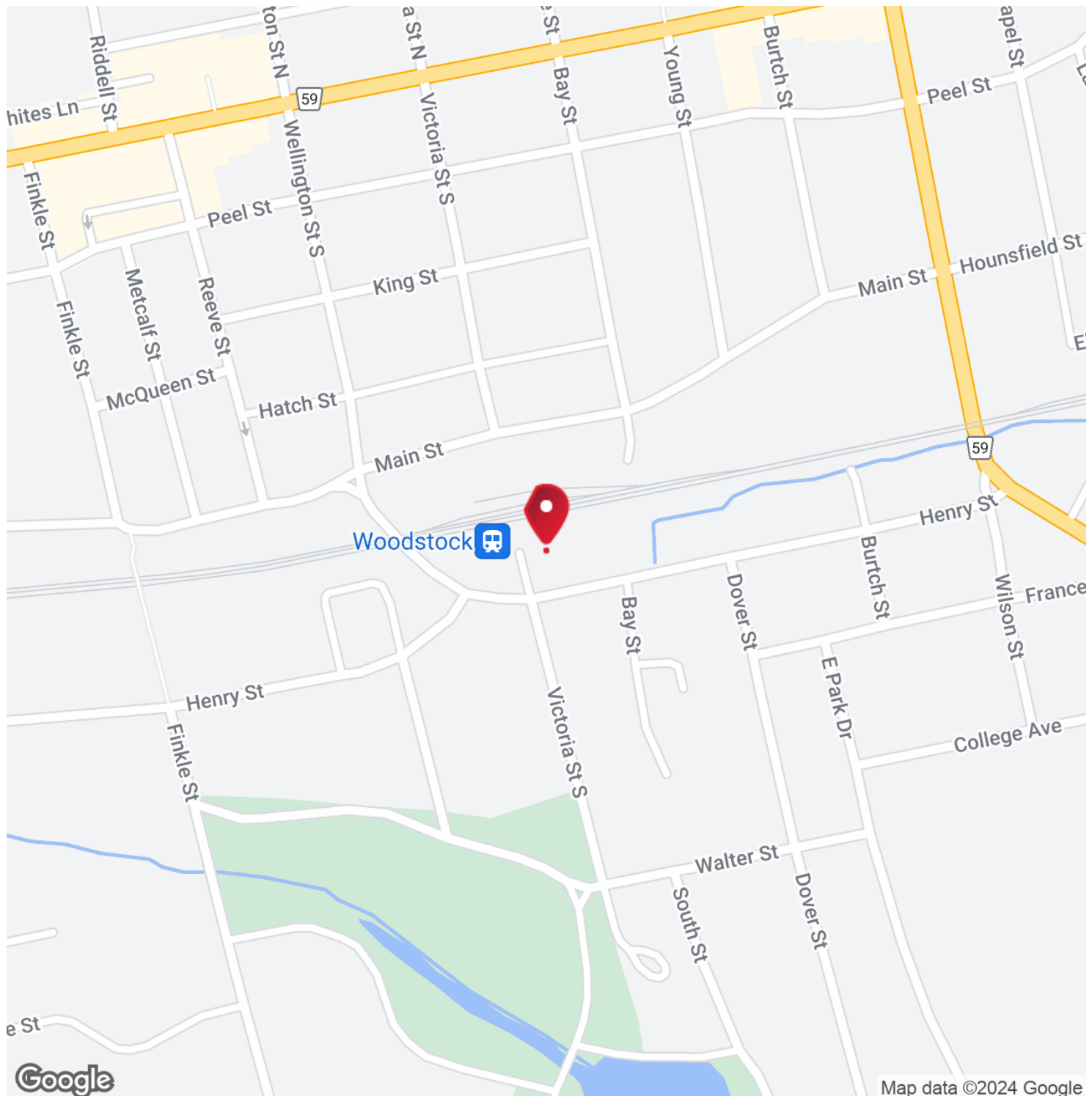
FOR SALE

MULTI FAMILY- MIXED USE

LOCATION MAP

95 VICTORIA ST

95 VICTORIA ST S, WOODSTOCK, ON N4S 3K2



Google

Map data ©2024 Google

RE/MAX
COMMERCIAL®

HALLMARK REALTY LTD
Each office independently owned and operated

MARIYA LILLY
Commercial Broker
416.824.5078
mariya.lilly@remax.net

STEPHEN LILLY
Commercial Broker
416.802.4228
info@TorontoCommercialProperties.ca
ON - Ontario #4745527
685 Sheppard Ave E Ste 401,
Toronto, ON M2K 1B6

All information contained herein is deemed reliable but not guaranteed. Each office independently owned and operated

FOR SALE

MULTI FAMILY- MIXED USE

MEET THE TEAM

95 VICTORIA ST

95 VICTORIA ST S, WOODSTOCK, ON N4S 3K2



STEPHEN LILLY

Commercial Broker

Direct: 416.802.4228

info@TorontoCommercialProperties.ca

RE/MAX HALLMARK REALTY LTD

685 Sheppard Ave E Ste 401, , Toronto, ON M2K 1B6
416.802.4228



MARIYA LILLY

Commercial Broker

Direct: 416.824.5078

mariya.lilly@remax.net

RE/MAX HALLMARK REALTY LTD

685 Sheppard Ave E Ste 401, , Toronto, ON M2K 1B6
416.824.5078



HALLMARK REALTY LTD

Each office independently owned and operated

MARIYA LILLY

Commercial Broker

416.824.5078

mariya.lilly@remax.net

STEPHEN LILLY

Commercial Broker

416.802.4228

info@TorontoCommercialProperties.ca

ON - Ontario #4745527

685 Sheppard Ave E Ste 401,
Toronto, ON M2K 1B6