



# New Listing

Vacant land for sale in Lester Prairie, MN



**TIM LITTLE**

CHIEF  
COMMERCIAL  
BROKER

952-432-4900  
tcTimLittle@gmail.com



**SUSAN MALL**

COMMERCIAL  
DIRECTOR

651-402-5393  
SusanM@MNRealEstateTeam.com



# Location

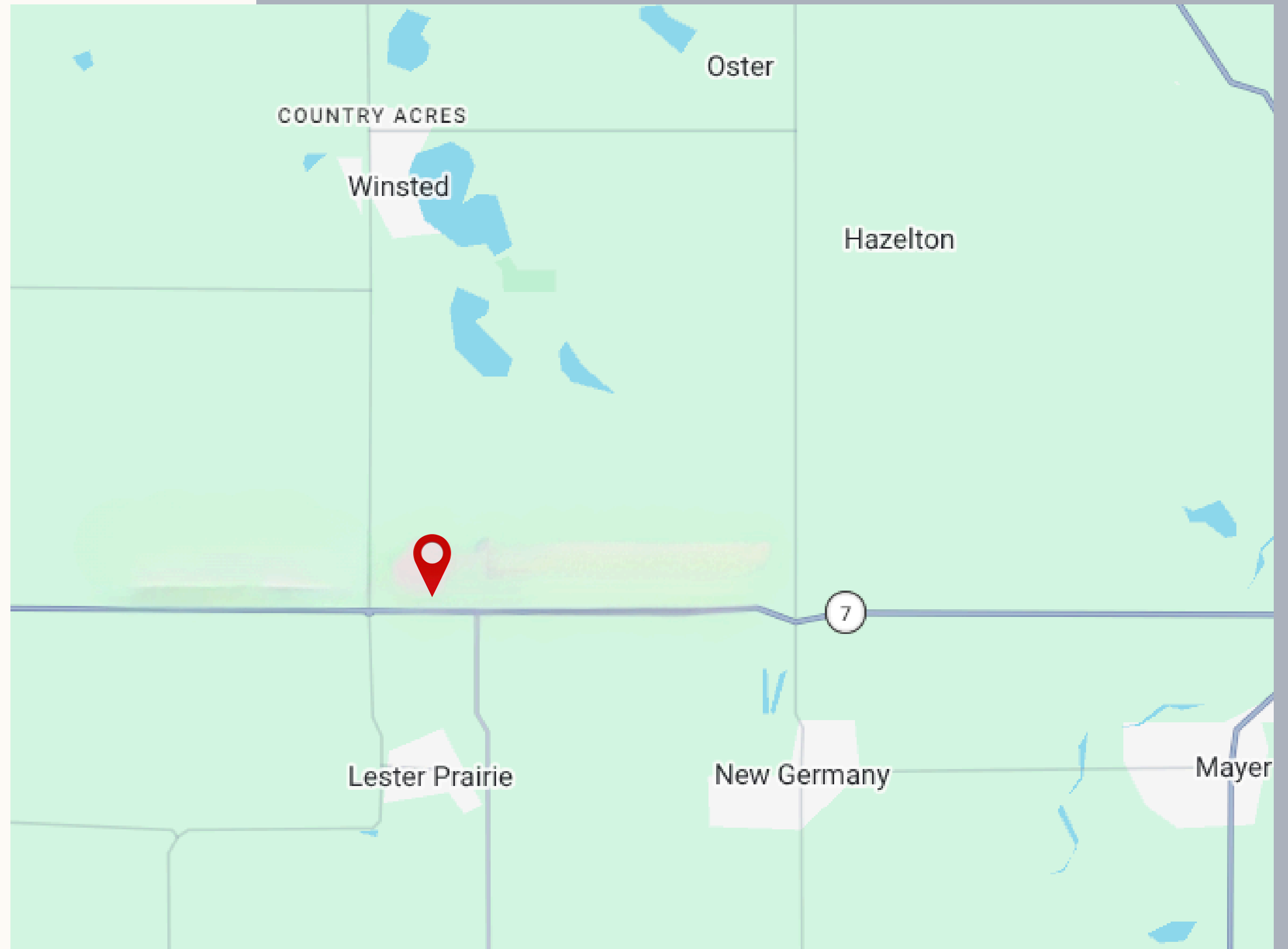
Frontage access from HWY 7 in  
Lester Prairie

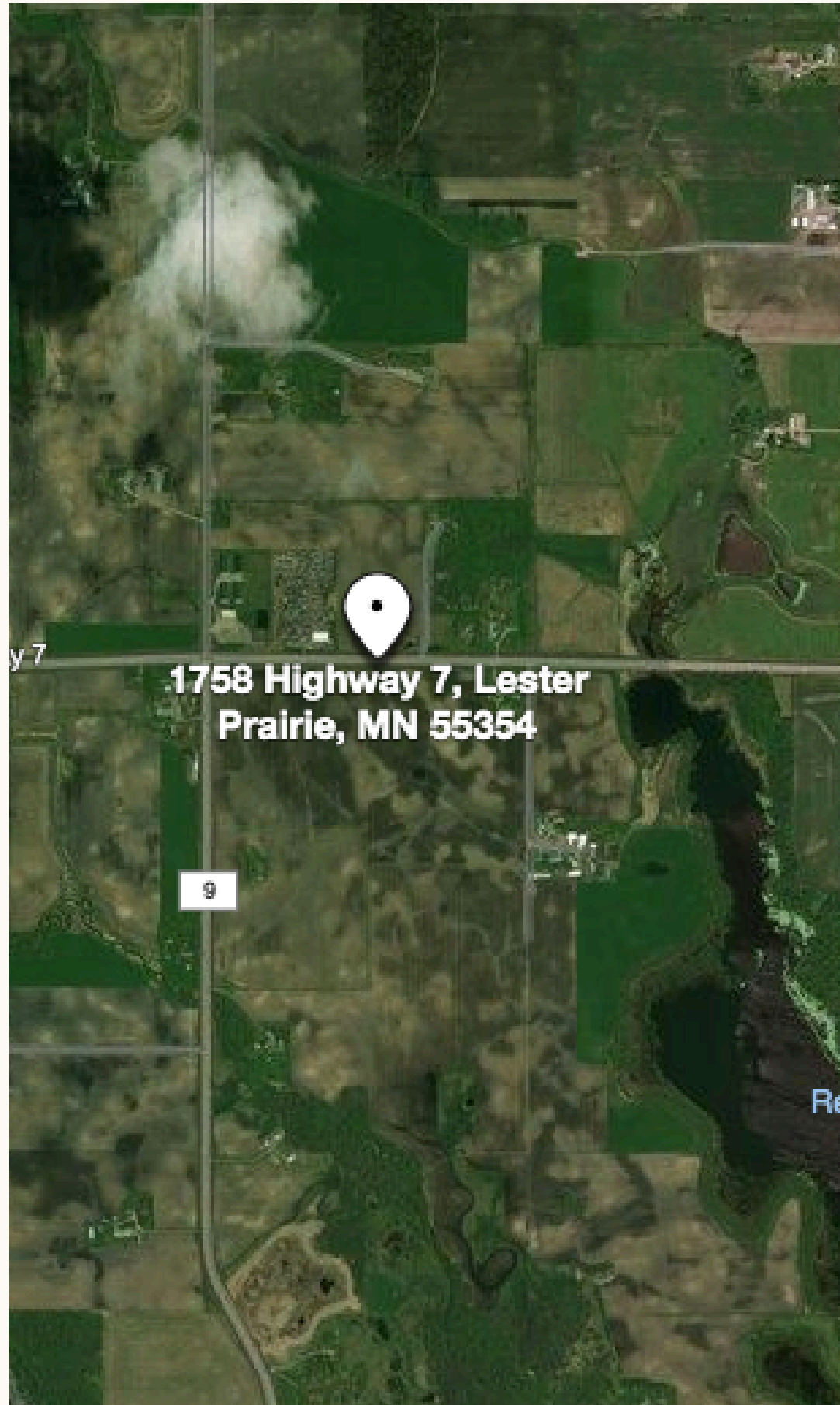
## Address

1758 Highway 7  
Lester Prairie, MN 55354

**Call Tim** 952-432-4900

**Call Suasn** 651-402-5393





## The Neighborhood

### Population

1,898

### Average Age

32

### Average income

\$96,544

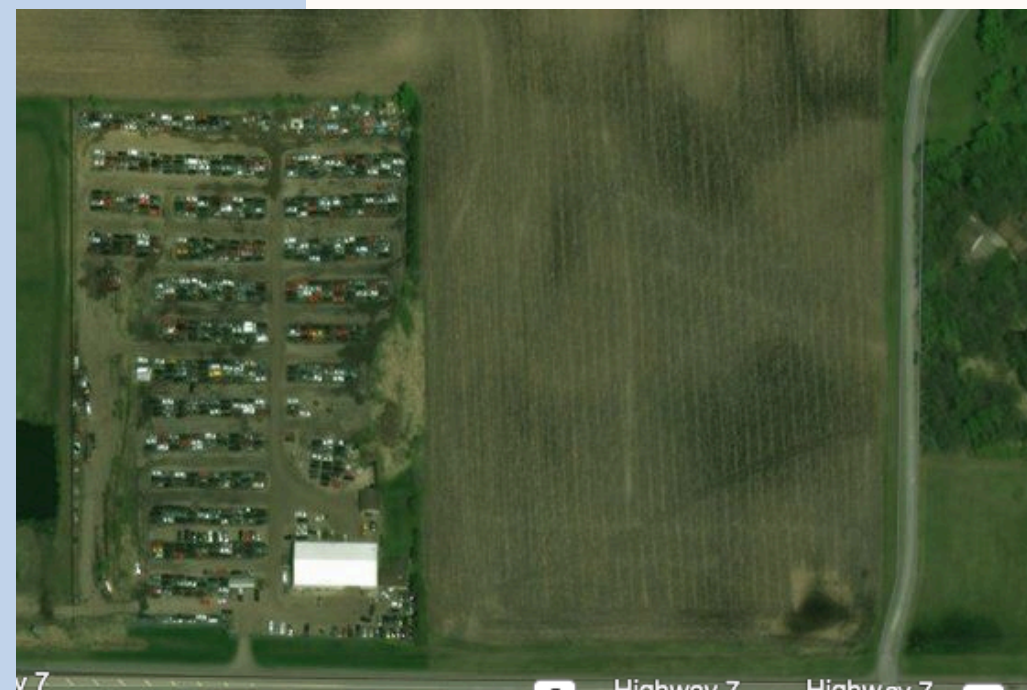
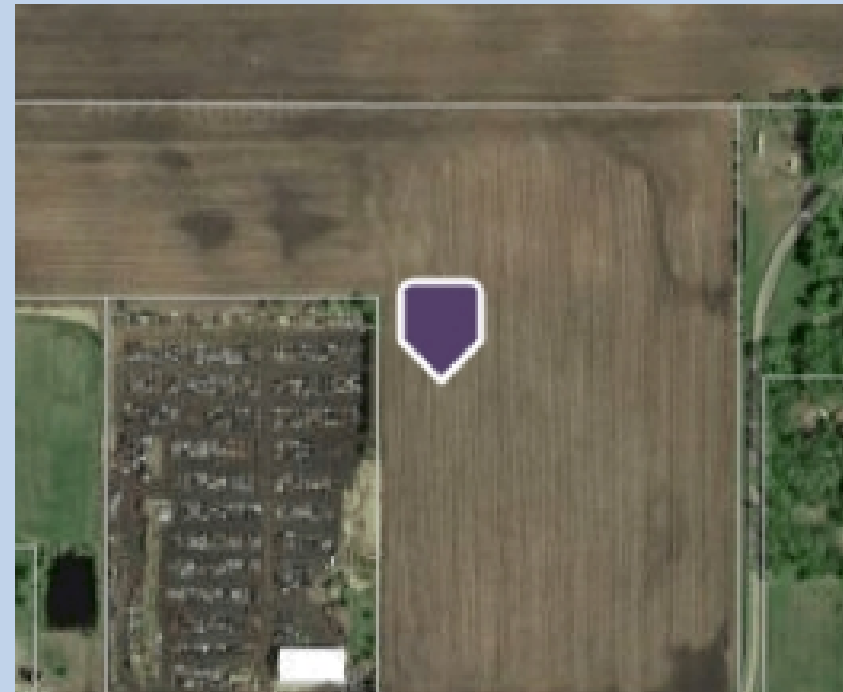
### Nearby Businesses

- Engelke Machine
- Balow's Highway 7 Auto Salvage



# Highlights

- Frontage access from HWY 7
- Light Industrial allowed
- Possible Mini Storage Site
- 26.6 acres
- Adjacent to Auto Salvage and future Solar Garden



# Make An Offer

As professional commercial real estate brokers, we have the knowledge, experience, network, and motivation to get deals done.



“Protecting your interests in all Real Estate transactions.”



Tim Little

CHIEF  
COMMERCIAL BROKER

---

TCTimLittle@gmail.com  
952-432-4900



Susan Mall

COMMERCIAL  
DIRECTOR

---

SusanM@MNRealEstateTeam.com  
651-402-5393