

AVAILABLE

8003 Franklin Farms Drive

8003 Franklin Farms Drive, Richmond, VA 23229



Exclusive Agent:

WILSON FLOHR, SIOR
(804) 521-1458
wilson@porterinc.com

ROBERT PORTER III
(804) 521-1455
rep3@porterinc.com

4801 Radford Avenue | P.O. Box 6482
Richmond, VA 23230
www.porterinc.com
804-353-7994

PORTER
R E A L T Y

CORFAC
INTERNATIONAL

SIOR

CCIM

HIGHLIGHTS

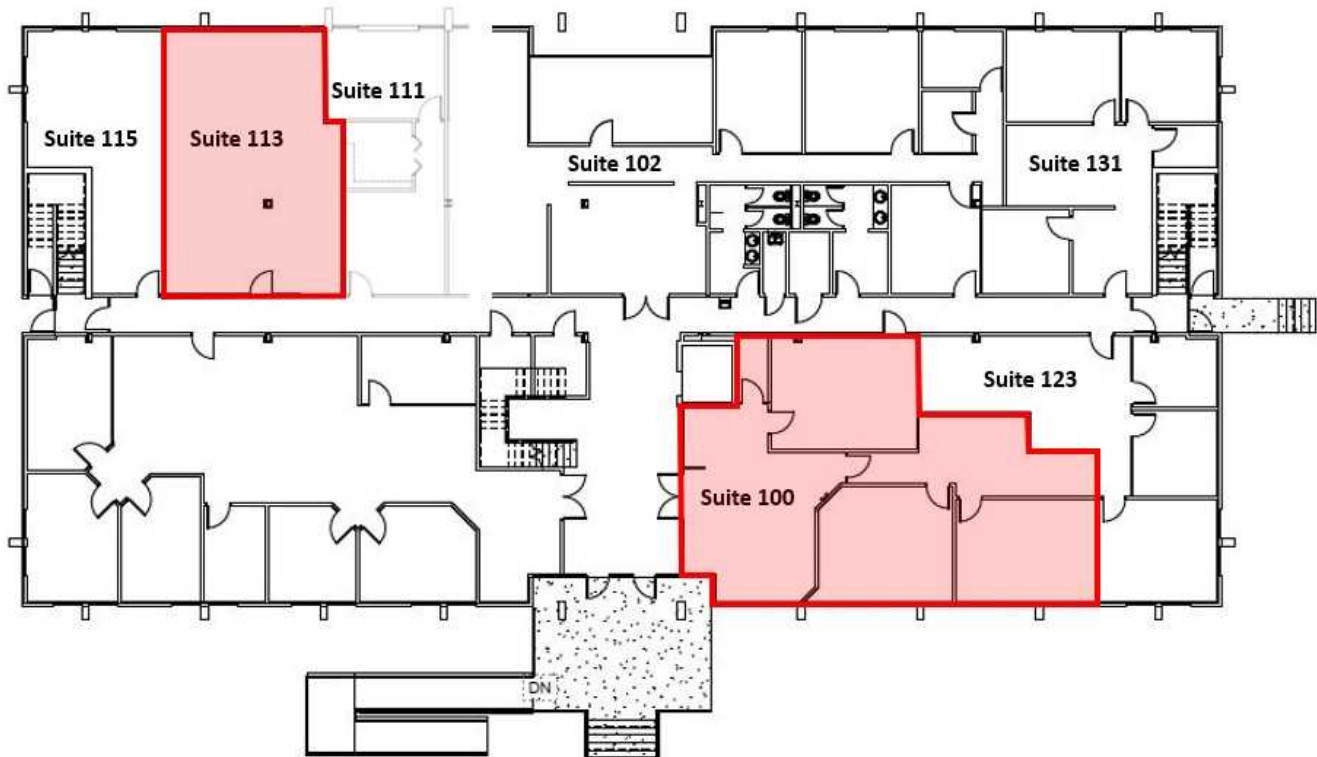
- Professional Office Park in Henrico County
- Suite 100: 1,639 SF Available 9/1/25
- Suite 113: 727 SF Available 9/1/25
- Newly Renovated Lobby and Restrooms with High-End Finishes
- Abundant Parking
- Located at Three Chopt Rd & Forest Ave
- Proximate to Retail/Restaurants & Henrico Doctors Hospital
- 1.5 Miles to I-64
- For Lease: \$24/SF Full Service

This information has been prepared by Porter Realty Company, Inc. for marketing purposes only. No representation or warranty, expressed or implied, is made as to the accuracy of the foregoing information. Terms of sale or lease and availability are subject to change or withdrawal without notice.

PROPERTY PHOTOS

8003 Franklin Farms Drive | Richmond, VA 23229

8003 Franklin Farms Drive



Wilson Flohr, SIOR
(804) 521-1458
wilson@porterinc.com

Robert Porter III
(804) 521-1455
rep3@porterinc.com



Porter Realty Company, Inc. | 4801 Radford Avenue | P.O. Box 6482 | Richmond, VA 23230 | www.porterinc.com

This information has been prepared by Porter Realty Company, Inc. for marketing purposes only. No representation or warranty, expressed or implied, is made as to the accuracy of the foregoing information. Terms of sale or lease and availability are subject to change or withdrawal without notice.

PROPERTY PHOTOS

8003 Franklin Farms Drive | Richmond, VA 23229

8003 Franklin Farms Drive



Wilson Flohr, SIOR
(804) 521-1458
wilson@porterinc.com

Robert Porter III
(804) 521-1455
rep3@porterinc.com



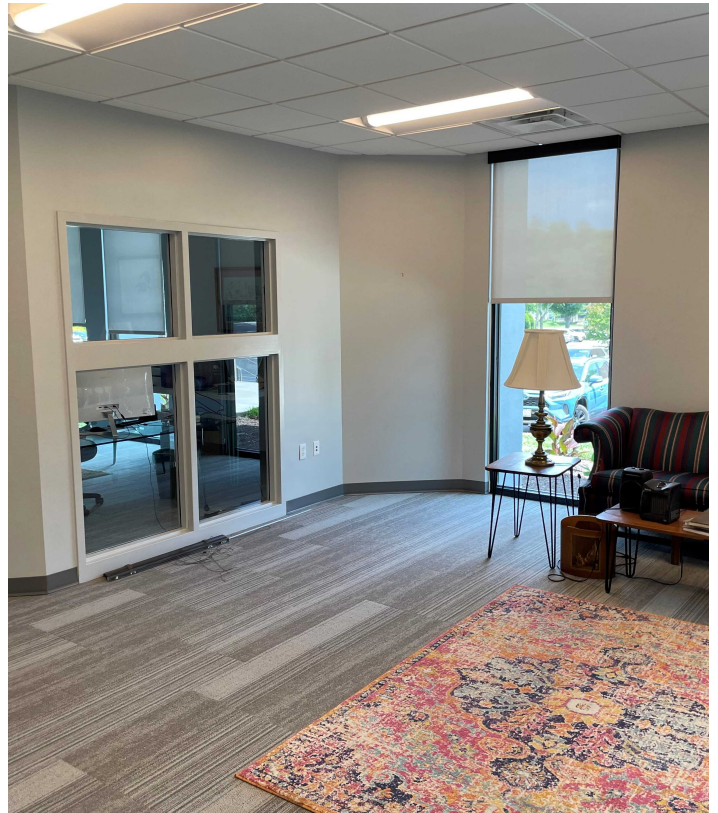
Porter Realty Company, Inc. | 4801 Radford Avenue | P.O. Box 6482 | Richmond, VA 23230 | www.porterinc.com

This information has been prepared by Porter Realty Company, Inc. for marketing purposes only. No representation or warranty, expressed or implied, is made as to the accuracy of the foregoing information. Terms of sale or lease and availability are subject to change or withdrawal without notice.

PROPERTY PHOTOS

8003 Franklin Farms Drive | Richmond, VA 23229

8003 Franklin Farms Drive



Wilson Flohr, SIOR
(804) 521-1458
wilson@porterinc.com

Robert Porter III
(804) 521-1455
rep3@porterinc.com



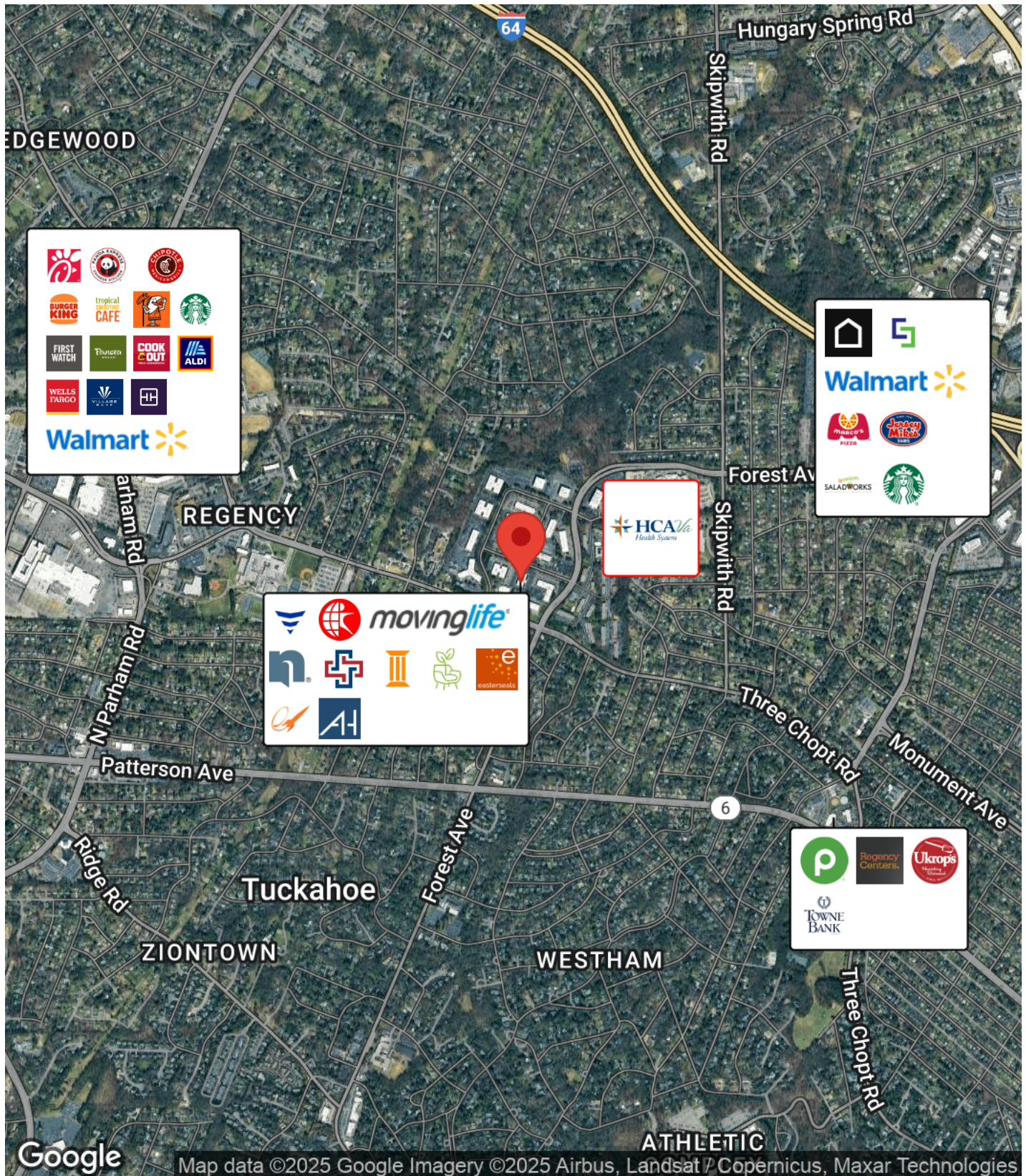
Porter Realty Company, Inc. | 4801 Radford Avenue | P.O. Box 6482 | Richmond, VA 23230 | www.porterinc.com

This information has been prepared by Porter Realty Company, Inc. for marketing purposes only. No representation or warranty, expressed or implied, is made as to the accuracy of the foregoing information. Terms of sale or lease and availability are subject to change or withdrawal without notice.

BUSINESS MAP

8003 Franklin Farms Drive | Richmond, VA 23229

8003 Franklin Farms Drive



Wilson Flohr, SIOR
(804) 521-1458
wilson@porterinc.com

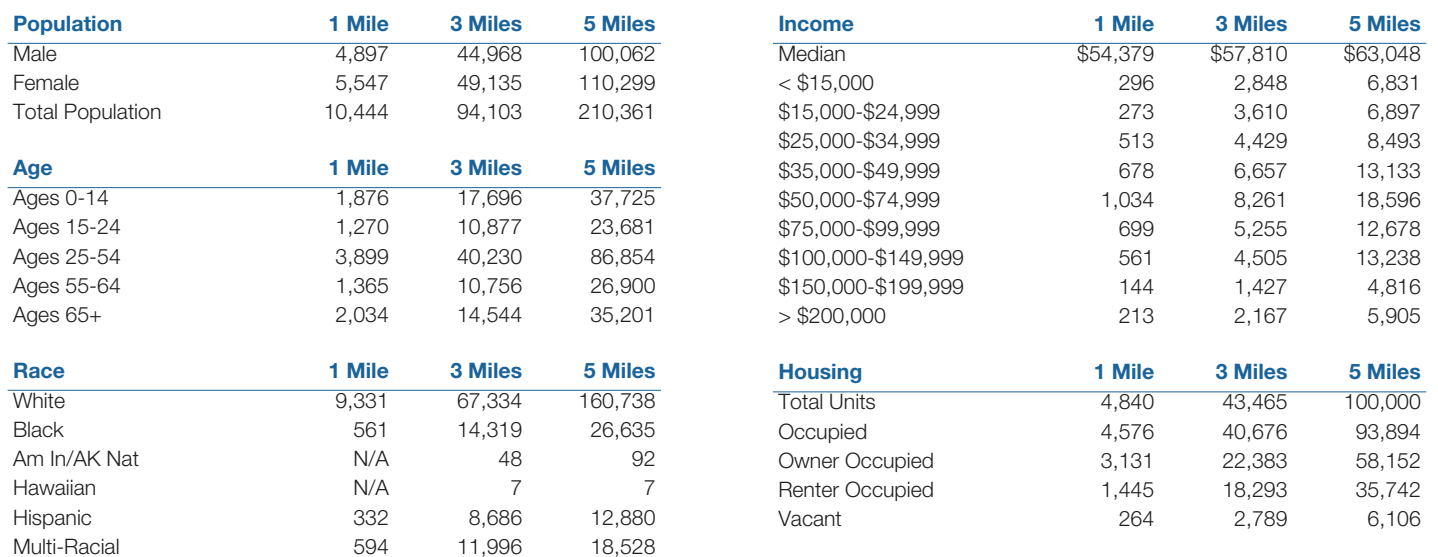
Robert Porter III
(804) 521-1455
rep3@porterinc.com



Porter Realty Company, Inc. | 4801 Radford Avenue | P.O. Box 6482 | Richmond, VA 23230 | www.porterinc.com

This information has been prepared by Porter Realty Company, Inc. for marketing purposes only. No representation or warranty, expressed or implied, is made as to the accuracy of the foregoing information. Terms of sale or lease and availability are subject to change or withdrawal without notice.

8003 Franklin Farms Drive



PORTER
REALTY

This information has been prepared by Porter Realty Company, Inc. for marketing purposes only. No representation or warranty, expressed or implied, is made as to the accuracy of the foregoing information.
Terms of sale or lease and availability are subject to change or withdrawal without notice.