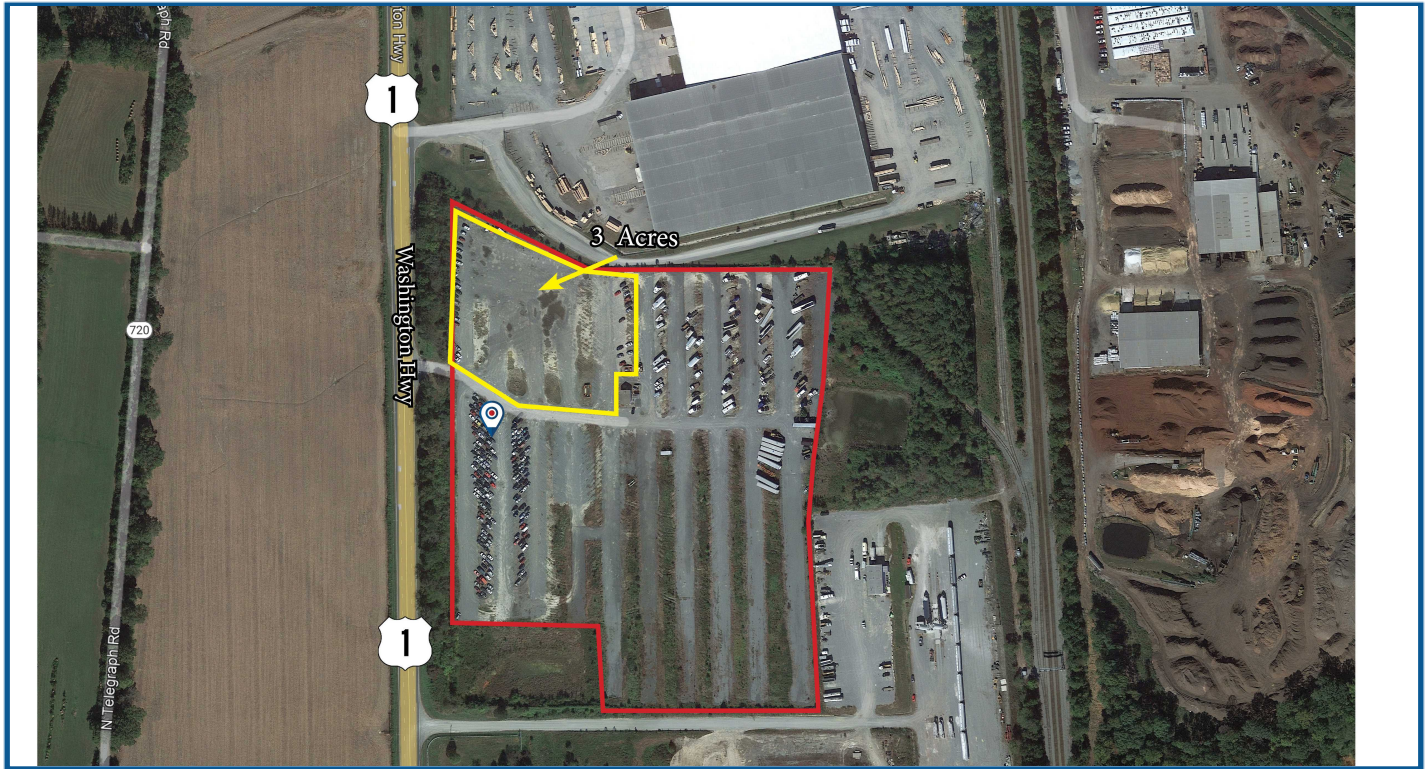


AVAILABLE

17226 Washington Highway Doswell, VA 23047



Exclusive Agent:

KEVIN COX, SIOR
(804) 521-1468
Kevin@porterinc.com

HIGHLIGHTS

- Graveled/Fenced Yard Area
- 3 Acres +/- Available
- Zoned M-3 Heavy Industrial
- Perfect for Open Storage
- Road Frontage on Washington Hwy/US Rte. 1
- Potential Rail Access at Rear
- ~3 Miles to I-95/Doswell Exit 98
- FOR LEASE: \$2,500/Acre/Month NNN

4801 Radford Avenue | P.O. Box 6482
Richmond, VA 23230
www.porterinc.com
804-353-7994

PORTER
R E A L T Y

CORFAC
INTERNATIONAL

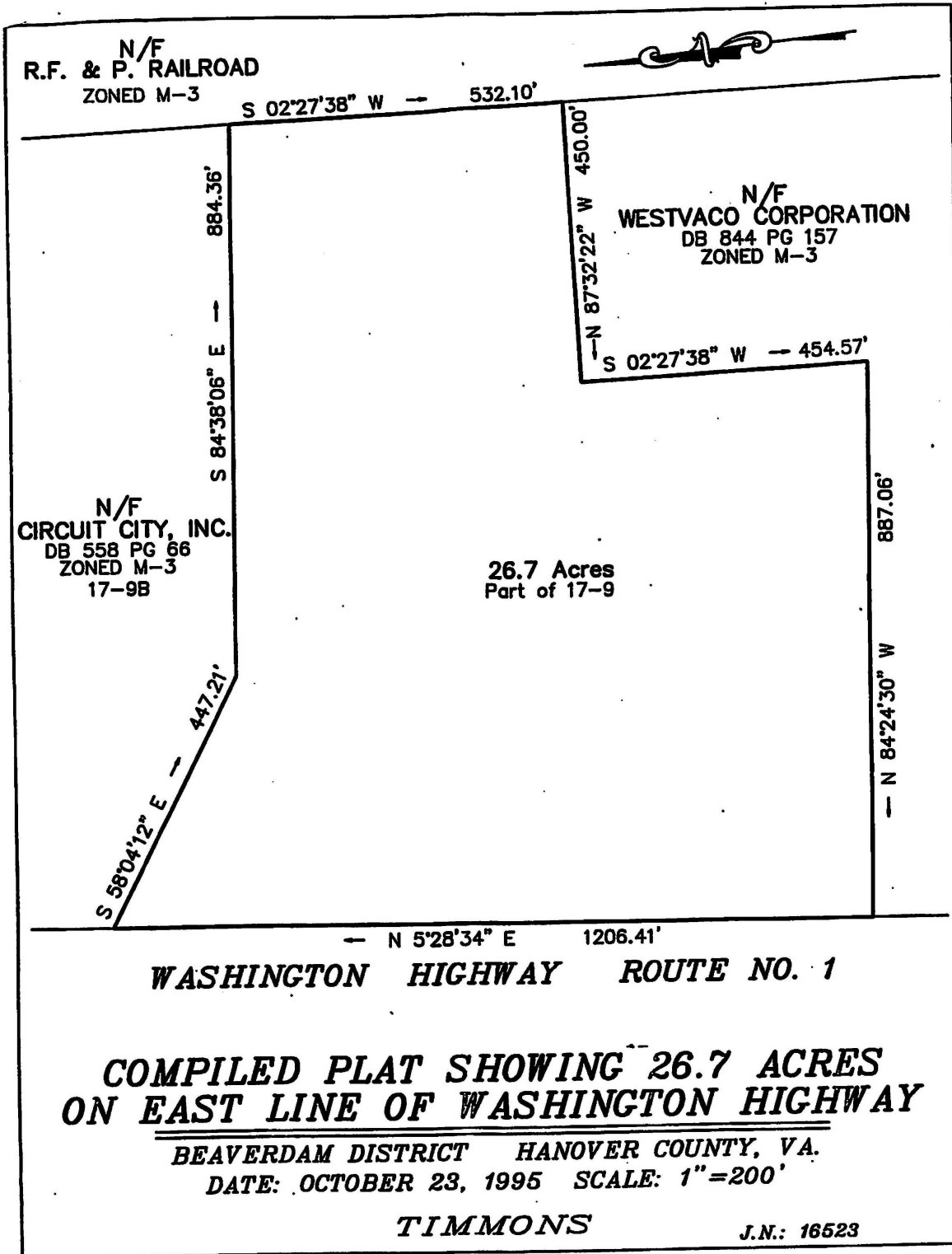
SIOR

CCIM

This information has been prepared by Porter Realty Company, Inc. for marketing purposes only. No representation or warranty, expressed or implied, is made as to the accuracy of the foregoing information. Terms of sale or lease and availability are subject to change or withdrawal without notice.

PROPERTY PHOTOS

17226 Washington Highway | Doswell, VA 23047



Kevin Cox, SIOR
(804) 521-1468
Kevin@porterinc.com

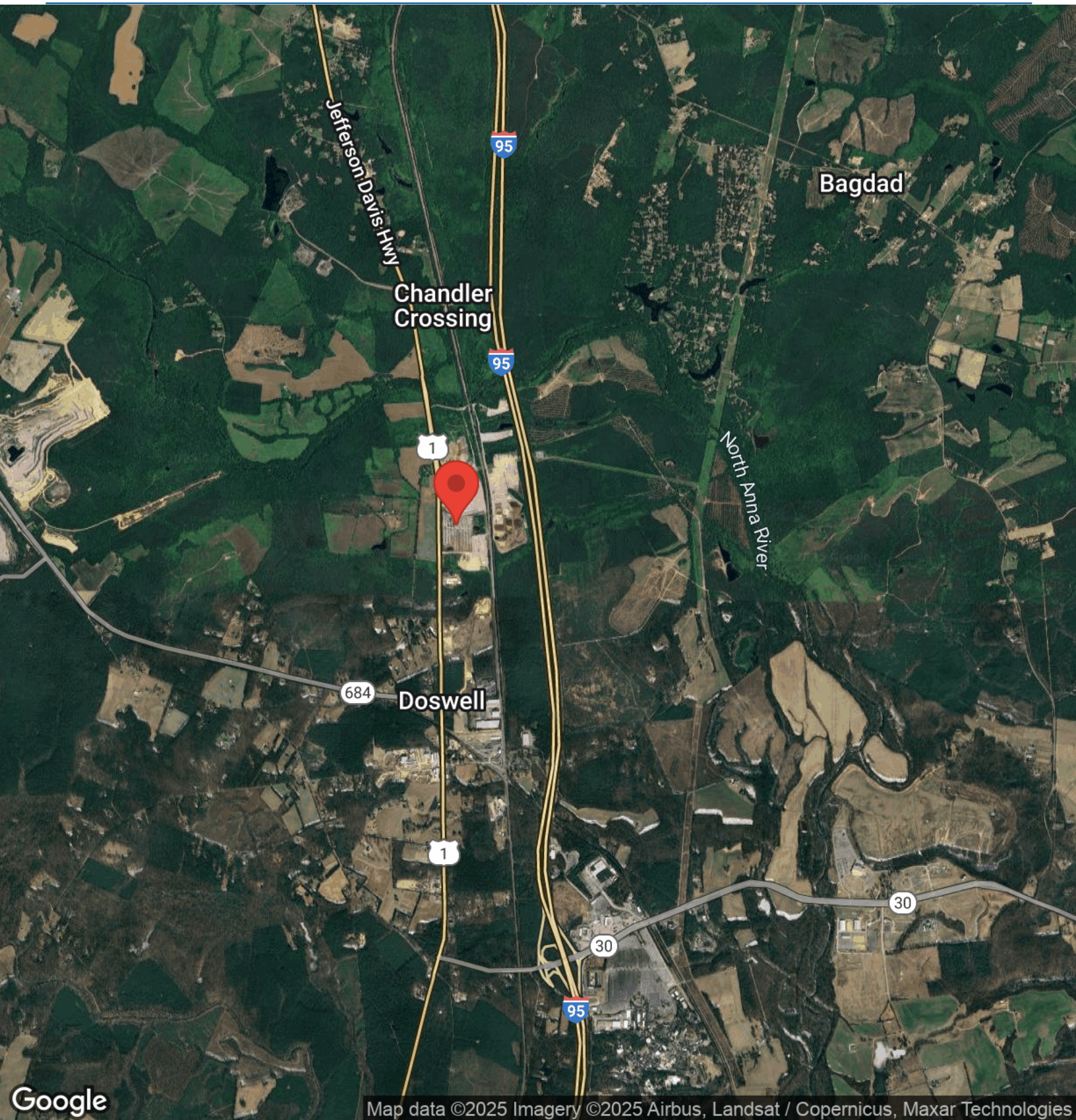


Porter Realty Company, Inc. | 4801 Radford Avenue | P.O. Box 6482 | Richmond, VA 23230 | www.porterinc.com

This information has been prepared by Porter Realty Company, Inc. for marketing purposes only. No representation or warranty, expressed or implied, is made as to the accuracy of the foregoing information. Terms of sale or lease and availability are subject to change or withdrawal without notice.

AERIAL MAP

17226 Washington Highway | Doswell, VA 23047



Kevin Cox, SIOR
(804) 521-1468
Kevin@porterinc.com



Porter Realty Company, Inc. | 4801 Radford Avenue | P.O. Box 6482 | Richmond, VA 23230 | www.porterinc.com

This information has been prepared by Porter Realty Company, Inc. for marketing purposes only. No representation or warranty, expressed or implied, is made as to the accuracy of the foregoing information. Terms of sale or lease and availability are subject to change or withdrawal without notice.