

The Monetary Instrument Matters

William T. Gavin
Vice President
Research Department
Federal Reserve Bank
of St. Louis
P.O. Box 442
St. Louis, MO 63166
(314) 444-8578
gavin@stls.frb.org

Benjamin D. Keen
Assistant Professor
Department of
Economics
Texas Tech University
Lubbock, TX 79409
(806) 742-2466 x228
ben.keen@ttu.edu

Michael R. Pakko
Senior Economist
Research Department
Federal Reserve Bank
of St. Louis
P.O. Box 442
St. Louis, MO 63166
(314) 444-8592
pakko@stls.frb.org

Key words: Monetary Policy Rules, Sticky Prices, Flexible Prices

JEL Classification: E31, E32, E42

Original Version: October 29, 2004, Revised: February 10, 2005

Abstract

This paper revisits the issue of the money supply versus the interest rate as the instrument of monetary policy. Using a dynamic stochastic general equilibrium framework, we examine the effects of alternative monetary policy rules on inflation persistence, the information content of monetary data, and real variables. We show that inflation persistence and the variability of inflation relative to money growth depend on whether the central bank follows a money growth rule or an interest rate rule. With a money growth rule, inflation is not persistent and the price level is much more volatile than the money supply. Those counterfactual implications are eliminated by the use of interest rate rules whether prices are sticky or not. A central bank's utilization of interest rate rules, however, obscures the information content of monetary aggregates and also leads to subtle problems for econometricians trying to estimate money demand functions or to identify shocks to the trend and cycle components of the money stock.

We thank Dick Anderson and Ed Nelson for helpful comments and Michelle Armesto who provided research assistance.

Introduction

Central banks around the world have long settled on the use of interest rates as instruments to implement monetary policy, but until recently, there was no sound theory supporting this choice. The intuition for why interest rate rules dominate is straightforward in a world with sticky prices and interest elastic money demand (see Box insert on page 20). When the demand for real money balances is interest elastic, any shock that affects the path for expected inflation or the real interest rate causes money demand to shift. When the central bank is following a money growth rule, this shift causes the price level to jump. If price adjustment is costly, this jumping can create real distortions. When the central bank is following an interest rate rule, on the other hand, the endogenous money stock absorbs the adjustment. The central bank can accommodate this jump in the money stock almost instantaneously and with little cost.

This article explains the theory behind this intuition by comparing and contrasting the properties of four monetary general equilibrium models. The four models differ along two dimensions: the monetary authority's policy rule, and the nature of price adjustment. Two monetary policy rules are examined: an exogenous money growth rule and an interest-rate rule based on Taylor (1993). Two price adjustment mechanisms are considered: flexible prices found in a typical RBC model and sticky prices found in a typical New Keynesian model. The closest work to this article is Kim (2003) who looks at how the cyclical nature of the real economy depends on the specification of the policy rule and the form of the nominal friction. He concludes that getting the policy rule right is at least as important as getting the nominal frictions right. This paper emphasizes the behavior of money and prices, but also report results for real variables and find results that are consistent with Kim's findings.

Early dynamic stochastic general equilibrium models that featured money as the policy instrument also included flexible prices – and hence implied small effects of monetary shocks on real variables and unrealistically high price-level variability with low inflation persistence; examples include Cooley and Hansen (1989, 1995), Lucas (1990), Fuerst (1992), and Christiano and Eichenbaum (1992).¹ Later, models with sticky prices came to dominate the literature; Cho and Cooley (1995), Kimball (1995), King and Wolman (1996), and Yun (1996) are representative of this approach.²

Kimball (1995), for example, examined a sticky-price model which assumed a constant velocity of money and an exogenous money supply rule. This article demonstrates that two distinct elements omitted from Kimball’s model are crucial for understanding price dynamics. The first is an interest sensitive money demand function and the second is a monetary policy reaction function based on an interest rate rule. King and Wolman (1996) present a model with a shopping time role for money demand that is interest elastic, but most of their analysis assumes that the central bank either controls inflation directly or follows an exogenous money growth rule. They include only a very brief analysis of money growth rules versus interest rate rules.

We extend the methodology of King and Wolman (1996) to analyze more thoroughly important distinctions between flexible-price and sticky-price models, on the one hand, and between interest-rate rules and money-supply rules on the other. Even though central banks do not use money growth rules in practice, we compare that regime to interest rate regimes because much of our conventional wisdom about money and monetary policy comes from analysis using

¹ See Dittmar, Gavin, and Kydland (2005) and Dressler (2003) for recent examples with flexible price models with interest rate rules. Ireland (2003) examines the role of policy in estimated versions of both flexible and sticky price models.

² See also influential papers by Ireland (1996), Rotemberg and Woodford (1997) and McCallum and Nelson (1999). This basic sticky price model is developed rigorously by Woodford (2003) in Chapter 3.

models with money growth rules. We also emphasize a distinction between the steady state inflation rate and the inflation target. Historically, most central banks have not had constant inflation targets, but their targets evolve over time. Here the expected inflation target converges to the steady state in the long run, but it can deviate for a considerable period. Consequently, we consider two types of policy shocks: a highly persistent inflation target shock and a relatively short-lived liquidity shock.

The Model

Our model framework nests the alternative macro models with flexible and sticky prices.³ Agents are infinitely-lived; households get utility from consumption and leisure but need to spend time shopping for consumption goods. Higher money balances can reduce the shopping time for a given level of consumption. The interest elasticity of money demand is a key parameter determining the nature of inflation dynamics. Households consume a composite good that is a combination of outputs from monopolistically competitive firms. Sticky prices are introduced using a Calvo (1983) specification that allows for the possibility of perfect price flexibility as a nested special case. Thus, it is straightforward to hold all other model features constant when comparing sticky-price and flexible-price specifications. Monetary policy is conducted through lump sum monetary transfers that are determined by the central bank's monetary policy rule. Our focus is on the differences implied by policy rules that use the short-term interest rate as an instrument versus those which target money growth directly.

Households: Each period, households maximize the discounted present value of the expected utility they get from consumption and leisure:

³ The version with Calvo-style pricing and a money growth rule was presented by Keen (2004). An appendix provides complete details of our model specification and solution procedures.

$$U = E_0 \sum_{t=0}^{\infty} \beta^t u(c_t, l_t), \quad (1)$$

where β is the household's discount factor, c_t is the consumption bundle, and l_t is leisure time.

The momentary utility function is assumed to take the form

$$u(c_t, l_t) = \ln(c_t) + \chi \frac{l_t^{1-\sigma_1}}{1-\sigma_1},$$

where the values preference parameters σ_1 and χ are positive.

The household maximizes (1) subject to a budget constraint

$$P_t c_t + P_t i_t + M_t + B_t = P_t w_t n_t + P_t q_t k_t + D_t + M_{t-1} + R_{t-1} B_{t-1} + T_t \quad (2)$$

where P_t is the nominal goods price, i_t is investment, k_t is the capital stock which evolves following the capital accumulation process, $k_{t+1} = i_t + (1-\delta)k_t$ and depreciates at rate δ . M_t and B_t are stocks of money and bonds, w_t is the real wage rate, q_t is the real rental price of capital, and R_{t-1} is the gross nominal interest rate on bonds purchased at time $t-1$. The household also receives monetary transfers T_t and distributed profits from the goods-producing sector, D_t .

The household also faces a time constraint which specifies that total time (normalized to unity) can be allocated to leisure, labor, and time spent in transactions-related activities, s_t ,

$$l_t + n_t + s_t = 1 \quad (3)$$

The amount of time households spend shopping, s_t , can be reduced by holding larger money balances relative to nominal consumption expenditures,

$$s_t = \zeta \left(\frac{P_t c_t}{M_t} \right)^\gamma, \quad (4)$$

Money demand elasticities are determined by the curvature parameter $\gamma > 0$, while $\zeta > 0$ is a scale parameter used to calibrate s .

As discussed by Lucas (2000), this type of shopping-time specification implies a set of general equilibrium relationships that resemble a standard log-log money demand function. In particular, after combining some of the first-order conditions from the household's utility maximization problem, optimal real money balances can be expressed as

$$\frac{M_t}{P_t} = \left[\frac{\zeta \gamma w_t c_t^\gamma}{R_t - 1} \right]^{\frac{1}{1+\gamma}} \cdot \frac{1}{R_t} \quad (5)$$

With the calibration $\gamma = 1$, this implies an interest-elasticity of $-1/2$. Note also that the real wage rate and consumption spending enter this relationship in such a way that their combined relationship with real money balances is one-for-one; that is, so long as productivity and consumption move together (as they do on the steady state path), the scale elasticity of this money "demand" function is unity.

Firms: The composite consumption good is a combination of outputs, $y_{j,t}$, produced in period t by monopolistically competitive firms. Each firm's output comes from a production function:

$$y_{j,t} = Z_t f(k_{j,t}, n_{j,t}), \quad (6)$$

where j indicates the number of periods since the firm last adjusted its price, $n_{j,t}$ is the firm's demand for labor, $k_{j,t}$ is the firm's demand for capital, and Z_t is an economy-wide productivity factor. The productivity factor is assumed to follow a stationary autoregressive process:

$$\ln(Z_t) = \rho_Z \ln Z_{t-1} + (1 - \rho_Z) \ln(Z) + \varepsilon_{Z_t}, \quad (7)$$

where Z is the steady state value of Z_t and ε_{Z_t} is a mean zero, independently and identically distributed (i.i.d.) shock. Every period, each firm must determine: (1) the cost minimizing combination of $n_{j,t}$ and $k_{j,t}$ given its output level, the real wage rate, w_t , and the real rental rate of

shock, but the persistence is masked by the surge in prices that occurs contemporaneously with the shock.

The third row shows the responses of the nominal and real interest rates to this shock. Because that initial jump in the price level is unanticipated, it does not affect nominal interest rates. In the flexible-price model, the nominal interest rate increases by about 0.3 percent, which is approximately equal to the expected inflation rate for period 2. The effect on the real rate is near zero in the flexible-price model. With sticky prices, the nominal interest rate rises about 0.75 percent above the steady state, reflecting the higher expected inflation, which is associated with the more gradual response in the price level to the policy shock. The real rate declines for two periods and then gradually returns to the steady state as the effects of the shock dissipate.

The bottom two panels in Figure 1 display the responses of output and hours worked. The higher inflation rate acts as a tax on real money balances, which leads households to spend more time shopping and less time working. With price flexibility, hours worked fall about 0.1 percent below the steady state. With sticky prices and an exogenous money growth rule, neither money nor prices are free to accommodate the jump in money demand. Therefore, the adjustment occurs in real variables. In our sticky-price model, the spike in output is over 80 percent. Given that such a large output response is highly counterfactual, sticky-price models typically incorporate additional frictions that limit the adjustment of capital and/or labor after a monetary policy shock.¹⁰

Shifting our analysis to models with an interest rate policy rule, Figure 2 shows how our models respond to an inflation target shock when the Fed is using the Taylor rule. The price level does not jump following the inflation target shock. The higher rate of inflation causes money

¹⁰ For example, by adding investment adjustment costs to this sticky-price model, one can get reasonable-looking changes in output and larger changes in the real interest rate.

demand to shift down, but with an interest rate rule, the money stock declines in order to clear the money market. The size of the fall in the money supply depends on the interest elasticity of money demand. As money demand becomes more interest-elastic, the size of the shift needed to clear the money market gets larger. Price level, inflation rate, and interest rate responses are very similar under both the flexible- and sticky-price specifications.

Output responses are much different under the alternative price specifications. In the flexible-price model, there are small negative effects on output associated with the inflation tax on money holdings. In the sticky-price case, output and hours rise, but the effects are much more reasonable than with a money supply rule.

Transitory Policy Shocks. Figure 3 shows the response of the economy to a transitory money shock. The immediate impact on the price level is smaller in the sticky price model than in the flexible price model. This is easiest to see in the second row of panels which show that the brief spike in inflation is smaller in the sticky-price specification. In neither of these cases, however, does inflation exhibit any measurable persistence. In the third row, we see that the effect on interest rates is small. In the flexible price case, all the effect is on the nominal interest rate which declines temporarily as the price level returns to the original steady state path. In the sticky price case, the real return falls by less than in the flexible price case because the price level never strayed far from its steady state path. Output and hours worked both rise, but the size of the effect is an order of magnitude larger with sticky prices.

Note that for the sticky price case, we have a pattern of dynamics that corresponds to the textbook description of a liquidity effect. The decline in the nominal interest rate is associated with a corresponding reduction in the real interest rate and the brief surge in output; the relatively large response of output is due to the presence of frictions restricting movement in

both the price level and the money supply. Again, the shift in money demand requires large shifts in the real variables.

Figure 4 shows the effect of a transitory liquidity shock when the central bank is using an interest rate rule. The 1 percent shock is specified so that a positive shock raises the interest rate. In both models, we see that the price level rises and the money supply declines. The price increase is large and permanent in the flexible price model. In the sticky price case, where only a subset of the firms can react to the shock, its transitory nature causes a smaller adjustment and an eventual decline in the price level below the initial equilibrium path. The third row of panels shows the response of real and nominal interest rates. The nominal rate rises by more in the flexible price model because the expected inflation rate in periods 3 and beyond are larger. In the sticky price model, the real interest rate rises slightly.

The output effects have opposite signs, but are very small in the flexible price case. In the sticky price model, a 1% shock to the short-term interest rate raises output 5% on impact, but the effect dissipates quickly. Note that this type of transitory policy shock—which is standard in the literature on interest rate rules—does not display a textbook liquidity effect under either the sticky-price or flexible-price specification.

Technology Shocks. The technology shock variable, z_t , is specified as affecting the production function directly and therefore engenders a direct effect on output regardless of the nature of the policy rule or whether prices are sticky or flexible. However, the nature of the central bank's policy rule affects the endogenous responses of inputs to the production function—which, in turn, affects the overall response of output. In this regard, the nature of the monetary policy reaction function is quantitatively important for the evolution of real variables only when prices are assumed to be sticky.

The left column of Figure 5 shows the response of the flexible-price, money supply rule economy. This setting serves as a convenient baseline for our comparison, because it most closely approximates an RBC model in which there are no monetary distortions at all. As is typical of this type of shock, the temporary but persistent increase in output that results from the direct effect of the disturbance is enhanced by an increase in the real wage rate and employment. Consequently, the initial rise in output is about 50 percent larger than the direct effect of technology itself would imply. The increase in factor productivity also engenders an investment response that serves as a propagation mechanism.

However, as widely noted in the RBC literature, this mechanism is rather weak: if there were no persistence in the technology shock there would be little persistence in output. Because monetary policy does not respond in any way to the shock under a money supply rule, the increase in output implies that the price level falls below trend—the ensuing anticipated disinflation requires an upward adjustment to real money balances, which takes place through a downward jump in the price level. As we saw with shocks to the inflation trend, the shifts in money demand are accommodated by jumps in the price level.

When prices are sticky and the central bank implements a money supply rule, as shown in the right column of Figure 5, the responses of the model to a technology disturbance are dramatically different: The initial downward jump in the price level is only half the size of the jump with flexible prices. Inflation is not persistent in either case. In both cases, the real rate responds as predicted in the benchmark real cycle model. The responses of nominal rates are small, but in opposite directions. The most dramatic effects occur in output and hours worked, which decline sharply in the sticky price model.¹¹ There is also an initial decline in investment

¹¹ Dotsey (1999) shows that changes in interest rate smoothing can have large real effects in a sticky price model.

(not shown), so that the endogenous propagation channel of capital accumulation is even less quantitatively important.

The key to understanding the responses of this version of the model to productivity shocks is in the nature of the Calvo pricing process: With a majority of firms unable to lower prices in response to the shock, relative demand for their products drops off, moving them back along their marginal cost curves. With higher costs and lower final demand, firms scale back their factor demands dramatically until after they have an opportunity to adjust prices. When a larger proportion of firms is assumed to change prices each period, the unorthodox response of output and work does not occur. With $\eta = 1/2$, for example, the negative impact response of hours worked and output disappears. Note also that the negative effect can be delayed if there are moderate investment adjustment costs in the model. After prices have adjusted further—after four periods or more in the present calibration—the model economy has adjusted to a trajectory that resembles that of the flexible-price specification.

The pattern of responses shown in the lower right hand panel of Figure 5 demonstrates the limitations of a recent influential assertion by Galí (1999). Using a long-run identifying assumption in a VAR model, Galí found that a permanent shock to technology is associated with an initial decline in work effort. From this finding, he argues that sticky-prices must play a role in the propagation of technology shocks.

But while our model predicts this type of response when the central bank is following a money growth rule, the response does not occur when policy follows an interest rate rule.¹² As shown in Figure 6, the interest rate rule effectively eliminates the difference between the sticky price and flexible price models. The price response is muted by interest rate rule, compared to

¹² Note that the negative effect on hours worked can be delayed if there are moderate investment adjustment costs in the model with a money growth rule.

the jump that is illustrated in Figure 5. Because interest rate targeting smoothes price changes, the gap that develops between the firms that can change prices and those that cannot remains small, and the model responses are nearly identical. In other words, the use of an interest rate rule, by eliminating large price-level swings, insulates the real responses of the model from the sticky-price distortions that arise under a money growth rule.

Time-Series Properties of Money and Prices

This section documents how the time-series properties of money and inflation differ under the alternative monetary policy regimes.¹³ There is a large seasonal element in money but not in prices or interest rates. Mankiw, Miron, and Weil (1987) showed that a strong seasonal component in U.S. interest rates disappeared after the creation of the Federal Reserve in 1913. Barsky and Miron (1989) showed that there are large seasonal components in quantities but not in prices. Both these empirical regularities are consistent with our model of a central bank that uses an interest rate procedure to implement monetary policy.

We begin with a brief look at data for the G-7 countries for the period from 1980:Q2 to 1998:Q4. We use data on interest rates, the Consumer Price Index (CPI) inflation, and M1 growth, which are not seasonally adjusted.¹⁴ To calculate the relative persistence in M1 growth and inflation, we calculated the largest root of each series using an augmented Dickey-Fuller equation. The relative volatility is measured by the standard error of the regression. We included five lags of quarterly data to account for the remaining serial correlation and the predictable seasonal component. The results are shown in the top panel of Table 2. The first

¹³ See Dressler (2003) and Sustek (2004) for models that include both inside and outside money and attempt to account for the dynamic behavior of the monetary aggregates.

¹⁴ We used the *International Financial Statistics* measure of currency outside banks for the UK. We did not include 1998 for the UK because of a large break in the series in 1998:Q2.

column reports the standard error of the equation for the augmented Dickey-Fuller regression for CPI inflation. The second column reports the largest root in the CPI regression. The third and fourth columns report the results for M1.

The standard error of the equation (SEE) for M1 is always larger than for the CPI. On average it is almost four times larger. For the G-7 average, the largest root in CPI inflation is 0.67 and the largest root in M1 is 0.36. As the results show, there is a large dispersion across countries in the estimates of persistence of M1 growth.¹⁵

The bottom panel in Table 2 reports results from our four alternative models under the baseline calibration shown in Table 1. Included are the standard deviations and the first-order autoregressive coefficients for inflation and money growth. We compute statistics for our model economies subject to technology shocks and persistent money growth shocks (with a money growth rule) or persistent inflation target shocks (with the Taylor rule). Those experiments do not include the short-run liquidity shocks. The first two rows of panel (b) report the results for the money growth rule and the next two rows report the results for the Taylor rule. The policy rule makes a much bigger difference than does the degree of price flexibility. With a money growth rule, the standard deviation of the inflation rate is always greater than the standard deviation of the money growth rate. The first-order autocorrelation for inflation is near zero. The first-order autocorrelation coefficient for money growth reflects (but is substantially smaller than) the persistence in the shock to the money growth trend.

The model generated data more closely resemble observed economic data when we use an interest rate rule. Money growth is more variable than inflation. Under both pricing regimes,

¹⁵ If we use data on currency and reserves, we find that the money growth rates are much more volatile than when we use M1. The autocorrelation functions of currency and reserve aggregates are dominated by negatively correlated seasonal components. For the United States, seasonally adjusting the data adds persistence to the time series for both money growth and inflation. The adjustment reduces the variability of money growth, but not inflation.

the first-order autocorrelation of inflation is near 0.7, but money growth exhibits no autocorrelation.¹⁶

The last two rows in panel (b) show that our results do not depend on persistent shocks to the nominal growth trend. When there are only technology shocks, inflation and money growth are about half as volatile, but the relative variability of money growth and inflation is approximately unchanged. With interest rate rules, inflation is as persistent when the only shocks are from technology as it is when we also include persistent shocks to the inflation target.

The high volatility of the money supply that accompanies interest rate targeting obscures the information content of monetary aggregates. Cooley and LeRoy (1981) document problems that econometricians have faced trying to estimate money demand functions. One of the ironic characteristics of the New Keynesian paradigm is that the model embeds the quantity theory of money as a long-run proposition, but money rarely appears in policy rule. McCallum (2001) explores the reasons why money does not appear in the policy rule and concludes with support for the notion “that policy analysis in models without money, based on interest rate policy rules, is not fundamentally misguided.”

Conclusion

A comparison of flexible- and sticky-price models with both money growth and interest rate policy rules leads to the following conclusions. First, interest rate rules rather than money growth rules can capture the degree of inflation persistence and the relative volatility of the price level observed in the data.

¹⁶ This theory also that univariate models will underestimate the persistence of shocks to the money growth trend when using data generated under interest rate regimes. For example, Cooley and Hansen (1989, 1995) estimate the autocorrelation of monetary shocks to be just 0.5. Using cross-section price and output data and long-run monetary neutrality to achieve identification, Balke and Wynne (2004) estimate that the permanent component in M2 growth is highly persistent—matching broad movements in inflation.

Second, with sticky prices the real effects of transitory policy shocks differ under the different policy rules. When the central bank uses a money growth rules, the real effects are much too large in the sticky-price model unless other frictions, such as investment adjustment costs, are also included. But central banks do not use money growth rules, so this counterfactual implication does not seem important. It does, however, suggest a reason why central banks choose to use interest rate instruments.

Third, and most importantly for model builders, when shocks are highly persistent, the distinction between monetary policy rules is more important for price dynamics than is the choice of the price-adjustment assumption. The reason for this can be seen in how money demand adjusts under an interest rate rule. In this case, desired price changes are relatively smooth and there is not much difference between flexible- and sticky-price equilibria. A corollary of this result is that the response of nominal variables such as inflation and the money supply are very similar in both flexible- and sticky-price models when the central bank uses an interest rate rule. An important implication of this result is that it will be difficult to use information about actual price adjustment to distinguish between macro theories.

Finally, a central bank's use of interest rate rules obscures the information content of monetary aggregates and leads to subtle problems for econometricians trying to estimate money demand functions or to identify shocks to the trend and cycle components of the money stock. Highly persistent money shocks will be masked by the high frequency volatility associated with keeping the interest rate relatively constant in the short run.

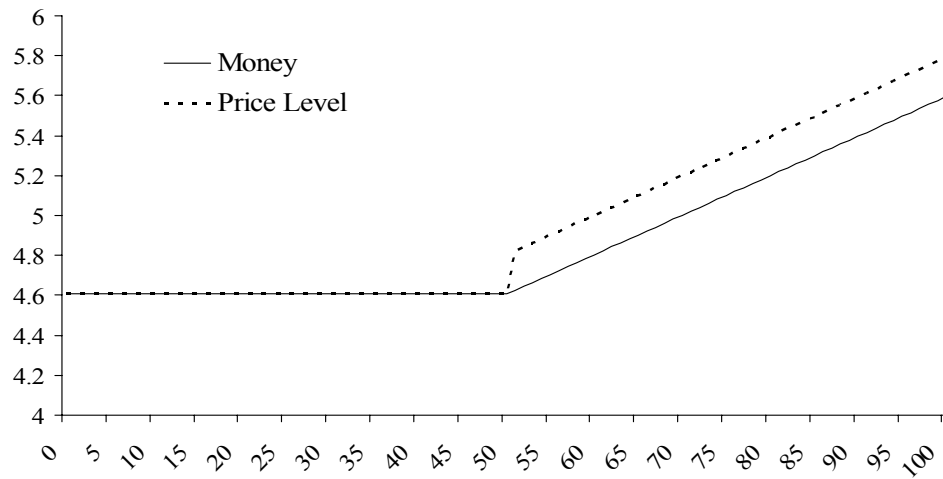
Box insert: **Money Demand and Interest Rate Rules**

The intuition for the difference between an interest rate and a monetary aggregate instrument can be gleaned from the analysis of money demand in Friedman (1969). The demand for real money balances is a function of a scale variable, such as income, and an opportunity cost variable, such as the nominal interest rate, such that $M_t^D / P_t = H(Y_t^+, \bar{R}_t^-)$. Panel (a) in the accompanying figure replicates Figure 3 from Friedman's illustration of the response of money demand and the price level following the central bank's surprise decision to permanently raise the money growth trend (inflation) from zero to a positive number—2 percent in panel (a). The nominal rate rises by the size of the increase in the inflation rate and the demand for money drops immediately. Since the central bank has exogenously fixed the money growth rate, the price level must rise to accommodate the fall in real balances. In an economy where the long run expected inflation trend is subject to shocks, the inflation rate is highly variable relative to the money growth rate.

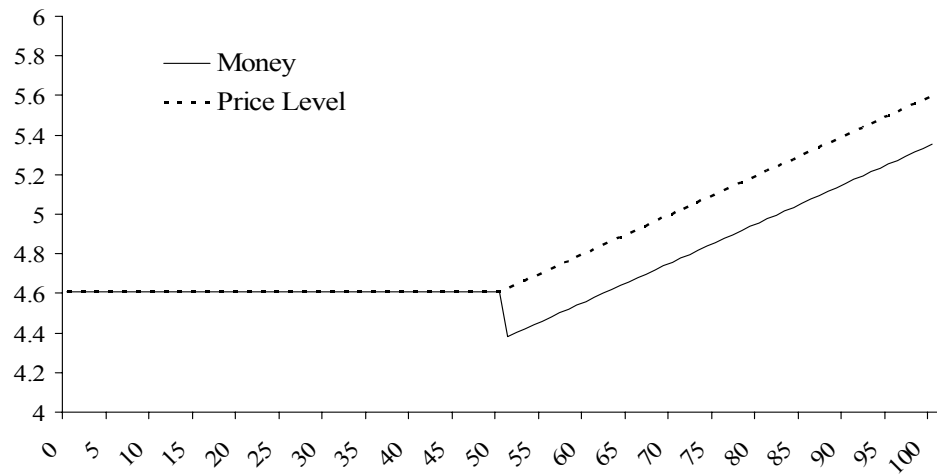
Panel (b) illustrates what happens if the central bank uses the interest rate as the monetary policy instrument. In that case, the credible announcement of 2% inflation requires raising the nominal interest rate target by 2%. The increase also leads to an immediate drop in the demand for real money balances. With a nominal interest rate rule, however, the money supply is endogenous and inflation is fixed by the policy rule. It is the money stock, rather than the price level, that responds by shifting downward to clear the money market. Hence, in an economy with stochastic inflation and an interest-rate rule for monetary policy, the money growth rate is much more variable than the inflation rate. That result is consistent with our observations from modern economies where central banks generally use the nominal interest rate to implement policy.

Box Figure: Monetary Policy Rules and a Change in the Inflation Target

Panel (a) Money Growth Rule*



Panel (b) Interest Rate Rule*



* There is a shift from 0 to 2 percent in the inflation objective in period 50.

References

- Balke, Nathan S., and Mark A. Wynne. "Sectoral Effects of Monetary Shocks," Federal Reserve Bank of Dallas Manuscript, November 2004.
- Barsky, Robert B., and Jeffrey A. Miron. "The Seasonal Cycle and the Business Cycle," *Journal of Political Economy* 97 (June 1989), 503-534.
- Calvo, Guillermo A. "Staggered Prices in a Utility Maximizing Framework," *Journal of Monetary Economics* 12 (September 1983), 383-398.
- Cho, Jang-Ok, and Thomas F. Cooley. "The Business Cycle with Nominal Contracts," *Economic Theory* 6 (1995), 13-33.
- Christiano, Lawrence J. and Eichenbaum, Martin. "Liquidity Effects and the Monetary Transmission Mechanism," *American Economic Review* 82 (1992), 346-353.
- Cooley, Thomas F. and Hansen, Gary D. "The Inflation Tax in a Real Business Cycle Model," *American Economic Review* 79 (September 1989), 733-748.
- Cooley, Thomas F. and Hansen, Gary D. "Money and the Business Cycle?" Chapter 7, in Thomas F. Cooley (eds.), *Frontiers of Business Cycle Research*, Princeton: Princeton University Press, 1995, 175-216.
- Cooley, Thomas F. and Stephen F. LeRoy. "Identification and Estimation of Money Demand," *American Economic Review* 71 (December 1981), 825-844.
- Dittmar, Robert D., William T. Gavin, and Finn E. Kydland. "Inflation Persistence and Flexible Prices," *International Economic Review* 46 (February 2005), 245-261.
- Dotsey, Michael, "The Importance of Systematic Monetary Policy for Economic Activity," Federal Reserve Bank of Richmond *Economic Quarterly* 85 (Summer 1999), 41-59.
- Dressler, Scott. "Monetary Policy Regimes and Causality," Manuscript, University of Texas, October 2003.
- Erceg, Christopher J., and Andrew T. Levin. "Imperfect Credibility and Inflation Persistence," *Journal of Monetary Economics* 50 (May 2003), 915-44.
- Friedman, Milton. *The Optimum Quantity of Money—And Other Essays*, Aldine Publishing Company, Chicago, 1969.
- Fuerst, Timothy S. "Liquidity, Loanable Funds, and Real Activity," *Journal of Monetary Economics* 29 (February 1992), 3-24.

- Gali, Jordi, "Technology, Employment, and the Business Cycle: Do Technology Shocks Explain Aggregate Fluctuations?" *The American Economic Review* 89 (March 1999), 249-271.
- Goodfriend, Marvin. "Interest Rate Policy and the Inflation Scare Problem: 1979-1992," Federal Reserve Bank of Richmond *Economic Quarterly* 79 (Winter 1993), 1-24.
- Ireland, Peter N. "Changes in the Federal Reserve's Inflation Target: Causes and Consequences," Manuscript, Boston College, January 2005.
- Ireland, Peter N. "Endogenous Money or Sticky Prices?" *Journal of Monetary Economics*, 50 (November 2003), 1623-1648.
- Ireland, Peter N. "The Role of Countercyclical Monetary Policy," *Journal of Political Economy* 104 (August 1996), 704-723.
- Keen, Benjamin D. "In Search of the Liquidity Effect in a Modern Monetary Model," *Journal of Monetary Economics* 51 (October 2004), 1467-1494.
- Kim, Soyoung. "Monetary Policy Rules and Business Cycles," *Scandinavian Journal of Economics* 105(2) (2003), 221-245.
- Kimball, Miles S. "The Quantitative Analytics of the Basic Neomonetarist Model," *Journal of Money, Credit and Banking* 27 (November 1995), 1241-1277.
- King, Robert G. and Mark Watson, "The Solution of Singular Linear Difference Systems Under Rational Expectations" *International Economic Review* 39 (1998), 1015-1026.
- King, Robert G. and Mark Watson, "System Reduction and Solution Algorithms for Singular Linear Difference Systems Under Rational Expectations," *Computational Economics* 20 (2002), 57-86.
- King, Robert G. and Alexander L. Wolman. "Inflation Targeting in a St. Louis Model of the Twenty-First Century," Federal Reserve Bank of St. Louis *Review*, May/June 1996, pp. 83-107.
- Kozicki, Sharon, and Peter A. Tinsley. "Permanent and Transitory Policy Shocks in an Empirical Macro Model with Asymmetric Information," CFS Working Paper No. 2003/14, October 2003.
- Lucas, Robert E., Jr., "Inflation and Welfare," *Econometrica* 68 (March 2000), 247-274.
- Lucas, Robert E., Jr. "Liquidity and Interest Rates," *Journal of Economic Theory* 50 (April 1990), 237-264.
- Mankiw, N. Gregory, Jeffrey A. Miron, and David N. Weil. "The Adjustment of Expectations to a Change in Regime: A Study of the Founding of the Federal Reserve," *American Economic Review* 77 (June 1987), 358-374.

- McCallum, Bennett T. and Edward Nelson. "An Optimizing IS-LM Specification for Monetary Policy and Business Cycle Analysis," *Journal of Money, Credit and Banking* 31 (August 1999, Part I), 296-316.
- McCallum, Bennett T. "Monetary Policy Analysis in Models without Money," Federal Reserve Bank of St. Louis *Review*, July/August 2001, 145-160.
- Rotemberg, Julio and Woodford, Michael. "An Optimization-Based Econometric Framework for the Evaluation of Monetary Policy," *NBER Macroeconomics Annual*, 1997, pp. 297-345.
- Sustek, Roman. "Monetary Aggregates and Structural Shocks," Manuscript, Carnegie Mellon University, August 2004.
- Taylor, John B. "Discretion versus Policy Rules in Practice," *Carnegie-Rochester Conference Series on Public Policy* 39 (1993), 195-214.
- Woodford, Michael. *Interest & Prices*, Princeton University Press: Princeton, 2003.
- Yun, Tack. "Nominal Price Rigidity, Money Supply Endogeneity, and Business Cycles," *Journal of Monetary Economics* 37 (April 1996), 345-370.

Table 1: Baseline Calibration

Model Parameters

| | | |
|---------------------------------|---------------|--|
| Utility | σ_1 | 7/9 |
| Steady state market labor share | n | 0.3 |
| Household discount factor | β | 0.99 |
| Shopping time | γ | 1 |
| Capital share of output | α | 0.33 |
| Depreciation rate | δ | 0.025 |
| Price elasticity of demand | ε | 6 |
| Probability of price adjustment | η | .25 => sticky prices 1 => flexible prices |

Policy Reaction

| | | |
|-----------|------------|-------|
| inflation | θ_p | 0.5 |
| output | θ_y | 0.125 |

Persistence

| | | |
|----------------------|-----------------------|------|
| Technology shock | ρ_z | 0.95 |
| Nominal growth shock | $\rho_\pi = \rho_\mu$ | 0.95 |
| Liquidity shock | $\rho_v = \rho_u$ | 0.3 |

Standard Deviation

| | | |
|----------------------|--------------|--------|
| technology shock | σ_z | 0.0075 |
| Nominal growth shock | σ_π | 0.004 |

Table 2: Statistical Properties of Nominal Variables (1980:Q2 to 1998:Q4)

| | CPI | | M1 | |
|------------------------|-------|---------|-------|---------|
| Panel a. | | Largest | | Largest |
| Country results | SEE | root | SEE | root |
| Canada | 0.47 | 0.76 | 2.52 | 0.15 |
| France | 0.34 | 0.82 | 1.22 | 0.69 |
| Germany | 0.45 | 0.71 | 2.12 | -0.33 |
| Italy | 0.41 | 0.91 | 1.67 | 0.54 |
| Japan | 0.50 | 0.43 | 1.37 | 0.44 |
| UK | 0.62 | 0.64 | 1.39 | -0.68 |
| US | 0.36 | 0.47 | 1.18 | 0.77 |
| G-7 average | 0.45 | 0.68 | 1.64 | 0.36 |
| Panel b. | | | | |
| Model results | | | | |
| Money growth rule | Stdev | AR(1) | Stdev | AR(1) |
| Sticky prices | 2.22 | 0.03 | 0.51 | 0.70 |
| Flexible prices | 4.36 | -0.07 | 0.51 | 0.69 |
| Taylor rule | | | | |
| Sticky prices | 0.60 | 0.72 | 10.55 | -0.06 |
| Flexible prices | 0.55 | 0.70 | 9.56 | -0.08 |
| Technology shocks only | | | | |
| Sticky prices | 0.34 | 0.73 | 5.41 | -0.04 |
| Flexible prices | 0.28 | 0.71 | 4.62 | -0.07 |

Notes: The CPI and M1 data come from the OECD Main Economic Indicators. For the United Kingdom, M1 was not available, so we used currency outside banks ending in 1997:Q4. Exact sources and data definitions are listed in the appendix. An augmented Dickey Fuller equation with 5 lags of quarterly data was used to measure the largest root in M1 and CPI growth rates. The standard error of the equation (SEE) was used to measure the volatility in these series. In other cases, we report the standard deviation—Stdev—and first autocorrelation—AR(1)—in the growth rate series. The baseline calibration was used in the model calculations.

Figure 1: Responses to a Persistent Money Growth Shock with a Money Growth Rule

Flexible Prices

Sticky Prices

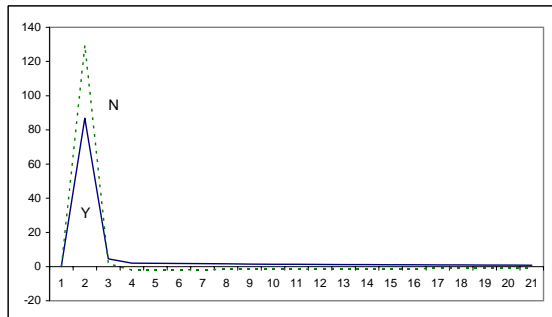
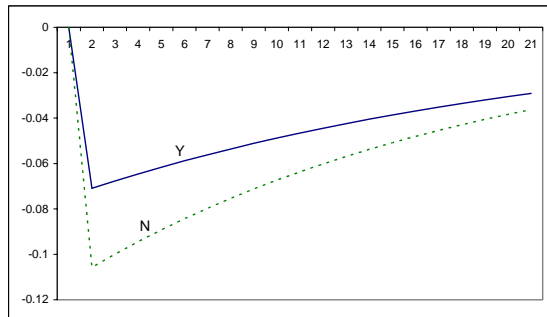
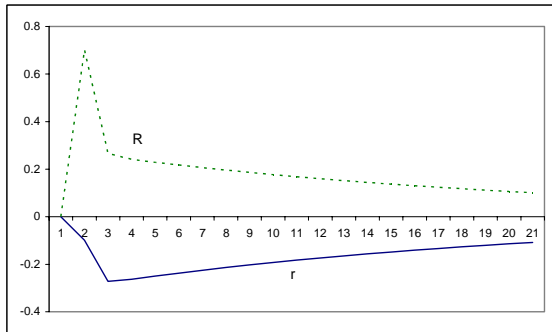
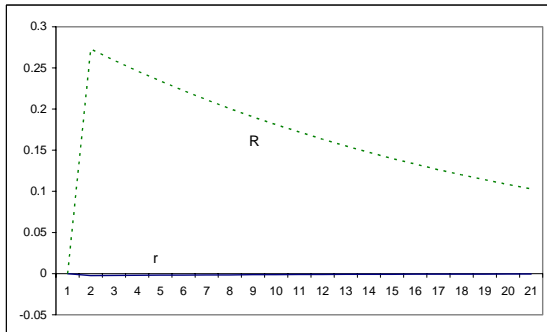
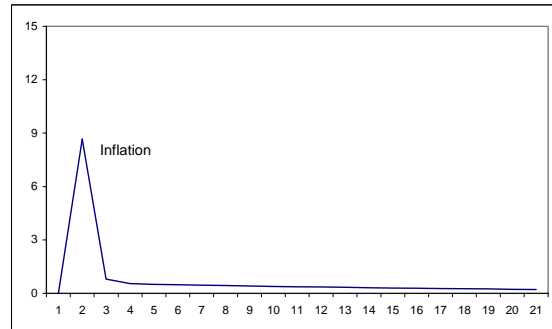
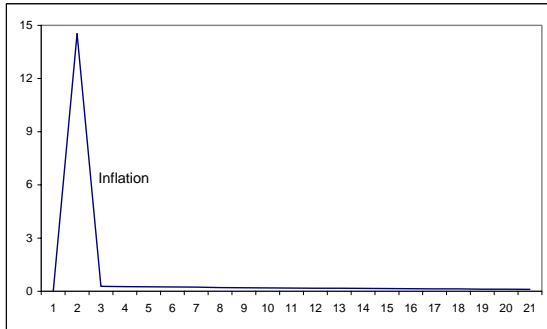
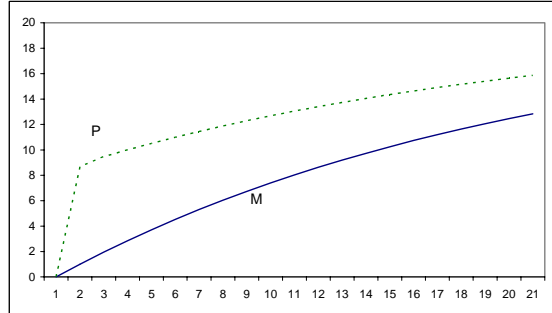
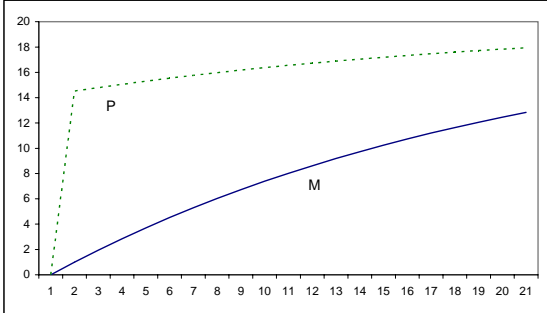


Figure 2: Responses to an Inflation Objective Shock with an Interest Rate Rule

Flexible Prices

Sticky Prices

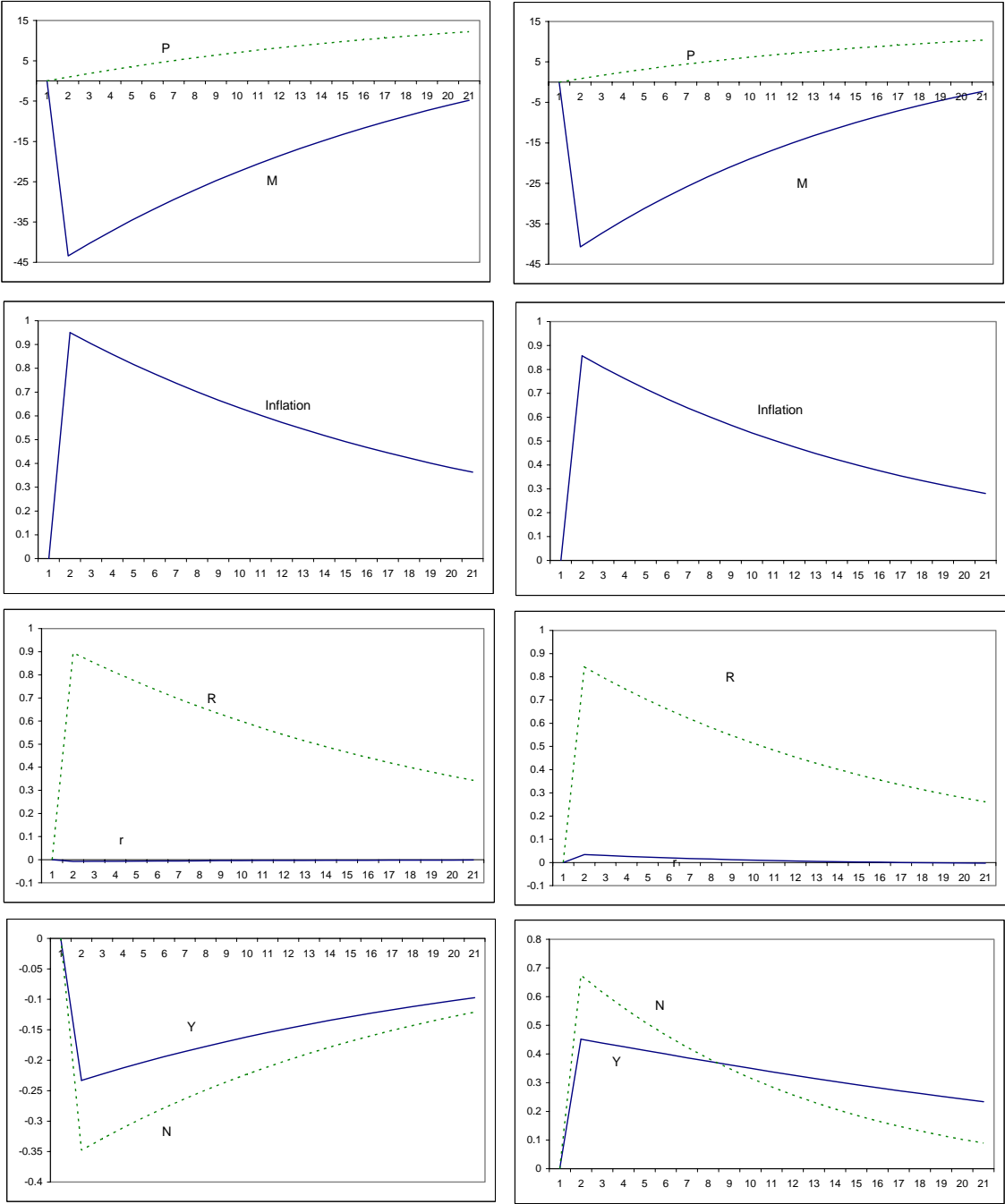


Figure 3: Responses to a Transitory Policy Shock in a Money Growth Rule

Flexible Prices

Sticky Prices

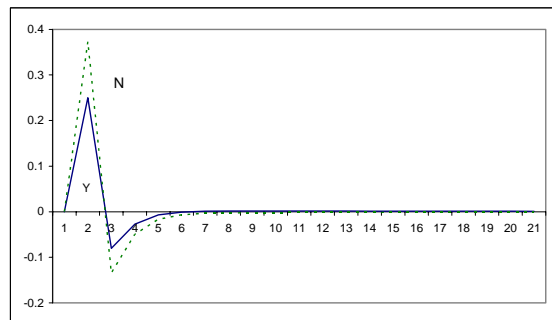
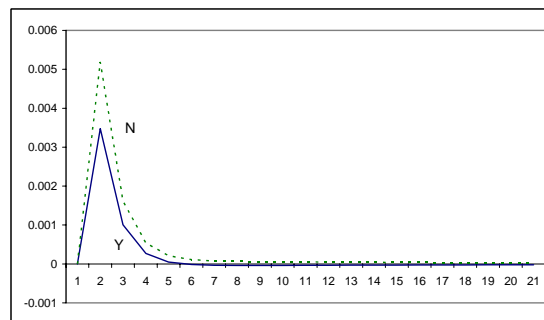
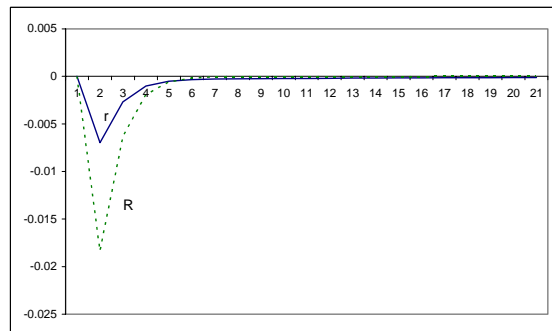
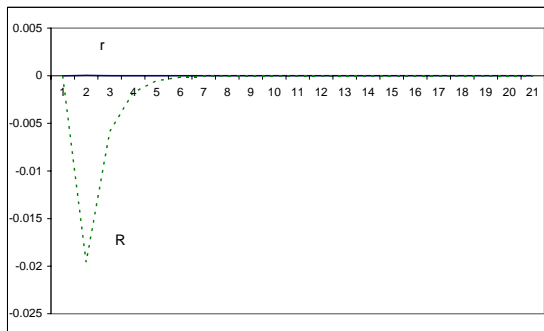
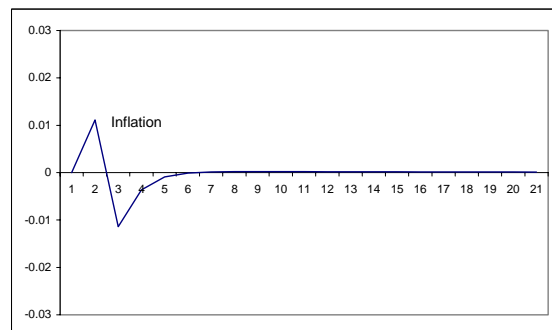
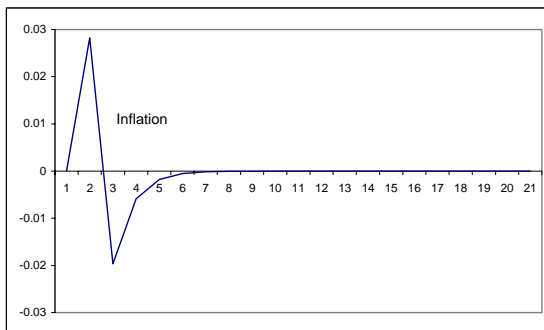
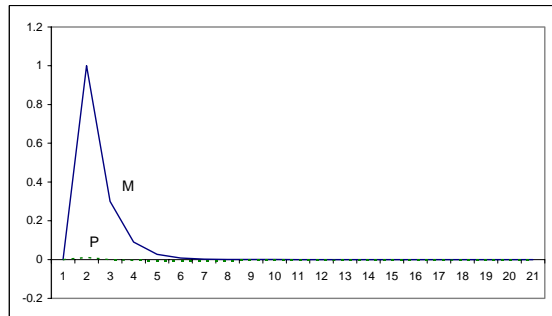
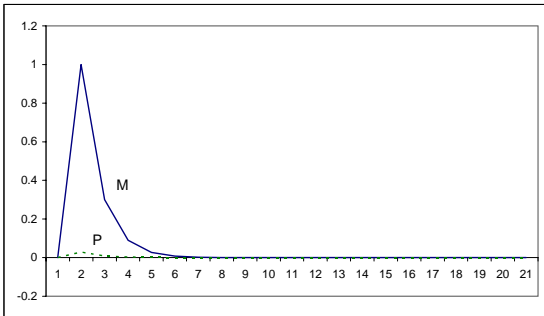


Figure 4: Responses to a Transitory Policy Shock in an Interest-Rate Rule

Flexible Prices

Sticky Prices

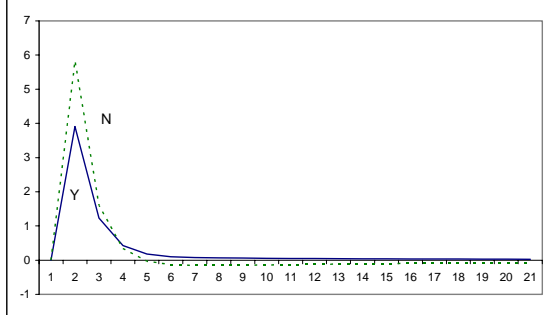
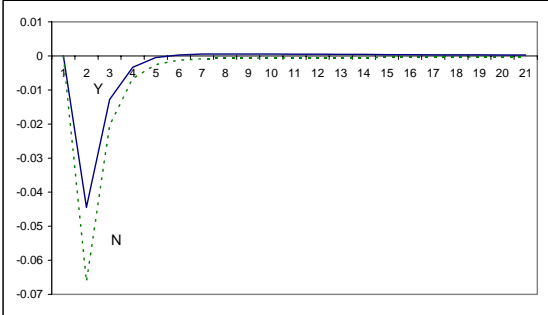
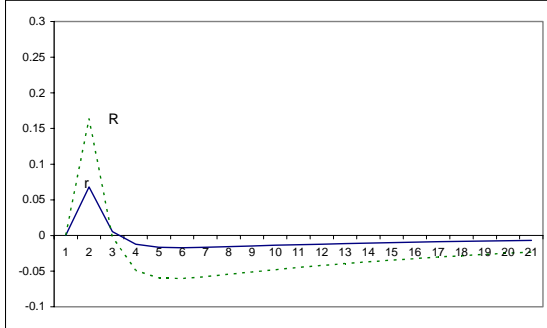
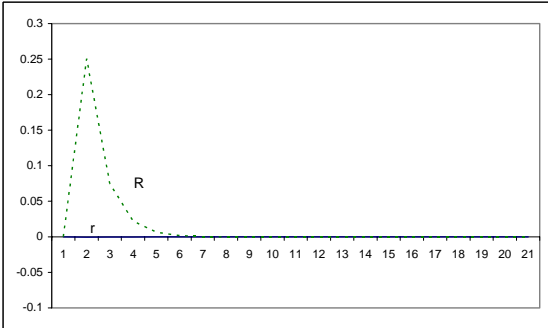
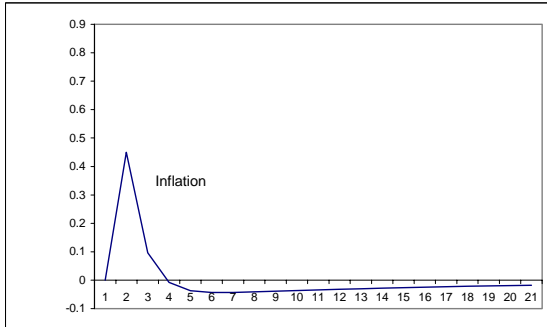
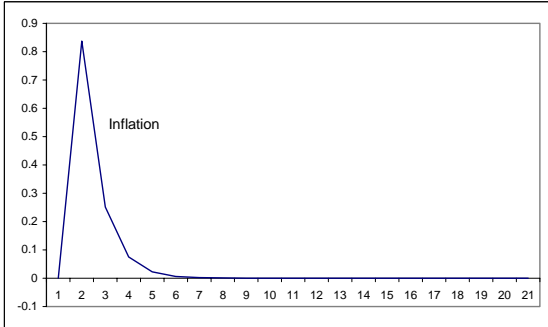
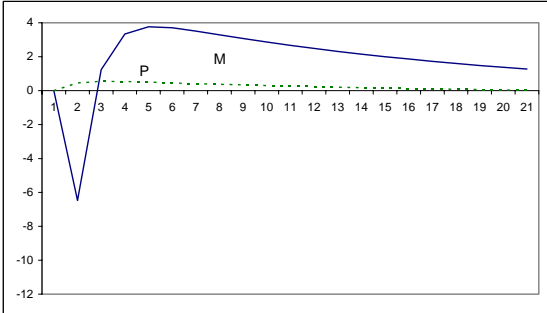
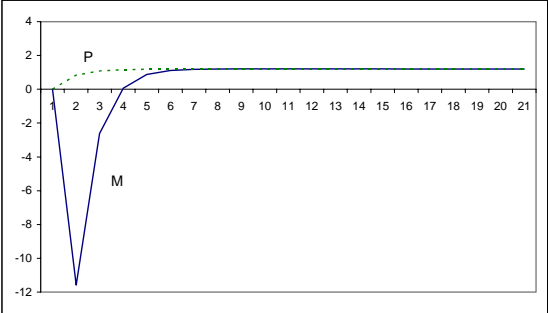


Figure 5: Responses to a Technology Shock with a Money Growth Rule

Flexible Prices

Sticky Prices

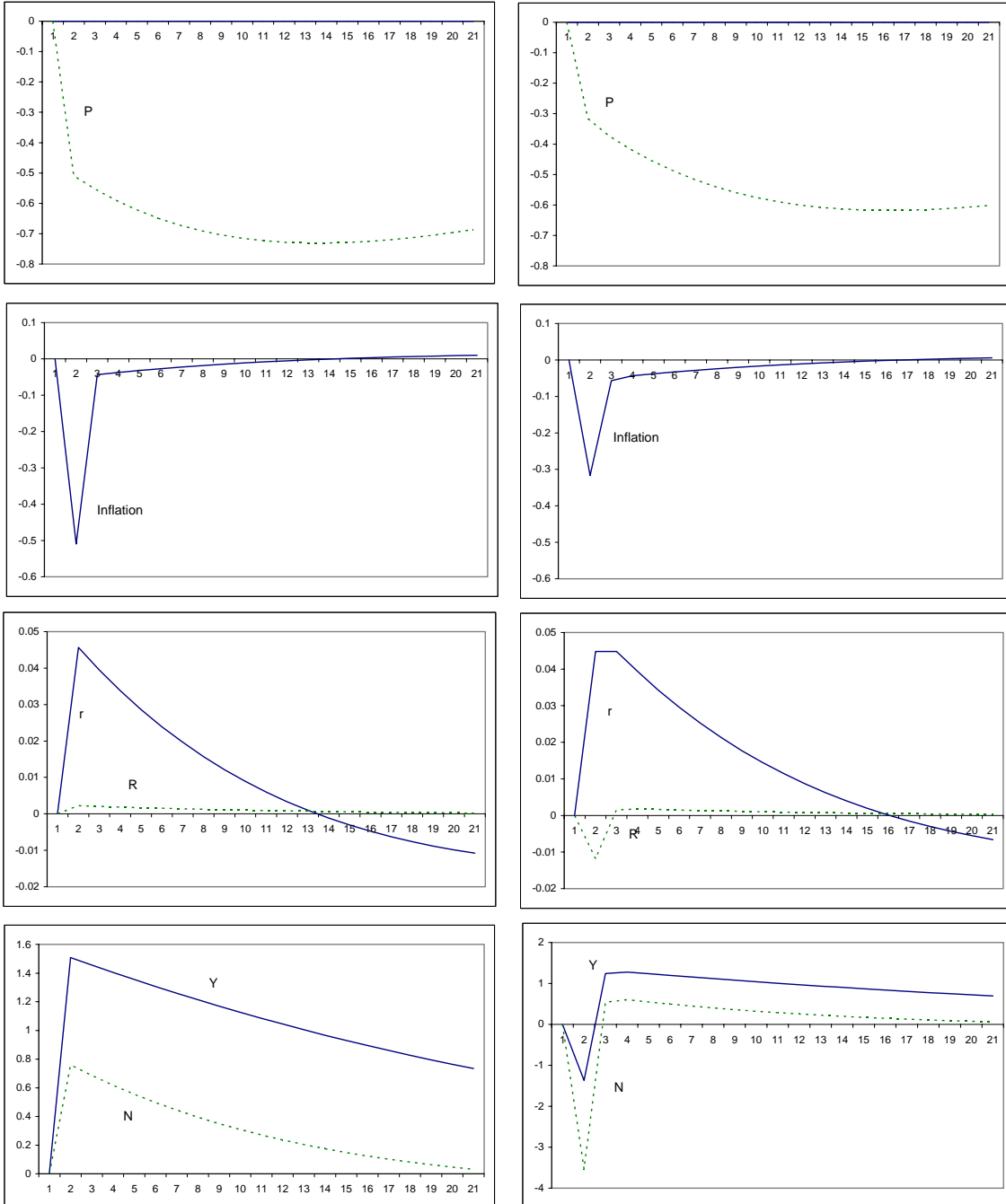
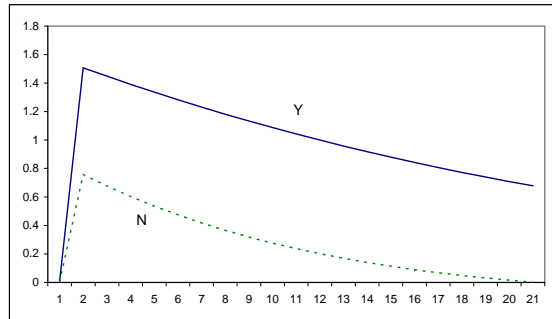
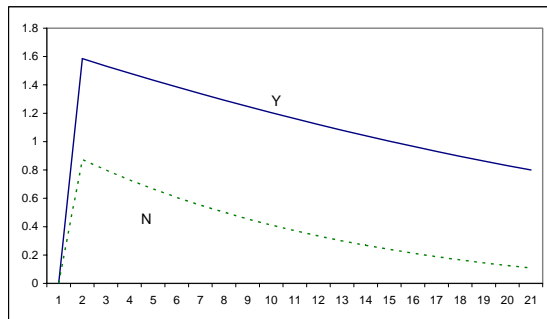
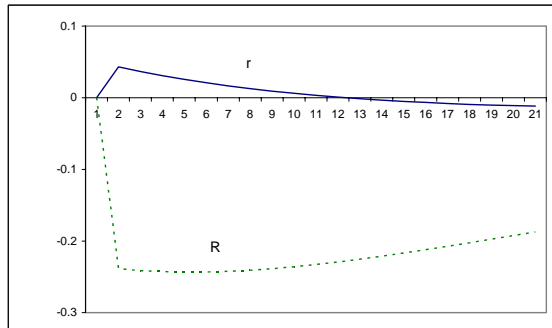
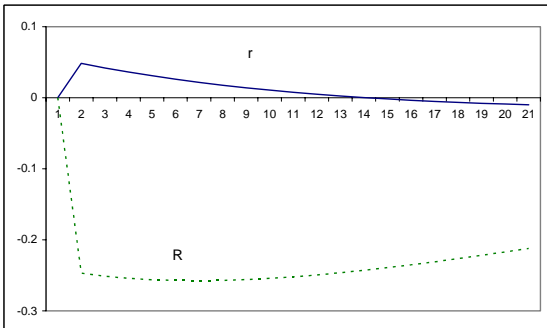
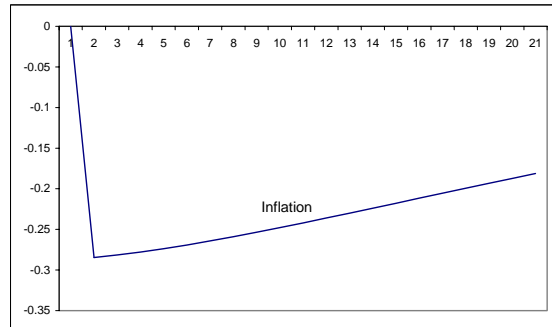
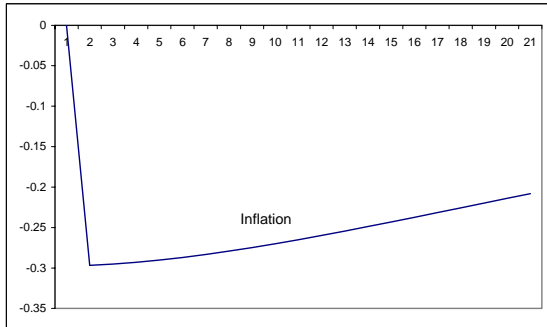
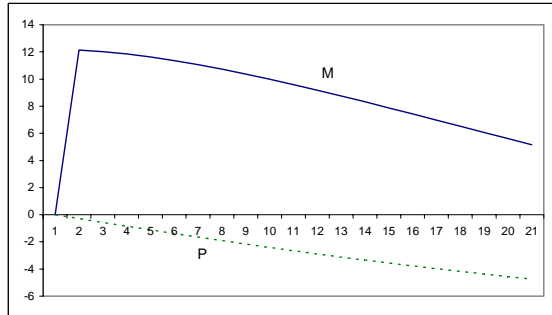
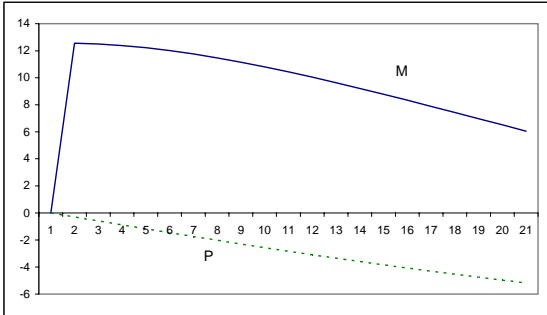


Figure 6: Responses to a Technology Shock with an Interest Rate Rule

Flexible Prices

Sticky Prices



Technical Appendix to “The Monetary Instrument Matters”

This appendix provides detailed information on the sticky and flexible price models. It outlines the relevant equations in the model, determines the steady state, and linearizes the model. Information in this appendix provides the necessary information to replicate the simulations of this paper, using the solution methods outlined in King and Watson [1998, 2002].

The Equilibrium

These equations describe the equilibrium for the households’ problem. Households are infinitely lived agents who seek to maximize their expected utility from consumption, c_t , and leisure, l_t ,

$$E_0 \left[\sum_{t=0}^{\infty} \beta^t \left(\ln(c_t) + \chi \frac{l_t^{1-\sigma_1}}{1-\sigma_1} \right) \right],$$

subject to the following budget constraint, time constraint, and capital accumulation equation:

$$P_t(c_t + i_t) + M_t + B_t = P_t w_t n_t + P_t q_t k_t + D_t + M_{t-1} + R_{t-1} B_{t-1} + T_t, \quad (A1)$$

$$l_t + n_t + s_t = 1, \quad (A1)$$

$$k_{t+1} = i_t + (1 - \delta)k_t, \quad (A2)$$

where B_t is government bonds, P_t is the price level, i_t is investment, M_t is the nominal money stock, w_t is the real wage rate, n_t is labor, q_t is the rental rate on capital, k_t is the capital stock, D_t is the firms’ profits remitted to the households, R_t is the gross nominal interest rate, T_t is a transfer from the monetary authority, δ is the depreciation rate, and s_t represents the shopping-time costs of holding money balances

$$s_t = \zeta (P_t c_t / M_t)^\gamma. \quad (A3)$$

Utility maximization by the households yields the following first-order conditions for $c_t, l_t, n_t, M_t, B_t, i_t$, and k_t :

$$\frac{\partial u}{\partial c_t} = P_t \lambda_t + \gamma (s_t / c_t) \tau_{1,t}, \quad (A4)$$

$$\frac{\partial u}{\partial l_t} = \tau_{1,t}, \quad (\text{A5})$$

$$\tau_{1,t} = P_t w_t \lambda_t, \quad (\text{A6})$$

$$\lambda_t - \gamma(s_t / M_t) \tau_{1,t} = \beta E_t[\lambda_{t+1}], \quad (\text{A7})$$

$$\lambda_t = \beta E_t[R_t \lambda_{t+1}], \quad (\text{A8})$$

$$\lambda_t P_t = \tau_{2,t}, \quad (\text{A9})$$

$$\tau_{2,t} = \beta E_t[\tau_{2,t+1}(1 - \delta) + \lambda_{t+1} P_{t+1} q_{t+1}] \quad (\text{A10})$$

where λ_t , $\tau_{1,t}$, and $\tau_{2,t}$ are the Lagrangian multipliers of the budget constraint, time constraint, and the capital accumulation equation, respectively. By substituting (A5) into (A4), (A6), and (A7) the first order conditions for c_t , n_t and M_t become

$$\frac{\partial u}{\partial c_t} = P_t \lambda_t + \gamma(s_t / c_t) \frac{\partial u}{\partial l_t}, \quad (\text{A11})$$

$$\frac{\partial u}{\partial l_t} = P_t w_t \lambda_t, \quad (\text{A12})$$

$$\lambda_t - \gamma(s_t / M_t) \frac{\partial u}{\partial l_t} = \beta E_t[\lambda_{t+1}]. \quad (\text{A13})$$

By substituting (A9) into (A10), the first order condition for k_{t+1} becomes

$$\tau_{2,t} = \beta E_t[\tau_{2,t+1}(1 - \delta) + \tau_{2,t+1} q_{t+1}], \quad (\text{A14})$$

The marginal utilities of c_t , and l_t are

$$\frac{\partial u}{\partial c_t} = \frac{1}{c_t}, \text{ and}$$

$$\frac{\partial u}{\partial l_t} = \chi l_t^{-\sigma}.$$

As a result, the households' problem is described by equations (A1), (A2), (A3), (A8), (A11), (A12), (A13), and (A14).

The next set of equations comes from the firms. The firms are monopolistically competitive producers of output, $y_{j,t}$, according to

$$y_{j,t} = Z_t (k_{j,t})^\alpha (n_{j,t})^{1-\alpha}, \quad (\text{A15})$$

where j indicates the number of periods since the firm last adjusted its price, $n_{j,t}$ is firm labor demand, $k_{j,t}$ is firm demand for capital and Z_t is an economy wide productivity factor. This productivity factor evolves in the following manner:

$$\ln(Z_t) = \rho_Z \ln(Z_{t-1}) + (1 - \rho_Z) \ln(Z) + \varepsilon_{Z,t} \quad (\text{A16})$$

where Z is the steady state value of Z_t and $\varepsilon_{Z,t}$ is a mean zero, independently and identically distributed (i.i.d.) shock. Each period, every firm must make two decisions. First, firms determine the cost minimizing combination of $k_{j,t}$ and $n_{j,t}$ given their output level, the wage rate, and the rental rate of capital services. Second, the pricing decisions are made. In particular, the probability a firm can set a new price, P_t^* , is η and the probability a firm must charge the price that it last set j periods ago, P_{t-j}^* , is $(1 - \eta)$.

Each period, firms seek to minimize their costs

$$w_t n_{j,t} + q_t k_{j,t},$$

subject to (A15). This cost minimization implies the following two factor demand equations:

$$\psi_t \alpha Z_t [n_{j,t} / k_{j,t}]^{1-\alpha} = q_t, \quad (\text{A17})$$

$$\psi_t (1 - \alpha) Z_t [k_{j,t} / n_{j,t}]^\alpha = w_t, \quad (\text{A18})$$

where ψ_t is the Lagrangian multiplier from the production function and accordingly is interpretable as the real marginal cost of output. The market clearing conditions for capital, k_t and labor given the conditional probability of price adjustment (η) are:

$$k_t = \sum_{j=0}^{\infty} \eta (1 - \eta)^j k_{j,t} \quad \text{and} \quad n_t = \sum_{j=0}^{\infty} \eta (1 - \eta)^j n_{j,t}. \quad (\text{A19})$$

Since the real wage and user cost of capital are economy wide costs, the real marginal cost and capital services-labor ratio will be the same for all firms (i.e.

$$k_{j,t} / n_{j,t} = k_t / n_t).$$

The composition of output purchased by households is

$$y_t = \left[\sum_{j=0}^{\infty} \eta (1 - \eta)^j y_{j,t}^{(\varepsilon-1)/\varepsilon} \right]^{\varepsilon/(\varepsilon-1)}, \quad (\text{A20})$$

where

$$y_t = c_t + i_t. \quad (\text{A21})$$

Cost minimization by households yields the following product demand equation:

$$y_{j,t} = \left(P_{t-j}^* / P \right)^{-\varepsilon} y_t, \quad (\text{A22})$$

where P_t is a nonlinear price index such that

$$P_t = \left[\sum_{j=0}^{\infty} \eta(1-\eta)^j P_{t-j}^{*(1-\varepsilon)} \right]^{1/(1-\varepsilon)}. \quad (\text{A23})$$

Since the probability of price adjustment is constant, (A23) can be reduced to

$$P_t = \left[\eta P_t^{*(1-\varepsilon)} + (1-\eta) P_{t-1}^{(1-\varepsilon)} \right]^{1/(1-\varepsilon)}. \quad (\text{A24})$$

Furthermore, when (A19) is used to aggregate capital and labor over all firms, (A15) becomes:

$$\bar{y}_t = \sum_{j=0}^{\infty} \eta(1-\eta)^j y_{j,t} = Z_t(k_t)^\alpha (n_t)^{1-\alpha}. \quad (\text{A25})$$

Recall that the aggregate level of output is (A20). The relationship of y_t to \bar{y}_t is shown by substituting (A22) into (A25) to get

$$\bar{y}_t = \sum_{j=0}^{\infty} \eta(1-\eta)^j \left(P_{t-j}^* / P_t \right)^{-\varepsilon} y_t. \quad (\text{A26})$$

To eliminate the infinite number of lags of P_t^* in (A26), an auxiliary price index is defined as:

$$\bar{P}_t = \left[\eta P_t^{*- \varepsilon} + (1-\eta) \bar{P}_{t-1}^{-\varepsilon} \right]^{-1/\varepsilon}. \quad (\text{A27})$$

Given this price index, (A27) is substituted into (A26) to produce

$$\bar{y}_t = \left(\bar{P}_t / P_t \right)^{-\varepsilon} y_t. \quad (\text{A28})$$

The fraction η of firms that are able to adjust its price seek to maximize the expected value of its profits for the households

$$\sum_{j=0}^{\infty} \beta^j E_t \left[\lambda_{t+j} (1-\eta)^j [P_t^* y_{0,t+j} - P_{t+j} w_{t+j} n_{0,t+j} - P_{t+j} q_{t+j} k_{0,t+j}] \right], \quad (\text{A29})$$

subject to (A15). Using the factor demand equations, (A17) and (A18), the production function, (A15), and the firm demand equation, (A22), the firms' maximization problem, (A29), is rewritten as:

$$\sum_{j=0}^{\infty} \beta^j E_t \left[\lambda_{t+j} (1-\eta)^j (P_t^* - P_{t+j} \psi_{t+j}) (P_t^* / P_{t+j})^{-\varepsilon} y_{t+j} \right]. \quad (\text{A30})$$

Maximizing (A30) with respect to P_t^* yields

$$\sum_{j=0}^{\infty} \beta^j E_t \left[\lambda_{t+j} (1-\eta)^j (1-\varepsilon) P_{t+j}^{\varepsilon} y_{t+j} P_t^* + \beta^j \lambda_{t+j} \eta (1-\eta)^j \varepsilon P_{t+j}^{1+\varepsilon} \psi_{t+j} y_{t+j} \right] = 0.$$

Thus, the profit maximizing price is

$$P_t^* = V_{C,t} / V_{R,t}, \quad (\text{A31})$$

where

$$V_{R,t} = \sum_{j=0}^{\infty} \beta^j E_t [(1-\eta)^j (\varepsilon-1) \lambda_{t+j} P_{t+j}^{\varepsilon} y_{t+j}], \text{ and}$$

$$V_{C,t} = \sum_{j=0}^{\infty} \beta^j E_t [(1-\eta)^j \varepsilon \lambda_{t+j} P_{t+j}^{1+\varepsilon} \psi_{t+j} y_{t+j}].$$

Furthermore, the evolution of $V_{R,t}$ and $V_{C,t}$ can be written in the following manner:

$$V_{R,t} = (\varepsilon-1) \lambda_t P_t^{\varepsilon} y_t + \beta(1-\eta) E_t [V_{R,t+1}], \text{ and} \quad (\text{A32})$$

$$V_{C,t} = \varepsilon \lambda_t P_t^{1+\varepsilon} \psi_t y_t + \beta(1-\eta) E_t [V_{C,t+1}]. \quad (\text{A33})$$

Therefore, the firms' problem is summarized by (A16), (A17), (A18), (A21), (A24), (A25), (A27), (A28), (A31), (A32), and (A33).

The Steady State

These are the steady state equations for the households. To begin the steady state equations for the time constraint, (A1), the capital accumulation equation, (A2), and the shopping time costs, (A3), are

$$\begin{aligned}
n + l + s &= 1, \\
i/k &= \delta k, \text{ and} \\
s &= \xi (Pc/M)^\gamma.
\end{aligned}$$

The steady state first order conditions for the households' problem, (A8), (A11), (A12), (A13), and (A14) are

$$\begin{aligned}
\pi &= \beta R, \\
1/c &= P\lambda + \gamma (s/c) \chi l^{-\sigma_1}, \\
\chi l^{-\sigma_1} &= Pw\lambda, \\
\lambda - \gamma(s/M) \chi l^{-\sigma_1} &= \beta\lambda / \pi, \text{ and} \\
1 &= \beta[(1-\delta) + q].
\end{aligned}$$

Next are the steady state equations for the firms. The first two equations are the steady states of the factor demand equations, (A17) and (A18):

$$\begin{aligned}
\psi\alpha Z [n_j / k_j]^{1-\alpha} &= q, \text{ and} \\
\psi(1-\alpha) Z [k_j / n_j]^\alpha &= w.
\end{aligned}$$

Recall that $k_{j,t} / n_{j,t} = k_t / n_t$, so that $k_j / n_j = k / n$ in the steady state. The steady state aggregate production function, (25), is:

$$\bar{y} = Z(k)^\alpha (n)^{1-\alpha}.$$

The steady state relationship between y and \bar{y} from (A28) is:

$$\bar{y} = (\bar{P}/P)^{-\varepsilon} y,$$

where the steady state value of \bar{P} from (A25) is

$$\bar{P} = \left[\eta P^{*-\varepsilon} + (1-\eta) \pi^\varepsilon \bar{P}^{-\varepsilon} \right]^{-1/\varepsilon},$$

and where π is the steady state inflation rate. The steady state profit maximizing price from (A31) is

$$P^* = V_C / V_R,$$

where the steady state values of V_R and V_C in (A32) and (A33) are

$$V_R = (\varepsilon - 1)\lambda P^\varepsilon y + \beta(1 - \eta)\pi^{\varepsilon-1}V_R, \text{ and}$$

$$V_C = \varepsilon\lambda P^{1+\varepsilon}\psi y + \beta(1 - \eta)\pi^\varepsilon V_C.$$

Finally, the steady state identity equations for y and P from (A21) and (A24) are:

$$y = c + i, \text{ and}$$

$$P = \left[\eta P^{\varepsilon(1-\varepsilon)} + (1-\eta)(P/\pi)^{(1-\varepsilon)} \right]^{1/(1-\varepsilon)}.$$

Linearization around the steady state

This section linearizes the model around its steady state. A hat is used to signify percent deviation from the steady state. Thus, \hat{n}_t is the percent deviation of labor from its steady state.

Beginning with households, the linearized equations for the time constraint, (A1), the capital accumulation equation, (A2), and the shopping time costs, (A3), are

$$\begin{aligned} \hat{l}_t + n\hat{n}_t + s\hat{s}_t &= 0, \\ \hat{k}_{t+1} &= (i/k)\hat{i}_t + (1-\delta)\hat{k}_t, \\ \hat{P}_t + \hat{c}_t - \hat{M}_t - (1/\gamma)\hat{s}_t &= 0. \end{aligned}$$

The linearized first order conditions for the households' problem, (A8), (A11), (A12), (A13), and (A14) are

$$\begin{aligned} \hat{\lambda}_t &= \hat{R}_t + E_t[\hat{\lambda}_{t+1}], \\ -(1/c)\hat{c}_t &= P\lambda(\hat{\lambda}_t + \hat{P}_t) + \gamma(s/c)\chi l^{-\sigma_1}(\hat{s}_t - \hat{c}_t - \sigma_1\hat{l}_t), \\ \hat{\lambda}_t + \hat{P}_t + \hat{w}_t + \sigma_1\hat{l}_t &= 0, \\ \lambda\hat{\lambda}_t - \gamma(s/M)\chi l^{-\sigma_1}(\hat{s}_t - \hat{M}_t - \sigma_1\hat{l}_t) &= \lambda(\beta/\pi)E_t[\hat{\lambda}_{t+1}], \text{ and} \\ \hat{\tau}_{2,t} &= E_t[\hat{\tau}_{2,t+1} + \beta q\hat{q}_{t+1}]. \end{aligned}$$

Now on the firm side, the linearized factor demand equations for capital and labor, (A17) and (A18), are:

$$\begin{aligned}\hat{\psi}_t + \hat{Z}_t + (1-\alpha)(\hat{n}_t - \hat{k}_t) &= \hat{q}_t, \text{ and} \\ \hat{\psi}_t + \hat{Z}_t + \alpha(\hat{k}_t - \hat{n}_t) &= \hat{w}_t.\end{aligned}$$

The linearization of the definition of the index function, \bar{y}_t for y_t and its relation to y_t in (A25) and (A28), are as follows

$$\begin{aligned}\hat{y}_t &= \hat{Z}_t + \alpha\hat{k}_t + (1-\alpha)\hat{n}_t, \\ \hat{\bar{y}}_t &= \varepsilon \left[\hat{P}_t - \hat{\bar{P}}_t \right] + \hat{y}_t,\end{aligned}$$

where the linearization of (A27) is:

$$\hat{\bar{P}}_t = \eta \left[P^* / \bar{P} \right]^{(-\varepsilon)} \hat{P}_t^* + (1-\eta) \mu^\varepsilon \hat{P}_{t-1}.$$

The linearized profit maximizing price from (A31) is

$$\hat{\bar{P}}_t^* = \hat{V}_{C,t} - \hat{V}_{R,t},$$

where the linearized values of V_R and V_C in (A32) and (A33) are

$$\begin{aligned}\hat{V}_{R,t} &= \frac{(\varepsilon-1)\lambda P^\varepsilon y}{V_R} (\hat{\lambda}_t + \varepsilon \hat{P}_t + \hat{y}_t) + \beta(1-\eta)\pi^{\varepsilon-1} E_t \left[\hat{V}_{R,t+1} \right], \text{ and} \\ \hat{V}_{C,t} &= \frac{\varepsilon \lambda P^{1+\varepsilon} \psi y}{V_C} \left[\hat{\lambda}_t + (1+\varepsilon)\hat{P}_t + \hat{y}_t + \hat{\psi}_t \right] + \beta(1-\eta)\pi^\varepsilon E_t \left[\hat{V}_{C,t+1} \right].\end{aligned}$$

The linearized versions of the identity equations for aggregate output and the price level, (A21) and (A24), are:

$$\begin{aligned}\hat{y}_t &= \frac{c}{y} \hat{c}_t + \frac{i}{y} \hat{i}_t, \text{ and} \\ \hat{P}_t &= \eta (P^* / P)^{(1-\varepsilon)} \hat{P}_t^* + (1-\eta) \pi^{(\varepsilon-1)} \hat{P}_{t-1}.\end{aligned}$$

The monetary authority's policy instrument is either money or the nominal interest rate. When money is the instrument, the linearized policy rule is

$$\Delta \hat{M}_t = \hat{\mu}_t^* + (v_t - v_{t-1}), \quad (\text{A34})$$

where μ_t^* is the target money growth rate which follows an AR(1) process, $\hat{\mu}_t^* = \rho_\mu \hat{\mu}_{t-1}^* + \varepsilon_\mu$, and v_t is a transitory shock to the money growth rule which

also follows an AR(1) process, $v_t = \rho_u v_{t-1} + \varepsilon_{v_t}$. Both error terms ε_{μ_t} and ε_{v_t} are mean zero, i.i.d. shocks.

When the nominal interest rate is the instrument, the linearized policy rule is

$$\hat{R}_t = \hat{\pi}_t + \theta_\pi (\hat{\pi}_t - \hat{\pi}_t^*) + \theta_y \hat{y}_t + u_t, \quad (\text{A35})$$

where $\hat{\pi}_t = \hat{P}_t - \hat{P}_{t-1}$, $\hat{\pi}_t^*$ is the target inflation rate which follows an AR(1) process, $\hat{\pi}_t^* = \rho_\pi \hat{\pi}_{t-1}^* + \varepsilon_{\pi_t^*}$, and u_t is a shock to the interest rate rule which also follows an AR(1), $u_t = \rho_u u_{t-1} + \varepsilon_{u_t}$. Both error terms $\varepsilon_{\pi_t^*}$ and ε_{u_t} are mean zero, i.i.d. shocks.

Data Appendix

The data set contains quarterly time series for the G-7 countries on the consumer price index (CPI) and a narrow money measure, usually M1. All the series are available from 1980:Q1 through 1998:Q4. We could not get M1 for the United Kingdom, so we used a measure of currency. For this series, we excluded the 1998 data because there was a break in the series in the second quarter. All of the series are from the OECD's Main Economic Indicators database or the International Financial Statistics database. The data are not seasonally adjusted, and the quarterly figures are computed as averages of monthly data. The data was retrieved in mid-October 2004 from the Haver database, and Haver mnemonics are listed for each variable.

Canada: money supply (M1) is c156fm1n@oecdmei; CPI inflation is c156czn@oecdmei.

France: money supply (M1) is c132fm1n@oecdmei; CPI inflation is c132czn@oecdmei.

Germany: money supply (M1) is c134fm1n@oecdmei; CPI inflation is c134czn@oecdmei.

Italy: money supply (M1) is c136fm1n@oecdmei; CPI inflation is c136czn@oecdmei.

Japan: money supply (M1) is c158fm1n@oecdmei; CPI inflation is c158czn@oecdmei.

United Kingdom: money supply (currency outside of banks) is c112mlc@ifs; CPI inflation is c112czn@oecdmei.

United States: money supply (M1) is c111fm1n@oecdmei; CPI inflation is c111czn@oecdmei.