



Long Vowels 3

a e i o u
/ai/ /ee/ /igh/ /oa/ /yoo/

Contents

Page 2	Letter Names	Resources:	Alphabet Song Video Alphabet Song Song Sheet Vowel Letter Cards	website PDF b+w sheets PDF b+w sheets
Page 3	Long Vowels - rule 3	Resources:	Vowel Letter Cards Consonant Letter Cards Long Vowels: Rule 3 Cards	PDF b+w sheets PDF b+w sheets PDF b+w sheets
Page 4	Long Vowels - rule 3	Resources:	Vowel Letter Cards Consonant Letter Cards Long Vowels rule 3 cards	PDF b+w sheets PDF b+w sheets PDF b+w sheets
Page 5	Next Lesson			



LETTER NAMES

- Go to the KIDiddles website and have students watch *The Alphabet Song* video. Get students to sing the song.
- Show the vowel letter cards below:



- Ask students what letters are called. Vowels
- Hold up each of the Letter Cards and ask students:
“What is the name of the letter?”
“What is the short sound it makes?”
“What is the long sound it makes?”

Letter Names

[Alphabet Song Video](#)

[Alphabet Song Song Sheet](#)

Letter Cards

[Vowel Letter Cards](#)

LONG VOWELS: RULE 2

- First, we'll review Long Vowel Rule 2:
The final “e” is silent, making the first vowel a long vowel sound.
- In most English words, the letter **e** will be silent when it's at the end of the word, and the first vowel will be a long vowel sound.
- Show the Word Card for “late.”
- Say this word ends with a letter **e**, so it is silent.
Ask how is the first vowel pronounced? It is pronounced **/ai/** the long vowel sound. It has the same sound as its name.





LONG VOWELS: RULE 3

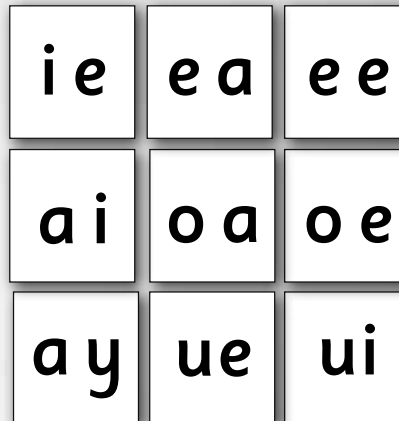
- Now, we'll learn the Long Vowel Rule 3:
When two vowels are next to each other, the second vowel is silent and the first vowel has a long vowel sound.

- Show the Word Card for "meat."
- Say that the two vowels in this word are **e** and **a**. They are next to each other, so the second vowel - **a** is silent and the first vowel - **e** has a long vowel sound.
- Say the word is pronounced **/m/ /ee/ /t/**.



LONG VOWELS: RULE 3

- There are nine common vowel combinations which follow rule 3.
- Print the Letter cards for these combinations.
- Tell the students that when these pairs of vowels are in a word, the second vowel is silent and the first vowel is a long vowel sound.
- Use the letter card for **ie** and place a consonant letter card for **t** in front of it. Say in the word **tie**, the **e** is silent and the **i** has a long vowel sound **/igh/**.



Letter Cards

[Vowel Letter Cards](#)

[Consonant Letter Cards](#)

[Long Vowels: Rule 3 Cards](#)



LONG VOWELS: RULE 3

- Here are more examples using the nine vowel pairs.

s	ea	t
---	----	---

f	ee	l
---	----	---

m	ai	l
---	----	---

ie	ea	ee
----	----	----

ai	oa	oe
----	----	----

ay	ue	ui
----	----	----

- Explain how the second vowel is silent and the first takes the long vowel sound. Ask students to make more words using the letter cards.

Letter CardsVowel Letter CardsConsonant Letter Cards

LONG VOWELS: RULE 3

- Use the Word Cards to illustrate Long Vowel Rule 3:
When two vowels are next to each other, the second vowel is silent and the first vowel has a long vowel sound.
- Use all 24 Word Cards and place them face-down in a pile. Tell the students that all the words have two vowels next to each other.
- Ask a student to take the top card.
- Ask the student what is the name of the first vowel in the word. Then ask if the vowel has a long sound or a short vowel sound.
- Finally, ask the student to read the word.

**Word Cards**Long Vowels rule 3 cards



NEXT LESSON

- In the next lesson we will be reviewing the two short vowel rules and the three long vowel rules.
- Make sure that students have mastered the sounds and names of the long vowels before proceeding to the next lesson.

Long vowels

a e i o u
/ai/ /ee/ /igh/ /oa/ /yoo/