



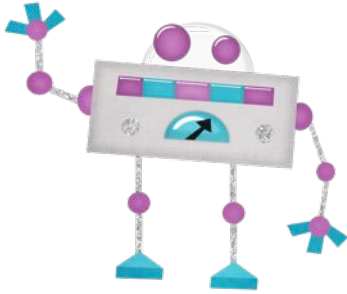
Print and laminate the playing cards.

There are 4 sets (Robot, Space Ship, Planet, and Alien) plus one set of "special cards" (Draw 2 and Wild).

To play, deal 5 cards to each player. Put the rest face down. Turn one card up. The first player must read (or spell) the card and match either the word or the character (Robot, Space Ship, Planet, or Alien). If s/he puts down a matching character (new word), s/he must also read the new word (or spell). Play continues with players matching either the words or characters. If a player does not have a match, s/he draws a card from the pile. Players can play a "Draw 2" or "Wild Card" at any time. "Draw 2" means the next person takes 2 cards instead of playing a card. A "Wild Card" lets the player select the character. Continue playing until some gets rid of all of his cards. This is the winner.



Graphic Purchased From "Just So Scrappy 2"



about

© Copyright READINGRESOURCE.NET



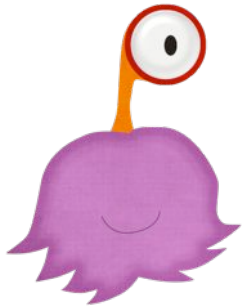
able

© Copyright READINGRESOURCE.NET



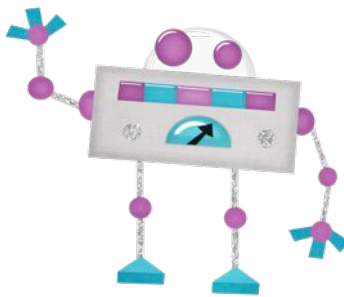
across

© Copyright READINGRESOURCE.NET



after

© Copyright READINGRESOURCE.NET



again

© Copyright READINGRESOURCE.NET



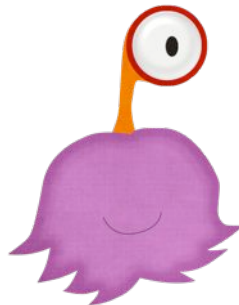
against

© Copyright READINGRESOURCE.NET



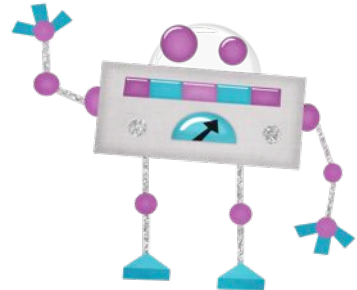
almost

© Copyright READINGRESOURCE.NET



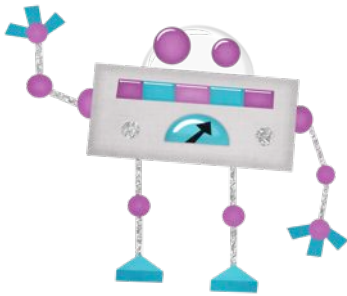
along

© Copyright READINGRESOURCE.NET



also

© Copyright READINGRESOURCE.NET



always

© Copyright READINGRESOURCE.NET



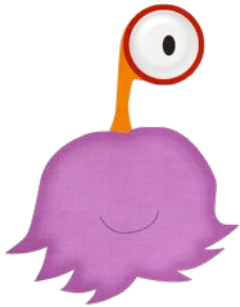
among

© Copyright READINGRESOURCE.NET



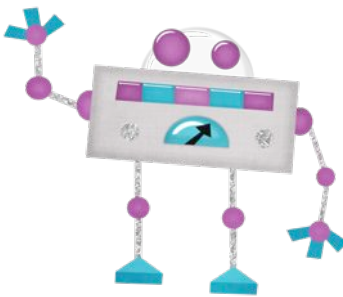
animals

© Copyright READINGRESOURCE.NET



another

© Copyright READINGRESOURCE.NET



any

© Copyright READINGRESOURCE.NET



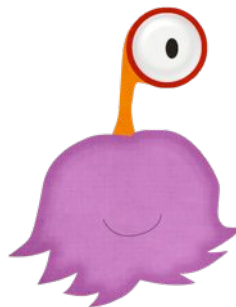
around

© Copyright READINGRESOURCE.NET



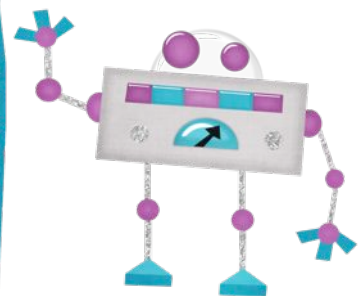
Americans

© Copyright READINGRESOURCE.NET



became

© Copyright READINGRESOURCE.NET



because

© Copyright READINGRESOURCE.NET