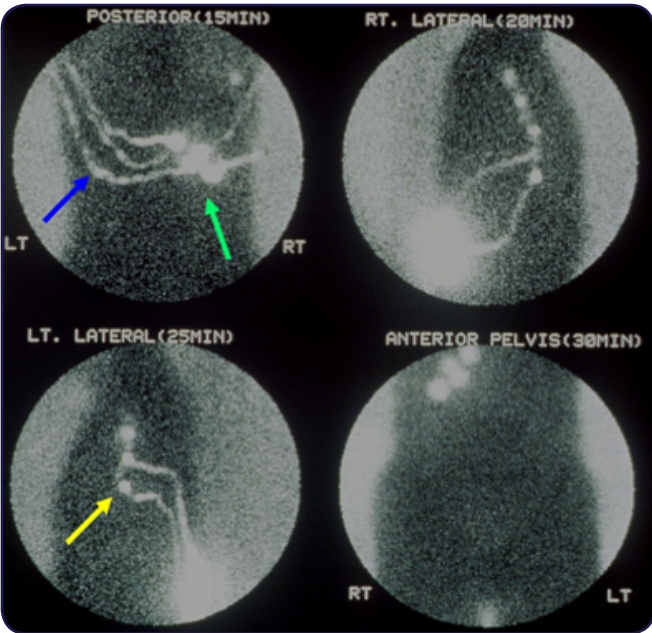


The Value & Quality of Nuclear Medicine

Lymphoscintigraphy Information for Healthcare Provider



What is Nuclear Medicine?

Nuclear medicine uses very small amounts of radioactive materials called radiopharmaceuticals to diagnose and treat disease.



For more information scan this QR code or [click here](#).

What is a Lymphoscintigraphy Exam?

Lymphoscintigraphy is a procedure that provides images of the lymphatic system, a network of small channels that circulate fluid (called lymph) and cells (lymphocytes) of the immune system throughout the body. Lymph nodes, which act like a filter for foreign bodies such as germs, viruses and pollen, are located along this network.

Lymphoscintigraphy helps identify the first line of lymph nodes (called "sentinel lymph nodes") that filter lymph fluid from the site of a cancer.



For more information, scan this QR code or [click here](#).

Lymphoscintigraphy Specific Information for the HCP

The information on this flyer and on the SNMMI website are intended to serve as a resource for health care professionals who are ordering or who need more information on lymphoscintigraphy exams.



To read the practice guideline for lymphoscintigraphy and sentinel node localization in breast cancer, scan this QR code or [click here](#).



For a video on lymphoscintigraphy, scan this QR code or [click here](#).

Advantages of a Lymphoscintigraphy Exam

- Lymphoscintigraphy is a valuable tool for mapping where cancers might spread to other parts of the body. Because cancers can travel throughout the lymphatic system in unexpected ways, lymphoscintigraphy is helpful in directing the surgeon to potentially cancerous areas that may have otherwise been overlooked.
- Images generated by the procedure allow physicians to remove only sentinel lymph nodes, sparing patients from undergoing unnecessary removal of normal uneffected lymph nodes.



To download CPT Codes for Nuclear Medicine Procedures scan this QR code or [click here](#).