



# INTERNATIONAL GEMOLOGICAL INSTITUTE

## DIAMOND REPORT

October 30, 2025  
 IGI Report Number **743525026**  
 Description **NATURAL DIAMOND**  
 Shape and Cutting Style **ROUND BRILLIANT**  
 Measurements **5.10 - 5.13 X 3.21 MM**

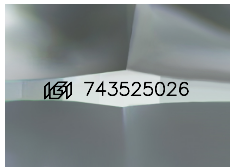
### GRADING RESULTS

Carat Weight **0.51 CARAT**  
 Color Grade **H**  
 Clarity Grade **VS 2**  
 Cut Grade **EXCELLENT**

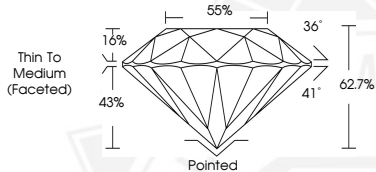
### ADDITIONAL GRADING INFORMATION

Polish **EXCELLENT**  
 Symmetry **EXCELLENT**  
 Fluorescence **NONE**  
 Identification Features **FEATHER**  
 Inscription(s) **IGI 743525026**

ELECTRONIC COPY



Sample Image Used



October 30, 2025  
 IGI Report Number **743525026**  
 ROUND BRILLIANT  
 NATURAL DIAMOND  
 5.10 - 5.13 X 3.21 MM  
 Carat Weight **0.51 CARAT**  
 Color Grade **H**  
 Clarity Grade **VS 2**  
 Cut Grade **EXCELLENT**  
 Polish **EXCELLENT**  
 Symmetry **EXCELLENT**  
 Fluorescence **NONE**  
 Inscription(s) **IGI 743525026**



October 30, 2025  
 IGI Report Number **743525026**  
 ROUND BRILLIANT  
 NATURAL DIAMOND  
 5.10 - 5.13 X 3.21 MM  
 Carat Weight **0.51 CARAT**  
 Color Grade **H**  
 Clarity Grade **VS 2**  
 Cut Grade **EXCELLENT**  
 Polish **EXCELLENT**  
 Symmetry **EXCELLENT**  
 Fluorescence **NONE**  
 Inscription(s) **IGI 743525026**



THIS DOCUMENT WAS PRODUCED WITH THE FOLLOWING SECURITY MEASURES: SPECIAL DOCUMENT PAPER, INK SCREENS, WATERMARK, BACKGROUND DESIGNS, HOLOGRAM AND OTHER SECURITY FEATURES NOT LISTED AND DO EXCEED DOCUMENT SECURITY INDUSTRY GUIDELINES.

For terms & conditions and to verify this report, please visit [www.igi.org](http://www.igi.org)