



ELECTRONIC COPY

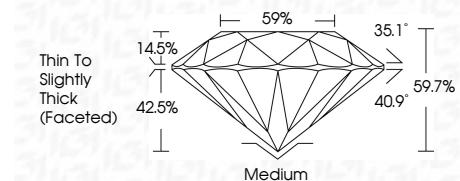
744508495
Report verification at igi.org



January 5, 2026
IGI Report Number **744508495**
Description **NATURAL DIAMOND**
Shape and Cutting Style **ROUND BRILLIANT**
Measurements **6.62 - 6.68 X 3.97 MM**

GRADING RESULTS

Carat Weight **1.09 CARAT**
Color Grade **J**
Clarity Grade **SI 1**
Cut Grade **VERY GOOD**



ADDITIONAL GRADING INFORMATION

Polish **VERY GOOD**
Symmetry **GOOD**
Fluorescence **VERY SLIGHT**
Inscription(s) **(IGI) 744508495**



January 5, 2026
IGI Report No 744508495
ROUND BRILLIANT
6.62 - 6.68 X 3.97 MM
1.09 CARAT J
Color Grade **VERY GOOD**
SI 1
Depth 69.7%
Table 59%
Girdle Thin To Slightly Thick (Faceted)
Medium
Culet **VERY GOOD**
Polish **GOOD**
Symmetry **VERY SLIGHT**
Fluorescence **VERY SLIGHT**
Inscriptions(s) (IGI) 744508495

DIAMOND REPORT

January 5, 2026
IGI Report Number **744508495**
Description **NATURAL DIAMOND**
Shape and Cutting Style **ROUND BRILLIANT**
Measurements **6.62 - 6.68 X 3.97 MM**

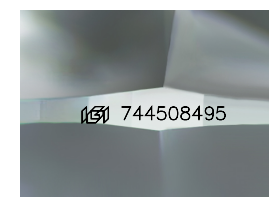
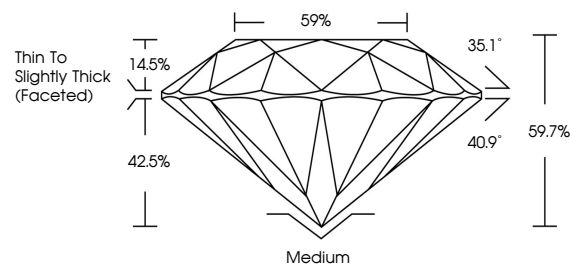
GRADING RESULTS

Carat Weight **1.09 CARAT**
Color Grade **J**
Clarity Grade **SI 1**
Cut Grade **VERY GOOD**

ADDITIONAL GRADING INFORMATION

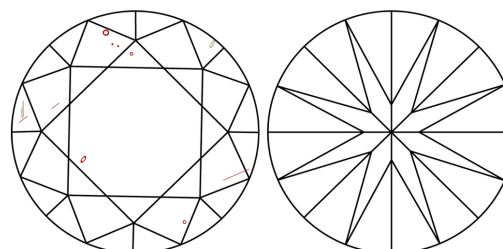
Polish **VERY GOOD**
Symmetry **GOOD**
Fluorescence **VERY SLIGHT**
Inscription(s) **(IGI) 744508495**

PROPORTIONS



Sample Image Used

CLARITY CHARACTERISTICS



KEY TO SYMBOLS

Red symbols indicate internal characteristics.
Green symbols indicate external characteristics.

COLOR

D - F	G - J	K - M	N - R	S - Z	FANCY
Colorless	Near Colorless	Slightly Tinted	Very Light Color	Light Color	

CLARITY

FL	IF	VVS ¹⁻²	VS ¹⁻²	SI ¹⁻²	I ¹⁻³
Flawless	Internally Flawless	Very Very Slightly Included	Very Slightly Included	Slightly Included	Included

