



# INTERNATIONAL GEMOLOGICAL INSTITUTE

## DIAMOND REPORT

January 19, 2026  
IGI Report Number  
Description  
Shape and Cutting Style  
Measurements

**763623883**  
**NATURAL DIAMOND**  
**ROUND BRILLIANT**  
**4.68 - 4.72 X 2.93 MM**

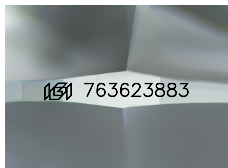
## GRADING RESULTS

Carat Weight **0.40 CARAT**  
Color Grade **H**  
Clarity Grade **VS 2**  
Cut Grade **EXCELLENT**

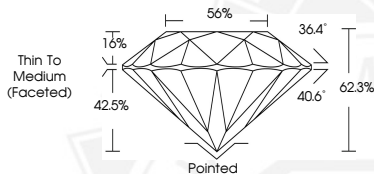
## ADDITIONAL GRADING INFORMATION

Polish **EXCELLENT**  
Symmetry **EXCELLENT**  
Fluorescence **VERY SLIGHT**  
Identification Features **CRYSTAL, CLOUD, NEEDLE**  
Inscription(s) **(IGI) 763623883**

ELECTRONIC COPY



Sample Image Used



January 19, 2026  
IGI Report Number **763623883**  
**ROUND BRILLIANT**  
**NATURAL DIAMOND**  
**4.68 - 4.72 X 2.93 MM**  
Carat Weight **0.40 CARAT**  
Color Grade **H**  
Clarity Grade **VS 2**  
Cut Grade **EXCELLENT**  
Polish **EXCELLENT**  
Symmetry **EXCELLENT**  
Fluorescence **VERY SLIGHT**  
Inscription(s) **(IGI) 763623883**



January 19, 2026  
IGI Report Number **763623883**  
**ROUND BRILLIANT**  
**NATURAL DIAMOND**  
**4.68 - 4.72 X 2.93 MM**  
Carat Weight **0.40 CARAT**  
Color Grade **H**  
Clarity Grade **VS 2**  
Cut Grade **EXCELLENT**  
Polish **EXCELLENT**  
Symmetry **EXCELLENT**  
Fluorescence **VERY SLIGHT**  
Inscription(s) **(IGI) 763623883**



THIS DOCUMENT WAS PRODUCED WITH THE FOLLOWING SECURITY MEASURES: SPECIAL DOCUMENT PAPER, INK SCREENS, WATERMARK, BACKGROUND DESIGNS, HOLOGRAM AND OTHER SECURITY FEATURES NOT LISTED AND DO EXCEED DOCUMENT SECURITY INDUSTRY GUIDELINES.

For terms & conditions and to verify this report, please visit [www.igi.org](http://www.igi.org)