



INTERNATIONAL GEMOLOGICAL INSTITUTE

ELECTRONIC COPY

DIAMOND REPORT

August 4, 2025

IGI Report Number

712520031

Description

NATURAL DIAMOND

Shape and Cutting Style

ROUND BRILLIANT

Measurements

4.71 - 4.74 X 2.96 MM

GRADING RESULTS

Carat Weight

0.41 CARAT

Color Grade

D

Clarity Grade

SI 1

Cut Grade

EXCELLENT

ADDITIONAL GRADING INFORMATION

Polish

EXCELLENT

Symmetry

EXCELLENT

Fluorescence

VERY SLIGHT

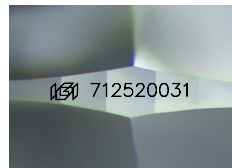
Identification Features

CRYSTAL

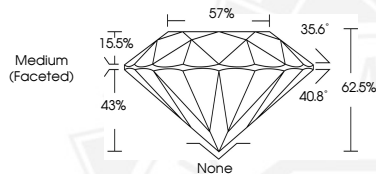
Inscription(s)

IGI 712520031

Comments: IDEAL CUT ROUND BRILLIANT



Sample Image Used



August 4, 2025

IGI Report Number 712520031

ROUND BRILLIANT

NATURAL DIAMOND

4.71 - 4.74 X 2.96 MM

Carat Weight 0.41 CARAT

Color Grade D

Clarity Grade SI 1

Cut Grade EXCELLENT

Polish EXCELLENT

Symmetry EXCELLENT

Fluorescence VERY SLIGHT

Inscription(s) IGI 712520031

Comments: IDEAL CUT ROUND

BRILLIANT



August 4, 2025

IGI Report Number 712520031

ROUND BRILLIANT

NATURAL DIAMOND

4.71 - 4.74 X 2.96 MM

Carat Weight 0.41 CARAT

Color Grade D

Clarity Grade SI 1

Cut Grade EXCELLENT

Polish EXCELLENT

Symmetry EXCELLENT

Fluorescence VERY SLIGHT

Inscription(s) IGI 712520031

Comments: IDEAL CUT ROUND

BRILLIANT



THIS DOCUMENT WAS PRODUCED WITH THE FOLLOWING SECURITY MEASURES: SPECIAL DOCUMENT PAPER, INK SCREENS, WATERMARK, BACKGROUND DESIGNS, HOLOGRAM AND OTHER SECURITY FEATURES NOT LISTED AND DO EXCEED DOCUMENT SECURITY INDUSTRY GUIDELINES.

For terms & conditions and to verify this report, please visit www.igi.org