



ELECTRONIC COPY

DIAMOND REPORT

June 5, 2025	
IGI Report Number	712529686
Description	NATURAL DIAMOND
Shape and Cutting Style	ROUND BRILLIANT
Measurements	7.50 - 7.56 X 4.80 MM

GRADING RESULTS

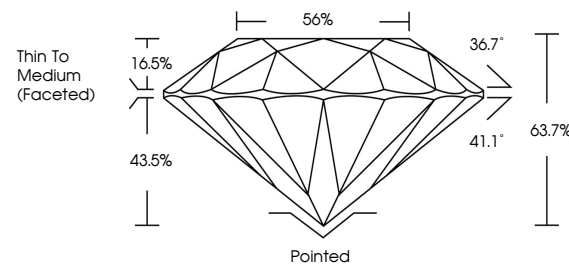
Carat Weight	1.70 CARAT
Color Grade	G
Clarity Grade	VS 1
Cut Grade	EXCELLENT

ADDITIONAL GRADING INFORMATION

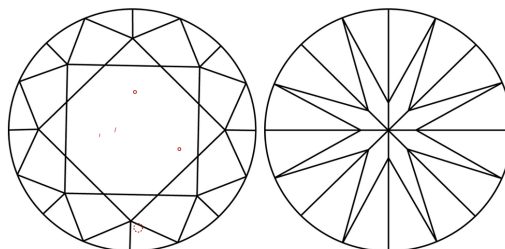
Polish	EXCELLENT
Symmetry	EXCELLENT
Fluorescence	NONE
Inscription(s)	131 712529686

712529686
Report verification at igi.org

PROPORTIONS

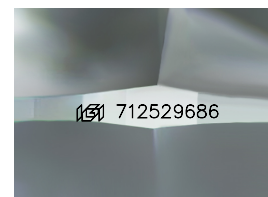


CLARITY CHARACTERISTICS



KEY TO SYMBOLS

Red symbols indicate internal characteristics.
Green symbols indicate external characteristics.



Sample Image Used

COLOR

D - F	G - J	K - M	N - R	S - Z	FANCY
Colorless	Near Colorless	Slightly Tinted	Very Light Color	Light Color	

CLARITY

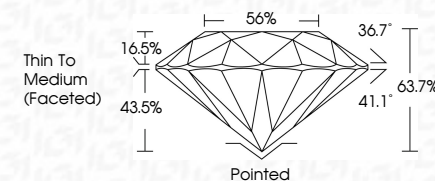
IF	VS ¹⁻²	VS ¹⁻²	SI ¹⁻²	I ¹⁻³
Internally Flawless	Very Very Slightly Included	Very Slightly Included	Slightly Included	Included



June 5, 2025	
IGI Report Number	712529686
Description	NATURAL DIAMOND
Shape and Cutting Style	ROUND BRILLIANT
Measurements	7.50 - 7.56 X 4.80 MM

GRADING RESULTS

Carat Weight	1.70 CARAT
Color Grade	G
Clarity Grade	VS 1
Cut Grade	EXCELLENT



ADDITIONAL GRADING INFORMATION

Polish	EXCELLENT
Symmetry	EXCELLENT
Fluorescence	NONE
Inscription(s)	(15) 712529686



IG



© IGI 2020, International Gemological Institute

FD - 10 20

www.igi.org



THIS DOCUMENT WAS PRODUCED WITH THE FOLLOWING SECURITY MEASURES: SPECIAL DOCUMENT PAPER, INK SCREENS, WATERMARK, BACKGROUND DESIGNS, HOLOGRAM AND OTHER SECURITY FEATURES NOT LISTED AND DO EXCEED DOCUMENT SECURITY INDUSTRY GUIDELINE

June 5, 2025
GI Report No 712529686
POIND BRILLANT

Report No. 71292666	
ROUND BRILLIANT	
1.90 - 7.50 x 4.50 MM	
Carat Weight	1.70 CARAT
Color Grade	G
Clarity Grade	VS 1
Cut Grade	EXCELLENT
Depth	63.7%
Table	65%
Grain	Thin to Medium (Faceted)
Color	Pointed
Polish	EXCELLENT
Symmetry	EXCELLENT
Fluorescence	NONE
	Report No. 71292666