



# INTERNATIONAL GEMOLOGICAL INSTITUTE

## DIAMOND REPORT

May 6, 2025  
IGI Report Number **700518955**  
Description **NATURAL DIAMOND**  
Shape and Cutting Style **PRINCESS CUT**  
Measurements **4.85 X 4.71 X 3.46 MM**

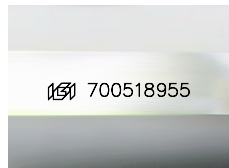
### GRADING RESULTS

Carat Weight **0.70 CARAT**  
Color Grade **H**  
Clarity Grade **INTERNALLY FLAWLESS**  
Cut Grade **EXCELLENT**

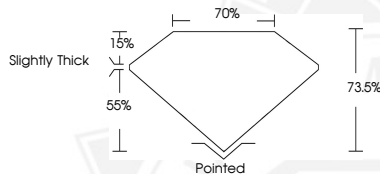
### ADDITIONAL GRADING INFORMATION

Polish **EXCELLENT**  
Symmetry **EXCELLENT**  
Fluorescence **NONE**  
Inscription(s) **IGI 700518955**

ELECTRONIC COPY



Sample Image Used



May 6, 2025

IGI Report Number **700518955**

**PRINCESS CUT**  
**NATURAL DIAMOND**  
**4.85 X 4.71 X 3.46 MM**

Carat Weight **0.70 CARAT**  
Color Grade **H**  
Clarity Grade **I.F.**  
Cut Grade **EXCELLENT**  
Polish **EXCELLENT**  
Symmetry **EXCELLENT**  
Fluorescence **NONE**  
Inscription(s) **IGI 700518955**



May 6, 2025

IGI Report Number **700518955**

**PRINCESS CUT**  
**NATURAL DIAMOND**  
**4.85 X 4.71 X 3.46 MM**

Carat Weight **0.70 CARAT**  
Color Grade **H**  
Clarity Grade **I.F.**  
Cut Grade **EXCELLENT**  
Polish **EXCELLENT**  
Symmetry **EXCELLENT**  
Fluorescence **NONE**  
Inscription(s) **IGI 700518955**



THIS DOCUMENT WAS PRODUCED WITH THE FOLLOWING SECURITY MEASURES: SPECIAL DOCUMENT PAPER, INK SCREENS, WATERMARK, BACKGROUND DESIGN, HOLOGRAM AND OTHER SECURITY FEATURES NOT LISTED AND DO EXCEED DOCUMENT SECURITY INDUSTRY GUIDELINES.

For terms & conditions and to verify this report, please visit [www.igi.org](http://www.igi.org)