



# INTERNATIONAL GEMOLOGICAL INSTITUTE

ELECTRONIC COPY



April 15, 2025

IGI Report Number 694591938

ROUND BRILLIANT

NATURAL DIAMOND

4.94 - 4.98 X 3.12 MM

Carat Weight 0.47 CARAT

Color Grade K

Clarity Grade VS 1

Cut Grade EXCELLENT

Polish EXCELLENT

Symmetry EXCELLENT

Fluorescence NONE

Inscription(s) (IGI) 694591938

## DIAMOND REPORT

April 15, 2025

IGI Report Number

694591938

Description

NATURAL DIAMOND

Shape and Cutting Style

ROUND BRILLIANT

Measurements

4.94 - 4.98 X 3.12 MM

## GRADING RESULTS

Carat Weight

0.47 CARAT

Color Grade

K

Clarity Grade

VS 1

Cut Grade

EXCELLENT

## ADDITIONAL GRADING INFORMATION

Polish

EXCELLENT

Symmetry

EXCELLENT

Fluorescence

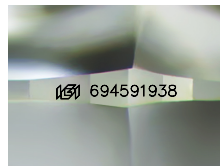
NONE

Identification Features

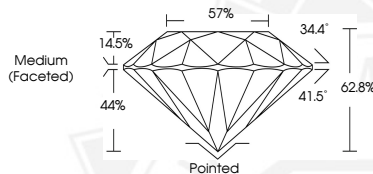
CRYSTAL CLOUD

Inscription(s)

(IGI) 694591938



Sample Image Used



April 15, 2025

IGI Report Number 694591938

ROUND BRILLIANT

NATURAL DIAMOND

4.94 - 4.98 X 3.12 MM

Carat Weight 0.47 CARAT

Color Grade K

Clarity Grade VS 1

Cut Grade EXCELLENT

Polish EXCELLENT

Symmetry EXCELLENT

Fluorescence NONE

Inscription(s) (IGI) 694591938



THIS DOCUMENT WAS PRODUCED WITH THE FOLLOWING SECURITY MEASURES: SPECIAL DOCUMENT PAPER, INK SCREENS, WATERMARK, BACKGROUND DESIGN, HOLOGRAM AND OTHER SECURITY FEATURES NOT LISTED AND DO EXCEED DOCUMENT SECURITY INDUSTRY GUIDELINES.

For terms & conditions and to verify this report, please visit [www.igi.org](http://www.igi.org)