



# INTERNATIONAL GEMOLOGICAL INSTITUTE

## DIAMOND REPORT

December 4, 2025

IGI Report Number 719548155

Description

NATURAL DIAMOND

Shape and Cutting Style

ROUND BRILLIANT

Measurements

5.70 - 5.76 X 3.55 MM

### GRADING RESULTS

Carat Weight

0.72 CARAT

Color Grade

E

Clarity Grade

VVS 1

Cut Grade

EXCELLENT

### ADDITIONAL GRADING INFORMATION

Polish

EXCELLENT

Symmetry

EXCELLENT

Fluorescence

NONE

Identification Features

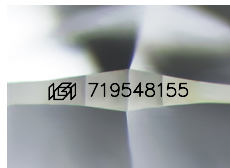
CLOUD

Inscription(s)

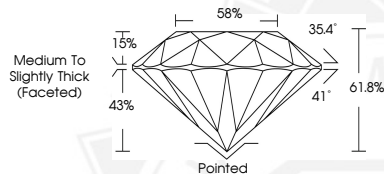
IGI 719548155

Comments: IDEAL CUT ROUND BRILLIANT

ELECTRONIC COPY



Sample Image Used



THIS DOCUMENT WAS PRODUCED WITH THE FOLLOWING SECURITY MEASURES: SPECIAL DOCUMENT PAPER, INK SCREENS, WATERMARK, BACKGROUND DESIGNS, HOLOGRAM AND OTHER SECURITY FEATURES NOT LISTED AND DO EXCEED DOCUMENT SECURITY INDUSTRY GUIDELINES.

For terms & conditions and to verify this report, please visit [www.igi.org](http://www.igi.org)



December 4, 2025

IGI Report Number 719548155

ROUND BRILLIANT

NATURAL DIAMOND

5.70 - 5.76 X 3.55 MM

Carat Weight

0.72 CARAT

Color Grade

E

Clarity Grade

VVS 1

Cut Grade

EXCELLENT

Polish

EXCELLENT

Symmetry

EXCELLENT

Fluorescence

NONE

Inscription(s)

IGI 719548155

Comments: IDEAL CUT ROUND

BRILLIANT



December 4, 2025

IGI Report Number 719548155

ROUND BRILLIANT

NATURAL DIAMOND

5.70 - 5.76 X 3.55 MM

Carat Weight

0.72 CARAT

Color Grade

E

Clarity Grade

VVS 1

Cut Grade

EXCELLENT

Polish

EXCELLENT

Symmetry

EXCELLENT

Fluorescence

NONE

Inscription(s)

IGI 719548155

Comments: IDEAL CUT ROUND

BRILLIANT