



**ELECTRONIC COPY**

## DIAMOND REPORT

December 3, 2025	
IGI Report Number	751515292
Description	NATURAL DIAMOND
Shape and Cutting Style	PRINCESS CUT
Measurements	7.88 X 7.75 X 5.59 MM

## GRADING RESULTS

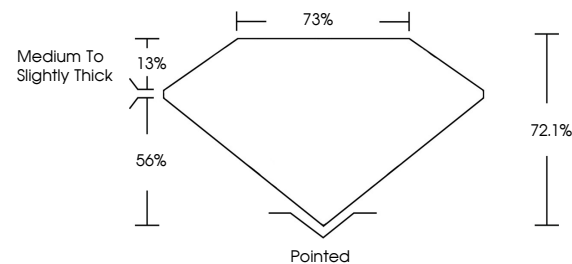
Carat Weight	3.00 CARATS
Color Grade	I
Clarity Grade	VS 1
Cut Grade	EXCELLENT

### ADDITIONAL GRADING INFORMATION

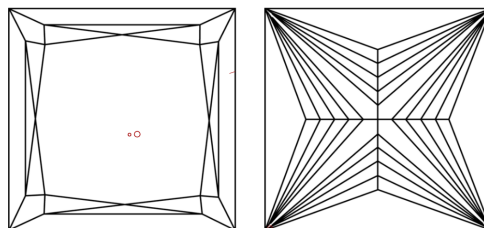
Polish	EXCELLENT
Symmetry	EXCELLENT
Fluorescence	VERY SLIGHT
Inscription(s)	151 751515292

751515292  
Report verification at [igi.org](http://igi.org)

## PROPORTIONS

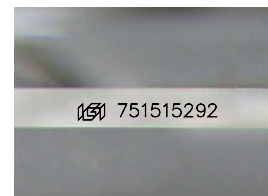


## CLARITY CHARACTERISTICS



## KEY TO SYMBOLS

Red symbols indicate internal characteristics.  
Green symbols indicate external characteristics.



Sample Image Used

**COLOR**

D - F	G - J	K - M	N - R	S - Z	FANCY
Colorless	Near Colorless	Slightly Tinted	Very Light Color	Light Color	

## CLARITY

FL	IF	VVS <sup>1-2</sup>	VS <sup>1-2</sup>	SI <sup>1-2</sup>	I <sup>1-3</sup>
Flawless	Internally Flawless	Very Very Slightly Included	Very Slightly Included	Slightly Included	Included

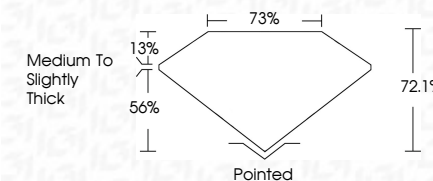
## DIAMOND REPORT



December 3, 2025	
IGI Report Number	751515292
Description	NATURAL DIAMOND
Shape and Cutting Style	PRINCESS CUT
Measurements	7.88 X 7.75 X 5.59 MM

## GRADING RESULTS

Carat Weight	3.00 CARATS
Color Grade	I
Clarity Grade	VS 1
Cut Grade	EXCELLENT



### ADDITIONAL GRADING INFORMATION

Polish	EXCELLENT
Symmetry	EXCELLENT
Fluorescence	VERY SLIGHT
Inscription(s)	(15) 751515292



IG



© IGI 2020, International Gemological Institute

FD - 10 20



THIS DOCUMENT WAS PRODUCED WITH THE FOLLOWING SECURITY MEASURES: SPECIAL DOCUMENT PAPER, INK SCREENS, WATERMARK, BACKGROUND DESIGNS, HOLOGRAM AND OTHER SECURITY FEATURES NOT LISTED AND DO EXCEED DOCUMENT SECURITY INDUSTRY GUIDELINES

**www.igi.org**

December 3, 2025  
IGI Report No 751515  
PRINCESS CLIT

7.88 X 7.75 X 6.59 MM		3.00 CARATS
Carat Weight		
Color Grade		I
Clarity Grade		VS 1
Cut Grade		EXCELLENT
Depth		72.1%
Table		73%
Girdle		Medium To Slightly Thick
Culet		Pointed
Polish		EXCELLENT
Symmetry		EXCELLENT
Fluorescence		VERY SLIGHT