



INTERNATIONAL GEMOLOGICAL INSTITUTE

DIAMOND REPORT

October 6, 2025

IGI Report Number

734510354

Description

NATURAL DIAMOND

Shape and Cutting Style

ROUND BRILLIANT

Measurements

4.70 - 4.74 X 2.96 MM

GRADING RESULTS

Carat Weight

0.40 CARAT

Color Grade

D

Clarity Grade

SI 1

Cut Grade

EXCELLENT

ADDITIONAL GRADING INFORMATION

Polish

EXCELLENT

Symmetry

EXCELLENT

Fluorescence

VERY SLIGHT

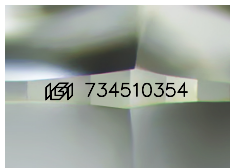
Identification Features

INDENTED NATURAL, FEATHER, CRYSTAL,
CLOUD

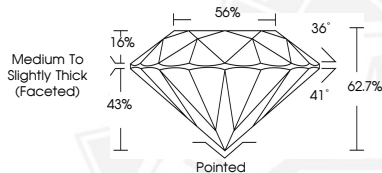
Inscription(s)

IGI 734510354

ELECTRONIC COPY



Sample Image Used



October 6, 2025

IGI Report Number 734510354

ROUND BRILLIANT

NATURAL DIAMOND

4.70 - 4.74 X 2.96 MM

Carat Weight

0.40 CARAT

Color Grade

D

Clarity Grade

SI 1

Cut Grade

EXCELLENT

Polish

EXCELLENT

Symmetry

EXCELLENT

Fluorescence

VERY SLIGHT

Inscription(s)

IGI 734510354



October 6, 2025

IGI Report Number 734510354

ROUND BRILLIANT

NATURAL DIAMOND

4.70 - 4.74 X 2.96 MM

Carat Weight

0.40 CARAT

Color Grade

D

Clarity Grade

SI 1

Cut Grade

EXCELLENT

Polish

EXCELLENT

Symmetry

EXCELLENT

Fluorescence

VERY SLIGHT

Inscription(s)

IGI 734510354



THIS DOCUMENT WAS PRODUCED WITH THE FOLLOWING SECURITY MEASURES: SPECIAL DOCUMENT PAPER, INK SCREENS, WATERMARK, BACKGROUND DESIGNS, HOLOGRAM AND OTHER SECURITY FEATURES NOT LISTED AND DO EXCEED DOCUMENT SECURITY INDUSTRY GUIDELINES.

For terms & conditions and to verify this report, please visit www.igi.org