



INTERNATIONAL GEMOLOGICAL INSTITUTE

DIAMOND REPORT

ELECTRONIC COPY

December 20, 2023
IGI Report Number 612308958
Description NATURAL DIAMOND
Shape and Cutting Style ROUND BRILLIANT
Measurements 5.37 - 5.41 x 3.31 mm

GRADING RESULTS

Carat Weight 0.59 CARAT
Color Grade H
Clarity Grade VS 2
Cut Grade EXCELLENT

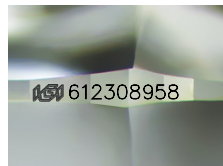
ADDITIONAL GRADING INFORMATION

Polish EXCELLENT
Symmetry EXCELLENT
Fluorescence NONE

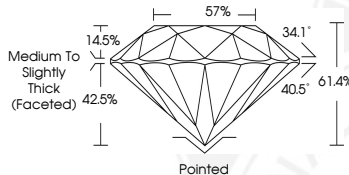
Identification Features FEATHER, CRYSTAL, CLOUD
Inscription(s) IGI 612308958
Comments: IDEAL CUT ROUND BRILLIANT



612308958



Sample Image Used



COLOR

D - F	G - J	K - M	N - R	S - Z	FANCY
Colorless	Near Colorless	Slightly Tinted	Very Light Color	Light Color	

CLARITY

IF	VS ¹⁻²	VS ¹⁻²	SI ¹⁻²	I ¹⁻²
Internally Flawless	Very Very Slightly Included	Very Slightly Included	Slightly Included	Included

© IGI 2020, International Gemological Institute

FD - 10 20



December 20, 2023
IGI Report Number 612308958
NATURAL DIAMOND
ROUND BRILLIANT
5.37 - 5.41 x 3.31 mm
Carat Weight 0.59 CARAT
Color Grade H
Clarity Grade VS 2
Cut Grade EXCELLENT
Polish EXCELLENT
Symmetry EXCELLENT
Fluorescence NONE
Inscription(s) IGI 612308958
Comments: IDEAL CUT ROUND BRILLIANT



December 20, 2023
IGI Report Number 612308958
NATURAL DIAMOND
ROUND BRILLIANT
5.37 - 5.41 x 3.31 mm
Carat Weight 0.59 CARAT
Color Grade H
Clarity Grade VS 2
Cut Grade EXCELLENT
Polish EXCELLENT
Symmetry EXCELLENT
Fluorescence NONE
Inscription(s) IGI 612308958
Comments: IDEAL CUT ROUND BRILLIANT



THIS DOCUMENT WAS PRODUCED WITH THE FOLLOWING SECURITY MEASURES: SPECIAL DOCUMENT PAPER, INK SCREENS, WATERMARK, BACKGROUND DESIGN, HOLOGRAM AND OTHER SECURITY FEATURES NOT LISTED AND DO EXCEED DOCUMENT SECURITY INDUSTRY GUIDELINES.