

510179719

January 28, 2022

IGI Report Number510179719

DescriptionNATURAL DIAMOND

Shape and Cutting StyleEMERALD CUT

Measurements8.37 x 5.63 x 3.58 mm

GRADING RESULTS

Carat Weight1.70 CARAT

Color GradeK

Clarity GradeVS 2

ADDITIONAL GRADING INFORMATION

Polish - SymmetryEXCELLENT

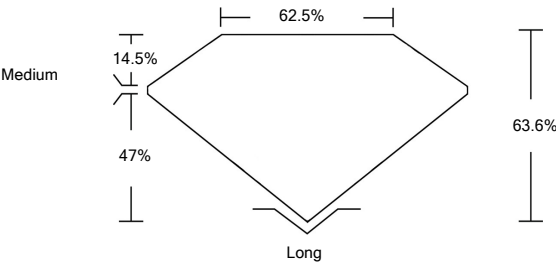
ProportionsEXCELLENT

FluorescenceNONE

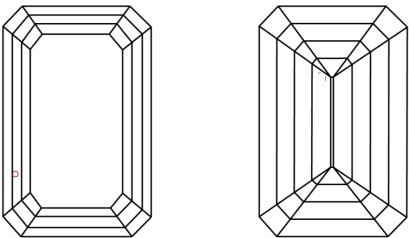
Inscription(s)IGI 510179719



PROPORTIONS

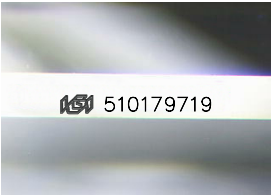


CLARITY CHARACTERISTICS



KEY TO SYMBOLS

Red symbols indicate internal characteristics.
Green symbols indicate external characteristics.



Sample Image Used

COLOR

| D - F | G - J | K - M | N - R | S - Z | FANCY |
|-----------|----------------|-----------------|------------------|-------------|-------|
| Colorless | Near Colorless | Slightly Tinted | Very Light Color | Light Color | |

CLARITY

| IF | VS ¹⁻² | VS ¹⁻² | SI ¹⁻² | I ¹⁻³ |
|---------------------|-----------------------------|------------------------|-------------------|------------------|
| Internally Flawless | Very Very Slightly Included | Very Slightly Included | Slightly Included | Included |

DIAMOND REPORT



January 28, 2022

IGI Report Number510179719

DescriptionNATURAL DIAMOND

Shape and Cutting StyleEMERALD CUT

Measurements8.37 x 5.63 x 3.58 mm

GRADING RESULTS

Carat Weight1.70 CARAT

Color GradeK

Clarity GradeVS 2

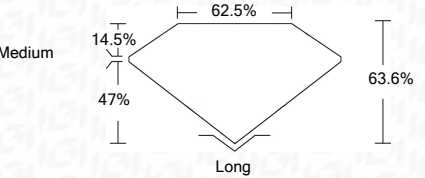
ADDITIONAL GRADING INFORMATION

Polish - SymmetryEXCELLENT

ProportionsEXCELLENT

FluorescenceNONE

Inscription(s)IGI 510179719



IGI

| | | | | | | | | | | | | |
|------------------|-------------------------|-----------------------|--------------|-------------|---------------|-------|--------|--------|-----------|-----------|-------------|---------------|
| January 28, 2022 | IGI Report No 510179719 | 1.70 CARAT | K | VS2 | 63.6% | 62.5% | Medium | Long | EXCELLENT | EXCELLENT | NONE | IGI 510179719 |
| NATURAL DIAMOND | EMERALD CUT | 8.37 x 5.63 x 3.58 mm | Carat Weight | Color Grade | Clarity Grade | Depth | Table | Girdle | Culet | Pol - Sym | Proportions | Fluorescence |