



**ELECTRONIC COPY**

649487214  
Report verification at [igi.org](http://igi.org)



September 18, 2024

IGI Report Number **649487214**

Description **NATURAL DIAMOND**

Shape and Cutting Style **ROUND BRILLIANT**

Measurements **7.53 - 7.59 X 4.66 MM**

**GRADING RESULTS**

Carat Weight **1.64 CARAT**

Color Grade **J**

Clarity Grade **VS 1**

Cut Grade **EXCELLENT**

**DIAMOND REPORT**

September 18, 2024

IGI Report Number **649487214**

Description **NATURAL DIAMOND**

Shape and Cutting Style **ROUND BRILLIANT**

Measurements **7.53 - 7.59 X 4.66 MM**

**GRADING RESULTS**

Carat Weight **1.64 CARAT**

Color Grade **J**

Clarity Grade **VS 1**

Cut Grade **EXCELLENT**

**ADDITIONAL GRADING INFORMATION**

Polish **EXCELLENT**

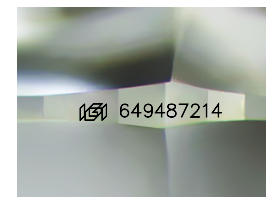
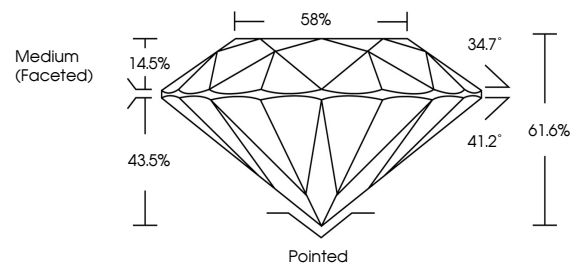
Symmetry **EXCELLENT**

Fluorescence **NONE**

Inscription(s) **649487214**

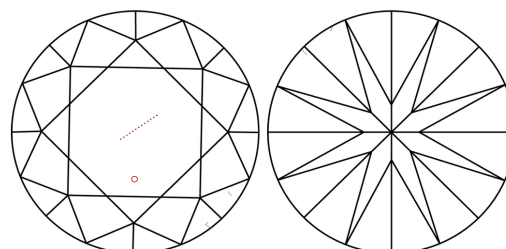
Comments: IDEAL CUT ROUND BRILLIANT

**PROPORTIONS**



Sample Image Used

**CLARITY CHARACTERISTICS**



**KEY TO SYMBOLS**

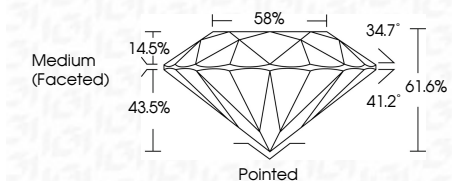
Red symbols indicate internal characteristics.  
Green symbols indicate external characteristics.

**COLOR**

D - F	G - J	K - M	N - R	S - Z	FANCY
Colorless	Near Colorless	Slightly Tinted	Very Light Color	Light Color	

**CLARITY**

IF	VS <sup>1-2</sup>	VS <sup>1-2</sup>	SI <sup>1-2</sup>	I <sup>1-3</sup>
Internally Flawless	Very Very Slightly Included	Very Slightly Included	Slightly Included	Included



**ADDITIONAL GRADING INFORMATION**

Polish **EXCELLENT**

Symmetry **EXCELLENT**

Fluorescence **NONE**

Inscription(s) **649487214**

Comments: IDEAL CUT ROUND BRILLIANT



**IGI**

September 18, 2024  
IGI Report No. 649487214  
**ROUND BRILLIANT**

**7.53 - 7.59 X 4.66 MM**

**1.64 CARAT**

**J**

**VS 1**

**EXCELLENT**

**61.6%**

**58%**

**Medium (Faceted)**

**Pointed**

**EXCELLENT**

**EXCELLENT**

**NONE**

**IGI 649487214**

**Comments: IDEAL CUT ROUND BRILLIANT**

