



**ELECTRONIC COPY**

649487211  
Report verification at [igi.org](http://igi.org)



September 16, 2024  
IGI Report Number **649487211**  
Description **NATURAL DIAMOND**  
Shape and Cutting Style **ROUND BRILLIANT**  
Measurements **7.56 - 7.59 X 4.60 MM**

**GRADING RESULTS**

Carat Weight **1.62 CARAT**  
Color Grade **J**  
Clarity Grade **VS 2**  
Cut Grade **EXCELLENT**

**DIAMOND REPORT**

September 16, 2024  
IGI Report Number **649487211**  
Description **NATURAL DIAMOND**  
Shape and Cutting Style **ROUND BRILLIANT**  
Measurements **7.56 - 7.59 X 4.60 MM**

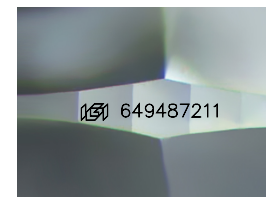
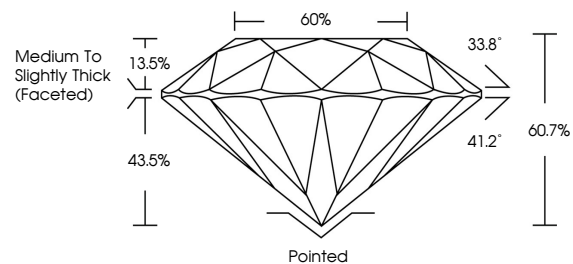
**GRADING RESULTS**

Carat Weight **1.62 CARAT**  
Color Grade **J**  
Clarity Grade **VS 2**  
Cut Grade **EXCELLENT**

**ADDITIONAL GRADING INFORMATION**

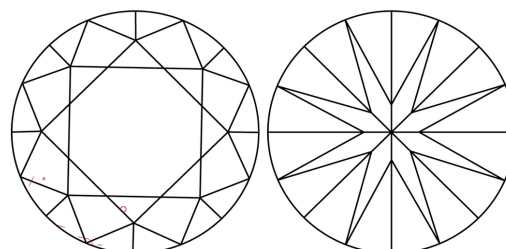
Polish **EXCELLENT**  
Symmetry **EXCELLENT**  
Fluorescence **NONE**  
Inscription(s) **649487211**  
Comments: IDEAL CUT ROUND BRILLIANT

**PROPORTIONS**



Sample Image Used

**CLARITY CHARACTERISTICS**



**KEY TO SYMBOLS**

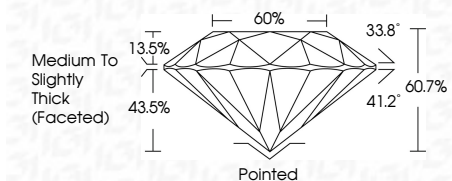
Red symbols indicate internal characteristics.  
Green symbols indicate external characteristics.

**COLOR**

D - F	G - J	K - M	N - R	S - Z	FANCY
Colorless	Near Colorless	Slightly Tinted	Very Light Color	Light Color	

**CLARITY**

IF	VS <sup>1-2</sup>	VS <sup>1-2</sup>	SI <sup>1-2</sup>	I <sup>1-3</sup>
Internally Flawless	Very Very Slightly Included	Very Slightly Included	Slightly Included	Included



**ADDITIONAL GRADING INFORMATION**

Polish **EXCELLENT**  
Symmetry **EXCELLENT**  
Fluorescence **NONE**  
Inscription(s) **649487211**  
Comments: IDEAL CUT ROUND BRILLIANT



**IGI**

September 16, 2024  
IGI Report No. 649487211  
**ROUND BRILLIANT**  
7.56 - 7.59 X 4.60 MM  
1.62 CARAT  
J  
VS 2  
EXCELLENT  
60.7%  
60%  
Medium To Slightly Thick (Faceted)  
Pointed  
EXCELLENT  
EXCELLENT  
NONE  
IGI 649487211  
Comments: IDEAL CUT ROUND BRILLIANT

